

News

United States
Department
of Labor



Bureau of Labor Statistics

Washington, D.C. 20212

Technical contact:

Wayne Shelly 202/606-6199

USDL: 97-247

Media contact:

Kathryn Hoyle 202/606-5902

TRANSMISSION OF MATERIAL
IN THIS RELEASE IS EMBARGOED
UNTIL 8:30 A.M. (EDT), TUESDAY,
JULY 29, 1997

Internet: <http://stats.bls.gov/ecthome.htm>

EMPLOYMENT COST INDEX – June 1997

The Employment Cost Index (ECI) for June 1997 was 132.8 (June 1989=100), an increase of 2.8 percent from June 1996, the U.S. Department of Labor's Bureau of Labor Statistics reported today. The ECI measures changes in compensation costs, which include wages, salaries, and employer costs for employee benefits.

Quarterly changes, seasonally adjusted

On a seasonally adjusted basis, compensation costs for civilian workers (private industry plus state and local government) increased 0.8 percent during the March-June 1997 period. Three-month increases in compensation costs have ranged from 0.6 to 0.9 percent for the last 4 ½ years. Wages and salaries also increased 0.8 percent during the March-June 1997 period. The increase for the December 1996-March 1997 period was 0.9 percent. Benefit costs increased 0.6 percent in the March-June 1997 period, about the same as the quarterly increases from March-December 1996. In December 1996-March 1997, these costs increased 0.1 percent.

Table A. Percent changes in Employment Cost Index for civilian workers and private industry

Compensation Component	Seasonally adjusted 3-months ended								Unadjusted 12-months ended June 1997
	Sep. 1995	Dec. 1995	Mar. 1996	June 1996	Sep. 1996	Dec. 1996	Mar. 1997	June 1997	
Civilian workers									
Compensation costs	0.6	0.6	0.6	0.9	0.6	0.8	0.6	0.8	2.8
Wages and salaries	0.7	0.6	1.0	0.8	0.7	0.8	0.9	0.8	3.2
Benefit costs	0.5	0.5	0.1	0.6	0.6	0.7	0.1	0.6	2.0
Private industry									
Compensation costs	0.6	0.7	0.6	0.9	0.7	0.7	0.6	0.8	2.9
Wages and salaries	0.7	0.7	1.0	0.9	0.7	0.8	0.9	0.9	3.3
Benefit costs	0.5	0.5	0.0	0.7	0.5	0.7	0.0	0.7	2.0

Compensation costs for private industry workers increased 0.8 percent during the March-June 1997 period. Over the past four years, quarterly compensation increases have ranged from 0.6 to 0.9 percent in private industry. Wages and salaries increased 0.9 percent in June, the same as in the March quarter. Benefit

costs increased 0.7 percent in June; in March, benefit costs were unchanged. These benefit cost changes were identical to those recorded for the March and June quarters in 1996. (See table 1.)

Compensation costs for state and local government workers increased 0.5 percent in the March-June 1997 period, the same increase as in the previous quarter. Wages and salaries, which have increased at three-month rates of 0.6 to 0.9 percent for the last 4 ½ years, rose 0.6 percent in the March-June 1997 period. Benefit costs increased 0.1 percent, down from the 0.5 percent recorded in the December-March quarter. (See table 1.)

Over-the-year changes, not seasonally adjusted

Compensation costs for civilian workers (not seasonally adjusted) increased 2.8 percent for the year ended in June 1997; such costs rose 2.9 percent during the 12-month period ended in June 1996. (See table 2.) In private industry, compensation costs increased 2.9 percent for the year ended in June 1997, the same as that recorded for the year ended in June 1996. (See table 3.) In state and local government, these costs increased 2.4 percent over the year. (See table 2.)

In private industry, wages and salaries increased 3.3 percent for the 12-month period ended in June 1997. For the year ended in June 1996, the increase was 3.4 percent. (See table 6.) Benefit costs for private industry workers increased 2.0 percent in the year ended in June 1997. For the year ended in June 1996, the increase was 1.7 percent. (See table 8 and chart A.)

Over the year ended in June 1997, compensation cost increases in private industry were 3.2 percent for white-collar workers, 2.5 percent for blue-collar workers, and 3.5 percent for service occupations. Among occupational groups, increases ranged from 1.7 percent for transportation and material moving occupations to 4.0 percent for executive, administrative, and managerial occupations. (See table 3.)

For the year ended in June 1997, compensation cost gains in private industry were 2.6 percent for goods-producing and 3.0 percent for service-producing industries. Among the specific industries, increases ranged from 0.1 percent for aircraft manufacturing (SIC 3721) to 3.9 percent for retail trade and business services. (See table 3.)

Over-the-year compensation cost increases in private industry were 3.2 percent for nonunion workers and 1.6 percent for union workers. In goods-producing industries, nonunion compensation costs increased 2.9 percent, and union compensation costs increased 1.7 percent. In the service-producing industries, nonunion compensation costs increased 3.3 percent, and union compensation costs increased 1.6 percent. (See table 4.)

Data for aircraft manufacturing (SIC 3721) that formerly appeared in table 9 now appear in the tables that cover the individual compensation components. Thus, compensation estimates appear in table 3, wages and salaries appear in table 6, and benefits appear in table 8. In each of the tables, aircraft manufacturing is listed as a subcategory of manufacturing.

The ECI for September 1997 is scheduled to be released Tuesday, October 28, 1997, at 8:30 A.M. (EST).

BLS Data Available on the World Wide Web and Fax On Demand

ECI data, as well as other data produced by BLS, are now available on the World Wide Web. The ECI home page address is: <http://stats.bls.gov/ecthome.htm>. The BLS home page address is: <http://stats.bls.gov>. To access data using GOPHER or Anonymous FTP, use the Internet address: stats.bls.gov.

For technical assistance in using the BLS Internet site, send e-mail to: labstat.helpdesk@bls.gov. For ECI data requests, send e-mail to: ocltinfo@bls.gov.

News releases and other information are available from the BLS fax-on-demand service. To request a document fax, call 202-606-6325. To request a catalog of available documents, select option 2 at the initial voice prompt. To request data found in this news release, enter the following codes:

Text	4110
Tables 1-4	4115
Tables 5-7	4120
Table 8	4125
Explanatory notes	4190

Employment Cost Index

Chart A. Changes in wages and salaries and benefit costs, private industry

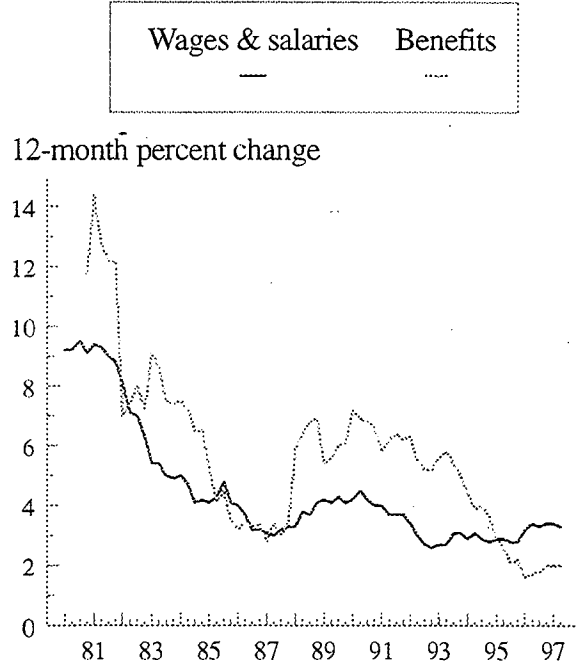


Chart B. Changes in compensation, seasonally adjusted and not seasonally adjusted, private industry

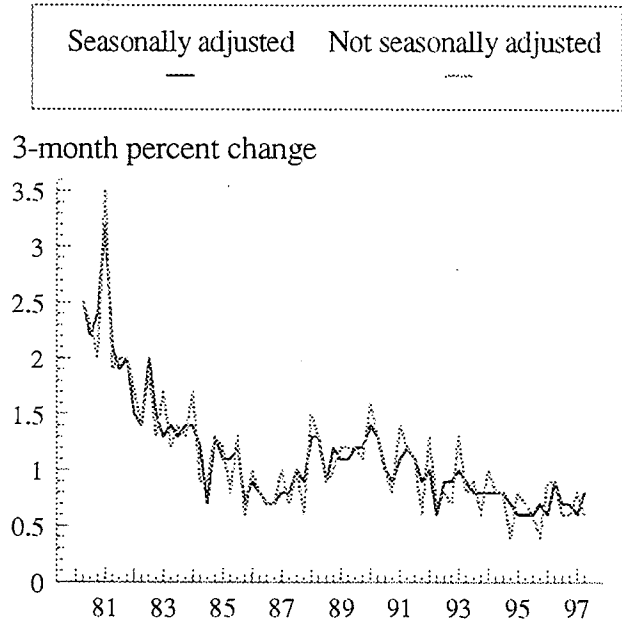


Chart C. Changes in compensation, private industry and state and local government

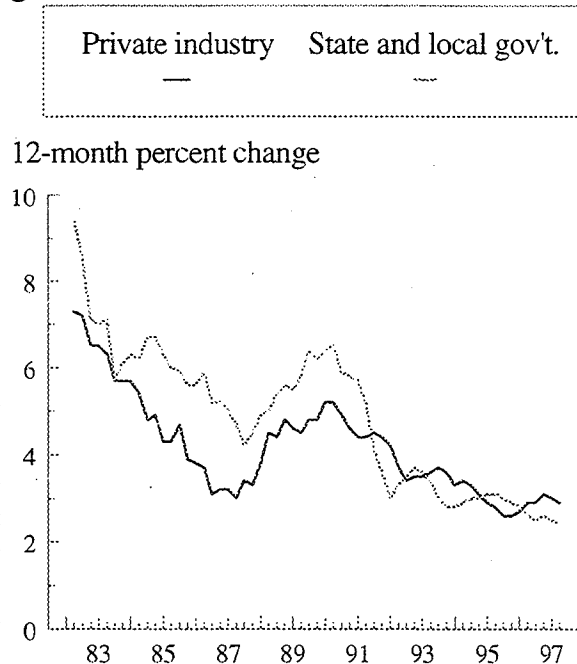


Chart D. Changes in wages and salaries, private industry and state and local government

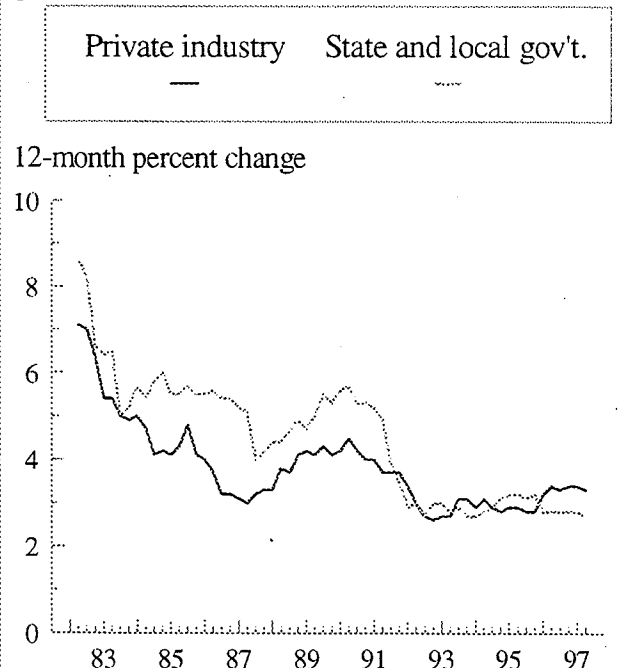


Table 1. SEASONALLY ADJUSTED: Employment Cost Index for total compensation, wages and salaries, and benefit costs, by industry and occupational group

Series	Indexes (June 1989=100)		Percent changes for 3-months ended							
	Mar. 1997	Jun. 1997	Sep. 1995	Dec. 1995	Mar. 1996	June 1996	Sep. 1996	Dec. 1996	Mar. 1997	Jun. 1997
COMPENSATION										
Civilian workers	131.8	132.8	0.6	0.6	0.6	0.9	0.6	0.8	0.6	0.8
State and local government	133.2	133.8	.6	.7	.6	.6	.6	.8	.5	.5
Private industry workers	131.4	132.5	.6	.7	.6	.9	.7	.7	.6	.8
White-collar occupations	133.0	134.0	.6	.7	.9	.8	.8	.7	.8	.8
Blue-collar occupations	129.6	130.7	.6	.6	.6	.7	.4	.9	.3	.8
Service occupations	129.5	130.6	.5	.3	.5	.7	.6	.9	.9	.8
Goods-producing industries ¹ ...	131.4	132.7	.6	.8	.4	.9	.7	.6	.2	1.0
Construction	127.4	128.5	.7	.7	.6	.5	.4	.9	.6	.9
Manufacturing	132.4	133.6	.6	.8	.5	.9	.8	.7	.2	.9
Durables	132.9	134.0	.5	.8	.3	1.2	.6	.7	.1	.8
Nondurables	131.5	132.8	.6	1.0	.7	.5	1.2	.7	.3	1.0
Service-producing industries ² ...	131.5	132.4	.6	.6	.8	.8	.7	.8	.8	.7
Transportation and public utilities	131.0	131.8	1.0	.7	.6	.7	.6	1.0	.3	.6
Wholesale trade	133.2	133.5	1.3	.8	.6	.9	.7	.8	1.7	.2
Retail trade	128.7	129.5	.7	.4	1.5	-1	1.1	1.3	.9	.6
Finance, insurance, and real estate ³	128.6	129.4	.7	.3	1.1	1.4	.3	-6	2.1	.6
Services	134.5	135.7	.5	.5	.8	.8	.7	.8	.7	.9
Nonmanufacturing industries ...	131.0	132.0	.7	.6	.7	.8	.7	.9	.7	.8
WAGES AND SALARIES										
Civilian workers	129.1	130.1	0.7	0.6	1.0	0.8	0.7	0.8	0.9	0.8
State and local government	131.4	132.2	.6	.8	.6	.8	.6	.8	.6	.6
Private industry workers	128.5	129.7	.7	.7	1.0	.9	.7	.8	.9	.9
White-collar occupations	130.2	131.2	.7	.7	1.1	.9	.8	.8	1.0	.8
Blue-collar occupations ³	126.0	127.3	.6	.5	.9	1.0	.5	.6	.7	1.0
Service occupations	126.6	127.7	.6	.4	.7	.7	.9	1.0	.9	.9
Goods-producing industries ^{1,3} ...	127.5	128.9	.6	.7	.8	1.0	.8	.6	.6	1.1
Construction	122.3	123.5	.8	.9	.9	.8	.5	.7	1.2	1.0
Manufacturing ³	129.1	130.3	.5	.6	.9	.9	.9	.5	.5	.9
Durables ³	129.0	130.1	.6	.6	.6	1.1	.9	.5	.5	.9
Nondurables	129.2	130.4	.6	1.0	.9	.5	1.1	.8	.4	.9
Service-producing industries ² ...	129.0	130.0	.8	.7	1.1	.8	.7	.9	1.0	.8
Transportation and public utilities	128.1	128.9	.8	.6	.6	.5	.7	.8	.9	.6
Wholesale trade	131.8	131.8	1.4	1.1	.9	.9	.7	.7	1.8	.0
Retail trade	127.4	128.4	.7	.2	2.1	-1	1.0	1.3	1.3	.8
Finance, insurance, and real estate ³	124.5	125.3	.9	.3	1.2	1.8	.2	.0	1.9	.6
Services	131.6	133.1	.6	.6	1.0	1.1	.7	.7	.8	1.1
Nonmanufacturing industries ...	128.2	129.2	.8	.7	1.0	.9	.6	1.0	.9	.8

See footnotes at end of table.

Table 1. SEASONALLY ADJUSTED: Employment Cost Index for total compensation, wages and salaries, and benefit costs, by industry and occupational group — Continued

Series	Indexes (June 1989=100)		Percent changes for 3-months ended							
	Mar. 1997	Jun. 1997	Sep. 1995	Dec. 1995	Mar. 1996	June 1996	Sep. 1996	Dec. 1996	Mar. 1997	Jun. 1997
	BENEFIT COSTS									
Civilian workers	138.5	139.3	0.5	0.5	0.1	0.6	0.6	0.7	0.1	0.6
State and local government	137.5	137.6	.5	.5	.7	.4	.4	.7	.5	.1
Private industry workers	138.7	139.7	.5	.5	.0	.7	.5	.7	.0	.7
White-collar occupations	140.5	141.4	.4	.5	.1	.7	.8	.5	.3	.6
Blue-collar occupations	137.0	137.9	.5	.6	.0	.7	.2	.7	-.1	.7
Service occupations	138.4	139.5	.2	.1	-.1	.3	.1	.6	.9	.8
Goods-producing industries ¹ ...	139.4	140.7	.4	1.0	-.2	.8	.4	.9	-.6	.9
Manufacturing	139.4	140.8	.5	1.1	-.1	.9	.6	.8	-.6	1.0
Service-producing industries ² ...	138.3	139.1	.4	.4	.1	.6	.7	.6	.4	.6
Nonmanufacturing industries	138.8	139.4	.5	.3	.1	.5	.5	.7	.4	.4

¹ Includes mining, construction, and manufacturing.

² Includes transportation, communication, and public utilities; wholesale and retail

trade; finance, insurance, and real estate; and service industries.

³ No identifiable seasonality was found for this series.

Table 2. COMPENSATION (NOT SEASONALLY ADJUSTED): Employment Cost Index for total compensation, civilian and state and local government workers, by industry and occupational group

Series	Indexes (June 1989=100)			Percent changes for					
	Jun. 1996	Mar. 1997	Jun. 1997	3 months ended			12 months ended		
				Jun. 1996	Mar. 1997	Jun. 1997	Jun. 1996	Mar. 1997	Jun. 1997
Civilian workers	129.2	132.0	132.8	0.7	0.8	0.6	2.9	2.9	2.8
Excluding sales	129.4	132.1	133.0	.6	.7	.7	2.8	2.7	2.8
Workers, by occupational group									
White-collar occupations	130.0	133.1	133.9	.7	.9	.6	2.9	3.1	3.0
Excluding sales	130.5	133.5	134.3	.6	.8	.6	2.8	2.9	2.9
Professional specialty and technical ...	131.4	133.7	134.6	.6	.5	.7	3.1	2.4	2.4
Executive, administrative, and managerial	129.1	133.2	134.0	.5	1.3	.6	2.7	3.7	3.8
Administrative support, including clerical	130.8	133.6	134.6	.5	.8	.7	2.7	2.7	2.9
Blue-collar occupations	127.7	129.8	130.9	.8	.5	.8	2.6	2.4	2.5
Service occupations	128.7	132.0	132.7	.5	.8	.5	2.3	3.1	3.1
Workers, by industry division									
Goods-producing ¹	129.3	131.5	132.7	.8	.5	.9	2.6	2.5	2.6
Manufacturing	130.4	132.6	133.8	.9	.4	.9	2.8	2.6	2.6
Service-producing ²	129.1	132.1	132.9	.7	.9	.6	2.9	3.0	2.9
Services	131.2	134.1	134.9	.6	.7	.6	2.7	2.8	2.8
Health services	133.4	135.2	135.7	.7	.6	.4	2.5	2.0	1.7
Hospitals	132.9	134.2	134.6	.5	.3	.3	2.5	1.4	1.3
Educational services	130.8	134.0	134.2	.2	.1	.1	2.7	2.7	2.6
Public administration	129.6	133.0	133.0	.3	.9	.0	2.8	2.9	2.6
Nonmanufacturing	128.8	131.7	132.5	.7	.9	.6	2.9	3.0	2.9
State and local government workers	130.2	133.2	133.3	.2	.4	.1	2.6	2.5	2.4
Workers, by occupational group									
White-collar occupations	129.9	132.9	133.0	.2	.3	.1	2.6	2.5	2.4
Professional specialty and technical ...	129.5	132.5	132.5	.3	.2	.0	2.5	2.6	2.3
Executive, administrative, and managerial	131.0	134.1	134.4	.2	.9	.2	2.8	2.6	2.6
Administrative support, including clerical	130.4	133.3	133.5	.3	.2	.2	2.8	2.5	2.4
Blue-collar occupations	129.5	132.1	132.3	.4	.7	.2	2.5	2.4	2.2
Service occupations	132.3	135.6	135.6	.3	.8	.0	2.7	2.8	2.5
Workers, by industry division									
Services	130.3	133.2	133.3	.2	.1	.1	2.5	2.5	2.3
Excluding schools ³	130.8	132.5	132.9	.4	.4	.3	2.4	1.7	1.6
Health services	133.1	134.5	134.9	.5	.3	.3	2.5	1.5	1.4
Hospitals	133.2	134.8	135.2	.5	.4	.3	2.5	1.7	1.5
Educational services	130.0	133.1	133.2	.2	.1	.1	2.5	2.6	2.5
Schools	130.3	133.4	133.5	.2	.0	.1	2.5	2.6	2.5
Elementary and secondary	130.5	133.1	133.3	.2	.0	.2	2.4	2.2	2.1
Colleges and universities	129.9	134.3	134.1	.4	.2	-.1	3.0	3.8	3.2
Public administration	129.6	133.0	133.0	.3	.9	.0	2.8	2.9	2.6

¹ Includes mining, construction, and manufacturing.

² Includes transportation, communication, and public utilities; wholesale and retail

trade; finance, insurance, and real estate; service industries; and public administration.

³ Formerly called hospitals and other services.

Table 3. COMPENSATION (NOT SEASONALLY ADJUSTED): Employment Cost Index for total compensation, private industry workers, by industry and occupational group

Series	Indexes (June 1989=100)			Percent changes for					
	Jun. 1996	Mar. 1997	Jun. 1997	3 months ended			12 months ended		
				Jun. 1996	Mar. 1997	Jun. 1997	Jun. 1996	Mar. 1997	Jun. 1997
Private industry workers	129.0	131.7	132.8	0.9	0.8	0.8	2.9	3.0	2.9
Excluding sales	129.2	131.9	133.0	.7	.8	.8	2.8	2.8	2.9
White-collar occupations	130.0	133.1	134.1	.8	1.1	.8	3.0	3.2	3.2
Excluding sales	130.7	133.7	134.8	.6	.9	.8	2.9	2.9	3.1
Professional specialty and technical	132.6	134.6	135.9	.8	.7	1.0	3.3	2.3	2.5
Executive, administrative, and managerial	128.8	133.0	133.9	.6	1.3	.7	2.7	3.9	4.0
Sales	126.9	130.1	130.7	1.7	1.6	.5	3.7	4.2	3.0
Administrative support, including clerical	130.8	133.7	-134.7	.5	.9	.7	2.7	2.8	3.0
Blue-collar occupations	127.6	129.6	130.8	.8	.5	.9	2.6	2.4	2.5
Precision production, craft, and repair	127.7	129.6	130.9	.9	.4	1.0	2.7	2.5	2.5
Machine operators, assemblers, and inspectors	128.1	130.0	131.2	.8	.4	.9	2.6	2.3	2.4
Transportation and material moving	124.7	126.1	126.8	.6	.7	.6	1.9	1.8	1.7
Handlers, equipment cleaners, helpers, and laborers	129.3	132.8	133.4	.6	1.1	.5	3.2	3.3	3.2
Service occupations	126.5	129.8	130.9	.6	.7	.8	2.0	3.2	3.5
Production and nonsupervisory occupations ¹	128.6	131.1	132.1	.9	.8	.8	2.9	2.8	2.7
Goods-producing industries ²	129.3	131.4	132.7	.9	.4	1.0	2.7	2.5	2.6
Excluding sales occupations	129.0	131.1	132.3	.8	.5	.9	2.7	2.4	2.6
White-collar occupations	131.0	133.5	134.8	.8	.5	1.0	2.7	2.7	2.9
Excluding sales	130.2	132.6	133.8	.6	.4	.9	2.8	2.5	2.8
Blue-collar occupations	128.3	130.2	131.4	.9	.5	.9	2.7	2.4	2.4
Construction	125.3	127.2	128.7	.8	.6	1.2	2.7	2.3	2.7
Manufacturing	130.4	132.6	133.8	.9	.4	.9	2.8	2.6	2.6
White-collar occupations	131.6	133.9	135.2	.8	.2	1.0	2.8	2.6	2.7
Excluding sales	130.5	132.8	133.8	.8	.2	.8	3.1	2.5	2.5
Blue-collar occupations	129.5	131.7	132.8	.9	.5	.8	2.8	2.6	2.5
Durables	131.2	133.0	134.1	1.2	.3	.8	2.7	2.5	2.2
Aircraft manufacturing (SIC 3721)	138.2	137.3	138.4	.9	-.1	.8	5.5	.3	.1
White-collar occupations	133.9	133.5	134.9	1.1	-.1	1.0	5.3	.8	.7
Blue-collar occupations	144.1	142.3	142.8	.6	.0	.4	5.9	-.7	-.9
Nondurables	128.9	131.7	133.0	.5	.5	1.0	2.8	2.7	3.2
Service-producing industries ³	128.6	131.6	132.5	.8	1.1	.7	3.0	3.1	3.0
Excluding sales occupations	129.2	132.2	133.3	.6	1.0	.8	2.7	3.0	3.2
White-collar occupations	129.6	132.7	133.7	.9	1.2	.8	3.2	3.3	3.2
Excluding sales	130.9	134.0	135.1	.7	1.1	.8	3.0	3.1	3.2
Blue-collar occupations	126.0	128.2	129.2	.6	.7	.8	2.4	2.4	2.5
Service occupations	126.1	129.5	130.6	.6	.7	.8	2.0	3.4	3.6
Transportation and public utilities	128.4	131.3	131.7	.4	.7	.3	3.0	2.7	2.6
Transportation	127.7	130.6	130.9	.6	1.1	.2	3.8	2.9	2.5

See footnotes at end of table.

Table 3. COMPENSATION (NOT SEASONALLY ADJUSTED): Employment Cost Index for total compensation, private industry workers, by industry and occupational group — Continued

Series	Indexes (June 1989=100)			Percent changes for					
	Jun. 1996	Mar. 1997	Jun. 1997	3 months ended			12 months ended		
				Jun. 1996	Mar. 1997	Jun. 1997	Jun. 1996	Mar. 1997	Jun. 1997
Public utilities	129.1	132.0	132.5	0.2	0.2	0.4	1.8	2.4	2.6
Communications	127.5	130.2	130.5	-.4	-.7	.2	.7	1.7	2.4
Electric, gas, and sanitary services	131.1	134.2	134.9	.8	1.4	.5	3.2	3.2	2.9
Wholesale and retail trade	126.4	130.1	131.2	.7	1.2	.8	2.9	3.7	3.8
Excluding sales occupations	126.4	130.4	131.9	.4	1.1	1.2	2.7	3.6	4.4
Wholesale trade	129.3	132.9	133.8	1.4	1.5	.7	3.6	4.2	3.5
Excluding sales occupations	128.7	132.6	133.7	1.0	1.3	.8	2.9	4.1	3.9
Retail trade	124.8	128.5	129.7	.2	.9	.9	2.5	3.2	3.9
General merchandise stores	123.6	126.4	127.7	1.0	.1	1.0	2.4	3.3	3.3
Food stores	124.4	128.2	128.2	.6	-.2	.0	3.1	3.7	3.1
Finance, insurance, and real estate	126.3	128.6	129.4	1.4	2.1	.6	3.7	3.3	2.5
Excluding sales occupations	128.5	131.5	132.4	.8	1.8	.7	3.1	3.1	3.0
Banking, savings and loan, and other credit agencies	128.2	130.6	131.6	1.0	2.0	.8	3.3	2.9	2.7
Insurance	128.2	131.9	132.1	.5	1.8	.2	2.9	3.4	3.0
Excluding sales occupations	132.7	136.0	136.6	.5	1.9	.4	2.9	3.0	2.9
Services	131.7	134.6	135.7	.8	.9	.8	2.7	3.0	3.0
Business services	129.2	133.3	134.2	.2	1.1	.7	3.1	3.4	3.9
Health services	133.5	135.5	135.9	.7	.7	.3	2.5	2.2	1.8
Hospitals	132.8	134.0	134.4	.5	.2	.3	2.4	1.4	1.2
Nursing homes	-	-	-	1.0	.7	.5	3.1	2.8	2.3
Educational services	134.8	138.5	138.8	.3	.4	.2	3.5	3.1	3.0
Colleges and universities	136.2	139.5	139.9	.2	.3	.3	3.7	2.6	2.7
Nonmanufacturing industries	128.2	131.1	132.1	.8	1.0	.8	2.9	3.1	3.0
White-collar occupations	129.5	132.7	133.6	.8	1.2	.7	3.1	3.3	3.2
Excluding sales	130.8	134.0	135.1	.6	1.1	.8	2.9	3.1	3.3
Blue-collar occupations	125.6	127.5	128.6	.8	.6	.9	2.5	2.3	2.4
Service occupations	126.0	129.4	130.5	.6	.6	.9	2.0	3.3	3.6

¹ This series has the same industry and occupational coverage as the Hourly Earnings Index, which was discontinued in January 1989.

² Includes mining, construction, and manufacturing.

³ Includes transportation, communication, and public utilities; wholesale and retail trade; finance, insurance, and real estate; and service industries.

- Data not available.

Table 4. COMPENSATION (NOT SEASONALLY ADJUSTED): Employment Cost Index for total compensation, private industry workers, by bargaining status and area size

Series	Indexes (June 1989=100)			Percent changes for					
	Jun. 1996	Mar. 1997	Jun. 1997	3 months ended			12 months ended		
				Jun. 1996	Mar. 1997	Jun. 1997	Jun. 1996	Mar. 1997	Jun. 1997
Workers, by bargaining status:									
Union	129.7	131.0	131.8	0.9	0.2	0.6	3.1	1.9	1.6
Blue-collar occupations	128.0	128.9	129.9	.9	.0	.8	2.6	1.7	1.5
Goods-producing industries ¹	129.0	130.0	131.2	.9	.2	.9	2.5	1.6	1.7
Service-producing industries ²	130.3	131.9	132.4	1.0	.2	.4	3.7	2.2	1.6
Manufacturing	129.8	130.8	131.7	.8	.2	.7	2.5	1.6	1.5
Blue-collar occupations	129.4	130.5	131.4	.9	.3	.7	2.4	1.7	1.5
Nonmanufacturing	129.2	130.6	131.5	.9	.2	.7	3.4	2.0	1.8
Nonunion	128.7	131.8	132.8	.8	1.1	.8	2.8	3.2	3.2
Blue-collar occupations	127.3	129.9	131.2	.8	.8	1.0	2.7	2.9	3.1
Goods-producing industries ¹	129.4	132.0	133.2	.9	.5	.9	2.8	2.9	2.9
Service-producing industries ²	128.3	131.5	132.5	.8	1.2	.8	2.8	3.3	3.3
Manufacturing	130.5	133.1	134.4	.9	.5	1.0	2.8	2.9	3.0
Blue-collar occupations	129.3	132.2	133.5	.9	.6	1.0	3.0	3.2	3.2
Nonmanufacturing	128.0	131.1	132.2	.8	1.2	.8	2.8	3.2	3.3
Workers, by region:³									
Northeast	129.7	132.2	133.1	.6	.8	.7	2.4	2.6	2.6
South	127.8	130.8	131.5	.6	.8	.5	2.8	3.0	2.9
Midwest	130.7	133.3	134.7	.9	.9	1.1	3.0	2.9	3.1
West	127.3	130.3	131.4	1.1	1.1	.8	3.2	3.5	3.2
Workers, by area size:									
Metropolitan areas	129.1	131.7	132.8	.9	.8	.8	3.0	2.9	2.9
Other areas	128.0	131.4	132.4	.6	.9	.8	2.2	3.3	3.4

¹ Includes mining, construction, and manufacturing.

² Includes transportation, communication, and public utilities; wholesale and retail trade; finance, insurance, and real estate; and service industries.

³ The regional coverage is as follows: Northeast—Connecticut, Maine, Massachusetts, New Hampshire, New Jersey, New York, Pennsylvania, Rhode Island, and Vermont; South—Alabama, Arkansas, Delaware, District of Columbia, Florida, Georgia, Kentucky, Louisiana, Maryland, Mississippi, North Carolina, Oklahoma, South

Carolina, Tennessee, Texas, Virginia, and West Virginia; Midwest—Illinois, Indiana, Iowa, Kansas, Michigan, Minnesota, Missouri, Nebraska, North Dakota, Ohio, South Dakota, and Wisconsin; and West—Alaska, Arizona, California, Colorado, Hawaii, Idaho, Montana, Nevada, New Mexico, Oregon, Utah, Washington, and Wyoming.

NOTE: The indexes for these series are not strictly comparable to those for the aggregate, occupation, and industry series.

Table 5. WAGES AND SALARIES (NOT SEASONALLY ADJUSTED): Employment Cost Index for wages and salaries only, civilian and state and local government workers, by industry and occupational group

Series	Indexes (June 1989=100)			Percent changes for					
	Jun. 1996	Mar. 1997	Jun. 1997	3 months ended			12 months ended		
				Jun. 1996	Mar. 1997	Jun. 1997	Jun. 1996	Mar. 1997	Jun. 1997
Civilian workers	126.1	129.2	130.1	.8	.9	.7	3.2	3.3	3.2
Excluding sales	126.2	129.2	130.2	.7	.9	.8	3.1	3.1	3.2
Workers, by occupational group									
White-collar occupations	127.3	130.6	131.5	.8	1.0	.7	3.4	3.4	3.3
Excluding sales	127.8	131.0	132.0	.6	.8	.8	3.2	3.1	3.3
Professional specialty and technical ...	128.8	131.4	132.3	.6	.5	.7	3.3	2.7	2.7
Executive, administrative, and managerial	127.0	131.0	132.0	.6	1.2	.8	3.4	3.8	3.9
Administrative support, including clerical	127.1	130.4	131.4	.6	1.0	.8	3.0	3.2	3.4
Blue-collar occupations	123.9	126.2	127.5	.9	.6	1.0	3.0	2.8	2.9
Service occupations	124.9	128.6	129.3	.6	.8	.5	2.5	3.5	3.5
Workers, by industry division									
Goods-producing ¹	125.1	127.6	128.9	1.0	.6	1.0	3.0	3.0	3.0
Manufacturing	126.5	129.1	130.3	.9	.5	.9	2.9	3.0	3.0
Service-producing ²	126.5	129.8	130.6	.7	1.0	.6	3.3	3.3	3.2
Services	128.9	132.0	132.9	.7	.7	.7	3.3	3.1	3.1
Health services	130.0	132.4	133.1	.5	.8	.5	2.7	2.4	2.4
Hospitals	129.2	131.0	131.5	.5	.4	.4	2.5	1.9	1.8
Educational services	129.1	132.5	132.6	.2	.2	.1	3.2	2.9	2.7
Public administration	125.3	128.9	129.0	.3	.9	.1	2.5	3.2	3.0
Nonmanufacturing	125.9	129.1	130.0	.7	1.0	.7	3.3	3.3	3.3
State and local government workers	128.1	131.4	131.5	.2	.4	.1	2.8	2.8	2.7
Workers, by occupational group									
White-collar occupations	128.2	131.4	131.5	.2	.2	.1	2.9	2.7	2.6
Professional specialty and technical ...	128.6	131.9	132.0	.2	.2	.1	2.9	2.8	2.6
Executive, administrative, and managerial	128.0	131.3	131.7	.2	.8	.3	3.0	2.8	2.9
Administrative support, including clerical	126.1	129.2	129.5	.2	.2	.2	2.6	2.7	2.7
Blue-collar occupations	127.0	129.6	129.8	.3	.6	.2	2.6	2.4	2.2
Service occupations	128.6	132.4	132.4	.4	1.1	.0	2.7	3.4	3.0
Workers, by industry division									
Services	128.9	132.1	132.2	.2	.2	.1	3.0	2.7	2.6
Excluding schools ³	128.7	131.2	131.6	.4	.5	.3	2.5	2.3	2.3
Health services	129.9	132.1	132.6	.5	.5	.4	2.6	2.2	2.1
Hospitals	129.7	131.9	132.4	.5	.5	.4	2.7	2.2	2.1
Educational services	128.8	132.1	132.2	.2	.1	.1	3.1	2.8	2.6
Schools	128.9	132.2	132.3	.2	.0	.1	3.0	2.7	2.6
Elementary and secondary	129.5	132.4	132.6	.2	.0	.2	2.9	2.4	2.4
Colleges and universities	127.1	131.5	131.4	.2	.2	-.1	3.4	3.7	3.4
Public administration	125.3	128.9	129.0	.3	.9	.1	2.5	3.2	3.0

¹ Includes mining, construction, and manufacturing.

² Includes transportation, communication, and public utilities; wholesale and retail

trade; finance, insurance, and real estate; service industries; and public administration.

³ Formerly called hospitals and other services.

Table 6. WAGES AND SALARIES (NOT SEASONALLY ADJUSTED): Employment Cost Index for wages and salaries only, private industry workers, by industry and occupational group

Series	Indexes (June 1989=100)			Percent changes for					
	Jun. 1996	Mar. 1997	Jun. 1997	3 months ended			12 months ended		
				Jun. 1996	Mar. 1997	Jun. 1997	Jun. 1996	Mar. 1997	Jun. 1997
Private industry workers	125.6	128.6	129.7	1.0	1.0	0.9	3.4	3.4	3.3
Excluding sales	125.7	128.6	129.9	.8	.9	1.0	3.2	3.1	3.3
White-collar occupations	127.0	130.2	131.3	1.0	1.2	.8	3.5	3.5	3.4
Excluding sales	127.6	130.8	132.0	.7	1.1	.9	3.4	3.2	3.4
Professional specialty and technical	128.8	131.0	132.4	.8	.8	1.1	3.5	2.5	2.8
Executive, administrative, and managerial	126.8	131.0	132.1	.7	1.3	.8	3.5	4.1	4.2
Sales	124.4	127.8	128.3	2.0	1.5	.4	4.3	4.8	3.1
Administrative support, including clerical	127.3	130.6	131.7	.6	1.1	.8	3.1	3.2	3.5
Blue-collar occupations	123.7	126.0	127.3	1.0	.7	1.0	3.0	2.9	2.9
Precision production, craft, and repair	123.7	125.8	127.4	1.1	.6	1.3	3.2	2.8	3.0
Machine operators, assemblers, and inspectors	124.5	127.2	128.5	.9	.6	1.0	3.0	3.1	3.2
Transportation and material moving	120.6	122.3	123.0	.5	1.0	.6	2.4	1.9	2.0
Handlers, equipment cleaners, helpers, and laborers	125.1	128.4	129.3	.7	1.0	.7	3.2	3.4	3.4
Service occupations	123.0	126.6	127.6	.7	.7	.8	2.5	3.6	3.7
Production and nonsupervisory occupations ¹	124.9	127.7	128.8	1.0	.9	.9	3.2	3.2	3.1
Goods-producing industries ²	125.1	127.5	128.9	1.0	.6	1.1	3.0	2.9	3.0
Excluding sales occupations	124.6	127.0	128.3	.9	.6	1.0	3.1	2.8	3.0
White-collar occupations	127.3	130.0	131.4	.9	.7	1.1	2.8	3.0	3.2
Excluding sales	126.3	128.9	130.0	.8	.6	.9	3.1	2.9	2.9
Blue-collar occupations	123.7	126.0	127.3	1.1	.6	1.0	3.2	2.9	2.9
Construction	119.6	122.0	123.6	1.1	1.0	1.3	3.4	3.1	3.3
Manufacturing	126.5	129.1	130.3	.9	.5	.9	2.9	3.0	3.0
White-collar occupations	128.2	130.6	131.9	.9	.4	1.0	2.8	2.8	2.9
Excluding sales	127.0	129.3	130.5	.8	.3	.9	3.1	2.6	2.8
Blue-collar occupations	125.4	128.0	129.2	1.0	.5	.9	3.1	3.1	3.0
Durables	126.5	129.0	130.1	1.1	.5	.9	2.9	3.1	2.8
Aircraft manufacturing (SIC 3721)	130.3	132.0	133.5	1.0	.8	1.1	3.0	2.3	2.5
White-collar occupations	125.9	127.8	129.6	1.5	1.0	1.4	3.5	3.0	2.9
Blue-collar occupations	136.4	137.7	138.8	.2	.4	.8	2.1	1.2	1.8
Nondurables	126.5	129.3	130.6	.6	.6	1.0	2.9	2.8	3.2
Service-producing industries ³	125.8	129.0	130.1	.9	1.2	.9	3.5	3.4	3.4
Excluding sales occupations	126.5	129.7	130.9	.7	1.1	.9	3.3	3.3	3.5
White-collar occupations	126.8	130.1	131.2	1.0	1.2	.8	3.7	3.6	3.5
Excluding sales	128.1	131.5	132.7	.7	1.2	.9	3.5	3.4	3.6
Blue-collar occupations	123.5	126.0	127.2	.7	1.0	1.0	2.7	2.7	3.0
Service occupations	122.8	126.5	127.5	.7	.7	.8	2.5	3.7	3.8
Transportation and public utilities	125.0	128.2	128.8	.3	.9	.5	2.5	2.9	3.0
Transportation	123.2	126.5	126.9	.2	1.4	.3	2.8	2.9	3.0

See footnotes at end of table.

Table 6. WAGES AND SALARIES (NOT SEASONALLY ADJUSTED): Employment Cost Index for wages and salaries only, private industry workers, by industry and occupational group — Continued

Series	Indexes (June 1989=100)			Percent changes for					
	Jun. 1996	Mar. 1997	Jun. 1997	3 months ended			12 months ended		
				Jun. 1996	Mar. 1997	Jun. 1997	Jun. 1996	Mar. 1997	Jun. 1997
Public utilities	127.1	130.1	130.9	0.5	0.2	0.6	2.1	2.8	3.0
Communications	126.5	129.8	130.6	.3	-.4	.6	1.5	2.9	3.2
Electric, gas, and sanitary services	127.7	130.4	131.2	.6	1.1	.6	2.7	2.7	2.7
Wholesale and retail trade	124.8	128.5	129.7	.7	1.2	.9	3.5	3.7	3.9
Excluding sales occupations	124.9	129.3	131.1	.4	1.3	1.4	3.3	3.9	5.0
Wholesale trade	128.0	131.4	132.2	1.5	1.4	.6	4.3	4.2	3.3
Excluding sales occupations	127.6	131.8	132.8	1.0	1.5	.8	3.8	4.4	4.1
Retail trade	123.1	127.1	128.5	.2	1.0	1.1	2.9	3.5	4.4
General merchandise stores	121.7	125.0	126.2	.6	.2	1.0	2.6	3.3	3.7
Food stores	121.2	124.8	124.7	.6	.1	-.1	3.1	3.6	2.9
Finance, insurance, and real estate	121.9	124.5	125.3	1.8	1.9	.6	4.2	3.9	2.8
Excluding sales occupations	124.5	127.2	128.1	.9	1.5	.7	3.6	3.1	2.9
Banking, savings and loan, and other credit agencies	124.2	125.9	126.8	1.2	1.7	.7	3.8	2.6	2.1
Insurance	124.1	127.9	128.0	.4	1.5	.1	2.7	3.5	3.1
Excluding sales occupations	128.6	131.6	132.2	.5	1.5	.5	2.7	2.8	2.8
Services	128.7	131.8	133.0	.9	1.0	.9	3.5	3.3	3.3
Business services	127.7	131.4	132.4	.6	1.0	.8	3.9	3.5	3.7
Health services	130.1	132.5	133.2	.6	.8	.5	2.7	2.5	2.4
Hospitals	129.1	130.7	131.2	.5	.3	.4	2.5	1.7	1.6
Nursing homes	-	-	-	.6	1.1	.4	2.8	3.1	3.0
Educational services	130.4	134.5	134.8	.2	.5	.2	3.6	3.4	3.4
Colleges and universities	130.9	134.6	135.0	.2	.6	.3	4.0	3.1	3.1
Nonmanufacturing industries	125.1	128.2	129.3	1.0	1.1	.9	3.5	3.5	3.4
White-collar occupations	126.6	129.9	131.0	1.0	1.2	.8	3.7	3.6	3.5
Excluding sales	127.8	131.2	132.4	.7	1.2	.9	3.5	3.4	3.6
Blue-collar occupations	122.0	124.1	125.5	.9	.8	1.1	3.0	2.6	2.9
Service occupations	122.7	126.4	127.4	.6	.7	.8	2.4	3.6	3.8

¹ This series has the same industry and occupational coverage as the Hourly Earnings Index, which was discontinued in January 1989.

² Includes mining, construction, and manufacturing.

³ Includes transportation, communication, and public utilities; wholesale and retail trade; finance, insurance, and real estate; and service industries.

- Data not available.

Table 7. WAGES AND SALARIES (NOT SEASONALLY ADJUSTED): Employment Cost Index for wages and salaries only, private industry workers, by bargaining status and area size

Series	Indexes (June 1989=100)			Percent changes for					
	Jun. 1996	Mar. 1997	Jun. 1997	3 months ended			12 months ended		
				Jun. 1996	Mar. 1997	Jun. 1997	Jun. 1996	Mar. 1997	Jun. 1997
Workers, by bargaining status:									
Union	124.2	126.0	126.9	1.1	0.5	0.7	3.0	2.6	2.2
Blue-collar occupations	122.0	123.6	124.7	.9	.2	.9	2.4	2.2	2.2
Goods-producing industries ¹	122.5	124.1	125.4	1.0	.4	1.0	2.7	2.3	2.4
Service-producing industries ²	126.2	128.2	128.8	1.1	.5	.5	3.2	2.7	2.1
Manufacturing	123.9	125.6	126.5	.8	.3	.7	2.8	2.2	2.1
Blue-collar occupations	123.5	125.4	126.2	.9	.3	.6	2.7	2.5	2.2
Nonmanufacturing	124.3	126.1	127.1	1.2	.5	.8	3.1	2.7	2.3
Nonunion	125.9	129.1	130.3	.9	1.1	.9	3.4	3.4	3.5
Blue-collar occupations	124.7	127.5	128.9	.9	1.0	1.1	3.3	3.2	3.4
Goods-producing industries ¹	126.1	128.9	130.2	1.0	.7	1.0	3.2	3.2	3.3
Service-producing industries ²	125.7	129.1	130.2	.9	1.3	.9	3.5	3.6	3.6
Manufacturing	127.5	130.3	131.7	1.0	.5	1.1	3.0	3.2	3.3
Blue-collar occupations	126.7	129.8	131.2	1.0	.8	1.1	3.3	3.5	3.6
Nonmanufacturing	125.2	128.5	129.7	.8	1.2	.9	3.5	3.5	3.6
Workers, by region:³									
Northeast	126.0	128.8	129.8	.9	.9	.8	3.2	3.1	3.0
South	125.1	128.5	129.4	.8	1.2	.7	3.6	3.5	3.4
Midwest	126.2	129.0	130.4	.9	1.0	1.1	3.3	3.1	3.3
West	124.8	127.7	128.9	1.2	.9	.9	3.2	3.6	3.3
Workers, by area size:									
Metropolitan areas	125.8	128.7	129.9	1.0	1.0	.9	3.5	3.3	3.3
Other areas	124.2	127.7	128.8	.6	.9	.9	2.4	3.5	3.7

¹ Includes mining, construction, and manufacturing.

² Includes transportation, communication, and public utilities; wholesale and retail trade; finance, insurance, and real estate; and service industries.

³ The regional coverage is as follows: Northeast—Connecticut, Maine, Massachusetts, New Hampshire, New Jersey, New York, Pennsylvania, Rhode Island, and Vermont; South—Alabama, Arkansas, Delaware, District of Columbia, Florida, Georgia, Kentucky, Louisiana, Maryland, Mississippi, North Carolina, Oklahoma, South

Carolina, Tennessee, Texas, Virginia, and West Virginia; Midwest—Illinois, Indiana, Iowa, Kansas, Michigan, Minnesota, Missouri, Nebraska, North Dakota, Ohio, South Dakota, and Wisconsin; and West—Alaska, Arizona, California, Colorado, Hawaii, Idaho, Montana, Nevada, New Mexico, Oregon, Utah, Washington, and Wyoming.

NOTE: The indexes for these series are not strictly comparable to those for the aggregate, occupation, and industry series.

Table 8. BENEFITS (NOT SEASONALLY ADJUSTED): Employment Cost Index for benefits only, civilian, state and local and private industry workers, by industry and occupational group

Series	Indexes (June 1989=100)			Percent changes for					
	Jun. 1996	Mar. 1997	Jun. 1997	3 months ended			12 months ended		
				Jun. 1996	Mar. 1997	Jun. 1997	Jun. 1996	Mar. 1997	Jun. 1997
Civilian workers	136.9	138.9	139.6	0.5	0.5	0.5	1.8	2.0	2.0
State and local government workers	135.1	137.4	137.4	.3	.4	.0	2.2	2.0	1.7
Private industry workers	137.4	139.4	140.1	.6	.6	.5	1.7	2.0	2.0
White-collar occupations	138.4	140.8	141.5	.5	.8	.5	1.8	2.3	2.2
Blue-collar occupations	136.1	137.2	138.0	.7	.1	.6	1.9	1.5	1.4
Service occupations	136.3	138.3	139.6	.4	.7	.9	.5	1.9	2.4
Goods-producing industries ¹	138.6	139.9	140.9	.7	.1	.7	2.0	1.6	1.7
Service-producing industries ²	136.2	138.5	139.2	.5	.8	.5	1.6	2.2	2.2
Manufacturing	138.5	139.9	141.0	.7	.1	.8	2.4	1.7	1.8
Aircraft manufacturing (SIC 3721)	155.4	148.6	148.8	.8	-2.0	.1	10.4	-3.6	-4.2
White-collar occupations	152.9	146.8	147.3	.6	-2.7	.3	9.1	-3.4	-3.7
Blue-collar occupations	158.4	150.9	150.4	1.1	-9	-3	12.4	-3.7	-5.1
Nonmanufacturing	136.7	138.9	139.5	.5	.7	.4	1.5	2.1	2.0
Union workers	140.0	140.2	140.9	.6	-.4	.5	3.3	.8	.6
Nonunion workers	136.5	138.9	139.7	.5	.8	.6	1.3	2.3	2.3

¹ Includes mining, construction, and manufacturing.

² Includes transportation, communication, and public utilities; wholesale and retail trade; finance, insurance, and real estate; and service industries.

NOTE: The indexes for these series are not strictly comparable to those for the aggregate, occupation, and industry series.

EXPLANATORY NOTE

The Employment Cost Index (ECI) is a measure of the change in the cost of labor, free from the influence of employment shifts among occupations and industries. The compensation series includes changes in wages and salaries and employer costs for employee benefits. The wage and salary series and the benefit cost series provide the change for the two components of compensation.

Wages and salaries are defined as the hourly straight-time wage rate or, for workers not paid on an hourly basis, straight-time earnings divided by the corresponding hours. Straight-time wage and salary rates are total earnings before payroll deductions, excluding premium pay for overtime and for work on weekends and holidays, shift differentials, and nonproduction bonuses such as lump-sum payments provided in lieu of wage increases. Production bonuses, incentive earnings, commission payments, and cost-of-living adjustments are included in straight-time wage and salary rates.

Benefits covered by the ECI are: Paid leave (vacations, holidays, sick leave, and other leave); supplemental pay (premium pay for overtime, shift differentials, and nonproduction bonuses such as lump-sum payments provided in lieu of wage increases); insurance benefits (life, health, sickness and accident, and long-term disability); retirement and savings benefits (defined benefit and defined contribution); legally required benefits (social security, Federal and State unemployment insurance, workers' compensation, and other legally required benefits such as State temporary disability); and other benefits (severance pay and supplemental unemployment plans).

The ECI provides data for the civilian economy, which includes the total private economy and the public sector--excluding farms, households, and the Federal government. The private industry series and the State and local government series provide data for the two sectors separately.

Data for this quarter were collected from a probability sample of approximately 17,800 occupations within about 4,200 sample establishments in private industry and approximately 4,500 occupations within about 850 sample establishments in State and local governments. Data are collected for the pay period including the 12th day of the survey months of March, June, September, and December.

The sample establishments are classified in industry categories based on the 1987 Standard Industrial Classification (SIC), as defined by the U.S. Office of Management and Budget.

Within an establishment, specific job categories are selected to represent broader occupational definitions. From June 1986 through December 1994, the jobs were classified according to definitions used in the 1980 Census. Prior to June 1986, they were classified according to the 1970 Census. Differences between the two classification systems are slight, as indicated in the article "Introducing new weights for the Employment Cost Index," in the June 1985 issue of the Monthly Labor Review. Beginning with March 1995, the jobs are classified according to the 1990 Census, which differs little from the 1980 Census.

Fixed employment weights are used each quarter to calculate the most aggregate indexes--civilian, private, and State and local governments. These fixed weights are also used to derive all of the industry and occupation series indexes. Beginning in March 1995, 1990 employment counts primarily from the Bureau's Occupational Employment Statistics survey were used. A description of the reweighting is included in an article "Introducing 1990 Weights for the Employment Cost Index," that was published in the June 1995 issue of Compensation and Working Conditions, and which is available upon request. From June 1986 through December 1994, employment counts from the 1980 Census were used as weights. Prior to June 1986, employment counts from the 1970 Census were used.

For the series based on bargaining status, region, or area size, employment data are not available from the Census. The employment weights are reallocated within these series each quarter based on the current ECI sample. The indexes for these series, consequently, are not strictly comparable to those for the aggregate, industry, and occupation series. A fuller explanation of the calculation of index numbers appears in an article, "Estimation procedures for the Employment Cost Index," in the May 1982 issue of the Monthly Labor Review.

Beginning with the March 1990 ECI release, indexes were rebased to June 1989=100. A description of the rebasing is included in the article "Employment Cost Index Rebased to September 1989," in the April 1990 issue of the Monthly Labor Review.

Beginning with the December 1990 ECI release, seasonally adjusted data are available for selected ECI series. Seasonal adjustment removes the effects of events that follow a more or less regular pattern each year. These adjustments make nonseasonal patterns easier to spot. ECI series are seasonally adjusted using either direct or composite seasonally adjusted estimates. Industry and occupational series, such as construction and service occupations, are adjusted directly. More aggregate series, such as civilian or private industry workers, use composite estimates. The composite estimates could be obtained by aggregating either the industry or the occupational components, and the results may differ depending on which method is used. The aggregate seasonally adjusted ECI series are estimated by aggregating the component seasonally adjusted industry series, so they are not necessarily a weighted average of the component occupation series.

The costs per hour worked of compensation components, based on March 1996 data from the ECI, are published in a separate news release titled "Employer Costs for Employee Compensation - March 1996." A description of the cost levels is provided in the article "Analyzing employers' costs for wages, salaries, and benefits" in the October 1987 issue of the Monthly Labor Review. The cost levels, which are published annually, with March as the reference month, are calculated with current employment weights, rather than the fixed 1990 weights used in computing the ECI. Therefore, year-to-year changes in the cost levels will usually differ from those in the ECI.

More detailed information on the ECI is available in several sources. These include an annual bulletin, Employment Cost Indexes and Levels, 1975-95, (Bulletin 2466); a chapter in the BLS Handbook of Methods (Bulletin 2490), "National Compensation Measures," and several articles published in the Monthly Labor Review and Compensation and Working Conditions. The annual bulletin is available from the Superintendent of Documents, U.S. Government Printing Office, Washington, D.C. 20402, or Bureau of Labor Statistics, Publications Sales Center, P.O. Box 2145, Chicago, Illinois 60690, 312-353-1880. Reprints of the articles plus other descriptive pieces and a complete historical listing are available upon request by calling 202/606-6199 or email ocltinfo@bls.gov. ECI historical data are also available on data diskettes.

Information in this release will be made available to sensory impaired individuals upon request. Voice phone: 202-606-7828, Telecommunications Device for the Deaf (TDD) phone: 202-606-5897, TDD Message Referral Phone Number: 1-800-326-2577.