



Transmission of material in this release is embargoed until  
**8:30 a.m. (EST) Thursday, January 12, 2017**

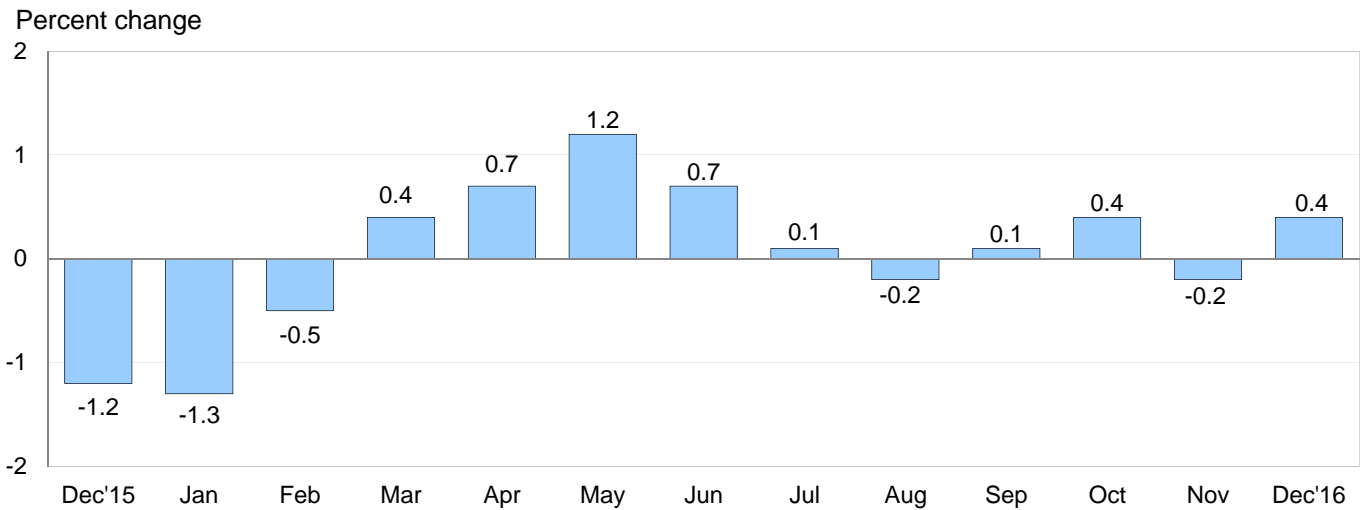
USDL-17-0034

Technical information: (202) 691-7101 • MXPinfo@bls.gov • www.bls.gov/mxp  
 Media contact: (202) 691-5902 • PressOffice@bls.gov

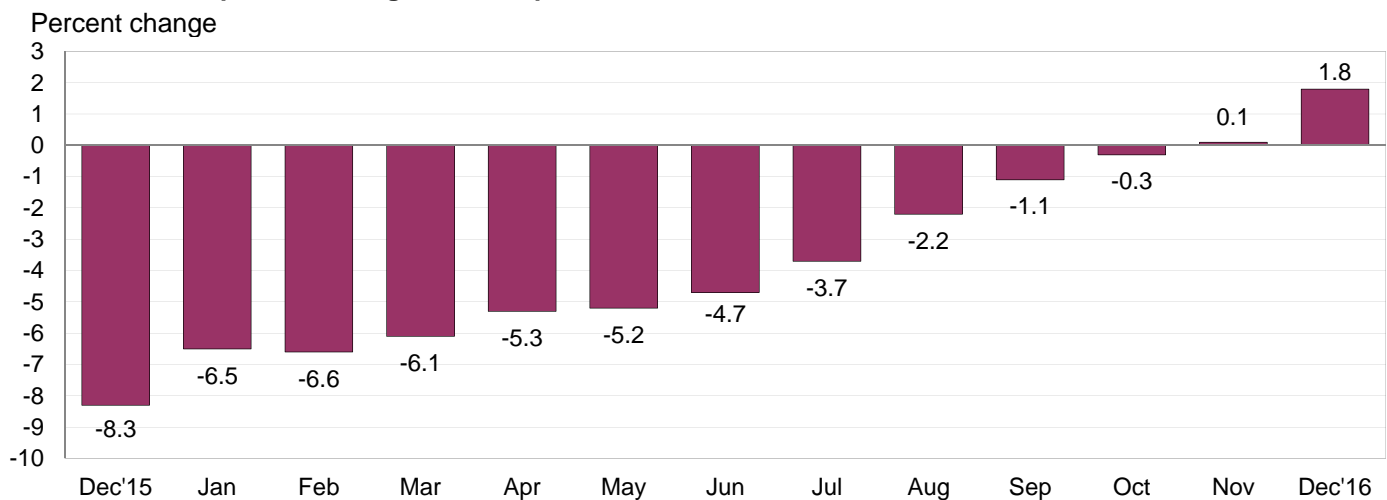
### U.S. IMPORT AND EXPORT PRICE INDEXES – DECEMBER 2016

Prices for U.S. imports rose 0.4 percent in December, the U.S. Bureau of Labor Statistics reported today, after a 0.2-percent decline the previous month. The advance in December was primarily driven by higher fuel prices which more than offset lower nonfuel prices. U.S. export prices advanced in December, rising 0.3 percent following a 0.1-percent decrease in November.

**Chart 1. One-month percent change in the Import Price Index: December 2015 – December 2016**



**Chart 2. 12-month percent change in the Import Price Index: December 2015 – December 2016**



**All Imports:** Import prices resumed an upward trend in December, rising 0.4 percent following a 0.2-percent decline in November. Prices for overall imports advanced 1.8 percent between December 2015 and December 2016, the largest 12-month increase since the index rose 3.5 percent in March 2012. The increase in 2016 was the first calendar-year advance since import prices rose 8.5 percent in 2011.

**Fuel Imports:** Prices for import fuel advanced 7.3 percent in December, the largest monthly increase since the index rose 10.5 percent in June. The December increase was primarily led by a 7.9-percent advance in petroleum prices. Natural gas prices also rose in December, increasing 2.2 percent. The price index for import fuel advanced 25.0 percent in 2016 following a 41.0-percent drop the previous year. The 2016 increase was the first year that fuel prices rose since a 24.9-percent rise in 2011, and the largest calendar-year advance since a 62.2-percent jump in 2009.

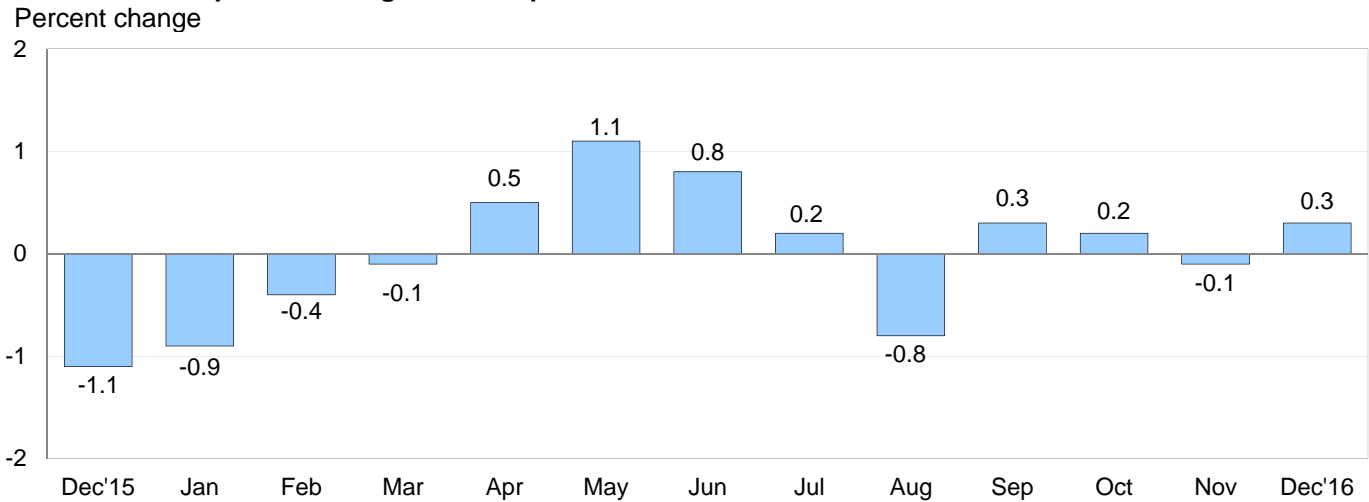
**All Imports Excluding Fuel:** The price index for nonfuel imports declined for the third consecutive month in December, falling 0.2 percent. The December drop matched a 0.2-percent decline in June and those were the largest drops since the index decreased 0.3 percent in December 2015. In December 2016, the decrease was led by lower prices for foods, feeds, and beverages as well as each of the finished goods areas. In contrast, nonfuel industrial supplies and materials prices rose. Nonfuel import prices edged down 0.1 percent in 2016 following a 3.4-percent drop the previous year.

**Table A. Percent change in Import and Export Price Indexes, selected categories**

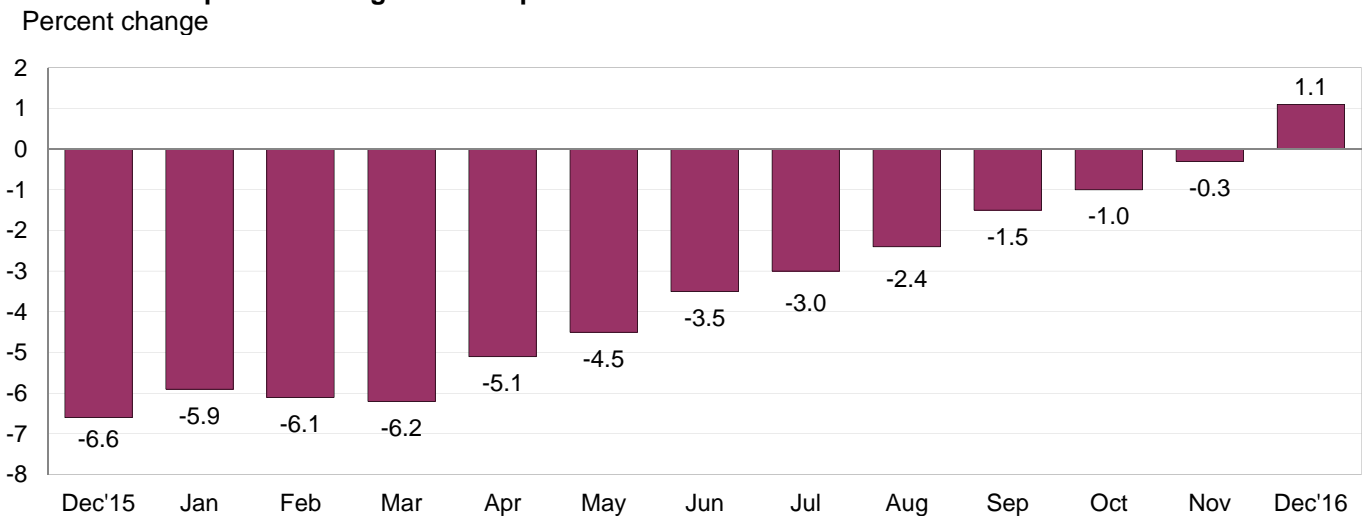
| Month                  | IMPORTS           |                   |                 | EXPORTS     |                      |                          |
|------------------------|-------------------|-------------------|-----------------|-------------|----------------------|--------------------------|
|                        | All imports       | Fuel imports      | Nonfuel imports | All exports | Agricultural exports | Non-agricultural exports |
| <b>2015</b>            |                   |                   |                 |             |                      |                          |
| December.....          | -1.2              | -10.0             | -0.3            | -1.1        | -0.9                 | -1.1                     |
| <b>2016</b>            |                   |                   |                 |             |                      |                          |
| January.....           | -1.3              | -15.6             | -0.1            | -0.9        | -1.3                 | -0.9                     |
| February.....          | -0.5              | -6.8              | -0.1            | -0.4        | 0.7                  | -0.6                     |
| March.....             | 0.4               | 8.5               | -0.1            | -0.1        | -2.1                 | 0.2                      |
| April.....             | 0.7               | 9.8               | 0.1             | 0.5         | 0.8                  | 0.4                      |
| May.....               | 1.2               | 12.7              | 0.3             | 1.1         | 3.0                  | 1.0                      |
| June.....              | 0.7               | 10.5              | -0.2            | 0.8         | 2.5                  | 0.5                      |
| July.....              | 0.1               | -2.1              | 0.3             | 0.2         | -0.3                 | 0.3                      |
| August.....            | -0.2              | -3.4              | 0.0             | -0.8        | -3.4                 | -0.6                     |
| September.....         | 0.1               | 1.3 <sup>r</sup>  | 0.0             | 0.3         | -1.0 <sup>r</sup>    | 0.5                      |
| October.....           | 0.4               | 6.5 <sup>r</sup>  | -0.1            | 0.2         | 0.5                  | 0.2                      |
| November.....          | -0.2 <sup>r</sup> | -2.2 <sup>r</sup> | -0.1            | -0.1        | 0.6                  | -0.1                     |
| December.....          | 0.4               | 7.3               | -0.2            | 0.3         | -0.3                 | 0.4                      |
| Dec. 2014 to 2015..... | -8.3              | -41.0             | -3.4            | -6.6        | -12.9                | -5.9                     |
| Dec. 2015 to 2016..... | 1.8               | 25.0              | -0.1            | 1.1         | -0.5                 | 1.3                      |

r Revised

**Chart 3. One-month percent change in the Export Price Index: December 2015 – December 2016**



**Chart 4. 12-month percent change in the Export Price Index: December 2015 – December 2016**



**All Exports:** Export prices advanced 0.3 percent in December matching the 0.3-percent rise in September; those were the largest increases for the index since a 0.8-percent rise in June. In December, higher nonagricultural prices more than offset declining agricultural prices. Prices for overall exports rose 1.1 percent for the year ended in December, the first 12-month increase since the index advanced 0.4 percent in August 2014 and the largest over-the-year rise since a 1.5-percent increase in February 2013.

**Agricultural Exports:** Prices for agricultural exports decreased 0.3 percent in December following a 0.6-percent increase in November and a 0.5-percent advance in October. The December drop was led by an 8.0-percent decline in vegetable prices and a 4.9-percent fall in fruit prices. The price index for agricultural exports declined 0.5 percent in 2016, after decreasing 12.9 percent in 2015. Agricultural prices have not recorded a calendar-year advance since the index rose 13.4 percent in 2012.

**All Exports Excluding Agriculture:** Nonagricultural prices increased 0.4 percent in December, after edging down 0.1 percent in November. The December increase was driven by higher prices for nonagricultural industrial supplies and materials which more than offset lower finished goods prices. The price index for nonagricultural exports increased 1.3 percent in 2016, the first calendar-year advance since the index rose 4.0 percent in 2011.

## SELECTED DECEMBER HIGHLIGHTS

### Import Prices

**Imports by Locality of Origin:** Import prices from China recorded no change in December. The price index for imports from China declined 1.7 percent in 2016, the same decrease recorded in 2015; those are the largest calendar-year drops since the index fell 1.8 percent in 2009. Prices for imports from Japan also recorded no change in December, but in contrast to import prices from China, increased over the past year. The price index for imports from Japan rose 1.5 percent in 2016, the first calendar-year advance since a 0.7-percent rise in 2012 and the largest since a 2.3-percent increase in 2011. Prices for imports from Canada and Mexico each rose in December, up 2.3 percent and 0.3 percent, respectively. Import prices from the European Union fell 0.2 percent in December.

**Nonfuel Industrial Supplies and Materials:** The price index for nonfuel industrial supplies and materials advanced 0.6 percent in December, after recording no change in November. The December advance was led by higher prices for steelmaking materials, chemicals, and industrial agricultural products.

**Finished Goods:** Each of the major finished goods price indexes decreased in December. Consumer goods prices declined 0.3 percent for the second consecutive month, and decreased 1.0 percent in 2016. The 2016 decline was the largest calendar-year decrease since consumer goods prices fell 1.2 percent in 2000. Prices for capital goods declined 0.2 percent in December and automotive vehicles prices edged down 0.1 percent.

**Foods, Feeds, and Beverages:** The price index for foods, feeds, and beverages declined 1.4 percent in December, after a 1.3-percent increase the previous month. The downturn was led by lower fruit prices which had contributed to the advance in November.

**Transportation Services:** Import air passenger fares advanced 1.3 percent in December following a 2.7-percent drop the previous month. The December increase was driven by a 17.4-percent rise in Asian fares and an 8.3-percent advance in Latin American/Caribbean fares which more than offset falling European fares. Import air passenger fares declined for the second consecutive year, dropping 4.2 percent in 2016, after decreasing 9.9 percent in 2015. Prices for import air freight fell 0.7 percent in December and 0.9 percent over the past 12 months.

### Export Prices

**Nonagricultural Industrial Supplies and Materials:** Nonagricultural industrial supplies and materials prices rose 2.0 percent in December, led by a 7.7-percent increase in export fuel prices.

**Finished Goods:** Export finished goods prices declined overall in December. Prices for consumer goods fell 1.0 percent, the largest monthly decline since the index fell 1.4 percent in June 1991. Prices for automotive vehicles declined 0.2 percent. Capital goods prices recorded no change in December. Over the past year, the price indexes for consumer goods and automotive vehicles decreased 2.5 percent and 0.8 percent, respectively, in each case the largest calendar-year decline since the indexes were first published.

**Transportation Services:** Export air passenger fares rose 7.7 percent in December following a 4.1-percent rise in November and a 2.5-percent advance in October. In December, European, Asian, and Latin American/Caribbean fares all increased. Overall export air passenger fares advanced 4.6 percent in 2016, after decreasing 14.6 percent the previous year. The price index for export air freight rose 0.2 percent in December; despite the advance, prices for export air freight fell 1.0 percent over the past 12 months.

---

**Import and Export Price Index data for January 2017 are scheduled for release on Friday, February 10, 2017 at 8:30 a.m. (EST).**

**Table 1. U.S. import price indexes and percent changes for selected categories of goods: December 2015 to December 2016**

[2000=100, unless otherwise noted]

| Description   | End Use | Relative importance Nov. 2016 <sup>1</sup> | Index     |           | Percent change         |                         |                         |                        |                        |
|---|---------|--|-----------|-----------|------------------------|-------------------------|-------------------------|------------------------|------------------------|
|   |         |  | Nov. 2016 | Dec. 2016 | Annual                 | Monthly                 |                         |                        |                        |
|   |         |  |           |           | Dec. 2015 to Dec. 2016 | Aug. 2016 to Sept. 2016 | Sept. 2016 to Oct. 2016 | Oct. 2016 to Nov. 2016 | Nov. 2016 to Dec. 2016 |
| <b>All commodities</b> .....  |         | 100.000                                    | 120.9     | 121.4     | 1.8                    | 0.1                     | 0.4                     | -0.2                   | 0.4                    |
| <b>All imports excluding food and fuels (Dec. 2010=100)</b> .....         |         | 85.003                                     | 98.0      | 97.9      | -0.4                   | -0.1                    | -0.1                    | -0.1                   | -0.1                   |
| <b>All imports excluding petroleum</b> .....                              |         | 92.097                                     | 111.0     | 110.8     | 0.0                    | 0.1                     | -0.2                    | 0.0                    | -0.2                   |
| <b>All imports excluding fuels (Dec. 2001=100)</b> .....                  |         | 91.413                                     | 115.0     | 114.8     | -0.1                   | 0.0                     | -0.1                    | -0.1                   | -0.2                   |
| <b>Foods, feeds, &amp; beverages</b> .....                                | 0       | 6.410                                      | 181.9     | 179.4     | 4.1                    | 0.4                     | -0.7                    | 1.3                    | -1.4                   |
| Agricultural foods, feeds & beverages, excluding distilled beverages..... | 00      | 4.981                                      | 200.1     | 196.6     | 3.4                    | 0.4                     | -1.0                    | 1.6                    | -1.7                   |
| Nonagricultural foods (fish, distilled beverages).....                    | 01      | 1.429                                      | 140.9     | 140.5     | 6.2                    | 0.8                     | 0.5                     | 0.2                    | -0.3                   |
| <b>Industrial supplies &amp; materials</b> .....                          | 1       | 22.018                                     | 158.6     | 163.7     | 10.5                   | 0.1                     | 2.1                     | -0.9                   | 3.2                    |
| Industrial supplies & materials excluding petroleum.....                  |         | 14.114                                     | 141.5     | 142.4     | 2.9                    | -0.3                    | -0.8                    | 0.4                    | 0.6                    |
| Industrial supplies & materials excluding fuels (Dec. 2001=100).....      |         | 13.430                                     | 160.0     | 161.0     | 2.4                    | -0.7                    | -0.6                    | 0.0                    | 0.6                    |
| Industrial supplies & materials, durable....                              |         | 8.195                                      | 149.6     | 150.5     | 4.9                    | -0.9                    | -1.2                    | 0.1                    | 0.6                    |
| Industrial supplies & materials nondurable excluding petroleum.....       |         | 5.236                                      | 131.1     | 132.2     | 0.3                    | 0.5                     | -0.2                    | 0.5                    | 0.8                    |
| Fuels & lubricants.....   | 10      | 8.588                                      | 158.0     | 169.6     | 25.0                   | 1.3                     | 6.5                     | -2.2                   | 7.3                    |
| Petroleum & petroleum products.....                                       | 100     | 7.904                                      | 169.2     | 182.5     | 26.2                   | 0.9                     | 7.5                     | -3.0                   | 7.9                    |
| Crude.....  | 10000   | 5.612                                      | 168.4     | 187.1     | 33.7                   | -0.4                    | 8.1                     | -5.4                   | 11.1                   |
| Fuels, n.e.s.-coals & gas.....  | 101     | 0.516                                      | 102.5     | 104.5     | 16.9                   | 9.2                     | -3.8                    | 9.3                    | 2.0                    |
| Gas-natural.....  | 10110   | 0.424                                      | 86.9      | 88.8      | 24.0                   | 11.5                    | -4.6                    | 10.8                   | 2.2                    |
| Paper & paper base stocks.....  | 11      | 0.559                                      | 104.4     | 105.6     | -2.6                   | -1.1                    | -0.8                    | -0.6                   | 1.1                    |
| Materials associated with nondurable supplies & materials.....            | 12      | 4.742                                      | 149.4     | 150.2     | -1.1                   | -0.1                    | 0.5                     | -0.2                   | 0.5                    |
| Selected building materials.....  | 13      | 1.293                                      | 136.5     | 137.4     | 2.3                    | -0.3                    | -0.1                    | -0.6                   | 0.7                    |
| Unfinished metals related to durable goods.....                           | 14      | 3.475                                      | 197.1     | 199.1     | 12.4                   | -1.7                    | -2.1                    | 0.7                    | 1.0                    |
| Finished metals related to durable goods.....                             | 15      | 1.665                                      | 143.7     | 143.8     | -1.2                   | -0.8                    | -1.3                    | 0.1                    | 0.1                    |
| Nonmetals related to durable goods.....                                   | 16      | 1.696                                      | 107.5     | 107.8     | -0.6                   | 0.3                     | -0.1                    | -0.4                   | 0.3                    |
| <b>Capital goods</b> .....  | 2       | 28.315                                     | 88.7      | 88.5      | -1.4                   | 0.1                     | -0.2                    | -0.1                   | -0.2                   |
| Electric generating equipment.....  | 20      | 3.453                                      | 116.0     | 116.2     | -0.3                   | 0.0                     | -0.1                    | 0.2                    | 0.2                    |
| Nonelectrical machinery.....  | 21      | 22.170                                     | 81.1      | 80.9      | -1.7                   | 0.1                     | -0.2                    | -0.2                   | -0.2                   |
| Transportation equipment excluding motor vehicles (Dec. 2001=100).....    | 22      | 2.692                                      | 136.3     | 136.2     | -0.6                   | -0.1                    | 0.0                     | 0.0                    | -0.1                   |
| <b>Automotive vehicles, parts &amp; engines</b> .....                     | 3       | 16.107                                     | 110.6     | 110.5     | 0.0                    | 0.1                     | 0.3                     | -0.1                   | -0.1                   |
| <b>Consumer goods, excluding automobiles</b> .....                        | 4       | 27.151                                     | 106.4     | 106.1     | -1.0                   | 0.0                     | 0.1                     | -0.3                   | -0.3                   |
| Nondurables, manufactured.....  | 40      | 12.979                                     | 119.3     | 119.3     | 0.0                    | -0.1                    | -0.1                    | 0.1                    | 0.0                    |
| Durables, manufactured.....   | 41      | 12.688                                     | 93.7      | 93.4      | -1.7                   | -0.1                    | 0.3                     | -0.5                   | -0.3                   |
| Nonmanufactured consumer goods.....                                       | 42      | 1.484                                      | 118.4     | 115.5     | -4.0                   | 0.4                     | 0.1                     | -0.2                   | -2.4                   |

<sup>1</sup> Relative importance figures are based on 2014 trade values.

NOTES: Data may be revised in each of the 3 months after original publication.

Dash = Not available

**Table 2. U.S. export price indexes and percent changes for selected categories of goods: December 2015 to December 2016**

[2000=100, unless otherwise noted]

| Description   | End Use | Relative importance Nov. 2016 <sup>1</sup> | Index     |           | Percent change                   |                         |                         |                        |                        |
|---|---------|--|-----------|-----------|----------------------------------|-------------------------|-------------------------|------------------------|------------------------|
|   |         |  | Nov. 2016 | Dec. 2016 | Annual<br>Dec. 2015 to Dec. 2016 | Monthly                 |                         |                        |                        |
|   |         |  |           |           |                                  | Aug. 2016 to Sept. 2016 | Sept. 2016 to Oct. 2016 | Oct. 2016 to Nov. 2016 | Nov. 2016 to Dec. 2016 |
| <b>All commodities</b> .....  |         | 100.000                                    | 120.7     | 121.1     | 1.1                              | 0.3                     | 0.2                     | -0.1                   | 0.3                    |
| <b>Agricultural commodities</b> .....   |         | 9.022                                      | 175.3     | 174.8     | -0.5                             | -1.0                    | 0.5                     | 0.6                    | -0.3                   |
| <b>All exports excluding food and fuels (Dec. 2010=100)</b> .....             |         | 84.430                                     | 98.3      | 98.1      | -0.1                             | 0.0                     | -0.2                    | 0.1                    | -0.2                   |
| <b>Nonagricultural commodities</b> .....                                      |         | 90.978                                     | 116.6     | 117.1     | 1.3                              | 0.5                     | 0.2                     | -0.1                   | 0.4                    |
| <b>Foods, feeds, &amp; beverages</b> .....                                    | 0       | 8.463                                      | 177.2     | 176.2     | -0.6                             | -0.8                    | 0.5                     | 0.7                    | -0.6                   |
| Agricultural foods, feeds & beverages, excluding distilled beverages.....     | 00      | 7.762                                      | 176.7     | 175.9     | -0.9                             | -1.1                    | 0.5                     | 0.9                    | -0.5                   |
| Nonagricultural foods (fish, distilled beverages).....                        | 01      | 0.701                                      | 191.9     | 186.8     | 2.5                              | 2.9                     | 0.2                     | -0.7                   | -2.7                   |
| <b>Industrial supplies &amp; materials</b> .....                              | 1       | 29.231                                     | 142.8     | 145.6     | 6.0                              | 1.3                     | 0.9                     | -0.3                   | 2.0                    |
| Industrial supplies & materials, durable....                                  |         | 10.745                                     | 155.0     | 154.6     | 4.7                              | 0.0                     | -0.8                    | 1.0                    | -0.3                   |
| Industrial supplies & materials, nondurable.....                              |         | 18.487                                     | 137.1     | 141.6     | 6.7                              | 2.0                     | 2.0                     | -1.0                   | 3.3                    |
| Agricultural industrial supplies & materials.....                             | 10      | 1.260                                      | 172.0     | 172.9     | 1.8                              | -0.3                    | 0.8                     | -1.3                   | 0.5                    |
| <b>Nonagricultural industrial supplies &amp; materials</b> .....              |         | 27.971                                     | 141.8     | 144.7     | 6.1                              | 1.4                     | 0.9                     | -0.3                   | 2.0                    |
| Fuels & lubricants.....   | 11      | 7.107                                      | 151.4     | 163.1     | 19.1                             | 5.9                     | 5.1                     | -2.9                   | 7.7                    |
| Nonagricultural supplies & materials excluding fuels & building materials.... | 12      | 19.816                                     | 149.7     | 149.8     | 2.0                              | -0.1                    | -0.5                    | 0.7                    | 0.1                    |
| Selected building materials.....  | 13      | 1.048                                      | 117.0     | 117.9     | 3.0                              | 0.8                     | -0.2                    | 0.3                    | 0.8                    |
| <b>Capital goods</b> .....  | 2       | 38.824                                     | 106.7     | 106.7     | -0.2                             | 0.0                     | -0.1                    | 0.0                    | 0.0                    |
| Electrical generating equipment.....  | 20      | 3.944                                      | 111.8     | 111.7     | -0.5                             | -0.3                    | -0.1                    | -0.1                   | -0.1                   |
| Nonelectrical machinery.....  | 21      | 26.137                                     | 93.7      | 93.6      | -1.0                             | 0.0                     | -0.1                    | 0.0                    | -0.1                   |
| Transportation equipment excluding motor vehicles (Dec. 2001=100).....        | 22      | 8.743                                      | 164.9     | 165.1     | 2.0                              | 0.1                     | 0.1                     | -0.1                   | 0.1                    |
| <b>Automotive vehicles, parts &amp; engines</b> .....                         | 3       | 10.674                                     | 112.8     | 112.6     | -0.8                             | 0.1                     | 0.1                     | 0.0                    | -0.2                   |
| <b>Consumer goods, excluding automotives</b> .....                            | 4       | 12.808                                     | 109.8     | 108.7     | -2.5                             | 0.2                     | -0.5                    | -0.2                   | -1.0                   |
| Nondurables, manufactured.....  | 40      | 5.829                                      | 105.9     | 105.2     | -1.9                             | 0.2                     | -0.5                    | -0.3                   | -0.7                   |
| Durables, manufactured.....   | 41      | 5.354                                      | 107.2     | 106.9     | -2.4                             | 0.1                     | -0.7                    | 0.0                    | -0.3                   |

<sup>1</sup> Relative importance figures are based on 2014 trade values.

NOTES: Data may be revised in each of the 3 months after original publication.

Dash = Not available

**Table 3. U.S. import price indexes and percent changes for selected categories of goods: December 2015 to December 2016**

[December 2005=100, unless otherwise noted]

| Description   | NAICS | Relative importance Nov. 2016 <sup>1</sup> | Index     |           | Percent change         |                         |                         |                        |                        |
|---|-------|--|-----------|-----------|------------------------|-------------------------|-------------------------|------------------------|------------------------|
|   |       |  | Nov. 2016 | Dec. 2016 | Annual                 | Monthly                 |                         |                        |                        |
|   |       |  |           |           | Dec. 2015 to Dec. 2016 | Aug. 2016 to Sept. 2016 | Sept. 2016 to Oct. 2016 | Oct. 2016 to Nov. 2016 | Nov. 2016 to Dec. 2016 |
| <b>Nonmanufacturing.....</b>                                      |       | 8.501                                      | 88.0      | 94.1      | 23.7                   | 0.6                     | 5.0                     | -2.7                   | 6.9                    |
| <b>Agriculture, forestry, fishing and hunting.....</b>            | 11    | 2.156                                      | 187.0     | 182.3     | 3.1                    | 1.5                     | -1.8                    | 2.4                    | -2.5                   |
| Crop production.....  | 111   | 1.790                                      | 206.1     | 196.7     | 2.6                    | 2.2                     | -2.1                    | 3.0                    | -4.6                   |
| Animal production (Dec. 2014=100).....                            | 112   | 0.184                                      | 70.8      | 73.6      | -4.5                   | -4.2                    | -4.7                    | -1.9                   | 4.0                    |
| <b>Mining.....</b>  | 21    | 6.345                                      | 76.0      | 83.7      | 31.6                   | 0.3                     | 7.3                     | -4.2                   | 10.1                   |
| Mining (except oil and gas) (Dec. 2006=100).....                  | 212   | 0.240                                      | 95.7      | 96.8      | -0.6                   | 0.7                     | 0.3                     | 0.1                    | 1.1                    |
| <b>Manufacturing.....</b>   |       | 91.192                                     | 108.9     | 108.8     | -0.2                   | 0.0                     | 0.1                     | -0.1                   | -0.1                   |
| <b>Manufacturing, part 1.....</b>                                 | 31    | 12.180                                     | 123.9     | 123.9     | 0.9                    | 0.2                     | 0.0                     | 0.1                    | 0.0                    |
| Food manufacturing.....   | 311   | 3.521                                      | 154.3     | 154.5     | 4.9                    | 0.4                     | -0.1                    | 0.5                    | 0.1                    |
| Beverage and tobacco product manufacturing.....                   | 312   | 1.088                                      | 118.0     | 118.0     | 0.2                    | 0.2                     | 0.3                     | -0.3                   | 0.0                    |
| Textile mills (Dec. 2011=100).....                                | 313   | 0.401                                      | 97.9      | 97.7      | -1.7                   | 0.1                     | -0.1                    | 0.2                    | -0.2                   |
| Textile product mills.....  | 314   | 0.895                                      | 109.0     | 108.8     | -1.8                   | 0.1                     | 0.0                     | 0.0                    | -0.2                   |
| Apparel manufacturing.....  | 315   | 4.359                                      | 111.2     | 111.2     | -0.2                   | 0.0                     | 0.0                     | 0.0                    | 0.0                    |
| Leather and allied product manufacturing.....                     | 316   | 1.915                                      | 123.0     | 123.0     | -1.1                   | -0.1                    | 0.0                     | 0.0                    | 0.0                    |
| <b>Manufacturing, part 2.....</b>                                 | 32    | 16.879                                     | 116.6     | 116.6     | 0.5                    | 0.3                     | 0.5                     | 0.6                    | 0.0                    |
| Wood product manufacturing.....                                   | 321   | 0.783                                      | 114.8     | 116.2     | 4.9                    | -0.5                    | 0.0                     | -0.8                   | 1.2                    |
| Paper manufacturing.....  | 322   | 1.058                                      | 103.8     | 104.5     | -1.3                   | -0.8                    | -0.5                    | -0.2                   | 0.7                    |
| Petroleum and coal products manufacturing.....                    | 324   | 2.134                                      | 80.3      | 79.8      | 7.4                    | 4.4                     | 5.0                     | 3.6                    | -0.6                   |
| Chemical manufacturing.....                                       | 325   | 9.394                                      | 130.1     | 130.3     | -0.6                   | -0.2                    | 0.1                     | 0.2                    | 0.2                    |
| Plastics and rubber products manufacturing.....                   | 326   | 2.274                                      | 117.4     | 116.8     | -1.3                   | -0.1                    | -0.3                    | 0.1                    | -0.5                   |
| Nonmetallic mineral product manufacturing.....                    | 327   | 1.029                                      | 129.2     | 128.9     | -1.2                   | 0.0                     | 0.0                     | -0.1                   | -0.2                   |
| <b>Manufacturing, part 3.....</b>                                 | 33    | 62.133                                     | 103.2     | 103.0     | -0.5                   | 0.0                     | -0.1                    | -0.2                   | -0.2                   |
| Primary metal manufacturing.....                                  | 331   | 4.213                                      | 130.3     | 131.5     | 9.1                    | -1.9                    | -1.7                    | 0.4                    | 0.9                    |
| Fabricated metal product manufacturing... ..                      | 332   | 3.085                                      | 121.5     | 121.3     | -2.1                   | 0.0                     | -0.3                    | -0.2                   | -0.2                   |
| Machinery manufacturing.....                                      | 333   | 7.682                                      | 116.3     | 116.1     | -1.4                   | 0.2                     | 0.0                     | -0.2                   | -0.2                   |
| Computer and electronic product manufacturing.....                | 334   | 17.850                                     | 75.8      | 75.8      | -1.9                   | 0.1                     | -0.1                    | -0.5                   | 0.0                    |
| Electrical equipment, appliance, and component manufacturing..... | 335   | 4.838                                      | 114.9     | 114.9     | -1.0                   | 0.1                     | 0.4                     | -0.1                   | 0.0                    |
| Transportation equipment manufacturing..                          | 336   | 17.315                                     | 109.8     | 109.7     | 0.1                    | 0.1                     | 0.3                     | -0.1                   | -0.1                   |
| Furniture and related product manufacturing.....                  | 337   | 1.653                                      | 114.5     | 114.4     | -0.6                   | 0.0                     | 0.0                     | -0.3                   | -0.1                   |
| Miscellaneous manufacturing.....                                  | 339   | 5.497                                      | 119.1     | 117.7     | -1.0                   | -0.2                    | -0.4                    | -0.2                   | -1.2                   |

<sup>1</sup> Relative importance figures are based on 2014 trade values.

NOTES: Data may be revised in each of the 3 months after original publication.

Dash = Not available

**Table 4. U.S. export price indexes and percent changes for selected categories of goods: December 2015 to December 2016**

[December 2005=100, unless otherwise noted]

| Description   | NAICS | Relative importance Nov. 2016 <sup>1</sup> | Index     |           | Percent change                |                         |                         |                        |                        |
|---|-------|--|-----------|-----------|-------------------------------|-------------------------|-------------------------|------------------------|------------------------|
|   |       |  | Nov. 2016 | Dec. 2016 | Annual Dec. 2015 to Dec. 2016 | Monthly                 |                         |                        |                        |
|   |       |  |           |           |                               | Aug. 2016 to Sept. 2016 | Sept. 2016 to Oct. 2016 | Oct. 2016 to Nov. 2016 | Nov. 2016 to Dec. 2016 |
| <b>Nonmanufacturing.....</b>                                      |       | 6.935                                      | 122.5     | 132.1     | 10.2                          | 0.1                     | 0.6                     | -0.3                   | 7.8                    |
| <b>Agriculture, forestry, fishing and hunting.....</b>            | 11    | 4.587                                      | 152.5     | 151.6     | -1.7                          | -0.9                    | 1.1                     | 1.2                    | -0.6                   |
| Crop production.....  | 111   | 4.304                                      | 158.8     | 158.2     | -1.0                          | -1.5                    | 1.1                     | 1.4                    | -0.4                   |
| <b>Mining.....</b>  | 21    | 2.348                                      | 67.0      | 83.3      | 35.9                          | 2.1                     | -0.3                    | -3.3                   | 24.3                   |
| Mining (except oil and gas).....                                  | 212   | 1.296                                      | 89.3      | 94.3      | 22.2                          | 1.3                     | 4.4                     | 6.4                    | 5.6                    |
| <b>Manufacturing.....</b>   |       | 91.707                                     | 111.4     | 111.5     | 0.7                           | 0.3                     | 0.2                     | -0.1                   | 0.1                    |
| <b>Manufacturing, part 1.....</b>                                 | 31    | 6.756                                      | 135.0     | 135.2     | 1.2                           | -0.4                    | -0.3                    | -0.1                   | 0.1                    |
| Food manufacturing.....   | 311   | 4.559                                      | 152.4     | 152.8     | 2.3                           | -0.5                    | -0.2                    | 0.3                    | 0.3                    |
| Beverage and tobacco product manufacturing.....                   | 312   | 0.618                                      | 108.0     | 108.2     | 0.8                           | -0.7                    | -0.8                    | -3.6                   | 0.2                    |
| <b>Manufacturing, part 2.....</b>                                 | 32    | 23.311                                     | 106.4     | 107.8     | 3.1                           | 1.4                     | 1.3                     | -0.7                   | 1.3                    |
| Paper manufacturing.....  | 322   | 1.687                                      | 117.9     | 118.3     | -3.2                          | -0.2                    | -1.2                    | -0.8                   | 0.3                    |
| Printing and related support activities (Dec. 2015=100).....      | 323   | 0.268                                      | 100.0     | 100.0     | 0.0                           | 0.0                     | 0.0                     | 0.0                    | 0.0                    |
| Petroleum and coal products manufacturing.....                    | 324   | 4.656                                      | 88.9      | 94.8      | 22.3                          | 7.5                     | 7.7                     | -3.7                   | 6.6                    |
| Chemical manufacturing.....                                       | 325   | 12.960                                     | 114.2     | 114.3     | -0.5                          | 0.0                     | 0.1                     | 0.3                    | 0.1                    |
| Plastics and rubber products manufacturing.....                   | 326   | 2.351                                      | 113.8     | 113.4     | -2.7                          | 0.1                     | -0.6                    | 0.2                    | -0.4                   |
| Nonmetallic mineral product manufacturing.....                    | 327   | 0.865                                      | 112.7     | 112.4     | -0.3                          | 0.2                     | -0.3                    | 0.1                    | -0.3                   |
| <b>Manufacturing, part 3.....</b>                                 | 33    | 61.640                                     | 111.0     | 110.6     | -0.3                          | 0.0                     | -0.2                    | 0.0                    | -0.4                   |
| Primary metal manufacturing.....                                  | 331   | 4.314                                      | 136.3     | 132.9     | 4.4                           | -0.3                    | -1.8                    | 0.7                    | -2.5                   |
| Fabricated metal product manufacturing...                         | 332   | 3.295                                      | 130.4     | 130.2     | 0.3                           | 0.0                     | -0.1                    | 0.0                    | -0.2                   |
| Machinery manufacturing.....                                      | 333   | 11.573                                     | 125.8     | 125.6     | 0.4                           | -0.1                    | 0.1                     | -0.2                   | -0.2                   |
| Computer and electronic product manufacturing.....                | 334   | 14.299                                     | 82.9      | 82.8      | -2.2                          | -0.1                    | -0.5                    | 0.1                    | -0.1                   |
| Electrical equipment, appliance, and component manufacturing..... | 335   | 3.816                                      | 112.0     | 112.0     | -0.4                          | 0.0                     | -0.1                    | 0.0                    | 0.0                    |
| Transportation equipment manufacturing..                          | 336   | 18.338                                     | 122.3     | 122.2     | 0.5                           | 0.1                     | 0.2                     | 0.0                    | -0.1                   |
| Furniture and related product manufacturing (Dec. 2011=100).....  | 337   | 0.418                                      | 118.0     | 117.3     | 6.4                           | 0.2                     | 0.1                     | 0.0                    | -0.6                   |
| Miscellaneous manufacturing.....                                  | 339   | 5.586                                      | 119.7     | 117.8     | -3.5                          | 0.1                     | -0.1                    | 0.1                    | -1.6                   |

<sup>1</sup> Relative importance figures are based on 2014 trade values.

NOTES: Data may be revised in each of the 3 months after original publication.

Dash = Not available



**Table 5. U.S. import price indexes and percent changes for selected categories of goods: December 2015 to December 2016**

[2000=100, unless otherwise noted]

| Description  | Harmonized system | Relative importance Nov. 2016 <sup>1</sup> | Index     |           | Percent change         |                         |                         |                        |                        |
|--|-------------------|--|-----------|-----------|------------------------|-------------------------|-------------------------|------------------------|------------------------|
|  |                   |  | Nov. 2016 | Dec. 2016 | Annual                 | Monthly                 |                         |                        |                        |
|  |                   |  |           |           | Dec. 2015 to Dec. 2016 | Aug. 2016 to Sept. 2016 | Sept. 2016 to Oct. 2016 | Oct. 2016 to Nov. 2016 | Nov. 2016 to Dec. 2016 |
| <b>Live animals; animal products.....</b>  | I                 | 1.468                                      | 188.5     | 187.9     | 6.0                    | -0.2                    | -1.2                    | 0.1                    | -0.3                   |
| Meat and edible meat offal.....  | 02                | 0.386                                      | 237.3     | 234.4     | 7.2                    | -0.4                    | -1.8                    | 1.3                    | -1.2                   |
| Fish and crustaceans, molluscs and other aquatic invertebrates.....                | 03                | 0.801                                      | 144.9     | 143.8     | 11.4                   | 1.3                     | 0.3                     | 0.3                    | -0.8                   |
| <b>Vegetable products.....</b>   | II                | 2.294                                      | 228.0     | 218.9     | 4.7                    | 3.2                     | -1.0                    | 2.7                    | -4.0                   |
| Edible vegetables, roots, and tubers.....  | 07                | 0.534                                      | 485.2     | 490.7     | -5.6                   | 21.5                    | -4.3                    | -3.6                   | 1.1                    |
| Edible fruit and nuts; peel of citrus fruit or melons.....                         | 08                | 0.834                                      | 137.3     | 124.8     | 27.9                   | -4.0                    | 0.2                     | 7.8                    | -9.1                   |
| Coffee, tea, mate and spices.....  | 09                | 0.387                                      | 244.9     | 233.8     | 1.1                    | 0.6                     | -0.6                    | 4.5                    | -4.5                   |
| Oilseeds & misc grains, seeds, plants, straw & fodder (Dec. 2015=100).....         | 12                | 0.161                                      | 99.1      | 89.7      | -10.3                  | -7.9                    | 2.1                     | 2.1                    | -9.5                   |
| <b>Animal or vegetable fats and oils (Dec. 2009=100).....</b>                      | III               | 0.298                                      | 113.8     | 118.0     | 21.5                   | 3.3                     | -0.8                    | 3.5                    | 3.7                    |
| <b>Prepared foodstuffs, beverages, and tobacco.....</b>                            | IV                | 2.771                                      | 160.3     | 160.9     | 1.1                    | -0.1                    | -0.1                    | -0.2                   | 0.4                    |
| Sugars and sugar confectionary (Dec. 2012=100).....                                | 17                | 0.195                                      | 88.0      | 90.2      | 6.2                    | -0.2                    | 0.5                     | 0.9                    | 2.5                    |
| Cocoa and cocoa preparations (Dec. 2009=100).....                                  | 18                | 0.229                                      | 106.5     | 104.8     | -9.3                   | 1.4                     | -3.0                    | -4.1                   | -1.6                   |
| Preparations of cereals, flour, starch or milk; bakers' wares (Dec. 2007=100)..... | 19                | 0.285                                      | 132.7     | 132.4     | 0.2                    | -0.1                    | 0.0                     | -0.2                   | -0.2                   |
| Preparations of vegetables, fruit, nuts, or other parts of plants.....             | 20                | 0.335                                      | 161.0     | 163.6     | 5.8                    | 0.9                     | 1.1                     | -0.2                   | 1.6                    |
| Beverages, spirits, and vinegar.....   | 22                | 1.026                                      | 127.9     | 127.9     | -0.1                   | 0.1                     | 0.2                     | -0.2                   | 0.0                    |
| <b>Mineral products.....</b>   | V                 | 8.620                                      | 157.4     | 168.9     | 24.2                   | 1.1                     | 6.6                     | -2.2                   | 7.3                    |
| Mineral fuels, oils and residuals, bituminous substances and mineral waxes.....    | 27                | 8.381                                      | 155.1     | 166.7     | 25.4                   | 1.2                     | 6.8                     | -2.3                   | 7.5                    |
| <b>Products of the chemical or allied industries.....</b>                          | VI                | 8.777                                      | 145.6     | 146.0     | -0.2                   | -0.2                    | -0.3                    | 0.0                    | 0.3                    |
| Inorganic chemicals.....   | 28                | 0.535                                      | 249.7     | 254.7     | -8.2                   | -1.1                    | -2.0                    | 0.0                    | 2.0                    |
| Organic chemicals.....   | 29                | 2.374                                      | 120.4     | 121.4     | -0.3                   | 0.3                     | -0.3                    | -0.3                   | 0.8                    |
| Pharmaceutical products.....   | 30                | 3.801                                      | 140.4     | 140.4     | 1.2                    | -0.3                    | -0.1                    | -0.1                   | 0.0                    |
| Fertilizers (Dec. 2009=100).....   | 31                | 0.272                                      | 74.1      | 75.5      | -18.4                  | -4.0                    | -0.4                    | 5.6                    | 1.9                    |
| Tanning extracts; dye, pigments, varnish, paints & putty (Dec. 2011=100).....      | 32                | 0.197                                      | 102.3     | 101.4     | 3.7                    | 0.3                     | 0.9                     | -0.2                   | -0.9                   |
| Miscellaneous chemical products.....   | 38                | 0.668                                      | 101.9     | 101.8     | 14.0                   | 0.2                     | -0.1                    | 0.1                    | -0.1                   |
| <b>Plastics and articles thereof; rubber and articles thereof.....</b>             | VII               | 3.507                                      | 137.2     | 137.3     | -0.3                   | 0.0                     | 0.4                     | -0.1                   | 0.1                    |
| Plastics and articles thereof.....   | 39                | 2.236                                      | 139.9     | 139.1     | -2.0                   | 0.1                     | 0.3                     | -0.4                   | -0.6                   |
| Rubber and articles thereof.....   | 40                | 1.271                                      | 133.9     | 135.6     | 2.9                    | -0.2                    | 0.6                     | 0.4                    | 1.3                    |
| <b>Raw hides, skins, leather, furskins, travel goods, etc.....</b>                 | VIII              | 0.704                                      | 123.4     | 123.3     | -2.8                   | 0.0                     | 0.0                     | 0.1                    | -0.1                   |
| Articles of leather; travel goods, bags, etc. of various materials.....            | 42                | 0.671                                      | 128.7     | 128.6     | -1.1                   | -0.1                    | 0.1                     | 0.0                    | -0.1                   |
| <b>Wood, wood charcoal, cork, straw, basketware and wickerwork.....</b>            | IX                | 0.819                                      | 139.8     | 141.5     | 4.7                    | -0.4                    | -0.1                    | -0.8                   | 1.2                    |
| Wood and articles of wood; wood charcoal (Dec. 2014=100).....                      | 44                | 0.794                                      | 96.1      | 97.2      | 4.7                    | -0.4                    | 0.0                     | -0.8                   | 1.1                    |
| <b>Woodpulp, recovered paper, and paper products.....</b>                          | X                 | 1.141                                      | 108.8     | 109.8     | -0.5                   | -0.5                    | -0.2                    | 0.0                    | 0.9                    |
| Paper and paperboard; articles of paper pulp, paper or paperboard.....             | 48                | 0.774                                      | 103.6     | 103.6     | -1.1                   | -0.3                    | -0.8                    | 0.1                    | 0.0                    |

See footnotes at end of table.

**Table 5. U.S. import price indexes and percent changes for selected categories of goods: December 2015 to December 2016 — Continued**  
 [2000=100, unless otherwise noted]

| Description  | Harmoni-<br>zied<br>system | Relative<br>importance<br>Nov.<br>2016 <sup>1</sup> | Index        |              | Percent change                  |                                  |                                  |                                 |                                 |
|--|----------------------------|---|--------------|--------------|---------------------------------|----------------------------------|----------------------------------|---------------------------------|---------------------------------|
|  |                            |   | Nov.<br>2016 | Dec.<br>2016 | Annual                          | Monthly                          |                                  |                                 |                                 |
|  |                            |   |              |              | Dec.<br>2015 to<br>Dec.<br>2016 | Aug.<br>2016 to<br>Sept.<br>2016 | Sept.<br>2016 to<br>Oct.<br>2016 | Oct.<br>2016 to<br>Nov.<br>2016 | Nov.<br>2016 to<br>Dec.<br>2016 |
| Printed matter (Dec. 2015=100).....  | 49                         | 0.218   | 103.9        | 105.8        | 5.8                             | 0.3                              | 1.5                              | 1.5                             | 1.8                             |
| <b>Textile and textile articles.....</b>   | XI                         | 5.475   | 113.2        | 113.1        | -0.5                            | 0.1                              | -0.1                             | 0.0                             | -0.1                            |
| Articles of apparel and clothing accessories,<br>knitted or crocheted.....                     | 61                         | 2.267   | 103.7        | 103.8        | -0.2                            | 0.1                              | 0.1                              | 0.0                             | 0.1                             |
| Articles of apparel and clothing accessories,<br>not knitted or crocheted.....                 | 62                         | 1.887   | 119.2        | 119.1        | -0.3                            | -0.1                             | -0.2                             | -0.1                            | -0.1                            |
| Made-up or worn textile articles.....  | 63                         | 0.635   | 103.5        | 103.4        | -1.3                            | 0.1                              | -0.1                             | 0.2                             | -0.1                            |
| <b>Headgear, umbrellas, artificial flowers,<br/>etc.....</b>                                   | XII                        | 1.523   | 122.3        | 122.3        | -0.9                            | -0.1                             | 0.0                              | -0.1                            | 0.0                             |
| Footwear and parts of such articles.....   | 64                         | 1.299   | 121.4        | 121.4        | -0.9                            | -0.1                             | 0.0                              | -0.1                            | 0.0                             |
| <b>Stone, plaster, cement, asbestos,<br/>ceramics, glass etc.....</b>                          | XIII                       | 0.955   | 130.8        | 130.4        | -1.2                            | -0.1                             | -0.1                             | 0.0                             | -0.3                            |
| Articles of stone, plaster, cement, asbestos,<br>or mica (Dec. 2015=100).....                  | 68                         | 0.327   | 97.7         | 97.0         | -3.0                            | -0.4                             | 0.0                              | -0.1                            | -0.7                            |
| Ceramic products.....  | 69                         | 0.281   | 137.0        | 137.0        | -0.8                            | 0.1                              | -0.1                             | -0.1                            | 0.0                             |
| Glass and glassware.....   | 70                         | 0.347   | 129.7        | 129.7        | 0.2                             | 0.2                              | -0.1                             | -0.1                            | 0.0                             |
| <b>Pearls, stones, precious metals, imitation<br/>jewelry, and coins.....</b>                  | XIV                        | 3.113   | 172.9        | 165.0        | 3.4                             | -1.3                             | -2.2                             | 0.1                             | -4.6                            |
| <b>Base metals and articles of base metals. ...</b>  | XV                         | 5.444   | 155.7        | 159.2        | 2.9                             | -0.6                             | -0.8                             | 0.4                             | 2.2                             |
| Iron and steel.....  | 72                         | 1.316   | 167.8        | 175.9        | 11.6                            | -1.4                             | -2.6                             | 0.1                             | 4.8                             |
| Articles of iron or steel.....   | 73                         | 1.689   | 136.1        | 136.1        | -4.2                            | -0.6                             | -0.7                             | -0.1                            | 0.0                             |
| Copper and articles thereof.....   | 74                         | 0.369   | 248.6        | 270.3        | 6.5                             | 0.1                              | -1.1                             | 3.9                             | 8.7                             |
| Aluminum and articles thereof.....   | 76                         | 0.726   | 121.4        | 122.0        | 0.5                             | -1.0                             | 0.8                              | 0.7                             | 0.5                             |
| Tools, implements, cutlery, spoons and<br>forks, of base metal; parts thereof.....             | 82                         | 0.443   | 122.0        | 121.7        | -3.3                            | 0.1                              | -0.1                             | -0.2                            | -0.2                            |
| Miscellaneous articles of base metal.....  | 83                         | 0.521   | 135.2        | 135.0        | -2.0                            | 0.0                              | 0.0                              | -1.0                            | -0.1                            |
| <b>Machinery, electrical equipment, TV image<br/>and sound recorders, parts, etc.....</b>      | XVI                        | 30.442  | 80.5         | 80.4         | -1.6                            | 0.1                              | 0.0                              | -0.2                            | -0.1                            |
| Machinery and mechanical appliances;<br>parts thereof.....                                     | 84                         | 15.449  | 85.4         | 85.2         | -1.7                            | 0.2                              | -0.2                             | -0.2                            | -0.2                            |
| Electrical machinery and equip, sound and<br>TV recorders & reproducers, parts.....            | 85                         | 14.993  | 75.8         | 75.8         | -1.3                            | 0.0                              | 0.4                              | -0.4                            | 0.0                             |
| <b>Vehicles, aircraft, vessels and associated<br/>transport equipment.....</b>                 | XVII                       | 14.383  | 114.2        | 114.0        | -0.1                            | 0.0                              | 0.4                              | -0.1                            | -0.2                            |
| Motor vehicles and their parts.....  | 87                         | 12.891  | 112.9        | 112.6        | -0.1                            | 0.1                              | 0.4                              | -0.1                            | -0.3                            |
| Aircraft, spacecraft, and parts thereof (Dec.<br>2002=100).....                                | 88                         | 1.416   | 118.9        | 118.9        | -0.8                            | 0.0                              | 0.1                              | 0.0                             | 0.0                             |
| <b>Optical, photo, measuring, medical &amp;<br/>musical instruments; &amp; timepieces.....</b> | XVIII                      | 3.996   | 102.8        | 102.7        | -0.2                            | -0.1                             | -0.3                             | -0.3                            | -0.1                            |
| Optical, photographic, measuring and<br>medical instruments.....                               | 90                         | 3.665   | 99.6         | 99.4         | -0.4                            | -0.1                             | -0.3                             | -0.3                            | -0.2                            |
| Clocks and watches and parts thereof.....  | 91                         | 0.267   | 141.6        | 141.5        | 1.1                             | 0.6                              | -0.1                             | -0.4                            | -0.1                            |
| <b>Miscellaneous manufactured articles.....</b>  | XX                         | 4.181   | 111.7        | 111.6        | -0.5                            | -0.1                             | -0.1                             | 0.0                             | -0.1                            |
| Furniture & stuffed furnishings; lamps &<br>lighting fittings, nesoi; prefab bldgs.....        | 94                         | 2.562   | 116.4        | 116.3        | -0.3                            | 0.1                              | 0.1                              | -0.2                            | -0.1                            |
| Toys, games and sports equipment; parts<br>and accessories thereof.....                        | 95                         | 1.347   | 103.3        | 103.4        | -0.5                            | -0.1                             | 0.0                              | 0.0                             | 0.1                             |
| Miscellaneous manufactured articles.....   | 96                         | 0.272   | 131.8        | 131.7        | -1.6                            | -0.6                             | -1.7                             | 0.0                             | -0.1                            |

<sup>1</sup> Relative importance figures are based on 2014 trade values.

NOTES: Data may be revised in each of the 3 months after original publication.

Dash = Not available

**Table 6. U.S. export price indexes and percent changes for selected categories of goods: December 2015 to December 2016**

[2000=100, unless otherwise noted]

| Description  | Harmoni-<br>zied<br>system | Relative<br>importance<br>Nov.<br>2016 <sup>1</sup> | Index        |              | Percent change                  |                                  |                                  |                                 |                                 |
|--|----------------------------|---|--------------|--------------|---------------------------------|----------------------------------|----------------------------------|---------------------------------|---------------------------------|
|  |                            |   | Nov.<br>2016 | Dec.<br>2016 | Annual                          | Monthly                          |                                  |                                 |                                 |
|  |                            |   |              |              | Dec.<br>2015 to<br>Dec.<br>2016 | Aug.<br>2016 to<br>Sept.<br>2016 | Sept.<br>2016 to<br>Oct.<br>2016 | Oct.<br>2016 to<br>Nov.<br>2016 | Nov.<br>2016 to<br>Dec.<br>2016 |
| <b>Live animals; animal products.....</b>  | I                          | 1.779   | 192.1        | 193.0        | 6.0                             | 1.5                              | 0.4                              | 0.1                             | 0.5                             |
| Meat & edible meat offal (Dec. 2006=100)...  | 02                         | 1.026   | 147.8        | 149.6        | 7.6                             | -0.9                             | 0.3                              | 0.6                             | 1.2                             |
| <b>Vegetable products.....</b>   | II                         | 4.298   | 194.1        | 191.9        | -2.3                            | -1.7                             | 1.3                              | 2.1                             | -1.1                            |
| Edible fruit and nuts; peel of citrus fruit or<br>melons.....                            | 08                         | 0.912   | 151.6        | 145.8        | -14.3                           | -2.1                             | 7.0                              | -0.2                            | -3.8                            |
| Cereals.....   | 10                         | 1.202   | 170.9        | 167.8        | -9.5                            | -3.7                             | 2.8                              | 1.2                             | -1.8                            |
| Oilseeds and misc. grains, seeds, fruits,<br>plants, straw and fodder.....               | 12                         | 1.613   | 199.8        | 207.1        | 9.7                             | -2.0                             | -2.8                             | 0.4                             | 3.7                             |
| <b>Prepared foodstuffs, beverages, and<br/>tobacco.....</b>                              | IV                         | 2.937   | 147.9        | 147.6        | -0.6                            | -1.0                             | -0.4                             | -0.4                            | -0.2                            |
| Preparations of vegetables, fruit, nuts or<br>other parts of plants (Dec. 2009=100)....  | 20                         | 0.370   | 116.7        | 116.8        | -1.8                            | 0.0                              | -0.9                             | 0.2                             | 0.1                             |
| Beverages, spirits, and vinegar (Dec.<br>2008=100).....                                  | 22                         | 0.554   | 112.4        | 112.3        | 5.8                             | 0.4                              | 1.1                              | 0.5                             | -0.1                            |
| Residues and waste from the food<br>industries; prepared animal feed.....                | 23                         | 0.659   | 200.0        | 203.0        | 2.0                             | -3.4                             | -1.0                             | -2.8                            | 1.5                             |
| <b>Mineral products.....</b>   | V                          | 7.196   | 177.5        | 195.8        | 26.6                            | 6.0                              | 4.5                              | -1.2                            | 10.3                            |
| Ores, slag and ash (Dec. 2012=100).....  | 26                         | 0.542   | 85.8         | 89.8         | 27.7                            | 3.4                              | 0.5                              | 5.1                             | 4.7                             |
| Mineral fuels, oils and residuals, bituminous<br>substances and mineral waxes.....       | 27                         | 6.453   | 169.0        | 187.7        | 27.4                            | 6.4                              | 5.0                              | -1.8                            | 11.1                            |
| <b>Products of the chemical or allied<br/>industries.....</b>                            | VI                         | 10.723  | 136.1        | 136.2        | -1.7                            | 0.0                              | -0.1                             | 0.1                             | 0.1                             |
| Inorganic chemicals.....   | 28                         | 0.921   | 176.1        | 179.1        | -2.6                            | -0.9                             | 1.3                              | 0.6                             | 1.7                             |
| Organic chemicals.....   | 29                         | 2.477   | 134.1        | 133.7        | -0.7                            | 0.2                              | 0.3                              | 0.9                             | -0.3                            |
| Pharmaceutical products.....   | 30                         | 2.937   | 108.1        | 106.9        | -2.1                            | 0.4                              | -0.2                             | -0.6                            | -1.1                            |
| Tanning or dyeing extracts, dyes, paints<br>varnish, putty, & inks (Dec. 2015=100)....   | 32                         | 0.537   | 97.5         | 97.9         | -2.1                            | -0.2                             | -0.2                             | 0.0                             | 0.4                             |
| Essential oils and resinoids; perfumery<br>cosmetic or toilet preparations.....          | 33                         | 0.808   | 131.1        | 131.0        | -3.3                            | 0.0                              | -2.6                             | 0.0                             | -0.1                            |
| Soap; lubricants; waxes, polishing or<br>scouring products; candles, pastes.....         | 34                         | 0.514   | 116.2        | 116.0        | 3.3                             | 0.1                              | 0.4                              | -0.1                            | -0.2                            |
| Miscellaneous chemical products.....   | 38                         | 1.848   | 147.1        | 149.9        | 0.9                             | -0.3                             | -0.2                             | 0.6                             | 1.9                             |
| <b>Plastics and articles thereof; rubber and<br/>articles thereof.....</b>               | VII                        | 5.109   | 137.2        | 136.8        | 0.2                             | 0.4                              | 0.1                              | 0.3                             | -0.3                            |
| Plastics and articles thereof.....   | 39                         | 4.127   | 132.7        | 132.4        | 0.2                             | 0.2                              | 0.5                              | 0.2                             | -0.2                            |
| Rubber and articles thereof.....   | 40                         | 0.982   | 156.4        | 155.5        | 0.3                             | 0.6                              | -1.1                             | 1.1                             | -0.6                            |
| <b>Raw hides, skins, leather, furskins, travel<br/>goods, etc.....</b>                   | VIII                       | 0.332   | 121.1        | 121.2        | 0.5                             | 0.7                              | 0.3                              | 0.6                             | 0.1                             |
| Raw hides and skins other than furskins<br>and leather (Dec.2014=100).....               | 41                         | 0.198   | 70.5         | 70.5         | 2.3                             | 0.3                              | 0.7                              | 1.4                             | 0.0                             |
| <b>Wood, wood charcoal, cork, straw, baskets<br/>and wickerwork (Dec. 2014=100).....</b> | IX                         | 0.638   | 93.9         | 95.3         | -1.0                            | 0.9                              | -1.5                             | -1.3                            | 1.5                             |
| <b>Woodpulp, recovered paper, and paper<br/>products.....</b>                            | X                          | 2.145   | 123.0        | 124.0        | 1.7                             | -0.9                             | -0.2                             | 0.3                             | 0.8                             |
| Woodpulp and recovered paper.....  | 47                         | 0.647   | 130.8        | 134.8        | 11.1                            | -3.0                             | -0.5                             | 1.2                             | 3.1                             |
| Paper and paperboard; articles of paper<br>pulp, paper or paperboard.....                | 48                         | 1.117   | 118.5        | 118.3        | -2.7                            | 0.1                              | -0.3                             | -0.1                            | -0.2                            |
| Printed material (Dec. 2014=100).....  | 49                         | 0.381   | 100.6        | 100.6        | 0.2                             | 0.0                              | 0.2                              | 0.0                             | 0.0                             |
| <b>Textile and textile articles.....</b>   | XI                         | 1.702   | 119.4        | 119.7        | -0.8                            | 0.2                              | -0.3                             | -0.2                            | 0.3                             |
| Cotton, including yarns and woven fabrics<br>thereof.....                                | 52                         | 0.410   | 122.5        | 122.1        | 4.7                             | 0.7                              | 0.2                              | 0.2                             | -0.3                            |

See footnotes at end of table.

**Table 6. U.S. export price indexes and percent changes for selected categories of goods: December 2015 to December 2016 — Continued**  
 [2000=100, unless otherwise noted]

| Description  | Harmoni-<br>zied<br>system | Relative<br>importance<br>Nov.<br>2016 <sup>1</sup> | Index        |              | Percent change                  |                                  |                                  |                                 |                                 |
|--|----------------------------|---|--------------|--------------|---------------------------------|----------------------------------|----------------------------------|---------------------------------|---------------------------------|
|  |                            |   | Nov.<br>2016 | Dec.<br>2016 | Annual                          | Monthly                          |                                  |                                 |                                 |
|  |                            |   |              |              | Dec.<br>2015 to<br>Dec.<br>2016 | Aug.<br>2016 to<br>Sept.<br>2016 | Sept.<br>2016 to<br>Oct.<br>2016 | Oct.<br>2016 to<br>Nov.<br>2016 | Nov.<br>2016 to<br>Dec.<br>2016 |
| <b>Stone, plaster, cement, asbestos,<br/>ceramics, glass etc.....</b>                          | XIII                       | 0.868   | 123.1        | 122.9        | 0.2                             | 0.0                              | -0.1                             | 0.1                             | -0.2                            |
| Articles of stone, plaster, cement, asbestos,<br>or mica (Dec. 2015=100).....                  | 68                         | 0.295   | 101.3        | 101.3        | 1.3                             | 0.0                              | 0.0                              | 0.1                             | 0.0                             |
| Glass and glassware.....   | 70                         | 0.439   | 99.8         | 99.6         | 0.3                             | 0.0                              | 0.0                              | 0.1                             | -0.2                            |
| <b>Pearls, stones, precious metals, imitation<br/>jewelry, and coins.....</b>                  | XIV                        | 4.466   | 235.9        | 223.6        | 2.5                             | -0.3                             | -2.1                             | 0.2                             | -5.2                            |
| <b>Base metals and articles of base metals. ...</b>  | XV                         | 4.992   | 144.4        | 147.3        | 3.9                             | -0.2                             | -0.1                             | 1.2                             | 2.0                             |
| Iron and steel.....  | 72                         | 1.013   | 143.6        | 151.6        | 10.1                            | -0.4                             | -1.4                             | 2.1                             | 5.6                             |
| Copper and articles thereof.....   | 74                         | 0.435   | 156.8        | 171.6        | 13.6                            | -3.0                             | 1.9                              | 2.8                             | 9.4                             |
| Aluminum and articles thereof.....   | 76                         | 0.787   | 106.3        | 106.8        | 3.1                             | 0.0                              | -0.1                             | 3.1                             | 0.5                             |
| Tools, implements, cutlery, spoons and<br>forks, of base metal (Dec. 2015=100). ....           | 82                         | 0.391   | 100.0        | 100.0        | 0.0                             | 0.0                              | 0.0                              | 0.0                             | 0.0                             |
| Miscellaneous articles of base metal.....  | 83                         | 0.354   | 147.8        | 147.7        | -0.4                            | 0.1                              | 0.0                              | 0.0                             | -0.1                            |
| <b>Machinery, electrical equipment, TV image<br/>and sound recorders, parts, etc.....</b>      | XVI                        | 29.530  | 95.2         | 95.2         | -1.0                            | -0.1                             | -0.2                             | 0.0                             | 0.0                             |
| Machinery and mechanical appliances;<br>parts thereof.....                                     | 84                         | 17.668  | 112.1        | 112.1        | -0.6                            | -0.1                             | -0.1                             | -0.1                            | 0.0                             |
| Electrical machinery and equipment and<br>parts and accessories thereof.....                   | 85                         | 11.862  | 77.0         | 76.9         | -1.5                            | -0.1                             | -0.4                             | 0.1                             | -0.1                            |
| <b>Vehicles, aircraft, vessels and associated<br/>transport equipment.....</b>                 | XVII                       | 15.160  | 131.8        | 131.7        | 0.6                             | 0.1                              | 0.3                              | -0.1                            | -0.1                            |
| Motor vehicles and their parts.....  | 87                         | 9.195   | 114.7        | 114.5        | -0.3                            | 0.1                              | 0.3                              | -0.1                            | -0.2                            |
| <b>Optical, photo, measuring, medical &amp;<br/>musical instruments; &amp; timepieces.....</b> | XVIII                      | 6.173   | 106.0        | 105.6        | -1.3                            | 0.0                              | 0.1                              | -0.1                            | -0.4                            |
| <b>Miscellaneous manufactured articles.....</b>  | XX                         | 1.558   | 112.5        | 112.4        | 1.2                             | 0.1                              | 0.1                              | 0.0                             | -0.1                            |
| Furniture; stuffed furnishings; lamps and<br>lighting fittings nesoi;.....                     | 94                         | 0.938   | 128.6        | 128.3        | 3.3                             | 0.2                              | 0.1                              | 0.0                             | -0.2                            |
| Toys, games and sports equipment; parts<br>and accessories thereof.....                        | 95                         | 0.471   | 89.3         | 89.3         | -0.9                            | 0.0                              | 0.0                              | 0.1                             | 0.0                             |

<sup>1</sup> Relative importance figures are based on 2014 trade values.

NOTES: Data may be revised in each of the 3 months after original publication.

Dash = Not available

**Table 7. U.S. import price indexes and percent changes by locality of origin: December 2015 to December 2016**  
 [2000=100, unless otherwise noted]

| Description   | Relative importance<br>Nov.<br>2016 <sup>1</sup> | Index        |              | Percent change               |                               |                               |                              |                              |
|---|--|--------------|--------------|------------------------------|-------------------------------|-------------------------------|------------------------------|------------------------------|
|   |  | Nov.<br>2016 | Dec.<br>2016 | Annual                       | Monthly                       |                               |                              |                              |
|   |  |              |              | Dec. 2015<br>to Dec.<br>2016 | Aug. 2016<br>to Sept.<br>2016 | Sept. 2016<br>to Oct.<br>2016 | Oct. 2016<br>to Nov.<br>2016 | Nov. 2016<br>to Dec.<br>2016 |
| <b>Industrialized Countries<sup>2</sup></b> .....       | 100.000  | 117.3        | 118.0        | 2.2                          | 0.1                           | 0.4                           | -0.2                         | 0.6                          |
| Nonmanufacturing.....                                   | 7.560  | 122.8        | 133.3        | 24.6                         | -0.7                          | 7.5                           | -3.9                         | 8.6                          |
| Manufacturing.....                                      | 92.005   | 116.4        | 116.3        | 0.4                          | 0.2                           | -0.1                          | 0.1                          | -0.1                         |
| <b>Other Countries<sup>3</sup></b> .....                | 100.000  | 118.2        | 119.5        | 1.8                          | 0.2                           | 0.5                           | -0.2                         | 1.1                          |
| Nonmanufacturing.....                                   | 9.011  | 180.5        | 196.7        | 25.8                         | 0.9                           | 4.3                           | -0.3                         | 9.0                          |
| Manufacturing.....                                      | 90.741   | 102.7        | 102.9        | -0.4                         | 0.0                           | 0.2                           | -0.1                         | 0.2                          |
| <b>Canada</b> .....                                     | 100.000  | 119.7        | 122.4        | 7.1                          | 0.1                           | 1.7                           | -0.7                         | 2.3                          |
| Nonmanufacturing.....                                   | 21.604   | 117.4        | 127.9        | 26.0                         | -1.0                          | 8.1                           | -3.8                         | 8.9                          |
| Manufacturing.....                                      | 77.645   | 124.3        | 124.7        | 2.2                          | 0.4                           | 0.2                           | 0.1                          | 0.3                          |
| <b>European Union<sup>4</sup></b> .....                 | 100.000  | 131.4        | 131.2        | -0.6                         | 0.1                           | 0.2                           | -0.1                         | -0.2                         |
| Manufacturing.....                                      | 99.524   | 128.1        | 127.9        | -0.6                         | 0.2                           | 0.2                           | 0.0                          | -0.2                         |
| <b>France (Dec. 2003=100)</b> .....                     | 100.000  | 122.0        | 121.9        | 0.7                          | -0.3                          | 0.0                           | 0.0                          | -0.1                         |
| <b>Germany (Dec. 2003=100)</b> .....                    | 100.000  | 112.1        | 111.7        | -4.0                         | 0.2                           | -0.6                          | -0.1                         | -0.4                         |
| <b>United Kingdom (Dec. 2003=100)</b> .....             | 100.000  | 117.6        | 117.5        | -1.7                         | -0.5                          | -0.2                          | -0.3                         | -0.1                         |
| <b>Latin America<sup>5</sup></b> .....                  | 100.000  | 140.6        | 143.9        | 4.4                          | 0.0                           | 0.6                           | 0.2                          | 2.3                          |
| Nonmanufacturing.....                                   | 17.168   | 205.7        | 224.1        | 27.9                         | 1.9                           | 3.9                           | 0.0                          | 8.9                          |
| Manufacturing.....                                      | 82.346   | 119.4        | 120.7        | 0.3                          | -0.3                          | 0.0                           | 0.2                          | 1.1                          |
| <b>Mexico (Dec. 2003=100)</b> .....                     | 100.000  | 126.2        | 126.6        | 0.6                          | 0.0                           | 0.0                           | 0.2                          | 0.3                          |
| Nonmanufacturing (Dec. 2008=100).....                   | 9.320  | 118.0        | 119.7        | 23.8                         | 0.5                           | -0.1                          | 3.7                          | 1.4                          |
| Manufacturing (Dec. 2008=100).....                      | 90.220   | 88.0         | 88.2         | -1.3                         | 0.0                           | 0.0                           | -0.1                         | 0.2                          |
| <b>Pacific Rim (Dec. 2003=100)<sup>6</sup></b> .....    | 100.000  | 98.4         | 98.3         | -1.0                         | 0.1                           | 0.0                           | -0.2                         | -0.1                         |
| <b>China (Dec. 2003=100)</b> .....                      | 100.000  | 100.2        | 100.2        | -1.7                         | -0.1                          | -0.1                          | -0.4                         | 0.0                          |
| <b>Japan</b> .....                                      | 100.000  | 96.5         | 96.5         | 1.5                          | 0.1                           | 0.2                           | 0.2                          | 0.0                          |
| <b>Asian NICs<sup>7</sup></b> .....                     | 100.000  | 84.3         | 84.4         | -0.8                         | 0.4                           | -0.1                          | 0.0                          | 0.1                          |
| <b>ASEAN (Dec. 2003=100)<sup>8</sup></b> .....          | 100.000  | 97.1         | 97.4         | -0.3                         | 0.3                           | 0.1                           | 0.0                          | 0.3                          |
| <b>Asia Near East (Dec. 2003=100)<sup>9</sup></b> ..... | 100.000  | 148.6        | 158.5        | 16.2                         | -0.4                          | 3.3                           | 0.3                          | 6.7                          |

<sup>1</sup> Relative importance figures are based on 2014 trade values.

<sup>2</sup> Western Europe, Canada, Japan, Australia, New Zealand and South Africa.

<sup>3</sup> Eastern Europe, Latin America, OPEC countries, and other countries in Asia, Africa and the Western Hemisphere.

<sup>4</sup> European Union countries.

<sup>5</sup> Mexico, Central America, South America and the Caribbean.

<sup>6</sup> China, Japan, Australia, Brunei, Indonesia, Macao, Malaysia, New Zealand, Papua New Guinea, Philippines and the Asian Newly Industrialized Countries.

<sup>7</sup> Asian Newly Industrialized Countries - Hong Kong, Singapore, South Korea and Taiwan.

<sup>8</sup> Association of Southeast Asian Nations - Brunei, Cambodia, Indonesia, Laos, Malaysia, Myanmar, Philippines, Singapore, Thailand and Vietnam.

<sup>9</sup> Bahrain, Iran, Iraq, Israel, Jordan, Kuwait, Lebanon, Oman, Qatar, Saudi Arabia, Syria, United Arab Emirates and Yemen.

NOTES: Data may be revised in each of the 3 months after original publication.

Regions are not mutually exclusive.

Dash = Not available

**Table 8. U.S. international price indexes and percent changes for selected transportation services: December 2015 to December 2016**

[2000=100, unless otherwise noted]

| Description                             | Relative importance Nov. 2016 <sup>1</sup> | Index     |           | Percent change                |                         |                         |                        |                        |
|---|--|-----------|-----------|-------------------------------|-------------------------|-------------------------|------------------------|------------------------|
|   |  | Nov. 2016 | Dec. 2016 | Annual Dec. 2015 to Dec. 2016 | Monthly                 |                         |                        |                        |
|   |  |           |           |                               | Aug. 2016 to Sept. 2016 | Sept. 2016 to Oct. 2016 | Oct. 2016 to Nov. 2016 | Nov. 2016 to Dec. 2016 |
| <b>Air Freight</b>                      |  |           |           |                               |                         |                         |                        |                        |
| <b>Import Air Freight</b> .....         | 100.000                                    | 161.8     | 160.6     | -0.9                          | 1.1                     | 6.2                     | -0.3                   | -0.7                   |
| Europe (Dec. 2003=100).....             | 22.529                                     | 139.0     | 136.8     | -2.6                          | 1.8                     | 0.2                     | 0.3                    | -1.6                   |
| Asia.....                               | 64.358                                     | 148.1     | 147.3     | -0.6                          | 1.0                     | 9.9                     | -0.6                   | -0.5                   |
| <b>Export Air Freight</b> .....         | 100.000                                    | 154.6     | 154.9     | -1.0                          | -0.3                    | 1.0                     | 0.0                    | 0.2                    |
| Europe (Dec. 2006=100).....             | 37.554                                     | 145.5     | 145.9     | -2.6                          | 0.0                     | 0.0                     | 0.0                    | 0.3                    |
| <b>Inbound Air Freight</b> .....        | 100.000                                    | 152.6     | 153.9     | 0.9                           | 0.8                     | 4.5                     | 0.3                    | 0.9                    |
| Europe (Dec. 2003=100).....             | 27.096                                     | 135.0     | 133.1     | -1.4                          | 0.8                     | -0.4                    | 0.1                    | -1.4                   |
| Asia.....                               | 59.124                                     | 139.4     | 142.4     | 2.6                           | 1.0                     | 8.0                     | 0.4                    | 2.2                    |
| <b>Outbound Air Freight</b> .....       | 100.000                                    | 136.4     | 136.5     | -5.4                          | 0.1                     | 0.1                     | -0.5                   | 0.1                    |
| Europe (Dec. 2003=100).....             | 33.289                                     | 143.3     | 143.3     | -9.2                          | 1.0                     | 0.0                     | -0.1                   | 0.0                    |
| Asia.....                               | 43.172                                     | 128.6     | 128.7     | -4.1                          | -0.2                    | 0.4                     | -0.1                   | 0.1                    |
| <b>Air Passenger Fares</b>              |  |           |           |                               |                         |                         |                        |                        |
| <b>Import Air Passenger Fares</b> ..... | 100.000                                    | 183.9     | 186.2     | -4.2                          | 4.2                     | 6.3                     | -2.7                   | 1.3                    |
| Europe.....                             | 45.335                                     | 218.0     | 196.5     | -4.4                          | 10.0                    | 6.9                     | -1.2                   | -9.9                   |
| Asia.....                               | 21.377                                     | 124.7     | 146.4     | -8.4                          | -5.6                    | 4.8                     | -5.0                   | 17.4                   |
| Latin America/Caribbean.....            | 9.786                                      | 161.8     | 175.3     | 2.8                           | -5.7                    | 4.2                     | 4.7                    | 8.3                    |
| <b>Export Air Passenger Fares</b> ..... | 100.000                                    | 156.2     | 168.3     | 4.6                           | -11.1                   | 2.5                     | 4.1                    | 7.7                    |
| Europe.....                             | 30.516                                     | 203.8     | 217.8     | 9.3                           | 0.5                     | 2.6                     | 2.4                    | 6.9                    |
| Asia.....                               | 28.031                                     | 134.7     | 141.2     | 1.3                           | -24.7                   | 1.2                     | 6.5                    | 4.8                    |
| Latin America/Caribbean.....            | 23.312                                     | 162.9     | 171.1     | 5.0                           | -5.8                    | 6.9                     | -1.0                   | 5.0                    |

<sup>1</sup> Relative importance figures are based on 2014 trade values.

NOTES: Data may be revised in each of the 3 months after original publication.

Dash = Not available

## TECHNICAL NOTE

**Import and Export Merchandise and Services Price Indexes** - All indexes use a modified Laspeyres formula and are not seasonally adjusted. Price indexes are reweighted annually, with a 2-year lag in the weights. Published series use a base year of 2000=100 where possible. More detailed index series and additional information may be obtained at [www.bls.gov/mxp](http://www.bls.gov/mxp) or by calling (202) 691-7101.

**Merchandise Goods Classification Systems** - The merchandise price indexes are published using three classification systems. Items are classified by end use according to the Bureau of Economic Analysis Classification System, by industry according to the North American Industry Classification System (NAICS), and by product category according to the Harmonized System (HS). While classification by end use and product category are self-explanatory, some notes are in order for classifying items by industry. In the NAICS imports and exports tables, items are classified by output industry, not input industry. As an example, NAICS import index 326 (plastics and rubber products manufacturing) include outputs such as manufactured plastic rather than inputs such as petroleum. The NAICS classification structure also matches the classification system used by the Producer Price Index (PPI) to produce the NAICS primary products indexes.

**Import Price Indexes** - Products have been classified by the Harmonized Tariff Schedule of the United States Annotated (TSUSA). Import prices are based on U.S. dollar prices paid by the U.S. importer. The prices are generally either "free on board" (f.o.b.) foreign port or "cost, insurance, and freight" (c.i.f.) U.S. port transaction prices, depending on the practices of the individual industry. The index for crude petroleum is calculated from data collected by the U.S. Department of Energy.

**Export Price Indexes** - Products have been classified by the Harmonized Schedule B classification system of the U.S. Bureau of the Census. The prices used are generally either "free alongside ship" (f.a.s.) factory or "free on board" (f.o.b.) transaction prices, depending on the practices of the individual industry. Prices used in the grain index, excluding rice, are obtained from the U.S. Department of Agriculture.

**Services Price Indexes** - Starting in September 2008, the import air passenger fares indexes represent changes in the average revenue per passenger received by foreign carriers from U.S. residents and are calculated from data obtained from an airline consulting service. These data include tickets sold by travel agencies and travel websites. Tickets sold directly by the airlines are excluded, as are frequent flyer tickets generally. Starting in January 2008, the export air passenger fares indexes represent changes in the average revenue per passenger received by U.S. carriers from foreign residents and are calculated from data collected directly from airlines. These data include frequent flyer tickets and those sold by consolidators. Taxes and fees are included in the import air passenger fares indexes and excluded from the export air passenger fares indexes. The air freight indexes are calculated from data collected directly from airlines. These data exclude mail and passenger baggage. The scope of the service being priced is the movement of freight from airport to airport only, and does not include any ground transportation or port service. The air freight indexes are presented using two definitions: balance of payments (which represent transactions between U.S. and foreign residents) and international (which represent transactions inbound to and outbound from the U.S.). Fact sheets specifying detailed information for each services industry are available at [www.bls.gov/mxp](http://www.bls.gov/mxp) under "MXP Publications."

**Import Indexes by Locality of Origin** - Prices used in these indexes are a subset of the data collected for the import price indexes. Beginning with January 2002, the indexes are defined by locality of origin using a nomenclature based upon the North American Industry Classification System (NAICS). Nonmanufactured goods are defined as NAICS 11 and 21, and manufactured goods are defined as NAICS 31-33.

**Revision Policy** - To reflect the availability of late reports and corrections by respondents, monthly data may be revised in each of the 3 months after original publication. After 3 months, no further data revisions take place. For example, data first published in the January release will be subject to revision in the releases for February, March, and April.

**Uses of the Data** - The primary use of the indexes is to deflate trade statistics, notably the foreign trade sector of the National Income and Product Accounts (NIPA) constructed by the Department of Commerce. Other published indexes are useful for general market analysis. For trade in international services, balance of payments indexes are used for deflating NIPA, while international indexes are more appropriate for market analysis. Merchandise and services indexes also can be used to study U.S. competitiveness and to compute price elasticities, and the merchandise import indexes by country or region of origin are useful in terms of trade analysis.

**Email Subscription** - The U.S. import and export price indexes news release is available through an email subscription service at [www.bls.gov/bls/list.htm](http://www.bls.gov/bls/list.htm).

**Additional Information** - More detailed data are available on the Import/Export Price Indexes home page at [www.bls.gov/mxp](http://www.bls.gov/mxp). For import and export price indexes data requests, send an email to [mxpinfo@bls.gov](mailto:mxpinfo@bls.gov).

Information from this release will be made available to sensory impaired individuals upon request.  
Voice phone: (202)-691-5200; Federal Relay Service: 1-(800)-877-8339.