

Transmission of material in this release is embargoed until  
8:30 a.m. (EDT) Tuesday, July 14, 2015

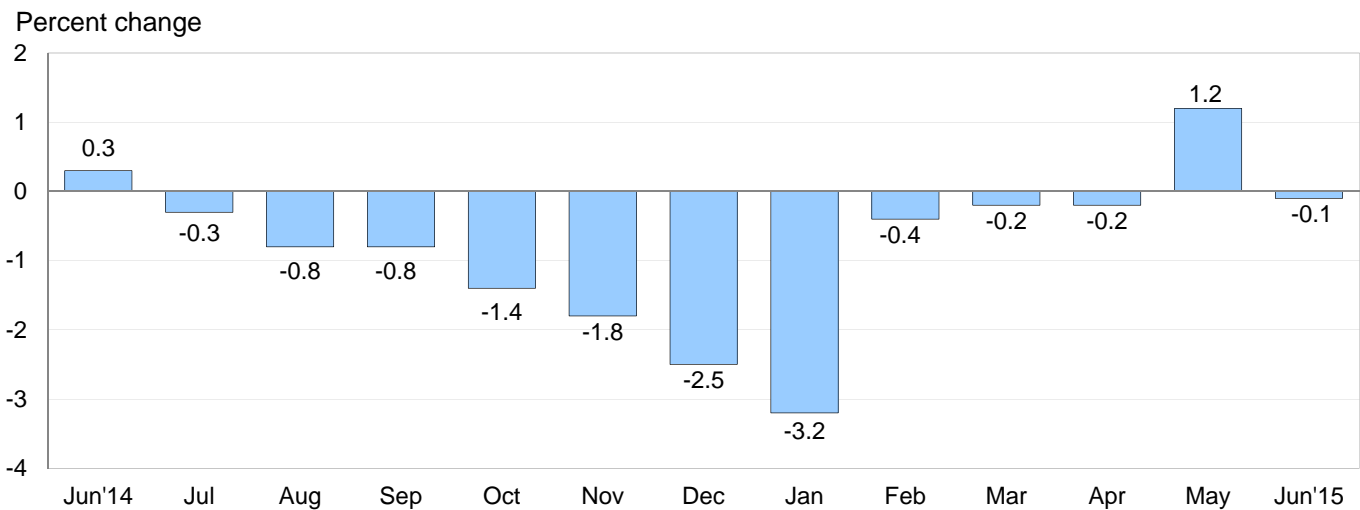
USDL-15-1350

Technical information: (202) 691-7101 • MXPinfo@bls.gov • www.bls.gov/mxp  
Media contact: (202) 691-5902 • PressOffice@bls.gov

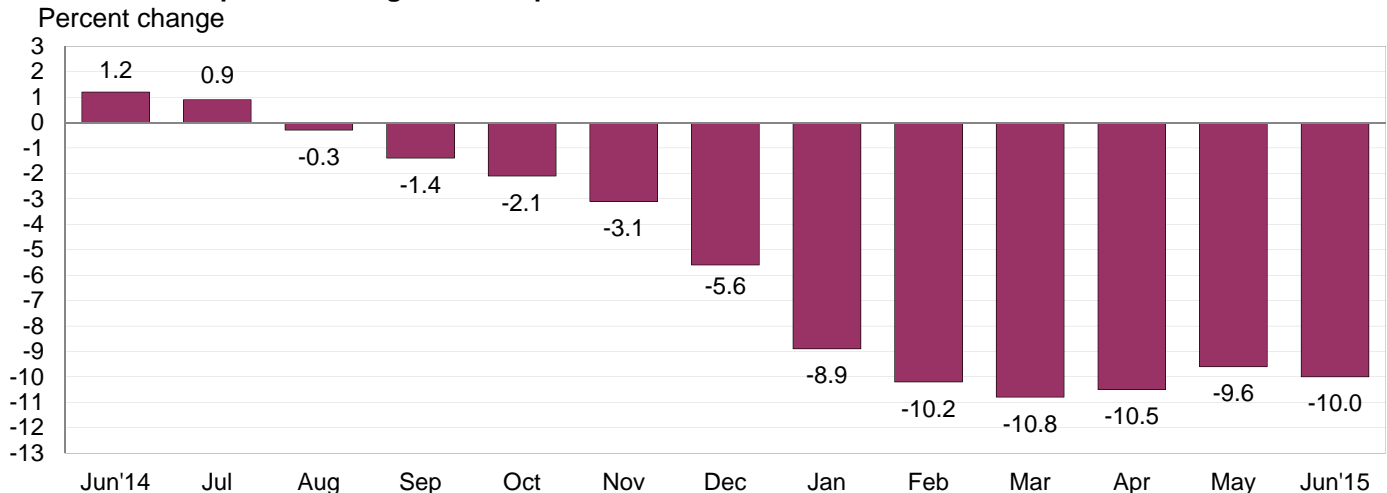
**U.S. IMPORT AND EXPORT PRICE INDEXES – JUNE 2015**

The price index for U.S. imports edged down 0.1 percent in June following a 1.2-percent increase the previous month, the U.S. Bureau of Labor Statistics reported today. The June drop was led by lower nonfuel prices, which more than offset an increase in fuel prices. U.S. export prices fell 0.2 percent in June, after rising 0.6 percent in May.

**Chart 1. One-month percent change in the Import Price Index: June 2014 – June 2015**



**Chart 2. 12-month percent change in the Import Price Index: June 2014 – June 2015**



**All Imports:** Overall import prices declined 0.1 percent in June, resuming a downward trend over the past year, after the index rose 1.2 percent in May. Prices for U.S imports also decreased over the past 12 months, falling 10.0 percent from June 2014 to June 2015. Overall import prices have not recorded a year-over-year advance since the index rose 0.9 percent for the year ended in July 2014.

**All Imports Excluding Fuel:** Nonfuel import prices led the overall decrease in import prices in June, declining 0.2 percent. Nonfuel import prices have not recorded an advance since the index ticked up 0.1 percent in July 2014. Lower prices for nonfuel industrial supplies and materials; and foods, feeds, and beverages drove the decline in nonfuel import prices in June. The price indexes for the major finished goods categories were mostly unchanged from May to June. The price index for nonfuel imports declined 2.3 percent for the year ended in June. The decrease was led by a 6.7-percent drop in nonfuel industrial supplies and materials prices, although the price indexes for capital goods; automotive vehicles; consumer goods; and foods, feeds, and beverages all declined as well.

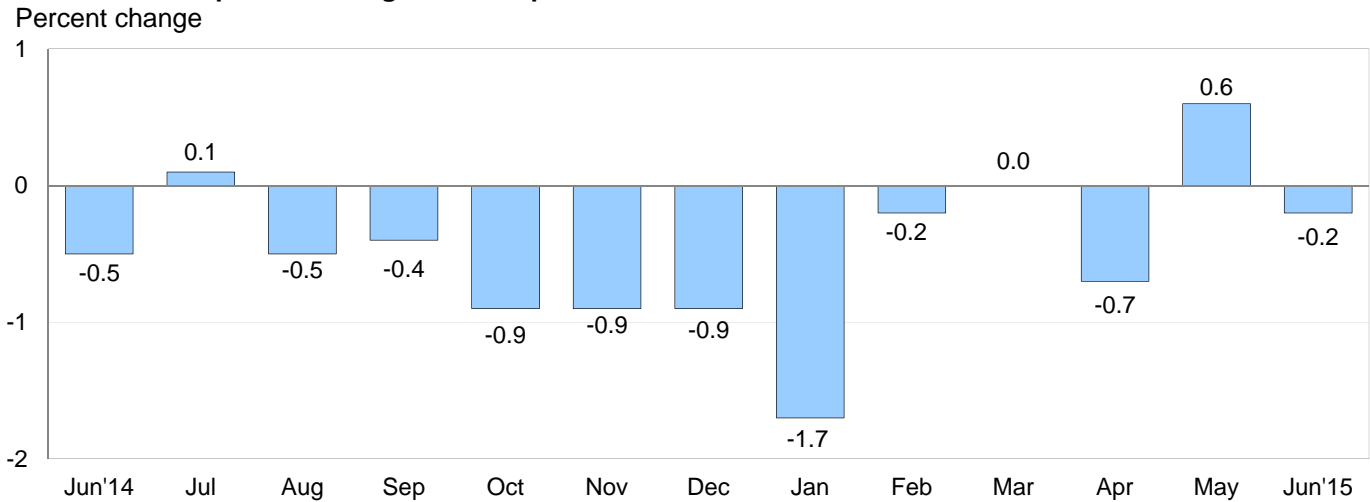
**Fuel Imports:** Import fuel prices increased 0.7 percent in June following a 10.8-percent rise the previous month. Both the price indexes for petroleum and natural gas contributed to the June advance, rising 0.8 percent and 0.3 percent, respectively. Prices for import fuel have not recorded a decline since the index fell 1.9 percent in February. Despite the recent increases, the index declined 40.7 percent for the year ended in June. Petroleum prices decreased 41.3 percent over the past year, and prices for natural gas declined 42.7 percent.

**Table A. Percent change in Import and Export Price Indexes, selected categories**

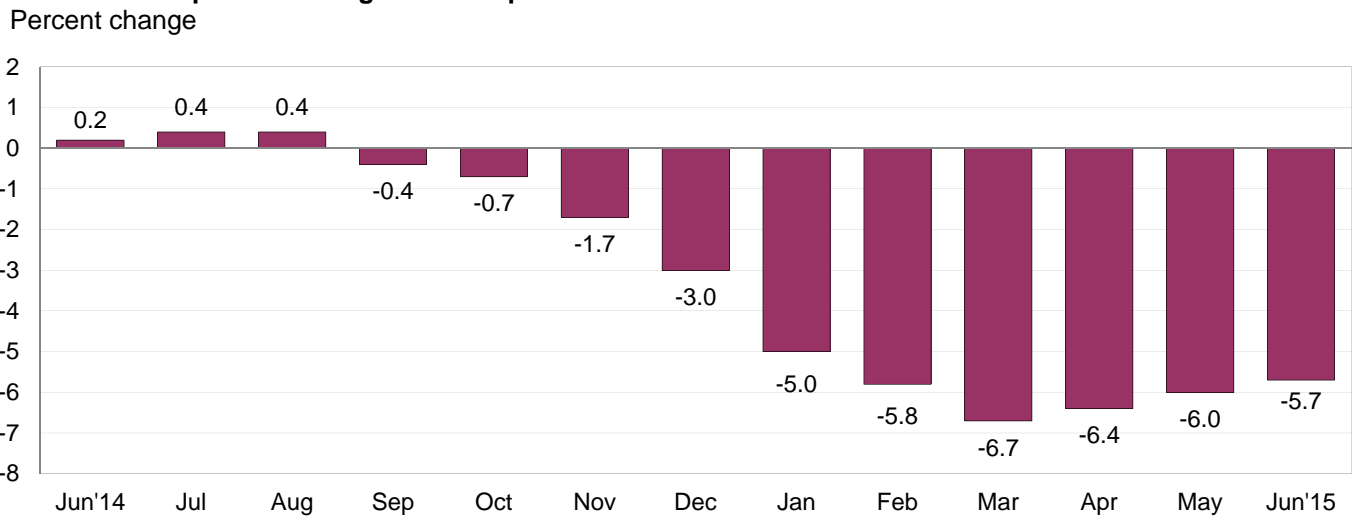
Month	IMPORTS			EXPORTS		
	All imports	Fuel imports	Nonfuel imports	All exports	Agricultural exports	Non-agricultural exports
<b>2014</b>						
June.....	0.3	1.6	-0.1	-0.5	-1.9	-0.3
July.....	-0.3	-1.5	0.1	0.1	-1.8	0.2
August.....	-0.8	-3.8	0.0	-0.5	-3.1	-0.2
September.....	-0.8	-3.6	-0.2	-0.4	-1.6	-0.2
October.....	-1.4	-6.8	-0.1	-0.9	-2.2	-0.7
November.....	-1.8	-9.3	-0.3	-0.9	0.1	-1.0
December.....	-2.5	-15.0	-0.1	-0.9	-0.7	-1.0
<b>2015</b>						
January.....	-3.2	-20.1	-0.7	-1.7	-1.4	-1.8
February.....	-0.4	-1.9	-0.2	-0.2	-2.2	0.2
March.....	-0.2	1.5 <sup>r</sup>	-0.4	0.0 <sup>r</sup>	-1.6 <sup>r</sup>	0.2
April.....	-0.2	1.7 <sup>r</sup>	-0.3	-0.7	-0.9	-0.7
May.....	1.2 <sup>r</sup>	10.8 <sup>r</sup>	0.0	0.6	-1.2 <sup>r</sup>	0.7
June.....	-0.1	0.7	-0.2	-0.2	-1.5	-0.1
June 2013 to 2014.....	1.2	6.2	0.0	0.2	-1.2	0.3
June 2014 to 2015.....	-10.0	-40.7	-2.3	-5.7	-16.7	-4.5

r Revised

**Chart 3. One-month percent change in the Export Price Index: June 2014 – June 2015**



**Chart 4. 12-month percent change in the Export Price Index: June 2014 – June 2015**



**All Exports:** The price index for U.S. exports declined 0.2 percent in June, after rising 0.6 percent the previous month, which was the largest advance since the index rose 0.9 percent in March 2014. Falling agricultural prices drove the June decline, although nonagricultural prices also decreased. Export prices declined 5.7 percent over the past year, and have not recorded a 12-month advance since the index rose 0.4 percent for the year ended in August 2014.

**Agricultural Exports:** Export agricultural prices fell 1.5 percent in June following a 1.2-percent drop in May. The June decline was led by a 4.1-percent decrease in soybean prices, a 6.1-percent decline in fruit prices, and a 1.8-percent drop in meat prices. Those decreases more than offset a 4.5-percent advance in wheat prices. Agricultural prices have not recorded a 1-month rise since the index ticked up 0.1 percent in November 2014, and fell 16.7 percent over the past 12 months.

**All Exports Excluding Agriculture:** Prices for nonagricultural exports edged down 0.1 percent in June, after a 0.7-percent advance the previous month. In June, lower nonagricultural industrial supplies and materials prices more than offset higher prices for consumer goods and automotive vehicles. The price index for nonagricultural exports declined 4.5 percent over the past year, driven by lower prices for nonagricultural industrial supplies and materials and consumer goods.

## SELECTED JUNE HIGHLIGHTS

### Import Prices

**Imports by Locality of Origin:** Import prices from China fell 0.1 percent in June, after a 0.3-percent drop in May. Prices for imports from China have not recorded a monthly advance since a 0.1-percent increase in December 2014, and declined 1.2 percent over the past 12 months. The price index for imports from Japan also decreased in June, falling 0.4 percent. Import prices from Japan last increased on a 1-month basis in March 2014, and declined 2.9 percent for the year ended in June. In contrast, prices for imports from Canada, the European Union, and Mexico all rose in June; up 0.4 percent, 0.2 percent, and 0.1 percent, respectively.

**Nonfuel Industrial Supplies and Materials:** Prices for nonfuel industrial supplies and materials fell 0.5 percent in June, after edging down 0.1 percent in May. The June decline was led by a 1.3-percent drop in unfinished metal prices and a 0.5-percent decrease in chemical prices.

**Finished Goods:** Most of the major finished goods categories recorded little change in June. Automotive vehicles prices edged down 0.1 percent, driven by a 0.4-percent drop in automobile parts prices. The price indexes for capital goods and consumer goods recorded no change in June.

**Foods, Feeds, and Beverages:** Prices for foods, feeds, and beverages declined 0.6 percent in June following a 0.2-percent increase in May. The June decrease was led by a 2.8-percent drop in fruit prices and a 1.7-percent decline both in fish and shellfish prices and vegetable prices.

**Transportation Services:** Import air passenger fares increased 8.9 percent in June, led by a 6.4-percent advance in European fares and a 9.1-percent rise in Asian fares. The June increase in overall import passenger fares was the largest monthly rise since a 10.7-percent advance in June 2013. Despite the advance, import air passenger fares declined 1.1 percent over the past year. Import air freight prices fell in June, decreasing 0.9 percent for the month and 1.1 percent over the past year.

### Export Prices

**Nonagricultural Industrial Supplies and Materials:** The price index for nonagricultural industrial supplies and materials exports declined 0.2 percent in June following a 2.2-percent rise in May. The June decrease was driven by a 1.5-percent decline in nonferrous metal prices and a 0.6-percent drop in chemical prices.

**Finished Goods:** Finished goods prices rose overall in June. Prices for consumer goods increased 0.3 percent, the largest monthly advance since a 0.3-percent rise in July 2014. Automotive vehicles prices also rose in June, ticking up 0.1 percent. The price index for capital goods recorded no change in June.

**Transportation Services:** Export air passenger fares advanced 1.4 percent in June following a 2.8-percent rise in May. The June increase was led by an 8.4-percent advance in European fares, in contrast to May, when higher Asian fares were the largest contributor to the advance. Export air passenger fares declined 15.9 percent over the past year. Prices for export air freight advanced 0.3 percent in June, and decreased 1.6 percent over the past 12 months.

---

**Import and Export Price Index data for July 2015 are scheduled for release on Thursday, August 13, 2015 at 8:30 a.m. (EDT).**

**Table 1. U.S. import price indexes and percent changes for selected categories of goods: June 2014 to June 2015**

[2000=100, unless otherwise noted]

Description	End Use	Relative importance May 2015 <sup>1</sup>	Index		Percent change				
			May 2015	June 2015	Annual June 2014 to June 2015	Monthly			
						Feb. 2015 to Mar. 2015	Mar. 2015 to Apr. 2015	Apr. 2015 to May 2015	May 2015 to June 2015
<b>All commodities</b> .....		100.000	126.6	126.5	-10.0	-0.2	-0.2	1.2	-0.1
<b>All imports excluding food and fuels (Dec. 2010=100)</b> .....		82.106	100.1	100.0	-2.3	-0.4	-0.3	0.0	-0.1
<b>All imports excluding petroleum</b> .....		88.754	113.0	112.8	-2.6	-0.4	-0.4	0.0	-0.2
<b>All imports excluding fuels (Dec. 2001=100)</b> .....		88.018	117.1	116.9	-2.3	-0.4	-0.3	0.0	-0.2
<b>Foods, feeds, &amp; beverages</b> .....	0	5.912	176.8	175.8	-0.5	-0.7	-0.9	0.2	-0.6
Agricultural foods, feeds & beverages, excluding distilled beverages.....	00	4.613	196.2	195.4	0.9	-0.7	-0.8	0.9	-0.4
Nonagricultural foods (fish, distilled beverages).....	01	1.299	132.6	131.1	-5.0	-0.6	-1.3	-2.1	-1.1
<b>Industrial supplies &amp; materials</b> .....	1	25.365	184.8	185.0	-27.4	-0.1	0.3	4.8	0.1
Industrial supplies & materials excluding petroleum.....		14.119	148.8	148.1	-8.4	-1.6	-1.2	-0.1	-0.5
Industrial supplies & materials excluding fuels (Dec. 2001=100).....		13.383	168.9	168.1	-6.7	-1.4	-0.8	-0.1	-0.5
Industrial supplies & materials, durable....		7.909	156.1	155.3	-7.7	-1.7	-1.1	-0.4	-0.5
Industrial supplies & materials nondurable excluding petroleum.....		5.475	139.6	139.0	-9.3	-1.6	-1.3	0.1	-0.4
Fuels & lubricants.....	10	11.980	206.4	207.9	-40.7	1.5	1.7	10.8	0.7
Petroleum & petroleum products.....	100	11.244	225.9	227.7	-41.3	2.2	2.4	11.7	0.8
Crude.....	10000	8.145	229.8	233.9	-42.1	0.7	5.0	13.4	1.8
Fuels, n.e.s.-coals & gas.....	101	0.536	95.8	95.7	-35.4	-8.2	-8.8	-0.7	-0.1
Gas-natural.....	10110	0.378	78.7	78.9	-42.7	-10.7	-12.0	-0.9	0.3
Paper & paper base stocks.....	11	0.588	111.0	110.3	-2.9	-0.3	-0.4	-0.1	-0.6
Materials associated with nondurable supplies & materials.....	12	4.954	160.8	160.2	-5.7	-1.0	-0.6	0.3	-0.4
Selected building materials.....	13	1.176	135.5	136.6	-3.5	-1.1	-0.9	-1.2	0.8
Unfinished metals related to durable goods.....	14	3.312	210.0	207.2	-13.5	-3.1	-1.9	-0.4	-1.3
Finished metals related to durable goods.....	15	1.690	153.3	153.0	-3.1	-0.3	-0.2	-0.3	-0.2
Nonmetals related to durable goods.....	16	1.663	110.0	109.8	-2.0	-0.9	-0.4	0.2	-0.2
<b>Capital goods</b> .....	2	27.225	91.0	91.0	-1.7	-0.1	-0.3	-0.1	0.0
Electric generating equipment.....	20	3.315	118.2	118.2	-1.5	-0.3	-0.8	-0.1	0.0
Nonelectrical machinery.....	21	21.509	83.5	83.5	-2.0	-0.1	-0.2	-0.2	0.0
Transportation equipment excluding motor vehicles (Dec. 2001=100).....	22	2.400	136.9	136.9	0.8	-0.1	0.0	0.1	0.0
<b>Automotive vehicles, parts &amp; engines</b> .....	3	15.137	111.2	111.1	-2.0	-0.1	-0.1	0.0	-0.1
<b>Consumer goods, excluding automotives</b> .....	4	26.361	107.4	107.4	-0.9	-0.3	-0.1	0.0	0.0
Nondurables, manufactured.....	40	12.560	119.1	119.1	0.5	0.2	0.0	0.0	0.0
Durables, manufactured.....	41	12.338	95.8	95.8	-2.0	-0.2	-0.2	0.0	0.0
Nonmanufactured consumer goods.....	42	1.463	118.3	118.5	-2.3	-3.4	-0.1	0.3	0.2

<sup>1</sup> Relative importance figures are based on 2013 trade values.

NOTES: Data may be revised in each of the three months after original publication.

Dash = Not available

**Table 2. U.S. export price indexes and percent changes for selected categories of goods: June 2014 to June 2015**

[2000=100, unless otherwise noted]

Description	End Use	Relative importance May 2015 <sup>1</sup>	Index		Percent change				
			May 2015	June 2015	Annual June 2014 to June 2015	Monthly			
						Feb. 2015 to Mar. 2015	Mar. 2015 to Apr. 2015	Apr. 2015 to May 2015	May 2015 to June 2015
<b>All commodities</b> .....		100.000	125.7	125.4	-5.7	0.0	-0.7	0.6	-0.2
<b>Agricultural commodities</b> .....		8.905	187.4	184.5	-16.7	-1.6	-0.9	-1.2	-1.5
<b>All exports excluding food and fuels (Dec. 2010=100)</b> .....		83.532	100.6	100.5	-1.9	-0.2	-0.2	0.0	-0.1
<b>Nonagricultural commodities</b> .....		91.094	121.0	120.9	-4.5	0.2	-0.7	0.7	-0.1
<b>Foods, feeds, &amp; beverages</b> .....	0	8.260	189.0	184.7	-17.0	-1.2	-1.2	-1.2	-2.3
Agricultural foods, feeds & beverages, excluding distilled beverages.....	00	7.552	189.0	186.1	-17.8	-2.0	-1.1	-0.9	-1.5
Nonagricultural foods (fish, distilled beverages).....	01	0.708	197.4	177.3	-4.5	8.5	-2.0	-4.1	-10.2
<b>Industrial supplies &amp; materials</b> .....	1	31.426	156.4	156.0	-11.9	0.3	-1.5	2.0	-0.3
Industrial supplies & materials, durable....		10.990	160.1	159.7	-6.2	-1.5	-0.4	0.0	-0.2
Industrial supplies & materials, nondurable.....		20.436	155.3	154.9	-14.7	1.4	-2.1	3.2	-0.3
Agricultural industrial supplies & materials.....	10	1.353	183.4	180.4	-9.3	0.8	-0.2	-2.3	-1.6
<b>Nonagricultural industrial supplies &amp; materials</b> .....		30.072	155.6	155.3	-12.0	0.3	-1.6	2.2	-0.2
Fuels & lubricants.....	11	8.207	186.8	187.4	-27.1	3.8	-5.8	8.0	0.3
Nonagricultural supplies & materials excluding fuels & building materials....	12	20.870	158.2	157.8	-4.8	-0.9	0.0	0.3	-0.3
Selected building materials.....	13	0.995	117.6	115.5	-8.1	-0.5	-0.5	-0.8	-1.8
<b>Capital goods</b> .....	2	37.750	107.5	107.5	0.0	0.0	-0.2	-0.1	0.0
Electrical generating equipment.....	20	3.818	114.5	114.6	-1.1	0.0	-0.2	-0.1	0.1
Nonelectrical machinery.....	21	25.823	95.1	95.1	-0.6	0.0	-0.3	-0.2	0.0
Transportation equipment excluding motor vehicles (Dec. 2001=100).....	22	8.109	160.9	161.0	3.0	0.1	0.1	0.1	0.1
<b>Automotive vehicles, parts &amp; engines</b> .....	3	10.146	114.0	114.1	0.0	0.1	0.0	0.1	0.1
<b>Consumer goods, excluding automotives</b> .....	4	12.418	112.5	112.8	-1.9	-0.1	-0.4	0.0	0.3
Nondurables, manufactured.....	40	5.514	108.4	108.8	-2.0	-0.3	-0.4	0.0	0.4
Durables, manufactured.....	41	5.294	110.4	110.8	-1.3	0.2	-0.5	0.0	0.4

<sup>1</sup> Relative importance figures are based on 2013 trade values.

NOTES: Data may be revised in each of the three months after original publication.

Dash = Not available

**Table 3. U.S. import price indexes and percent changes for selected categories of goods: June 2014 to June 2015**

[December 2005=100, unless otherwise noted]

Description	NAICS	Relative importance May 2015 <sup>1</sup>	Index		Percent change				
			May 2015	June 2015	Annual June 2014 to June 2015	Monthly			
						Feb. 2015 to Mar. 2015	Mar. 2015 to Apr. 2015	Apr. 2015 to May 2015	May 2015 to June 2015
<b>Nonmanufactured articles.....</b>		10.825	108.5	109.6	-37.4	-0.2	2.5	9.9	1.0
<b>Agriculture, forestry, fishing and hunting.....</b>	11	2.044	177.9	176.7	1.6	-1.4	-0.1	1.6	-0.7
Crop production.....	111	1.643	188.6	186.8	3.5	-2.2	0.2	2.6	-1.0
Animal production (Dec. 2014=100).....	112	0.221	91.6	93.8	—	0.1	0.3	-2.4	2.4
Forestry and logging (Dec. 2012=100).....	113	0.108	64.0	63.9	-20.6	-2.2	-2.1	-0.6	-0.2
<b>Mining.....</b>	21	8.781	100.4	101.9	-41.7	0.1	3.1	12.1	1.5
Mining (except oil and gas) (Dec. 2006=100).....	212	0.212	102.2	101.7	-17.8	0.4	-12.1	0.3	-0.5
<b>Manufactured articles.....</b>		88.859	112.0	111.8	-4.2	-0.2	-0.4	0.2	-0.2
<b>Manufactured goods, part 1.....</b>	31	11.825	124.6	124.4	-0.8	-0.5	-0.3	-0.2	-0.2
Food manufacturing.....	311	3.283	153.4	152.7	-4.4	-1.9	-0.9	-0.5	-0.5
Beverage and tobacco product manufacturing.....	312	1.071	117.5	117.7	1.9	0.3	-0.3	0.0	0.2
Textile mills (Dec. 2011=100).....	313	0.400	101.2	101.2	-0.8	-0.3	-0.7	-0.1	0.0
Textile product mills.....	314	0.877	112.5	112.4	-1.7	-0.3	-0.3	-0.1	-0.1
Apparel manufacturing.....	315	4.322	112.2	112.0	0.9	0.2	0.0	0.0	-0.2
Leather and allied product manufacturing.....	316	1.871	124.1	124.1	0.6	-0.1	-0.1	0.0	0.0
<b>Manufactured goods, part 2.....</b>	32	17.537	124.1	123.7	-10.9	0.7	-0.7	1.2	-0.3
Wood product manufacturing.....	321	0.697	112.7	114.1	-5.5	-1.9	-1.3	-2.0	1.2
Paper manufacturing.....	322	1.094	109.1	108.4	-2.2	-0.9	-0.5	0.1	-0.6
Petroleum and coal products manufacturing.....	324	2.941	104.0	102.5	-38.2	6.0	-3.0	7.9	-1.4
Chemical manufacturing.....	325	9.471	134.4	134.1	-2.5	-0.3	-0.1	0.1	-0.2
Plastics and rubber products manufacturing.....	326	2.167	119.8	119.7	-2.6	-0.1	-0.5	0.0	-0.1
Nonmetallic mineral product manufacturing.....	327	0.963	130.4	130.8	0.2	0.1	-0.1	0.2	0.3
<b>Manufactured goods, part 3.....</b>	33	59.497	105.5	105.3	-2.7	-0.4	-0.3	-0.1	-0.2
Primary metal manufacturing.....	331	3.986	140.1	138.5	-12.3	-2.8	-1.9	-0.7	-1.1
Fabricated metal product manufacturing.....	332	2.985	126.2	126.2	-0.6	-0.1	-0.2	0.0	0.0
Machinery manufacturing.....	333	7.125	119.0	119.1	-2.1	0.0	-0.5	0.2	0.1
Computer and electronic product manufacturing.....	334	17.499	78.2	78.1	-2.6	-0.1	-0.1	-0.3	-0.1
Electrical equipment, appliance, and component manufacturing.....	335	4.642	117.6	117.5	-1.1	-0.1	-0.8	0.0	-0.1
Transportation equipment manufacturing.....	336	16.270	110.2	110.1	-1.6	-0.1	-0.1	0.0	-0.1
Furniture and related product manufacturing.....	337	1.562	116.0	116.2	0.2	0.0	-0.1	0.0	0.2
Miscellaneous manufacturing.....	339	5.429	120.3	120.3	-1.5	-0.4	-0.1	-0.1	0.0

<sup>1</sup> Relative importance figures are based on 2013 trade values.

NOTES: Data may be revised in each of the three months after original publication.

Dash = Not available

**Table 4. U.S. export price indexes and percent changes for selected categories of goods: June 2014 to June 2015**

[December 2005=100, unless otherwise noted]

Description	NAICS	Relative importance May 2015 <sup>1</sup>	Index		Percent change				
			May 2015	June 2015	Annual June 2014 to June 2015	Monthly			
						Feb. 2015 to Mar. 2015	Mar. 2015 to Apr. 2015	Apr. 2015 to May 2015	May 2015 to June 2015
<b>Nonmanufactured articles.....</b>		6.440	134.3	131.9	-19.7	2.0	-2.3	-0.4	-1.8
<b>Agriculture, forestry, fishing and hunting.....</b>	11	4.235	165.7	163.4	-17.4	0.5	0.4	-1.7	-1.4
Crop production.....	111	3.861	171.2	170.0	-17.6	-0.2	0.6	-1.6	-0.7
<b>Mining.....</b>	21	2.205	74.8	72.9	-23.2	4.9	-7.5	2.2	-2.5
Mining (except oil and gas).....	212	1.220	90.4	88.3	-10.5	-0.8	-1.6	1.8	-2.3
<b>Manufactured articles.....</b>		92.034	115.4	115.2	-4.5	0.0	-0.7	0.6	-0.2
<b>Manufactured goods, part 1.....</b>	31	6.975	141.3	139.3	-11.7	-1.8	-1.5	-0.9	-1.4
Food manufacturing.....	311	4.772	159.6	157.0	-14.6	-2.4	-2.1	-0.8	-1.6
Beverage and tobacco product manufacturing.....	312	0.603	115.2	111.5	-5.7	0.6	1.3	-2.5	-3.2
<b>Manufactured goods, part 2.....</b>	32	24.748	116.8	116.7	-11.1	0.8	-1.5	2.5	-0.1
Paper manufacturing.....	322	1.862	123.7	123.8	-0.2	-0.2	-0.2	0.0	0.1
Petroleum and coal products manufacturing.....	324	5.733	112.8	113.4	-30.0	4.4	-6.6	10.4	0.5
Chemical manufacturing.....	325	13.311	121.6	121.1	-5.2	-0.4	0.3	0.6	-0.4
Plastics and rubber products manufacturing.....	326	2.238	118.9	118.8	-0.4	0.1	-0.4	0.1	-0.1
Nonmetallic mineral product manufacturing.....	327	0.815	112.2	112.5	-0.7	-0.1	-0.2	-0.2	0.3
<b>Manufactured goods, part 3.....</b>	33	60.311	112.3	112.2	-0.5	-0.2	-0.2	-0.1	-0.1
Primary metal manufacturing.....	331	4.752	140.2	139.2	-4.9	-2.1	-0.6	-0.6	-0.7
Fabricated metal product manufacturing.....	332	2.984	129.2	128.9	0.9	-0.2	0.0	-0.1	-0.2
Machinery manufacturing.....	333	11.435	125.3	125.5	1.1	0.2	0.0	0.2	0.2
Computer and electronic product manufacturing.....	334	14.130	85.7	85.6	-2.7	-0.2	-0.7	-0.5	-0.1
Electrical equipment, appliance, and component manufacturing.....	335	3.736	115.1	114.8	0.0	0.1	0.3	0.0	-0.3
Transportation equipment manufacturing..	336	17.356	121.4	121.5	1.3	0.1	0.1	0.1	0.1
Furniture and related product manufacturing (Dec. 2011=100).....	337	0.380	109.8	109.2	1.2	-2.3	0.8	1.1	-0.5
Miscellaneous manufacturing.....	339	5.539	123.0	123.7	-1.4	0.2	-0.5	-0.1	0.6

<sup>1</sup> Relative importance figures are based on 2013 trade values.

NOTES: Data may be revised in each of the three months after original publication.

Dash = Not available



**Table 5. U.S. import price indexes and percent changes for selected categories of goods: June 2014 to June 2015**

[2000=100, unless otherwise noted]

Description	Harmonized system	Relative importance May 2015 <sup>1</sup>	Index		Percent change				
			May 2015	June 2015	Annual	Monthly			
					June 2014 to June 2015	Feb. 2015 to Mar. 2015	Mar. 2015 to Apr. 2015	Apr. 2015 to May 2015	May 2015 to June 2015
<b>Live animals; animal products.....</b>	I	1.334	187.0	186.1	-5.0	-1.7	-0.9	-1.7	-0.5
Meat and edible meat offal.....	02	0.321	241.6	239.4	-4.8	-5.3	-0.4	0.5	-0.9
Fish and crustaceans, molluscs and other aquatic invertebrates.....	03	0.678	129.7	127.4	-9.2	-1.1	-1.7	-2.9	-1.8
<b>Vegetable products.....</b>	II	1.958	203.5	201.9	2.8	-1.7	-1.5	3.5	-0.8
Edible vegetables, roots, and tubers.....	07	0.546	465.8	459.9	29.9	8.9	-4.4	14.1	-1.3
Edible fruit and nuts; peel of citrus fruit or melons.....	08	0.492	98.5	95.8	-5.2	-1.8	-0.3	-1.0	-2.7
Coffee, tea, mate and spices.....	09	0.367	240.5	242.0	0.5	-4.6	-0.2	-1.6	0.6
<b>Animal or vegetable fats and oils (Dec. 2009=100).....</b>	III	0.267	105.3	105.9	-8.5	-0.2	-4.1	1.5	0.6
<b>Prepared foodstuffs, beverages, and tobacco.....</b>	IV	2.770	160.9	160.7	-0.6	-0.7	-0.2	-0.4	-0.1
Sugars and sugar confectionary (Dec. 2012=100).....	17	0.185	91.0	90.6	-1.8	-0.2	-0.7	-0.1	-0.4
Cocoa and cocoa preparations (Dec. 2009=100).....	18	0.247	110.6	111.1	-2.6	-3.6	0.0	2.2	0.5
Preparations of cereals, flour, starch or milk; bakers' wares (Dec. 2007=100).....	19	0.276	132.0	132.0	0.5	-0.2	-0.2	-0.2	0.0
Preparations of vegetables, fruit, nuts, or other parts of plants.....	20	0.330	158.0	154.9	-8.7	-1.2	-0.8	-2.2	-2.0
Beverages, spirits, and vinegar.....	22	1.040	127.5	127.6	1.4	0.3	-0.4	0.1	0.1
<b>Mineral products.....</b>	V	11.868	207.2	208.9	-40.8	1.5	1.5	10.9	0.8
Mineral fuels, oils and residuals, bituminous substances and mineral waxes.....	27	11.633	204.5	206.2	-41.1	1.5	1.8	11.1	0.8
<b>Products of the chemical or allied industries.....</b>	VI	8.649	148.8	148.3	-2.8	-0.1	0.2	0.1	-0.3
Inorganic chemicals.....	28	0.665	300.8	295.4	-9.3	-1.8	0.7	-0.9	-1.8
Organic chemicals.....	29	2.453	124.3	123.5	-8.6	-0.1	0.6	0.4	-0.6
Pharmaceutical products.....	30	3.466	136.6	136.7	1.9	0.1	0.2	0.0	0.1
Fertilizers (Dec. 2009=100).....	31	0.390	113.8	111.8	3.2	-0.5	-2.0	1.9	-1.8
Tanning extracts; dye, pigments, varnish, paints & putty (Dec. 2011=100).....	32	0.202	98.3	99.5	-1.7	-4.3	-1.7	0.0	1.2
Miscellaneous chemical products.....	38	0.551	91.0	91.0	-2.8	0.0	0.6	0.3	0.0
<b>Plastics and articles thereof; rubber and articles thereof.....</b>	VII	3.380	142.2	142.0	-4.1	-0.6	-0.8	-0.1	-0.1
Plastics and articles thereof.....	39	2.203	146.8	146.2	-2.4	-0.7	-0.8	0.0	-0.4
Rubber and articles thereof.....	40	1.177	135.8	136.0	-7.0	-0.4	-0.8	-0.3	0.1
<b>Raw hides, skins, leather, furskins, travel goods, etc.....</b>	VIII	0.715	128.1	128.1	0.3	0.1	-0.1	-0.1	0.0
Articles of leather; travel goods, bags, etc. of various materials.....	42	0.666	130.6	130.7	0.4	0.1	0.0	-0.1	0.1
<b>Wood, wood charcoal, cork, straw, basketware and wickerwork.....</b>	IX	0.723	137.1	138.5	-5.4	-1.8	-1.2	-1.9	1.0
Wood and articles of wood; wood charcoal (Dec. 2014=100).....	44	0.686	94.0	95.0	-	-1.9	-1.2	-2.0	1.1
<b>Woodpulp, recovered paper, and paper products.....</b>	X	1.147	112.0	111.9	-1.6	-0.4	-0.4	0.0	-0.1
Paper and paperboard; articles of paper pulp, paper or paperboard.....	48	0.765	106.2	106.1	-1.0	-0.4	-0.2	0.0	-0.1
<b>Textile and textile articles.....</b>	XI	5.437	114.7	114.6	0.4	0.0	-0.2	0.1	-0.1

See footnotes at end of table.

**Table 5. U.S. import price indexes and percent changes for selected categories of goods: June 2014 to June 2015 — Continued**

[2000=100, unless otherwise noted]

Description	Harmoni- zied system	Relative importance May 2015 <sup>1</sup>	Index		Percent change				
			May 2015	June 2015	Annual June 2014 to June 2015	Monthly			
						Feb. 2015 to Mar. 2015	Mar. 2015 to Apr. 2015	Apr. 2015 to May 2015	May 2015 to June 2015
Articles of apparel and clothing accessories, knitted or crocheted.....	61	2.177	104.3	104.3	1.4	0.4	-0.1	0.1	0.0
Articles of apparel and clothing accessories, not knitted or crocheted.....	62	1.952	120.3	120.0	0.8	-0.1	0.0	0.0	-0.2
Made-up or worn textile articles.....	63	0.633	106.6	106.6	-1.3	-0.2	-0.1	-0.1	0.0
<b>Headgear, umbrellas, artificial flowers, etc...</b>	XII	1.483	122.9	122.9	0.8	0.1	0.0	0.0	0.0
Footwear and parts of such articles.....	64	1.289	122.0	122.0	0.5	-0.1	-0.1	0.0	0.0
<b>Stone, plaster, cement, asbestos, ceramics, glass etc.....</b>	XIII	0.894	132.5	133.2	0.0	0.2	-0.2	0.2	0.5
Ceramic products.....	69	0.268	138.8	138.9	-1.9	0.2	-0.1	0.1	0.1
Glass and glassware.....	70	0.313	129.6	129.9	0.2	0.1	0.2	0.2	0.2
<b>Pearls, stones, precious metals, imitation jewelry, and coins.....</b>	XIV	3.031	171.6	171.3	-4.9	-2.0	0.0	-0.5	-0.2
<b>Base metals and articles of base metals. ...</b>	XV	5.305	169.8	168.4	-8.0	-1.3	-1.3	-0.1	-0.8
Iron and steel.....	72	1.081	182.5	181.6	-18.3	-3.0	-4.9	-2.2	-0.5
Articles of iron or steel.....	73	1.677	149.7	148.5	-3.6	-0.6	-0.6	0.1	-0.8
Copper and articles thereof.....	74	0.464	292.9	303.3	-7.3	0.8	0.9	0.8	3.6
Aluminum and articles thereof.....	76	0.758	136.2	131.5	-6.6	-2.6	0.3	0.1	-3.5
Tools, implements, cutlery, spoons and forks, of base metal; parts thereof.....	82	0.443	128.8	129.0	-0.1	0.1	-0.2	0.0	0.2
Miscellaneous articles of base metal.....	83	0.516	138.3	138.4	1.2	0.2	-0.1	0.1	0.1
<b>Machinery, electrical equipment, TV image and sound recorders, parts, etc.....</b>	XVI	29.438	82.7	82.6	-2.4	-0.2	-0.4	0.0	-0.1
Machinery and mechanical appliances; parts thereof.....	84	14.965	87.8	87.8	-2.1	-0.1	-0.3	-0.2	0.0
Electrical machinery and equip, sound and TV recorders & reproducers, parts.....	85	14.473	77.7	77.7	-2.6	-0.3	-0.4	0.0	0.0
<b>Vehicles, aircraft, vessels and associated transport equipment.....</b>	XVII	13.640	114.6	114.6	-1.3	-0.1	0.0	0.0	0.0
Motor vehicles and their parts.....	87	12.323	113.2	113.2	-1.5	-0.1	0.0	0.0	0.0
Aircraft, spacecraft, and parts thereof (Dec. 2002=100).....	88	1.225	119.9	119.9	0.0	-0.2	-0.1	0.1	0.0
<b>Optical, photo, measuring, medical &amp; musical instruments; &amp; timepieces.....</b>	XVIII	3.858	103.7	103.8	-1.0	0.1	-0.4	0.0	0.1
Optical, photographic, measuring and medical instruments.....	90	3.539	100.5	100.6	-1.1	0.1	-0.3	0.0	0.1
Clocks and watches and parts thereof.....	91	0.258	141.8	141.9	-1.4	0.0	-0.7	-0.1	0.1
<b>Miscellaneous manufactured articles.....</b>	XX	3.995	113.0	112.8	-0.6	-0.2	-0.2	-0.2	-0.2
Furniture & stuffed furnishings; lamps & lighting fittings, nesoi; prefab bldgs.....	94	2.407	117.6	117.3	-0.3	-0.3	-0.3	-0.2	-0.3
Toys, games and sports equipment; parts and accessories thereof.....	95	1.333	104.8	104.8	-0.9	0.0	-0.1	-0.1	0.0
Miscellaneous manufactured articles.....	96	0.255	134.2	134.1	-1.0	-0.2	-0.1	-0.1	-0.1

<sup>1</sup> Relative importance figures are based on 2013 trade values.

NOTES: Data may be revised in each of the three months after original publication.

Dash = Not available

**Table 6. U.S. export price indexes and percent changes for selected categories of goods: June 2014 to June 2015**

[2000=100, unless otherwise noted]

Description	Harmoni- zied system	Relative importance May 2015 <sup>1</sup>	Index		Percent change				
			May 2015	June 2015	Annual	Monthly			
					June 2014 to June 2015	Feb. 2015 to Mar. 2015	Mar. 2015 to Apr. 2015	Apr. 2015 to May 2015	May 2015 to June 2015
<b>Live animals; animal products.....</b>	I	1.912	202.3	195.4	-19.4	-1.9	-3.1	-1.1	-3.4
Meat & edible meat offal (Dec. 2006=100)...	02	1.107	155.2	151.2	-20.0	-5.5	-3.9	-1.3	-2.6
Fish and crustaceans, molluscs and other aquatic invertebrates.....	03	0.423	220.5	206.8	3.3	9.6	-3.8	-2.1	-6.2
<b>Vegetable products.....</b>	II	3.972	210.3	206.9	-18.1	-1.3	-0.3	-1.0	-1.6
Edible fruit and nuts; peel of citrus fruit or melons.....	08	1.156	181.0	177.6	2.1	-4.4	-0.9	4.7	-1.9
Cereals.....	10	0.969	192.6	194.4	-21.1	-0.8	2.9	-9.1	0.9
Oilseeds and misc. grains, seeds, fruits, plants, straw and fodder.....	12	1.420	212.2	204.7	-30.4	-0.1	-1.4	-0.1	-3.5
<b>Animal or vegetable fats and oils (Dec. 2009=100).....</b>	III	0.199	95.1	98.8	-15.0	-0.2	-1.4	-0.3	3.9
<b>Prepared foodstuffs, beverages, and tobacco.....</b>	IV	2.935	154.7	152.3	-10.1	-1.6	-0.9	-1.3	-1.6
Preparations of vegetables, fruit, nuts or other parts of plants (Dec. 2009=100).....	20	0.401	118.4	118.1	-0.8	0.1	-0.3	0.2	-0.3
Beverages, spirits, and vinegar (Dec. 2008=100).....	22	0.513	110.7	112.2	1.4	-0.1	0.3	0.2	1.4
Residues and waste from the food industries; prepared animal feed.....	23	0.738	222.6	212.4	-24.0	-2.3	-0.1	-4.5	-4.6
<b>Mineral products.....</b>	V	8.054	214.3	213.4	-27.9	3.8	-6.0	8.1	-0.4
Ores, slag and ash (Dec. 2012=100).....	26	0.503	90.4	86.0	-9.5	-0.2	-2.7	5.0	-4.9
Mineral fuels, oils and residuals, bituminous substances and mineral waxes.....	27	7.361	207.0	206.9	-29.3	4.1	-6.4	8.7	0.0
<b>Products of the chemical or allied industries.....</b>	VI	10.890	144.0	143.7	-4.0	-0.3	0.2	0.0	-0.2
Inorganic chemicals.....	28	0.897	185.7	183.0	6.6	1.3	0.3	0.4	-1.5
Organic chemicals.....	29	2.954	147.0	146.4	-10.2	-1.3	0.6	0.5	-0.4
Pharmaceutical products.....	30	2.563	111.1	111.6	-3.6	-0.4	-0.4	0.3	0.5
Essential oils and resinoids; perfumery cosmetic or toilet preparations.....	33	0.787	136.5	136.4	2.2	0.2	0.1	0.1	-0.1
Soap; lubricants; waxes, polishing or scouring products; candles, pastes.....	34	0.479	114.4	114.8	-4.8	0.7	-0.1	0.0	0.3
Miscellaneous chemical products.....	38	1.899	152.9	151.8	-3.3	-0.2	1.2	-1.4	-0.7
<b>Plastics and articles thereof; rubber and articles thereof.....</b>	VII	5.196	144.4	143.5	-4.7	-0.1	-0.3	0.4	-0.6
Plastics and articles thereof.....	39	4.243	140.0	138.8	-4.4	-0.2	-0.4	0.5	-0.9
Rubber and articles thereof.....	40	0.953	162.3	163.4	-5.8	0.1	-0.2	-0.1	0.7
<b>Raw hides, skins, leather, furskins, travel goods, etc.....</b>	VIII	0.423	141.8	139.9	-12.1	-0.5	-2.4	-1.8	-1.3
Raw hides and skins other than furskins and leather (Dec.2014=100).....	41	0.257	90.0	87.6	-	-0.6	-3.7	-2.5	-2.7
<b>Wood, wood charcoal, cork, straw, baskets and wickerwork (Dec. 2014=100).....</b>	IX	0.617	97.7	97.2	-	-0.6	-0.9	-0.2	-0.5
<b>Woodpulp, recovered paper, and paper products.....</b>	X	2.227	123.4	123.7	-0.1	-0.4	0.0	0.4	0.2
Woodpulp and recovered paper.....	47	0.618	123.6	126.4	-0.3	-0.8	0.2	1.3	2.3
Paper and paperboard; articles of paper pulp, paper or paperboard.....	48	1.204	123.7	122.8	-0.5	-0.3	0.2	0.1	-0.7
Printed material (Dec. 2014=100).....	49	0.405	99.1	99.1	-	0.0	-1.2	0.0	0.0
<b>Textile and textile articles.....</b>	XI	1.772	122.0	122.3	-7.7	-0.6	0.2	-0.6	0.2

See footnotes at end of table.

**Table 6. U.S. export price indexes and percent changes for selected categories of goods: June 2014 to June 2015 — Continued**

[2000=100, unless otherwise noted]

Description	Harmonized system	Relative importance May 2015 <sup>1</sup>	Index		Percent change				
			May 2015	June 2015	Annual	Monthly			
					June 2014 to June 2015	Feb. 2015 to Mar. 2015	Mar. 2015 to Apr. 2015	Apr. 2015 to May 2015	May 2015 to June 2015
Cotton, including yarns and woven fabrics thereof.....	52	0.448	117.5	119.1	-17.8	-0.9	0.9	-1.9	1.4
<b>Stone, plaster, cement, asbestos, ceramics, glass etc.....</b>	XIII	0.816	122.2	122.4	1.8	0.0	-0.2	-0.2	0.2
Glass and glassware.....	70	0.421	99.0	99.0	0.3	0.0	-0.3	-0.3	0.0
<b>Pearls, stones, precious metals, imitation jewelry, and coins.....</b>	XIV	4.752	234.8	233.8	-4.8	-1.6	-0.3	-0.6	-0.4
<b>Base metals and articles of base metals. ...</b>	XV	5.167	152.5	152.8	-6.4	-1.2	-0.7	0.3	0.2
Iron and steel.....	72	1.162	156.8	165.5	-13.7	-4.6	-1.8	-1.2	5.5
Copper and articles thereof.....	74	0.538	199.2	190.8	-15.2	2.2	0.7	5.7	-4.2
Aluminum and articles thereof.....	76	0.891	118.4	115.5	-3.6	-1.0	-0.3	0.3	-2.4
Miscellaneous articles of base metal.....	83	0.330	147.7	147.7	0.4	0.0	0.0	0.0	0.0
<b>Machinery, electrical equipment, TV image and sound recorders, parts, etc.....</b>	XVI	28.825	97.1	97.0	-0.6	0.0	-0.4	-0.1	-0.1
Machinery and mechanical appliances; parts thereof.....	84	17.359	113.6	113.5	0.5	0.0	-0.3	-0.1	-0.1
Electrical machinery and equipment and parts and accessories thereof.....	85	11.466	79.2	79.2	-2.2	-0.1	-0.5	-0.3	0.0
<b>Vehicles, aircraft, vessels and associated transport equipment.....</b>	XVII	14.489	130.8	130.9	0.7	0.1	0.1	0.2	0.1
Motor vehicles and their parts.....	87	9.010	115.1	115.1	-0.1	0.1	0.0	0.2	0.0
<b>Optical, photo, measuring, medical &amp; musical instruments; &amp; timepieces.....</b>	XVIII	6.138	106.8	107.6	-0.1	-0.1	-0.3	-0.2	0.7
<b>Miscellaneous manufactured articles.....</b>	XX	1.484	111.7	111.3	0.7	-0.4	0.5	0.2	-0.4
Furniture; stuffed furnishings; lamps and lighting fittings nesoi;.....	94	0.847	124.4	123.7	1.6	-0.7	1.1	0.5	-0.6
Toys, games and sports equipment; parts and accessories thereof.....	95	0.476	89.5	89.6	0.1	0.1	-0.3	-0.2	0.1

<sup>1</sup> Relative importance figures are based on 2013 trade values.

NOTES: Data may be revised in each of the three months after original publication.

Dash = Not available

**Table 7. U.S. import price indexes and percent changes by locality of origin: June 2014 to June 2015**  
 [2000=100, unless otherwise noted]

Description	Relative importance May 2015 <sup>1</sup>	Index		Percent change				
		May 2015	June 2015	Annual	Monthly			
				June 2014 to June 2015	Feb. 2015 to Mar. 2015	Mar. 2015 to Apr. 2015	Apr. 2015 to May 2015	May 2015 to June 2015
<b>Industrialized Countries<sup>2</sup></b> .....	100.000	122.0	122.1	-8.7	-0.6	0.0	1.1	0.1
Nonmanufactured articles.....	8.764	152.9	154.2	-40.2	-1.3	3.6	9.8	0.9
Manufactured articles.....	90.789	119.2	119.2	-3.9	-0.4	-0.4	0.3	0.0
<b>Other Countries<sup>3</sup></b> .....	100.000	124.4	124.6	-10.2	0.0	-0.2	1.0	0.2
Nonmanufactured articles.....	11.980	221.2	223.8	-36.6	0.3	2.9	8.6	1.2
Manufactured articles.....	87.790	105.8	105.8	-3.7	0.0	-0.7	0.0	0.0
<b>Canada</b> .....	100.000	128.9	129.4	-17.3	-0.7	0.6	2.4	0.4
Nonmanufactured articles.....	24.161	146.9	147.8	-40.9	-0.9	3.9	10.0	0.6
Manufactured articles.....	75.133	128.3	128.7	-4.9	-0.7	-0.2	0.2	0.3
<b>European Union<sup>4</sup></b> .....	100.000	134.6	134.9	-3.0	-0.2	-0.5	0.7	0.2
Manufactured articles.....	99.360	131.0	131.4	-2.8	-0.3	-0.5	0.7	0.3
<b>France (Dec. 2003=100)</b> .....	100.000	121.5	121.9	-1.1	-0.1	-0.3	-0.4	0.3
<b>Germany (Dec. 2003=100)</b> .....	100.000	116.5	117.1	-2.4	-0.3	-0.3	-0.1	0.5
<b>United Kingdom (Dec. 2003=100)</b> .....	100.000	121.6	121.8	-7.2	0.0	-0.4	0.2	0.2
<b>Latin America<sup>5</sup></b> .....	100.000	151.0	151.2	-12.8	0.1	0.3	1.5	0.1
Nonmanufactured articles.....	19.960	247.4	249.3	-33.6	0.3	3.5	8.1	0.8
Manufactured articles.....	79.630	124.9	124.9	-4.1	0.1	-0.4	0.0	0.0
<b>Mexico (Dec. 2003=100)</b> .....	100.000	131.7	131.8	-7.2	0.2	0.1	0.4	0.1
Nonmanufactured articles (Dec. 2008=100).....	11.007	134.9	135.2	-32.9	3.3	2.2	6.9	0.2
Manufactured articles (Dec. 2008=100)...	88.686	90.8	90.8	-2.0	-0.1	-0.2	-0.3	0.0
<b>Pacific Rim (Dec. 2003=100)<sup>6</sup></b> .....	100.000	100.6	100.4	-2.2	-0.1	-0.3	-0.2	-0.2
<b>China (Dec. 2003=100)</b> .....	100.000	103.0	102.9	-1.2	-0.1	0.0	-0.3	-0.1
<b>Japan</b> .....	100.000	96.4	96.0	-2.9	-0.1	-0.5	-0.1	-0.4
<b>Asian NICs<sup>7</sup></b> .....	100.000	86.6	86.2	-3.0	-0.7	-0.6	0.2	-0.5
<b>ASEAN (Dec. 2003=100)<sup>8</sup></b> .....	100.000	98.8	98.8	-4.9	-0.2	-1.0	-0.2	0.0
<b>Asia Near East (Dec. 2003=100)<sup>9</sup></b> .....	100.000	178.6	181.8	-31.6	-0.5	2.1	6.8	1.8

<sup>1</sup> Relative importance figures are based on 2013 trade values.

<sup>2</sup> Western Europe, Canada, Japan, Australia, New Zealand and South Africa.

<sup>3</sup> Eastern Europe, Latin America, OPEC countries, and other countries in Asia, Africa and the Western Hemisphere.

<sup>4</sup> European Union countries.

<sup>5</sup> Mexico, Central America, South America and the Caribbean.

<sup>6</sup> China, Japan, Australia, Brunei, Indonesia, Macao, Malaysia, New Zealand, Papua New Guinea, Philippines and the Asian Newly Industrialized Countries.

<sup>7</sup> Asian Newly Industrialized Countries - Hong Kong, Singapore, South Korea and Taiwan.

<sup>8</sup> Association of Southeast Asian Nations - Brunei, Cambodia, Indonesia, Laos, Malaysia, Myanmar, Philippines, Singapore, Thailand and Vietnam.

<sup>9</sup> Bahrain, Iran, Iraq, Israel, Jordan, Kuwait, Lebanon, Oman, Qatar, Saudi Arabia, Syria, United Arab Emirates and Yemen.

NOTES: Data may be revised in each of the three months after original publication.

Regions are not mutually exclusive.

Dash = Not available

**Table 8. U.S. international price indexes and percent changes for selected transportation services: June 2014 to June 2015**

[2000=100, unless otherwise noted]

Description	Relative importance May 2015 <sup>1</sup>	Index		Percent change				
		May 2015	June 2015	Annual June 2014 to June 2015	Monthly			
					Feb. 2015 to Mar. 2015	Mar. 2015 to Apr. 2015	Apr. 2015 to May 2015	May 2015 to June 2015
<b>Air Freight</b>								
<b>Import Air Freight</b> .....	100.000	175.4	173.8	-1.1	3.0	1.9	-0.3	-0.9
Europe (Dec. 2003=100).....	24.769	158.7	162.7	-10.0	-1.8	4.5	1.1	2.5
Asia.....	68.676	158.4	155.0	2.4	4.8	0.9	-0.9	-2.1
<b>Export Air Freight</b> .....	100.000	157.4	157.8	-1.6	-1.7	0.9	-0.4	0.3
Europe (Dec. 2006=100).....	33.134	150.5	150.8	5.3	-1.7	1.5	-0.5	0.2
<b>Inbound Air Freight</b> .....	100.000	160.7	160.1	-3.1	0.4	1.2	-0.4	-0.4
Europe (Dec. 2003=100).....	25.432	144.0	146.9	-8.0	-1.3	2.3	0.1	2.0
Asia.....	60.624	147.5	145.4	-1.5	1.1	1.0	-0.8	-1.4
<b>Outbound Air Freight</b> .....	100.000	148.6	148.2	-3.2	-0.6	-2.2	2.0	-0.3
Europe (Dec. 2003=100).....	31.121	158.1	158.1	-8.0	-0.5	-6.7	-0.1	0.0
Asia.....	44.151	140.7	140.8	-3.0	-0.4	0.4	-0.2	0.1
<b>Air Passenger Fares</b>								
<b>Import Air Passenger Fares</b> .....	100.000	189.3	206.2	-1.1	-2.4	-2.9	1.9	8.9
Europe.....	48.973	227.3	241.8	2.4	-3.8	-5.5	3.4	6.4
Asia.....	25.289	145.5	158.7	-5.2	2.2	-3.0	6.1	9.1
Latin America/Caribbean.....	9.834	159.2	159.7	-5.7	0.6	-0.8	-3.9	0.3
<b>Export Air Passenger Fares</b> .....	100.000	163.1	165.4	-15.9	0.7	-3.6	2.8	1.4
Europe.....	30.461	209.9	227.5	-13.7	0.5	-4.0	4.3	8.4
Asia.....	27.936	142.0	142.5	-15.3	-0.1	-5.5	9.1	0.4
Latin America/Caribbean.....	22.521	165.4	167.2	-15.0	2.8	-7.3	-3.1	1.1

<sup>1</sup> Relative importance figures are based on 2013 trade values.

NOTES: Data may be revised in each of the three months after original publication.

Dash = Not available

## TECHNICAL NOTE

**Import and Export Merchandise and Services Price Indexes** -- All indexes use a modified Laspeyres formula and are not seasonally adjusted. Price indexes are reweighted annually, with a two-year lag in the weights. Published series use a base year of 2000=100 where possible. More detailed index series and additional information may be obtained at <http://www.bls.gov/mxp>, or by calling (202) 691-7101.

**Merchandise Goods Classification Systems** -- The merchandise price indexes are published using three classification systems. Items are classified by end use according to the Bureau of Economic Analysis Classification System, by industry according to the North American Industry Classification System (NAICS), and by product category according to the Harmonized System (HS). While classification by end use and product category are self-explanatory, some notes are in order for classifying items by industry. In the NAICS imports and exports tables, items are classified by output industry, not input industry. As an example, NAICS import index 326 (plastics and rubber products manufacturing) include outputs such as manufactured plastic rather than inputs such as petroleum. The NAICS classification structure also matches the classification system used by the PPI (Producer Price Index) to produce the NAICS primary products indexes.

**Import Price Indexes** -- Products have been classified by the Harmonized Tariff Schedule of the United States Annotated (TSUSA). Import prices are based on U.S. dollar prices paid by the U.S. importer. The prices are generally either "free on board" (f.o.b.) foreign port or "cost, insurance, and freight" (c.i.f.) U.S. port transaction prices, depending on the practices of the individual industry. The index for crude petroleum is calculated from data collected by the U.S. Department of Energy.

**Export Price Indexes** -- Products have been classified by the Harmonized Schedule B classification system of the U.S. Bureau of the Census. The prices used are generally either "free alongside ship" (f.a.s.) factory or "free on board" (f.o.b.) transaction prices, depending on the practices of the individual industry. Prices used in the grain index, excluding rice, are obtained from the U.S. Department of Agriculture.

**Services Price Indexes** -- Starting in September 2008 the Import Air Passenger Fares Indexes represent changes in the average revenue per passenger received by foreign carriers from U.S. residents and are calculated from data obtained from an airline consulting service. These data include tickets sold by travel agencies and travel websites. Tickets sold directly by the airlines are excluded, as are frequent flyer tickets generally. Starting in January 2008 the Export Air Passenger Fares Indexes represent changes in the average revenue per passenger received by U.S. carriers from foreign residents and are calculated from data collected directly from airlines. These data include frequent flyer tickets and those sold by consolidators. Taxes and fees are included in the Import Air Passenger Fares Index and excluded from the Export Air Passenger Fares Index. The Air Freight Indexes are calculated from data collected directly from airlines. These data exclude mail and passenger baggage. The scope of the service being priced is the movement of freight from airport to airport only, and does not include any ground transportation or port service. The Air Freight Indexes are presented using two definitions: Balance of Payments (which represent transactions between U.S. and foreign residents) and International (which represent transactions inbound to and outbound from the U.S.). Fact sheets specifying detailed information for each services industry are available at <http://www.bls.gov/mxp> under "MXP Publications."

**Import Indexes by Locality of Origin** -- Prices used in these indexes are a subset of the data collected for the Import Price Indexes. Beginning with January 2002, the indexes are defined by locality of origin using a nomenclature based upon the North American Industry Classification System (NAICS). Nonmanufactured goods are defined as NAICS 11 and 21 and manufactured goods are defined as NAICS 31-33.

**Revision Policy** -- To reflect the availability of late reports and corrections by respondents, monthly data may be revised in each of the three months after original publication. After three months, no further data revisions take place. So, for example, data released in the January release will be subject to revision in the releases for February, March, and April.

**Uses of the Data** -- The primary use of the indexes is to deflate trade statistics, notably the foreign trade sector of the National Income and Product Accounts constructed by the Department of Commerce. Other published indexes are useful for general market analysis. For trade in international services, Balance of Payments indexes are used for deflating National Income and Product Accounts, while International indexes are more appropriate for market analysis. Merchandise and services indexes also can be used to study U.S. competitiveness and to compute price elasticities, and the merchandise import indexes by country or region of origin are useful in terms of trade analysis.

**E-Mail Subscription** -- The U.S. Import and Export Price Indexes news release is available through an e-mail subscription service at (<http://www.bls.gov/bls/list.htm>).

**Additional Information** -- More detailed data are available on the Import/Export Price Indexes home page at (<http://www.bls.gov/mxp>). For technical assistance in using the BLS Internet site, send e-mail to ([labstat.helpdesk@bls.gov](mailto:labstat.helpdesk@bls.gov)). For Import/Export Price Index data requests, send e-mail to ([mxpinfo@bls.gov](mailto:mxpinfo@bls.gov)).

Information from this release will be made available to sensory impaired individuals upon request. Voice phone: 202-691-5200; Federal Relay Service: 1-800-877-8339.