

Transmission of material in this release is embargoed until
8:30 a.m. (EDT) Friday, October 10, 2014

USDL-14-1898

Technical information: (202) 691-7101 • MXPinfo@bls.gov • www.bls.gov/mxp
Media contact: (202) 691-5902 • PressOffice@bls.gov

U.S. IMPORT AND EXPORT PRICE INDEXES – SEPTEMBER 2014

Prices for U.S. imports fell 0.5 percent in September, after declining 0.6 percent in August and 0.3 percent in July, the U.S. Bureau of Labor Statistics reported today. Each of the 3 monthly decreases was led by falling fuel prices. The price index for U.S. exports also declined in September, decreasing 0.2 percent following a 0.5-percent drop in August.

Chart 1. One-month percent change in the Import Price Index: September 2013 – September 2014

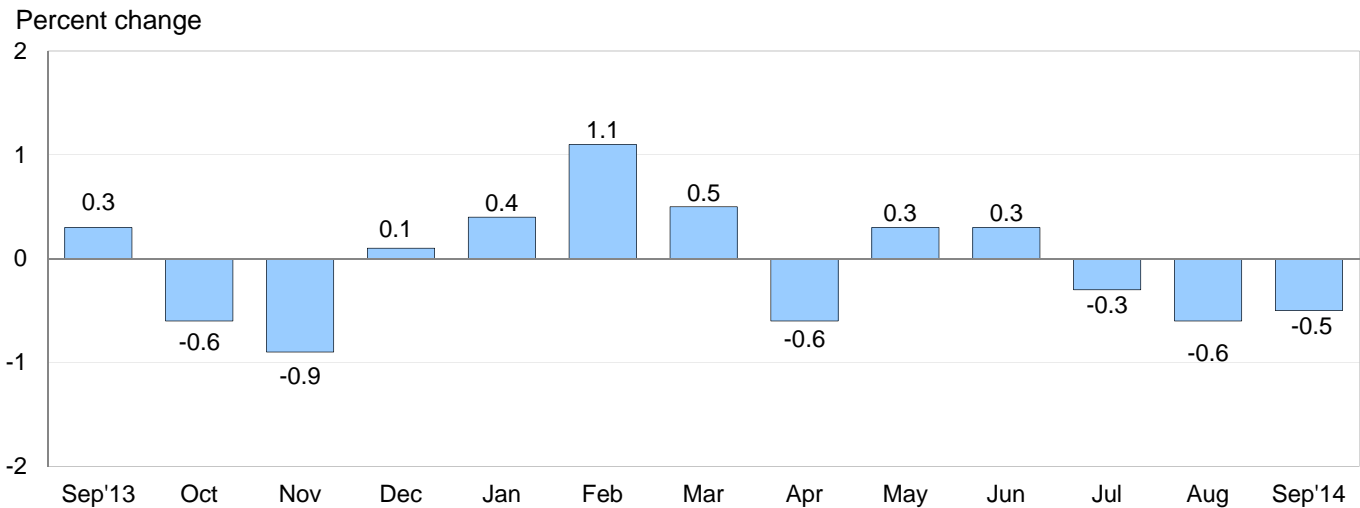
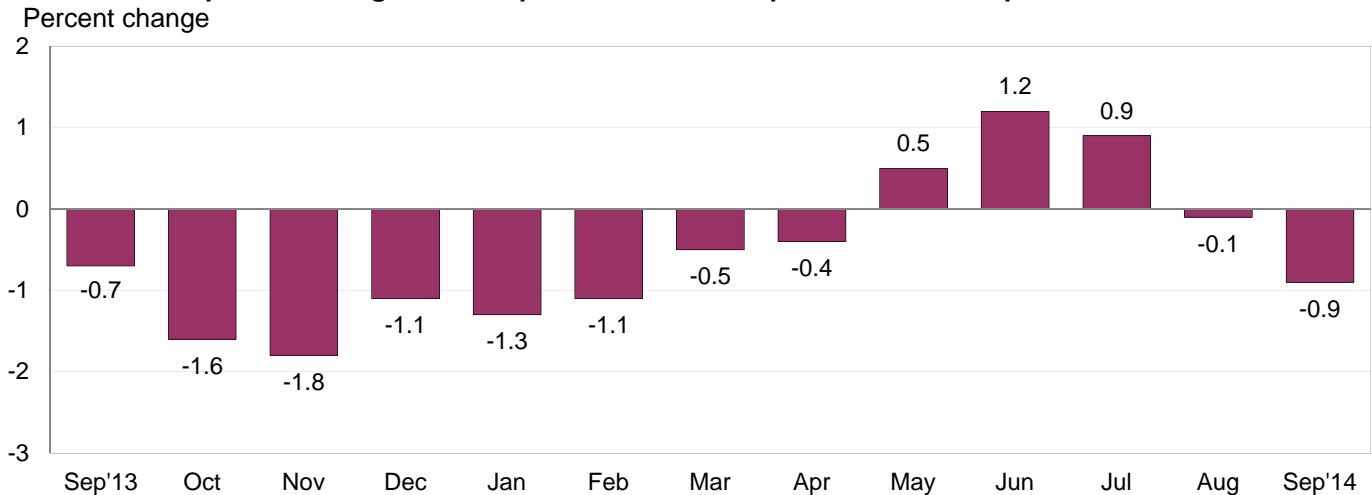


Chart 2. 12-month percent change in the Import Price Index: September 2013 – September 2014



All Imports: Overall import prices continued a 3-month downward trend in September, falling 0.5 percent. Prices for imports decreased 1.4 percent from June to September, the largest quarterly drop since the index declined 1.4 percent during the final quarter of 2013. In September, fuel prices drove the decrease, although nonfuel prices also declined. The price index for overall imports fell 0.9 percent for the year ended in September, the largest 12-month decrease since the index fell 1.1 percent in February.

Fuel Imports: Prices for import fuel decreased 2.1 percent in September following a 3.1-percent drop in August and a 1.5-percent decline in July. Lower petroleum and natural gas prices contributed to the September decline, falling 2.0 percent and 5.0 percent, respectively. Fuel prices decreased 5.8 percent over the past 12 months, the largest year-over-year decline since the index fell 8.1 percent between April 2012 and April 2013. The decrease in fuel prices over the past year was led by a 6.6-percent drop in petroleum prices which more than offset a 35.6-percent increase in natural gas prices.

All Imports Excluding Fuel: Nonfuel import prices edged down 0.1 percent in September, after recording no change the previous month. In September, lower prices for nonfuel industrial supplies and materials and automotive vehicles more than offset an increase in the price index for foods, feeds, and beverages. Despite the decline, prices for nonfuel imports rose 0.5 percent over the past year. Higher prices for consumer goods; nonfuel industrial supplies and materials; and foods, feeds, and beverages all contributed to the advance.

Table A. Percent change in Import and Export Price Indexes, selected categories

Month	IMPORTS			EXPORTS		
	All imports	Fuel imports	Nonfuel imports	All exports	Agricultural exports	Non-agricultural exports
2013						
September.....	0.3	1.0	0.1	0.4	0.6	0.3
October.....	-0.6	-3.3	0.1	-0.6	-1.3	-0.5
November.....	-0.9	-4.2	0.0	0.2	-0.2	0.1
December.....	0.1	0.7	-0.1	0.4	0.3	0.4
2014						
January.....	0.4	0.8	0.3	0.3	0.0	0.4
February.....	1.1	5.9	0.0	0.8	1.4	0.6
March.....	0.5	1.0	0.3	0.9	2.8	0.7
April.....	-0.6	-2.6	0.0	-1.0	1.5	-1.2
May.....	0.3	1.2	0.0	0.1	0.3	0.0
June.....	0.3 ^r	1.6 ^r	-0.1	-0.5	-1.9 ^r	-0.3
July.....	-0.3	-1.5 ^r	0.1 ^r	0.1	-1.8 ^r	0.3
August.....	-0.6 ^r	-3.1 ^r	0.0 ^r	-0.5	-3.0 ^r	-0.2 ^r
September.....	-0.5	-2.1	-0.1	-0.2	-0.9	-0.2
Sept. 2012 to 2013.....	-0.7	1.2	-1.2	-1.6	-6.3	-0.9
Sept. 2013 to 2014.....	-0.9	-5.8	0.5	-0.2	-2.9	0.0

r Revised

Chart 3. One-month percent change in the Export Price Index: September 2013 – September 2014

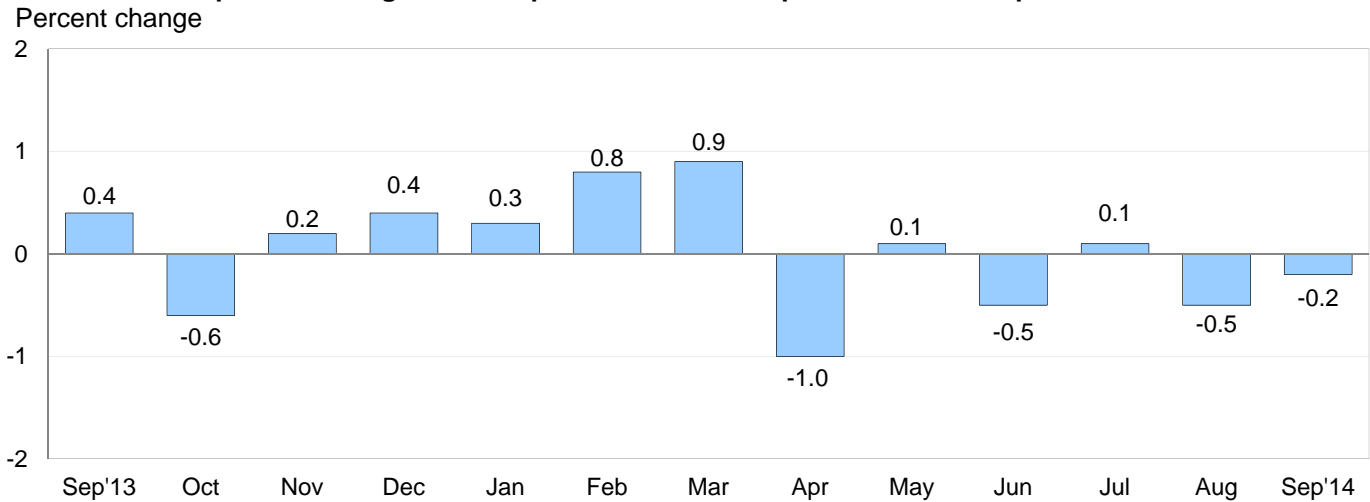
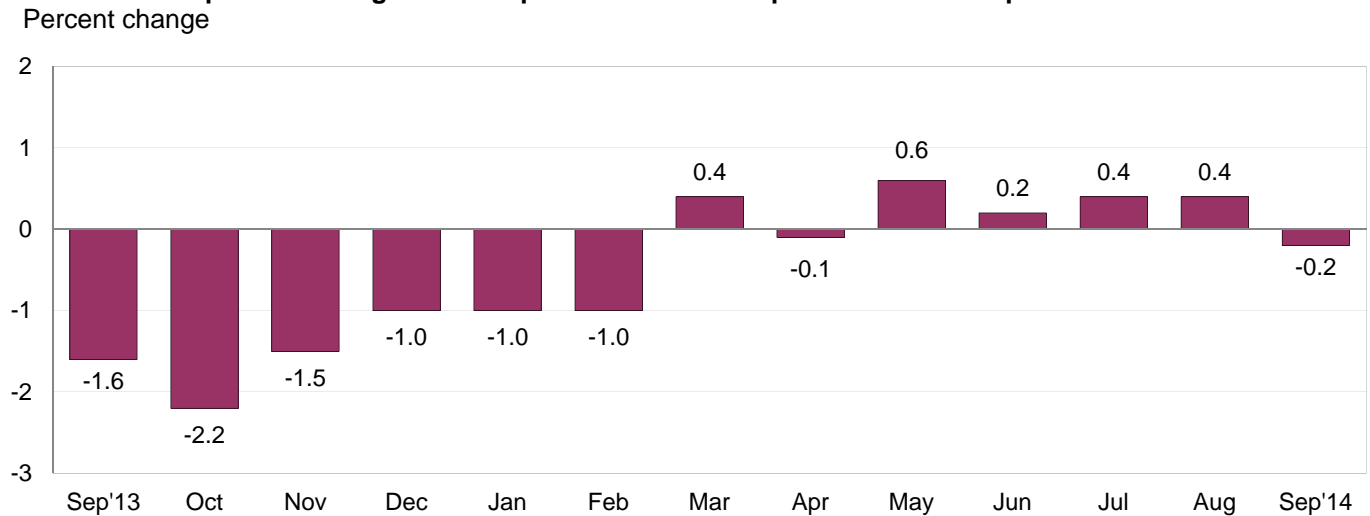


Chart 4. 12-month percent change in the Export Price Index: September 2013 – September 2014



All Exports: The price index for exports declined 0.2 percent in September, which continued an overall downward trend for the index since April. In September, lower prices for both agricultural exports and nonagricultural exports contributed to the decline. Export prices decreased 0.2 percent for the year ended in September, the first 12-month decline for the index since a 0.1-percent drop in April.

Agricultural Exports: Agricultural prices declined 0.9 percent in September following declines of 3.0 percent, 1.8 percent, and 1.9 percent over the previous 3 months. In September, the decrease was driven by a 6.2-percent drop in soybean prices, a 2.1-percent decline in meat prices, and a 3.9-percent fall in corn prices. The price index for agricultural exports fell 2.9 percent over the past year, led by lower prices for soybeans and corn.

All Exports Excluding Agriculture: Prices for nonagricultural exports declined 0.2 percent for the second consecutive month in September. Decreasing prices for nonagricultural industrial supplies and materials, consumer goods, and automotive vehicles all contributed to the drop in overall nonagricultural prices. The price index for nonagricultural prices recorded no change for the year ended in September. Each of the major finished goods categories rose over the past 12 months, while nonagricultural industrial supplies and materials prices declined.

SELECTED SEPTEMBER HIGHLIGHTS

Import Prices

Imports by Locality of Origin: Import prices from China edged down 0.1 percent in September, after recording no change in August. The September decline was led by lower prices for computers and electronic equipment. Prices for imports from Japan also decreased 0.1 percent in September, after remaining unchanged the previous month. The price indexes for imports from the European Union, Canada, and Mexico all decreased in September, falling 0.9 percent, 0.7 percent, and 0.4 percent, respectively. Lower fuel prices contributed to these declines.

Nonfuel Industrial Supplies and Materials: Prices for nonfuel industrial supplies and materials decreased 0.2 percent in September, after recording no change the previous month. In September, the decrease was driven by a 0.5-percent drop in unfinished metals prices, which was led by lower prices for gold and other precious metals.

Finished Goods: The price indexes for each of the major finished goods areas were mostly unchanged for the second consecutive month in September. Automotive vehicles prices fell 0.1 percent in September, after ticking up 0.1 percent in August. In September, prices for capital goods were unchanged for the third consecutive month and prices for consumer goods were unchanged for the second consecutive month.

Foods, Feeds, and Beverages: Foods, feeds, and beverages prices increased 0.2 percent in September following a 0.6-percent advance in August and a 1.1-percent rise in July. The September advance was driven by a 2.2-percent rise in fish and shellfish prices and a 2.4-percent increase in vegetable prices.

Transportation Services: Import air passenger fares decreased 0.3 percent in September following a 4.3-percent decline in August and a 2.8-percent drop in July. The September fall was led by a 7.2-percent decrease in Asian fares, after the 2 previous monthly declines were driven mostly by lower European fares. Despite the recent drops, the index for import air passenger fares increased 6.3 percent for the year ended in September. Import air freight prices declined 0.5 percent in September, the largest monthly drop since a 0.5-percent decline in April. Prices for import air freight rose 1.3 percent over the past year.

Export Prices

Nonagricultural Industrial Supplies and Materials: The price index for nonagricultural industrial supplies and materials declined 0.5 percent in September following a 0.7-percent drop the previous month. Falling fuel and gold prices contributed to both decreases.

Finished Goods: Capital goods prices ticked up 0.1 percent in September, after recording no change in August. In contrast, the price indexes for consumer goods and automotive vehicles each declined in September, falling 0.2 percent and 0.1 percent, respectively. Consumer goods prices were unchanged the previous month while automotive vehicles prices decreased 0.2 percent.

Transportation Services: Export air passenger fares fell 11.1 percent in September, the largest monthly drop since the index declined 12.5 percent in February. The September decrease was caused by a 23.0-percent decline in Asian fares. Despite the September drop, export air passenger fares increased 2.9 percent over the past 12 months. Export air freight prices edged down 0.1 percent in September and advanced 8.6 percent over the past year.

Import and Export Price Index data for October 2014 are scheduled for release on Friday, November 14, 2014 at 8:30 a.m. (EST).

Table 1. U.S. import price indexes and percent changes for selected categories of goods: September 2013 to September 2014

[2000=100, unless otherwise noted]

Description	End Use	Relative importance Aug. 2014 ¹	Index		Percent change				
			Aug. 2014	Sept. 2014	Annual	Monthly			
					Sept. 2013 to Sept. 2014	May 2014 to June 2014	June 2014 to July 2014	July 2014 to Aug. 2014	Aug. 2014 to Sept. 2014
All commodities		100.000	139.3	138.6	-0.9	0.3	-0.3	-0.6	-0.5
All imports excluding food and fuels (Dec. 2010=100)		75.178	102.4	102.3	0.4	0.0	0.0	0.0	-0.1
All imports excluding petroleum		81.418	115.8	115.6	0.7	-0.2	0.0	0.0	-0.2
All imports excluding fuels (Dec. 2001=100)		80.491	119.7	119.6	0.5	-0.1	0.1	0.0	-0.1
Foods, feeds, & beverages	0	5.313	179.5	179.9	2.9	-1.6	1.1	0.6	0.2
Agricultural foods, feeds & beverages, excluding distilled beverages.....	00	4.068	197.7	197.2	3.2	-1.5	1.4	0.7	-0.3
Nonagricultural foods (fish, distilled beverages).....	01	1.245	138.2	140.5	1.7	-1.9	0.2	-0.1	1.7
Industrial supplies & materials	1	32.562	248.2	244.8	-3.3	0.8	-0.7	-1.9	-1.4
Industrial supplies & materials excluding petroleum.....		13.980	161.1	160.4	2.0	-0.2	0.4	-0.7	-0.4
Industrial supplies & materials excluding fuels (Dec. 2001=100).....		13.053	181.2	180.8	0.9	-0.2	0.6	0.0	-0.2
Industrial supplies & materials, durable....		7.923	170.1	169.7	1.4	-0.1	1.1	0.0	-0.2
Industrial supplies & materials nondurable excluding petroleum.....		5.130	149.9	149.0	2.5	-0.4	-0.6	-1.6	-0.6
Fuels & lubricants.....	10	19.509	334.2	327.2	-5.8	1.6	-1.5	-3.1	-2.1
Petroleum & petroleum products.....	100	18.582	371.3	363.7	-6.6	1.7	-1.5	-2.8	-2.0
Crude.....	10000	14.225	387.1	380.8	-6.7	2.2	-1.3	-2.9	-1.6
Fuels, n.e.s.-coals & gas.....	101	0.777	133.2	128.1	29.7	-1.2	0.1	-10.2	-3.8
Gas-natural.....	10110	0.634	121.1	115.1	35.6	-1.4	0.3	-12.3	-5.0
Paper & paper base stocks.....	11	0.538	113.6	112.8	-0.4	-0.1	-0.2	0.2	-0.7
Materials associated with nondurable supplies & materials.....	12	4.661	169.0	168.8	0.3	-0.3	-0.4	-0.1	-0.1
Selected building materials.....	13	1.044	142.1	142.6	0.8	0.2	0.4	-0.1	0.4
Unfinished metals related to durable goods.....	14	3.610	244.2	243.1	1.8	-0.6	2.2	-0.3	-0.5
Finished metals related to durable goods.....	15	1.663	159.5	158.7	1.7	0.5	0.4	0.6	-0.5
Nonmetals related to durable goods.....	16	1.537	112.5	112.6	0.4	0.3	0.1	0.4	0.1
Capital goods	2	25.010	92.6	92.6	0.2	0.1	0.0	0.0	0.0
Electric generating equipment.....	20	3.033	120.6	120.6	0.9	0.1	0.4	0.1	0.0
Nonelectrical machinery.....	21	20.043	85.2	85.2	0.1	0.0	0.0	0.0	0.0
Transportation equipment excluding motor vehicles (Dec. 2001=100).....	22	1.934	135.9	136.0	0.0	0.0	0.0	0.1	0.1
Automotive vehicles, parts & engines	3	13.511	112.7	112.6	-0.7	0.0	-0.7	0.1	-0.1
Consumer goods, excluding automotives	4	23.604	108.3	108.3	0.9	0.1	-0.1	0.0	0.0
Nondurables, manufactured.....	40	11.450	118.8	118.8	2.3	0.2	0.2	0.1	0.0
Durables, manufactured.....	41	10.958	97.5	97.5	-0.7	-0.1	-0.2	-0.1	0.0
Nonmanufactured consumer goods.....	42	1.196	120.8	121.0	4.0	-0.3	0.0	-0.4	0.2

¹ Relative importance figures are based on 2012 trade values.

NOTES: Data may be revised in each of the three months after original publication.

Dash = Not available

Table 2. U.S. export price indexes and percent changes for selected categories of goods: September 2013 to September 2014

[2000=100, unless otherwise noted]

Description	End Use	Relative importance Aug. 2014 ¹	Index		Percent change				
			Aug. 2014	Sept. 2014	Annual	Monthly			
					Sept. 2013 to Sept. 2014	May 2014 to June 2014	June 2014 to July 2014	July 2014 to Aug. 2014	Aug. 2014 to Sept. 2014
All commodities.....		100.000	132.4	132.1	-0.2	-0.5	0.1	-0.5	-0.2
Agricultural commodities.....		9.717	210.9	209.1	-2.9	-1.9	-1.8	-3.0	-0.9
All exports excluding food and fuels (Dec. 2010=100).....		81.396	102.5	102.3	0.3	-0.2	0.1	0.0	-0.2
Nonagricultural commodities.....		90.282	126.7	126.4	0.0	-0.3	0.3	-0.2	-0.2
Foods, feeds, & beverages.....	0	8.986	213.4	211.5	-1.7	-1.5	-1.4	-2.7	-0.9
Agricultural foods, feeds & beverages, excluding distilled beverages.....	00	8.348	216.0	213.9	-2.2	-1.6	-1.6	-3.1	-1.0
Nonagricultural foods (fish, distilled beverages).....	01	0.638	192.8	193.0	4.7	-1.4	2.1	1.7	0.1
Industrial supplies & materials.....	1	33.235	176.6	175.7	-1.5	-1.0	0.6	-0.8	-0.5
Industrial supplies & materials, durable....		11.293	172.4	171.2	-0.8	-0.9	1.2	0.0	-0.7
Industrial supplies & materials, nondurable.....		21.943	179.7	179.1	-1.9	-1.1	0.2	-1.2	-0.3
Agricultural industrial supplies & materials.....	10	1.369	188.2	187.4	-7.3	-3.7	-2.8	-2.6	-0.4
Nonagricultural industrial supplies & materials.....		31.866	176.4	175.5	-1.2	-0.9	0.7	-0.7	-0.5
Fuels & lubricants.....	11	9.617	251.2	250.5	-4.2	-1.5	0.5	-2.8	-0.3
Nonagricultural supplies & materials excluding fuels & building materials.....	12	21.268	167.9	166.9	0.3	-0.7	1.0	0.3	-0.6
Selected building materials.....	13	0.981	122.2	121.6	-2.8	-2.0	-1.8	-1.1	-0.5
Capital goods.....	2	36.486	107.3	107.4	0.8	0.1	-0.2	0.0	0.1
Electrical generating equipment.....	20	3.715	116.2	116.3	1.0	0.2	0.2	0.1	0.1
Nonelectrical machinery.....	21	25.751	95.5	95.6	0.2	0.0	-0.2	0.0	0.1
Transportation equipment excluding motor vehicles (Dec. 2001=100).....	22	7.020	156.2	156.2	2.8	0.0	-0.1	0.1	0.0
Automotive vehicles, parts & engines.....	3	9.489	114.0	113.9	0.5	0.1	0.1	-0.2	-0.1
Consumer goods, excluding automotives.....	4	11.803	115.4	115.2	0.6	0.0	0.3	0.0	-0.2
Nondurables, manufactured.....	40	5.439	112.4	112.0	-1.7	0.0	1.3	0.0	-0.4
Durables, manufactured.....	41	4.977	111.9	111.7	0.0	0.0	-0.4	0.0	-0.2

¹ Relative importance figures are based on 2012 trade values.

NOTES: Data may be revised in each of the three months after original publication.

Dash = Not available

Table 3. U.S. import price indexes and percent changes for selected categories of goods: September 2013 to September 2014

[December 2005=100, unless otherwise noted]

Description	NAICS	Relative importance Aug. 2014 ¹	Index		Percent change				
			Aug. 2014	Sept. 2014	Annual	Monthly			
					Sept. 2013 to Sept. 2014	May 2014 to June 2014	June 2014 to July 2014	July 2014 to Aug. 2014	Aug. 2014 to Sept. 2014
Nonmanufactured articles.....		17.141	168.5	165.9	-4.2	1.0	-0.9	-2.9	-1.5
Agriculture, forestry, fishing and hunting.....	11	1.803	177.5	177.7	3.7	-5.6	2.2	-0.2	0.1
Crop production.....	111	1.371	184.0	185.0	4.6	-6.6	2.3	-0.3	0.5
Forestry and logging (Dec. 2012=100).....	113	0.134	76.2	71.5	-23.9	2.2	-2.1	-3.3	-6.2
Mining.....	21	15.338	167.2	164.3	-5.0	1.7	-1.1	-3.2	-1.7
Mining (except oil and gas) (Dec. 2006=100).....	212	0.248	123.0	123.5	-4.9	0.4	-0.3	-0.2	0.4
Manufactured articles.....		82.465	116.4	116.1	0.2	0.1	-0.2	-0.1	-0.3
Manufactured goods, part 1.....	31	10.607	126.5	126.6	1.9	0.1	0.5	0.4	0.1
Food manufacturing.....	311	3.133	162.4	162.1	2.7	0.3	0.8	0.9	-0.2
Beverage and tobacco product manufacturing.....	312	0.941	117.5	117.6	3.2	0.1	1.6	0.1	0.1
Textile mills (Dec. 2011=100).....	313	0.358	102.7	102.8	1.9	-0.1	0.5	0.2	0.1
Textile product mills.....	314	0.764	114.2	114.1	-0.5	-0.1	0.0	-0.1	-0.1
Apparel manufacturing.....	315	3.751	111.5	111.9	1.4	0.0	0.2	0.3	0.4
Leather and allied product manufacturing.....	316	1.659	123.6	123.5	1.6	0.0	0.2	0.0	-0.1
Manufactured goods, part 2.....	32	17.477	136.9	135.7	-0.4	0.2	-0.9	-0.6	-0.9
Wood product manufacturing.....	321	0.628	121.5	122.1	1.0	0.2	0.9	-0.2	0.5
Paper manufacturing.....	322	0.985	111.3	111.0	0.4	0.1	0.2	0.3	-0.3
Printing and related support activities (Dec. 2013=100).....	323	0.187	99.6	99.6	-	0.0	0.0	0.0	0.0
Petroleum and coal products manufacturing.....	324	3.964	157.0	151.4	-7.2	0.7	-2.4	-3.0	-3.6
Chemical manufacturing.....	325	8.949	137.3	137.1	2.9	0.0	-0.4	0.1	-0.1
Plastics and rubber products manufacturing.....	326	1.926	121.7	121.8	-2.2	0.0	-1.0	0.0	0.1
Nonmetallic mineral product manufacturing.....	327	0.838	130.5	130.5	0.6	0.4	-0.2	0.1	0.0
Manufactured goods, part 3.....	33	54.381	108.2	108.0	0.0	0.0	-0.1	0.1	-0.2
Primary metal manufacturing.....	331	4.242	160.9	159.6	2.0	-0.2	2.1	-0.2	-0.8
Fabricated metal product manufacturing.....	332	2.692	127.5	127.5	0.6	0.1	0.1	0.4	0.0
Machinery manufacturing.....	333	6.893	121.4	121.2	0.2	0.0	-0.2	0.0	-0.2
Computer and electronic product manufacturing.....	334	15.953	79.9	79.9	-0.9	0.0	-0.2	-0.1	0.0
Electrical equipment, appliance, and component manufacturing.....	335	4.124	119.5	119.5	0.2	0.0	0.3	0.3	0.0
Transportation equipment manufacturing.....	336	14.375	111.4	111.2	-0.4	0.0	-0.5	0.1	-0.2
Furniture and related product manufacturing.....	337	1.366	116.6	116.7	2.4	0.4	0.3	0.3	0.1
Miscellaneous manufacturing.....	339	4.737	122.4	122.2	1.1	-0.1	0.3	-0.1	-0.2

¹ Relative importance figures are based on 2012 trade values.

NOTES: Data may be revised in each of the three months after original publication.

Dash = Not available

Table 4. U.S. export price indexes and percent changes for selected categories of goods: September 2013 to September 2014

[December 2005=100, unless otherwise noted]

Description	NAICS	Relative importance Aug. 2014 ¹	Index		Percent change				
			Aug. 2014	Sept. 2014	Annual	Monthly			
					Sept. 2013 to Sept. 2014	May 2014 to June 2014	June 2014 to July 2014	July 2014 to Aug. 2014	Aug. 2014 to Sept. 2014
Nonmanufactured articles.....		6.798	150.4	148.6	-7.5	-2.3	-4.1	-4.5	-1.2
Agriculture, forestry, fishing and hunting.....	11	4.599	179.3	176.4	-11.1	-3.4	-4.3	-5.3	-1.6
Crop production.....	111	4.388	186.3	183.1	-10.9	-3.2	-4.4	-5.5	-1.7
Mining.....	21	2.199	88.8	88.3	1.7	0.1	-3.8	-2.7	-0.6
Mining (except oil and gas).....	212	1.331	98.5	98.0	-2.6	0.5	-0.8	0.6	-0.5
Manufactured articles.....		91.231	120.6	120.4	-0.2	-0.2	0.3	-0.3	-0.2
Manufactured goods, part 1.....	31	7.298	157.8	157.0	3.8	0.1	0.6	-0.6	-0.5
Food manufacturing.....	311	5.212	184.4	182.8	5.3	0.5	1.0	-0.7	-0.9
Beverage and tobacco product manufacturing.....	312	0.497	111.6	113.3	-9.2	-3.0	-2.7	-3.0	1.5
Leather and allied product manufacturing (Dec. 2013=100).....	316	0.301	109.8	110.7	-	0.1	2.1	0.4	0.8
Manufactured goods, part 2.....	32	26.163	131.4	130.9	-2.7	-0.6	0.7	-0.6	-0.4
Wood product manufacturing.....	321	0.462	124.1	125.4	3.7	-0.2	-0.2	-0.1	1.0
Paper manufacturing.....	322	1.854	126.2	125.3	2.6	-0.9	0.9	0.9	-0.7
Petroleum and coal products manufacturing.....	324	7.135	159.8	158.9	-7.2	-2.3	1.4	-2.7	-0.6
Chemical manufacturing.....	325	13.474	128.6	128.1	-1.5	0.1	0.5	0.2	-0.4
Plastics and rubber products manufacturing.....	326	2.180	119.3	119.3	-1.0	0.2	-0.4	0.4	0.0
Nonmetallic mineral product manufacturing.....	327	0.777	113.2	113.2	1.2	0.0	0.0	-0.1	0.0
Manufactured goods, part 3.....	33	57.770	112.9	112.8	0.4	-0.2	0.2	-0.1	-0.1
Primary metal manufacturing.....	331	4.748	150.3	148.6	-1.9	-1.7	3.1	-0.4	-1.1
Fabricated metal product manufacturing.....	332	2.721	128.0	128.0	-2.4	0.1	0.4	-0.2	0.0
Machinery manufacturing.....	333	11.791	124.0	124.0	1.1	0.1	-0.1	0.0	0.0
Computer and electronic product manufacturing.....	334	13.813	87.5	87.5	-1.0	0.0	-0.6	0.0	0.0
Electrical equipment, appliance, and component manufacturing.....	335	3.507	115.1	114.9	0.7	0.1	0.1	0.2	-0.2
Transportation equipment manufacturing.....	336	15.720	119.8	119.8	1.5	0.1	0.1	-0.2	0.0
Furniture and related product manufacturing (Dec. 2011=100).....	337	0.368	109.0	108.7	1.0	0.1	0.1	0.9	-0.3
Miscellaneous manufacturing.....	339	5.103	125.1	125.3	3.4	0.1	-0.4	0.2	0.2

¹ Relative importance figures are based on 2012 trade values.

NOTES: Data may be revised in each of the three months after original publication.

Dash = Not available

Table 5. U.S. import price indexes and percent changes for selected categories of goods: September 2013 to September 2014

[2000=100, unless otherwise noted]

Description	Harmonized system	Relative importance Aug. 2014 ¹	Index		Percent change				
			Aug. 2014	Sept. 2014	Annual	Monthly			
					Sept. 2013 to Sept. 2014	May 2014 to June 2014	June 2014 to July 2014	July 2014 to Aug. 2014	Aug. 2014 to Sept. 2014
Live animals; animal products.....	I	1.336	201.6	203.5	8.8	-1.7	1.7	1.2	0.9
Meat and edible meat offal.....	02	0.326	273.8	276.7	25.1	2.2	5.5	3.2	1.1
Fish and crustaceans, molluscs and other aquatic invertebrates.....	03	0.679	137.2	139.9	-1.8	-3.6	-1.1	-1.1	2.0
Vegetable products.....	II	1.641	198.5	199.4	-1.3	-6.8	1.2	-0.2	0.5
Edible vegetables, roots, and tubers.....	07	0.380	357.6	373.6	-0.4	-13.3	3.2	-2.1	4.5
Edible fruit and nuts; peel of citrus fruit or melons.....	08	0.408	101.2	99.3	-12.8	-8.5	-3.2	3.4	-1.9
Coffee, tea, mate and spices.....	09	0.356	253.3	254.2	12.9	-5.1	3.8	1.4	0.4
Animal or vegetable fats and oils (Dec. 2009=100).....	III	0.253	117.3	109.9	-4.9	0.3	0.4	0.9	-6.3
Prepared foodstuffs, beverages, and tobacco.....	IV	2.542	163.6	163.3	2.9	0.9	0.6	0.6	-0.2
Sugars and sugar confectionary (Dec. 2012=100).....	17	0.172	92.0	91.1	1.6	3.5	-2.1	1.8	-1.0
Cocoa and cocoa preparations (Dec. 2009=100).....	18	0.256	116.8	114.8	14.3	6.5	0.1	2.3	-1.7
Preparations of cereals, flour, starch or milk; bakers' wares (Dec. 2007=100).....	19	0.245	131.7	131.6	0.8	0.0	0.1	0.2	-0.1
Preparations of vegetables, fruit, nuts, or other parts of plants.....	20	0.305	168.2	168.6	2.2	0.7	-0.6	-0.2	0.2
Beverages, spirits, and vinegar.....	22	0.955	128.2	128.1	2.9	-0.1	1.7	0.2	-0.1
Mineral products.....	V	19.414	337.0	329.9	-5.7	1.6	-1.5	-3.1	-2.1
Mineral fuels, oils and residuals, bituminous substances and mineral waxes.....	27	19.153	334.1	327.0	-5.7	1.7	-1.5	-3.2	-2.1
Products of the chemical or allied industries.....	VI	8.167	152.5	152.1	2.8	-0.1	0.0	-0.1	-0.3
Inorganic chemicals.....	28	0.607	307.8	312.9	0.3	-1.2	-5.0	-0.5	1.7
Organic chemicals.....	29	2.410	136.1	135.2	0.0	-0.3	1.0	-0.2	-0.7
Pharmaceutical products.....	30	3.372	134.3	134.1	6.8	0.6	0.1	0.0	-0.1
Fertilizers (Dec. 2009=100).....	31	0.313	108.1	110.9	3.4	-2.4	1.2	-1.4	2.6
Tanning extracts; dye, pigments, varnish, paints & putty (Dec. 2011=100).....	32	0.180	105.3	105.3	11.1	-0.2	1.4	2.6	0.0
Miscellaneous chemical products.....	38	0.464	93.2	93.2	-5.8	-0.1	-0.4	0.0	0.0
Plastics and articles thereof; rubber and articles thereof.....	VII	3.135	146.7	146.5	-2.1	0.1	-0.6	-0.3	-0.1
Plastics and articles thereof.....	39	2.022	149.9	150.3	1.3	0.1	0.2	-0.1	0.3
Rubber and articles thereof.....	40	1.113	142.6	141.3	-7.7	0.2	-2.0	-0.6	-0.9
Raw hides, skins, leather, furskins, travel goods, etc.....	VIII	0.615	127.7	127.6	1.7	-0.9	0.1	-0.1	-0.1
Articles of leather; travel goods, bags, etc. of various materials.....	42	0.579	130.1	130.0	2.4	-0.2	0.1	-0.2	-0.1
Wood, wood charcoal, cork, straw, basketware and wickerwork.....	IX	0.658	147.3	147.9	0.8	0.1	0.9	-0.3	0.4
Woodpulp, recovered paper, and paper products.....	X	1.043	113.7	113.2	-0.5	-0.1	0.0	0.0	-0.4
Paper and paperboard; articles of paper pulp, paper or paperboard.....	48	0.687	107.2	106.9	-0.8	0.0	0.1	-0.1	-0.3
Printed matter (Dec. 2013=100).....	49	0.194	99.8	99.8	-	0.3	0.0	0.0	0.0
Textile and textile articles.....	XI	4.742	114.5	114.8	0.8	-0.1	0.2	0.2	0.3
Articles of apparel and clothing accessories, knitted or crocheted.....	61	1.843	102.9	103.6	0.5	-0.1	0.0	0.0	0.7

See footnotes at end of table.

Table 5. U.S. import price indexes and percent changes for selected categories of goods: September 2013 to September 2014 — Continued
 [2000=100, unless otherwise noted]

Description	Harmoni- zied system	Relative importance Aug. 2014 ¹	Index		Percent change				
			Aug. 2014	Sept. 2014	Annual	Monthly			
					Sept. 2013 to Sept. 2014	May 2014 to June 2014	June 2014 to July 2014	July 2014 to Aug. 2014	Aug. 2014 to Sept. 2014
Articles of apparel and clothing accessories, not knitted or crocheted.....	62	1.732	120.2	120.3	1.7	0.0	0.3	0.6	0.1
Made-up or worn textile articles.....	63	0.550	107.9	107.6	-0.3	0.1	0.0	-0.1	-0.3
Headgear, umbrellas, artificial flowers, etc...	XII	1.333	122.2	122.1	1.0	0.0	0.2	0.1	-0.1
Footwear and parts of such articles.....	64	1.151	121.7	121.6	1.3	0.0	0.1	0.2	-0.1
Stone, plaster, cement, asbestos, ceramics, glass etc.....	XIII	0.775	133.1	133.2	0.4	0.4	-0.2	0.1	0.1
Articles of stone, plaster, cement, asbestos, or mica (Dec. 2001=100).....	68	0.255	125.9	126.2	0.0	0.9	-0.6	0.2	0.2
Ceramic products.....	69	0.239	141.8	141.6	0.5	0.4	0.0	0.1	-0.1
Glass and glassware.....	70	0.281	129.6	129.5	0.4	0.0	0.0	0.0	-0.1
Pearls, stones, precious metals, imitation jewelry, and coins.....	XIV	2.682	184.2	181.9	-0.8	-1.3	3.1	-0.9	-1.2
Base metals and articles of base metals. ...	XV	5.401	184.4	184.6	3.0	0.4	0.3	0.4	0.1
Iron and steel.....	72	1.274	222.7	223.9	4.8	-0.2	0.5	-0.4	0.5
Articles of iron or steel.....	73	1.692	155.0	154.9	1.0	0.4	0.4	0.3	-0.1
Copper and articles thereof.....	74	0.445	333.6	327.7	-1.3	-0.5	-0.7	2.7	-1.8
Aluminum and articles thereof.....	76	0.742	143.9	144.8	6.7	2.2	0.6	1.6	0.6
Tools, implements, cutlery, spoons and forks, of base metal; parts thereof.....	82	0.393	129.1	129.0	-0.2	-0.1	0.0	0.0	-0.1
Miscellaneous articles of base metal.....	83	0.450	138.4	138.6	2.4	0.0	0.1	1.1	0.1
Machinery, electrical equipment, TV image and sound recorders, parts, etc.....	XVI	27.130	84.5	84.4	-0.2	0.0	-0.1	0.0	-0.1
Machinery and mechanical appliances; parts thereof.....	84	14.098	89.5	89.4	0.0	0.0	-0.2	0.0	-0.1
Electrical machinery and equip, sound and TV recorders & reproducers, parts.....	85	13.032	79.6	79.7	-0.4	0.0	-0.3	0.0	0.1
Vehicles, aircraft, vessels and associated transport equipment.....	XVII	12.030	115.4	115.3	-0.6	0.0	-0.6	0.0	-0.1
Motor vehicles and their parts.....	87	11.013	114.1	114.0	-0.6	0.0	-0.7	0.0	-0.1
Aircraft, spacecraft, and parts thereof (Dec. 2002=100).....	88	0.917	120.1	120.2	-0.1	0.1	0.1	0.1	0.1
Optical, photo, measuring, medical & musical instruments; & timepieces.....	XVIII	3.447	104.9	104.6	0.5	0.2	-0.2	0.2	-0.3
Optical, photographic, measuring and medical instruments.....	90	3.148	101.7	101.4	0.4	0.2	-0.2	0.2	-0.3
Clocks and watches and parts thereof.....	91	0.241	143.4	143.1	1.4	-0.1	-0.4	0.1	-0.2
Miscellaneous manufactured articles.....	XX	3.574	114.0	114.1	1.0	0.1	0.4	0.1	0.1
Furniture & stuffed furnishings; lamps & lighting fittings, nesoi; prefab bldgs.....	94	2.085	118.5	118.6	1.5	0.1	0.6	0.1	0.1
Toys, games and sports equipment; parts and accessories thereof.....	95	1.257	106.0	106.1	0.9	-0.1	0.2	0.1	0.1
Miscellaneous manufactured articles.....	96	0.232	135.0	134.8	-2.7	0.2	-0.3	0.0	-0.1

¹ Relative importance figures are based on 2012 trade values.

NOTES: Data may be revised in each of the three months after original publication.

Dash = Not available

Table 6. U.S. export price indexes and percent changes for selected categories of goods: September 2013 to September 2014

[2000=100, unless otherwise noted]

Description	Harmoni- zied system	Relative importance Aug. 2014 ¹	Index		Percent change				
			Aug. 2014	Sept. 2014	Annual	Monthly			
					Sept. 2013 to Sept. 2014	May 2014 to June 2014	June 2014 to July 2014	July 2014 to Aug. 2014	Aug. 2014 to Sept. 2014
Live animals; animal products.....	I	2.301	253.3	254.2	15.7	-1.2	4.0	0.6	0.4
Meat & edible meat offal (Dec. 2006=100)...	02	1.391	200.2	194.9	16.0	1.2	5.3	0.6	-2.6
Fish and crustaceans, molluscs and other aquatic invertebrates.....	03	0.372	212.1	213.8	10.0	-1.6	3.3	2.6	0.8
Vegetable products.....	II	4.300	229.0	226.8	-9.2	-2.9	-3.9	-5.6	-1.0
Edible fruit and nuts; peel of citrus fruit or melons.....	08	1.054	163.6	174.6	10.5	-4.8	-3.5	-2.6	6.7
Cereals.....	10	1.029	225.7	219.6	-16.8	-8.7	-3.9	-4.8	-2.7
Oilseeds and misc. grains, seeds, fruits, plants, straw and fodder.....	12	1.789	258.3	245.5	-12.9	1.1	-4.6	-7.9	-5.0
Animal or vegetable fats and oils (Dec. 2009=100).....	III	0.247	112.4	107.3	-12.3	-1.0	-1.3	-2.0	-4.5
Prepared foodstuffs, beverages, and tobacco.....	IV	2.864	163.9	164.0	-1.8	-0.2	-1.4	-2.0	0.1
Preparations of vegetables, fruit, nuts or other parts of plants (Dec. 2009=100).....	20	0.351	118.1	117.7	4.3	0.0	-0.8	0.0	-0.3
Beverages, spirits, and vinegar (Dec. 2008=100).....	22	0.485	110.9	110.7	-2.1	-0.8	0.1	0.1	-0.2
Residues and waste from the food industries; prepared animal feed.....	23	0.670	244.0	245.5	-9.0	-0.8	-5.4	-7.7	0.6
Mineral products.....	V	9.352	289.1	287.6	-5.7	-1.7	0.3	-2.6	-0.5
Ores, slag and ash (Dec. 2012=100).....	26	0.464	99.2	98.9	9.8	1.6	1.7	2.7	-0.3
Mineral fuels, oils and residuals, bituminous substances and mineral waxes.....	27	8.705	284.9	283.4	-6.6	-1.9	0.3	-2.9	-0.5
Products of the chemical or allied industries.....	VI	10.910	150.5	150.1	-1.6	0.5	0.6	-0.1	-0.3
Inorganic chemicals.....	28	0.875	170.7	171.8	-4.8	-0.8	-0.6	0.0	0.6
Organic chemicals.....	29	3.252	169.4	167.7	1.3	0.3	4.0	-0.1	-1.0
Pharmaceutical products.....	30	2.594	116.0	115.5	-4.1	0.3	0.2	0.0	-0.4
Fertilizers (Dec. 2012=100).....	31	0.311	86.5	86.4	-1.9	-0.5	1.4	0.7	-0.1
Essential oils and resinoids; perfumery cosmetic or toilet preparations.....	33	0.710	133.6	133.1	-1.5	-0.1	0.1	0.0	-0.4
Soap; lubricants; waxes, polishing or scouring products; candles, pastes.....	34	0.450	116.4	116.1	-4.0	0.4	-3.6	0.2	-0.3
Miscellaneous chemical products.....	38	1.745	152.0	153.4	-0.7	2.3	-2.6	-0.6	0.9
Plastics and articles thereof; rubber and articles thereof.....	VII	5.245	151.3	151.1	1.4	-0.1	-0.1	0.7	-0.1
Plastics and articles thereof.....	39	4.263	146.1	146.2	2.0	-0.1	0.0	0.6	0.1
Rubber and articles thereof.....	40	0.982	173.1	171.8	-1.4	-0.2	-0.7	0.6	-0.8
Raw hides, skins, leather, furskins, travel goods, etc.....	VIII	0.462	163.1	164.8	16.1	0.3	1.4	1.0	1.0
Woodpulp, recovered paper, and paper products.....	X	2.315	126.4	124.9	2.0	-1.0	1.3	0.8	-1.2
Woodpulp and recovered paper.....	47	0.698	131.9	129.8	2.9	-2.8	2.6	1.4	-1.6
Paper and paperboard; articles of paper pulp, paper or paperboard.....	48	1.190	125.5	123.9	2.4	-0.1	1.1	0.6	-1.3
Textile and textile articles.....	XI	1.861	129.6	128.8	-2.7	-2.1	-0.9	-1.3	-0.6
Cotton, including yarns and woven fabrics thereof.....	52	0.550	134.6	131.4	-11.9	-6.6	-3.2	-4.0	-2.4
Stone, plaster, cement, asbestos, ceramics, glass etc.....	XIII	0.747	120.1	120.1	1.5	0.0	0.0	-0.1	0.0
Glass and glassware.....	70	0.383	98.6	98.6	1.1	-0.1	0.0	-0.1	0.0

See footnotes at end of table.

Table 6. U.S. export price indexes and percent changes for selected categories of goods: September 2013 to September 2014 — Continued
 [2000=100, unless otherwise noted]

Description	Harmonized system	Relative importance Aug. 2014 ¹	Index		Percent change				
			Aug. 2014	Sept. 2014	Annual	Monthly			
					Sept. 2013 to Sept. 2014	May 2014 to June 2014	June 2014 to July 2014	July 2014 to Aug. 2014	Aug. 2014 to Sept. 2014
Pearls, stones, precious metals, imitation jewelry, and coins.....	XIV	4.479	251.3	248.1	-0.1	-2.0	2.7	-0.4	-1.3
Base metals and articles of base metals. ...	XV	5.352	165.0	164.3	0.1	-0.1	1.0	0.1	-0.4
Iron and steel.....	72	1.432	191.5	189.1	3.0	-0.7	-0.8	0.7	-1.3
Copper and articles thereof.....	74	0.608	229.7	226.5	-3.6	0.5	3.1	-0.9	-1.4
Aluminum and articles thereof.....	76	0.877	126.1	126.0	3.9	0.3	3.5	1.7	-0.1
Tools, implements, cutlery, spoons and forks, of base metal; parts thereof.....	82	0.401	138.0	136.3	2.5	-0.1	0.6	-1.0	-1.2
Miscellaneous articles of base metal.....	83	0.313	147.1	147.1	-0.1	0.0	0.0	0.0	0.0
Machinery, electrical equipment, TV image and sound recorders, parts, etc.....	XVI	27.888	97.3	97.3	0.2	0.0	-0.3	0.0	0.0
Machinery and mechanical appliances; parts thereof.....	84	16.855	112.6	112.7	1.1	-0.1	-0.2	-0.1	0.1
Electrical machinery and equipment and parts and accessories thereof.....	85	11.033	80.7	80.7	-1.1	0.0	-0.5	0.1	0.0
Vehicles, aircraft, vessels and associated transport equipment.....	XVII	13.516	130.0	130.0	1.3	0.1	0.1	-0.1	0.0
Motor vehicles and their parts.....	87	8.794	115.1	115.1	1.1	0.1	0.1	-0.2	0.0
Optical, photo, measuring, medical & musical instruments; & timepieces.....	XVIII	6.050	108.0	108.1	0.9	0.0	-0.1	0.4	0.1
Miscellaneous manufactured articles.....	XX	1.427	111.0	110.6	0.3	0.0	0.0	0.5	-0.4
Furniture; stuffed furnishings; lamps and lighting fittings nesoi;.....	94	0.795	123.0	122.1	0.5	0.1	0.0	1.0	-0.7
Toys, games and sports equipment; parts and accessories thereof.....	95	0.479	89.5	89.5	0.1	0.0	0.0	0.0	0.0

¹ Relative importance figures are based on 2012 trade values.

NOTES: Data may be revised in each of the three months after original publication.

Dash = Not available

Table 7. U.S. import price indexes and percent changes by locality of origin: September 2013 to September 2014

[2000=100, unless otherwise noted]

Description	Relative importance Aug. 2014 ¹	Index		Percent change				
		Aug. 2014	Sept. 2014	Annual	Monthly			
				Sept. 2013 to Sept. 2014	May 2014 to June 2014	June 2014 to July 2014	July 2014 to Aug. 2014	Aug. 2014 to Sept. 2014
Industrialized Countries²	100.000	133.4	132.5	0.4	0.1	-0.1	-0.1	-0.7
Nonmanufactured articles.....	12.677	246.0	242.0	-1.6	1.5	-1.9	-2.8	-1.6
Manufactured articles.....	86.761	124.4	123.6	0.6	0.0	0.1	0.2	-0.6
Other Countries³	100.000	137.7	137.2	-1.6	0.1	-0.3	-0.5	-0.4
Nonmanufactured articles.....	19.931	344.3	339.2	-5.5	1.0	-0.7	-1.9	-1.5
Manufactured articles.....	79.824	109.5	109.4	-0.5	-0.1	-0.3	-0.1	-0.1
Canada	100.000	154.5	153.4	-0.4	0.7	-0.4	-0.8	-0.7
Nonmanufactured articles.....	32.756	237.9	234.3	-0.7	1.5	-2.1	-2.9	-1.5
Manufactured articles.....	66.384	136.2	135.7	-0.5	0.4	0.4	0.3	-0.4
European Union⁴	100.000	139.4	138.1	1.8	0.1	0.1	0.1	-0.9
Manufactured articles.....	99.305	135.5	134.3	1.8	0.1	0.1	0.1	-0.9
France (Dec. 2003=100)	100.000	123.1	122.9	0.9	0.3	-0.2	0.0	-0.2
Germany (Dec. 2003=100)	100.000	119.0	118.5	2.0	0.4	-0.8	0.0	-0.4
United Kingdom (Dec. 2003=100)	100.000	132.1	131.8	2.6	0.2	0.7	-0.1	-0.2
Latin America⁵	100.000	170.7	169.7	-3.4	-0.2	-0.6	-0.9	-0.6
Nonmanufactured articles.....	28.498	357.3	352.6	-8.5	0.7	-1.8	-3.2	-1.3
Manufactured articles.....	71.094	130.1	129.7	-0.8	-0.5	-0.2	0.1	-0.3
Mexico (Dec. 2003=100)	100.000	141.2	140.7	-2.2	-0.1	-0.5	-0.1	-0.4
Nonmanufactured articles (Dec. 2008=100).....	16.490	191.9	189.3	-8.7	-0.2	-2.9	-1.9	-1.4
Manufactured articles (Dec. 2008=100).....	83.258	92.9	92.7	-0.7	0.0	0.0	0.2	-0.2
Pacific Rim (Dec. 2003=100)⁶	100.000	102.5	102.4	-0.7	0.0	-0.2	0.0	-0.1
China (Dec. 2003=100)	100.000	103.9	103.8	0.1	0.0	-0.2	0.0	-0.1
Japan	100.000	98.6	98.5	-1.4	0.0	-0.3	0.0	-0.1
Asian NICs⁷	100.000	89.2	89.3	-1.4	0.0	0.0	0.3	0.1
ASEAN (Dec. 2003=100)⁸	100.000	103.7	103.3	-1.4	-0.3	-0.2	0.0	-0.4
Asia Near East (Dec. 2003=100)⁹	100.000	271.4	268.9	0.5	0.1	2.1	0.0	-0.9

¹ Relative importance figures are based on 2012 trade values.

² Western Europe, Canada, Japan, Australia, New Zealand and South Africa.

³ Eastern Europe, Latin America, OPEC countries, and other countries in Asia, Africa and the Western Hemisphere.

⁴ European Union countries.

⁵ Mexico, Central America, South America and the Caribbean.

⁶ China, Japan, Australia, Brunei, Indonesia, Macao, Malaysia, New Zealand, Papua New Guinea, Philippines and the Asian Newly Industrialized Countries.

⁷ Asian Newly Industrialized Countries - Hong Kong, Singapore, South Korea and Taiwan.

⁸ Association of Southeast Asian Nations - Brunei, Cambodia, Indonesia, Laos, Malaysia, Myanmar, Philippines, Singapore, Thailand and Vietnam.

⁹ Bahrain, Iran, Iraq, Israel, Jordan, Kuwait, Lebanon, Oman, Qatar, Saudi Arabia, Syria, United Arab Emirates and Yemen.

NOTES: Data may be revised in each of the three months after original publication.

Regions are not mutually exclusive.

Dash = Not available

Table 8. U.S. international price indexes and percent changes for selected transportation services: September 2013 to September 2014

[2000=100, unless otherwise noted]

Description	Relative importance Aug. 2014 ¹	Index		Percent change				
		Aug. 2014	Sept. 2014	Annual Sept. 2013 to Sept. 2014	Monthly			
					May 2014 to June 2014	June 2014 to July 2014	July 2014 to Aug. 2014	Aug. 2014 to Sept. 2014
Air Freight								
Import Air Freight	100.000	175.9	175.1	1.3	0.1	-0.3	0.4	-0.5
Europe (Dec. 2003=100).....	28.418	179.4	176.6	5.7	0.3	-0.6	-0.2	-1.6
Asia.....	68.421	152.0	152.0	0.1	-0.1	-0.2	0.7	0.0
Export Air Freight	100.000	160.1	160.0	8.6	0.0	-0.2	0.1	-0.1
Europe (Dec. 2006=100).....	37.056	143.3	143.2	8.1	0.0	-0.1	0.2	-0.1
Inbound Air Freight	100.000	165.2	164.5	1.9	0.1	-0.2	0.1	-0.4
Europe (Dec. 2003=100).....	27.376	159.0	157.0	4.9	0.2	-0.3	-0.2	-1.3
Asia.....	63.058	147.7	147.5	1.0	0.0	-0.1	0.2	-0.1
Outbound Air Freight	100.000	153.1	153.1	5.0	0.1	0.0	0.0	0.0
Europe (Dec. 2003=100).....	33.470	171.9	171.9	7.2	0.2	0.0	0.0	0.0
Asia.....	47.144	145.2	145.1	4.4	0.1	0.0	0.0	-0.1
Air Passenger Fares								
Import Air Passenger Fares	100.000	193.9	193.3	6.3	6.9	-2.8	-4.3	-0.3
Europe.....	41.299	208.2	215.5	2.0	8.7	-5.3	-6.9	3.5
Asia.....	25.062	159.0	147.6	0.9	5.8	-1.9	-3.2	-7.2
Latin America/Caribbean.....	9.045	173.4	163.8	0.9	0.5	1.7	0.8	-5.5
Export Air Passenger Fares	100.000	214.7	190.9	2.9	4.8	3.6	5.5	-11.1
Europe.....	25.061	238.8	233.3	4.1	13.2	-0.6	-8.8	-2.3
Asia.....	32.544	204.5	157.5	1.5	1.4	1.9	19.2	-23.0
Latin America/Caribbean.....	16.381	192.7	189.2	1.5	1.3	-4.8	2.8	-1.8

¹ Relative importance figures are based on 2012 trade values.

NOTES: Data may be revised in each of the three months after original publication.

Dash = Not available

TECHNICAL NOTE

Import and Export Merchandise and Services Price Indexes -- All indexes use a modified Laspeyres formula and are not seasonally adjusted. Price indexes are reweighted annually, with a two-year lag in the weights. Published series use a base year of 2000=100 where possible. More detailed index series and additional information may be obtained at <http://www.bls.gov/mxp>, or by calling (202) 691-7101.

Merchandise Goods Classification Systems -- The merchandise price indexes are published using three classification systems. Items are classified by end use according to the Bureau of Economic Analysis Classification System, by industry according to the North American Industry Classification System (NAICS), and by product category according to the Harmonized System (HS). While classification by end use and product category are self-explanatory, some notes are in order for classifying items by industry. In the NAICS imports and exports tables, items are classified by output industry, not input industry. As an example, NAICS import index 326 (plastics and rubber products manufacturing) include outputs such as manufactured plastic rather than inputs such as petroleum. The NAICS classification structure also matches the classification system used by the PPI (Producer Price Index) to produce the NAICS primary products indexes.

Import Price Indexes -- Products have been classified by the Harmonized Tariff Schedule of the United States Annotated (TSUSA). Import prices are based on U.S. dollar prices paid by the U.S. importer. The prices are generally either "free on board" (f.o.b.) foreign port or "cost, insurance, and freight" (c.i.f.) U.S. port transaction prices, depending on the practices of the individual industry. The index for crude petroleum is calculated from data collected by the U.S. Department of Energy.

Export Price Indexes -- Products have been classified by the Harmonized Schedule B classification system of the U.S. Bureau of the Census. The prices used are generally either "free alongside ship" (f.a.s.) factory or "free on board" (f.o.b.) transaction prices, depending on the practices of the individual industry. Prices used in the grain index, excluding rice, are obtained from the U.S. Department of Agriculture.

Services Price Indexes -- Starting in September 2008 the Import Air Passenger Fares Indexes represent changes in the average revenue per passenger received by foreign carriers from U.S. residents and are calculated from data obtained from an airline consulting service. These data include tickets sold by travel agencies and travel websites. Tickets sold directly by the airlines are excluded, as are frequent flyer tickets generally. Starting in January 2008 the Export Air Passenger Fares Indexes represent changes in the average revenue per passenger received by U.S. carriers from foreign residents and are calculated from data collected directly from airlines. These data include frequent flyer tickets and those sold by consolidators. Taxes and fees are included in the Import Air Passenger Fares Index and excluded from the Export Air Passenger Fares Index. The Air Freight Indexes are calculated from data collected directly from airlines. These data exclude mail and passenger baggage. The scope of the service being priced is the movement of freight from airport to airport only, and does not include any ground transportation or port service. The Air Freight Indexes are presented using two definitions: Balance of Payments (which represent transactions between U.S. and foreign residents) and International (which represent transactions inbound to and outbound from the U.S.). Fact sheets specifying detailed information for each services industry are available at <http://www.bls.gov/mxp> under "MXP Publications."

Import Indexes by Locality of Origin -- Prices used in these indexes are a subset of the data collected for the Import Price Indexes. Beginning with January 2002, the indexes are defined by locality of origin using a nomenclature based upon the North American Industry Classification System (NAICS). Nonmanufactured goods are defined as NAICS 11 and 21 and manufactured goods are defined as NAICS 31-33.

Revision Policy -- To reflect the availability of late reports and corrections by respondents, monthly data may be revised in each of the three months after original publication. After three months, no further data revisions take place. So, for example, data released in the January release will be subject to revision in the releases for February, March, and April.

Uses of the Data -- The primary use of the indexes is to deflate trade statistics, notably the foreign trade sector of the National Income and Product Accounts constructed by the Department of Commerce. Other published indexes are useful for general market analysis. For trade in international services, Balance of Payments indexes are used for deflating National Income and Product Accounts, while International indexes are more appropriate for market analysis. Merchandise and services indexes also can be used to study U.S. competitiveness and to compute price elasticities, and the merchandise import indexes by country or region of origin are useful in terms of trade analysis.

E-Mail Subscription -- The U.S. Import and Export Price Indexes news release is available through an e-mail subscription service at (<http://www.bls.gov/bls/list.htm>).

Additional Information -- More detailed data are available on the Import/Export Price Indexes home page at (<http://www.bls.gov/mxp>). For technical assistance in using the BLS Internet site, send e-mail to (labstat.helpdesk@bls.gov). For Import/Export Price Index data requests, send e-mail to (mxpinfo@bls.gov).

Information from this release will be made available to sensory impaired individuals upon request. Voice phone: 202-691-5200; Federal Relay Service: 1-800-877-8339.