



**Transmission of material in this release is embargoed until
 8:30 a.m. (EST) Thursday, November 16, 2017**

USDL-17-1505

Technical information: (202) 691-7101 • MXPinfo@bls.gov • www.bls.gov/mxp
 Media contact: (202) 691-5902 • PressOffice@bls.gov

U.S. IMPORT AND EXPORT PRICE INDEXES – OCTOBER 2017

U.S. import prices advanced 0.2 percent in October, the U.S. Bureau of Labor Statistics reported today, after increasing 0.8 percent in September. U.S. export prices recorded no change in October, after increasing 0.7 percent in September.

Chart 1. One-month percent change in the Import Price Index: October 2016 – October 2017

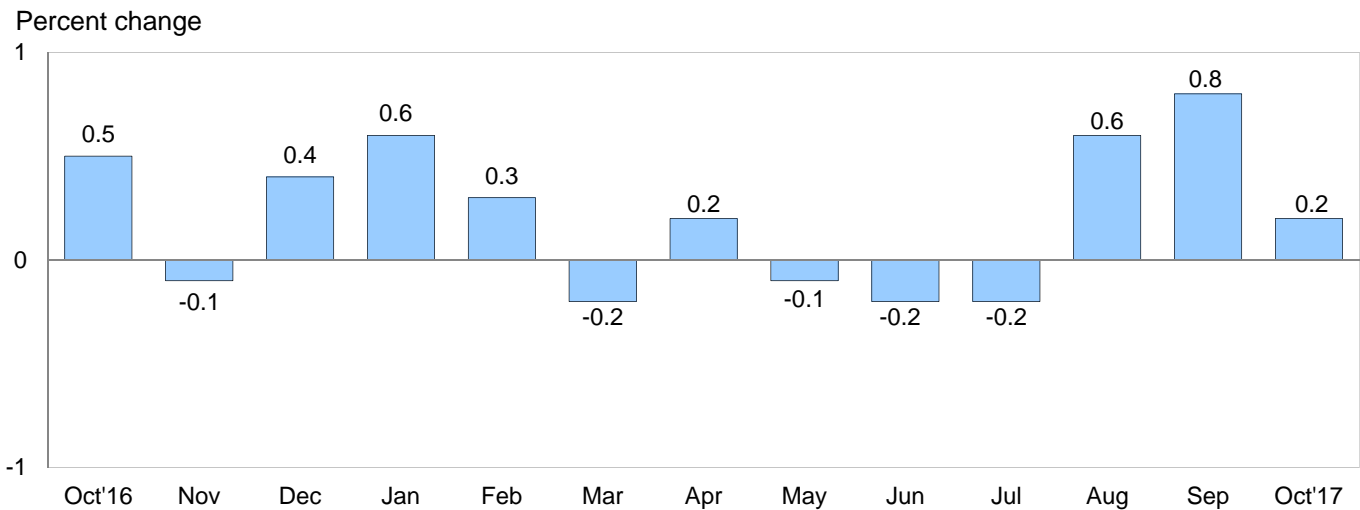
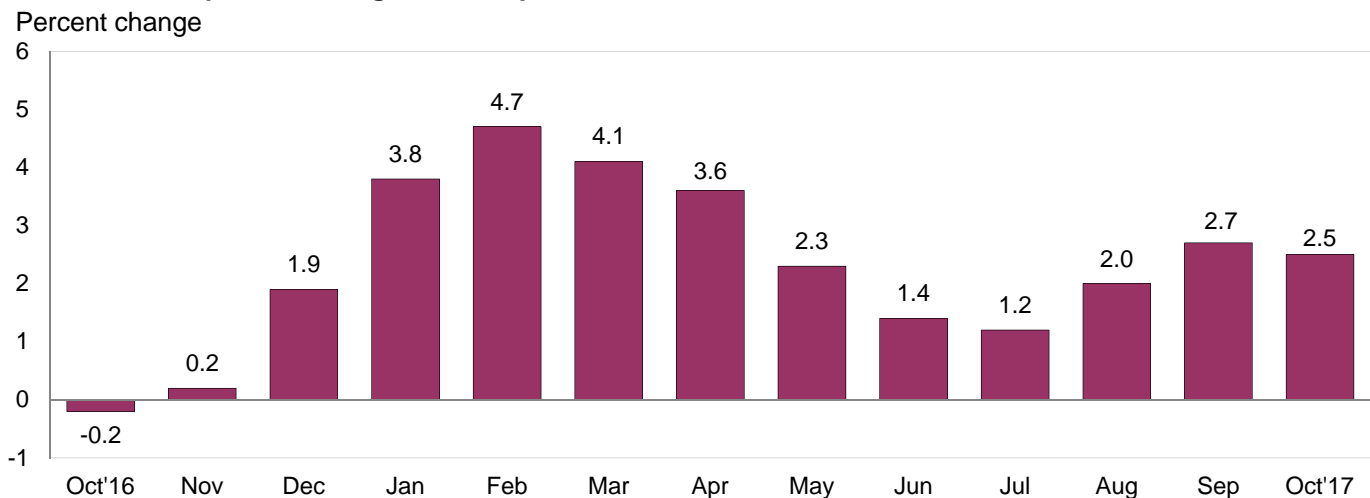


Chart 2. 12-month percent change in the Import Price Index: October 2016 – October 2017



Hurricane Maria: Hurricane Maria had an impact on the collection of the import and export price index data from Puerto Rico for October, but no change in the estimation procedures. For more information on the impact, please see <https://www.bls.gov/bls/hurricanes-harvey-irma-maria.htm>.

All Imports: Import prices increased 0.2 percent in October, after rising 0.8 percent in September. The price index for all imports rose 1.6 percent over the past 3 months. Higher prices for fuel and nonfuel imports contributed to the overall rise in import prices for October. U.S. import prices increased 2.5 percent for the year ended in October.

Fuel Imports: The price index for fuel imports advanced 1.4 percent in October following a 5.5-percent rise in September. Fuel import prices increased 11.1 percent over the past 3 months. The October increase was driven by higher petroleum prices which advanced 1.7 percent, more than offsetting a 6.7-percent drop in natural gas prices. Fuel import prices rose 13.2 percent over the past 12 months; petroleum prices were the primary contributor, advancing 14.9 percent. Import prices for natural gas fell 18.2 percent over the past year.

All Imports Excluding Fuel: Prices for nonfuel imports rose 0.2 percent in October following a 0.3-percent advance in September. The increase in October was driven by nonfuel industrial supplies and materials prices which advanced 0.9 percent; higher prices for capital goods also contributed to the overall increase. Import prices for automotive vehicles; consumer goods; and foods, feeds, and beverages all declined in October limiting the monthly advance. The price index for nonfuel imports rose 1.4 percent over the past 12 months, the largest over-the-year increase since a 2.0-percent advance for the year ended March 2012.

Table A. Percent change in Import and Export Price Indexes, selected categories

| Month | IMPORTS | | | EXPORTS | | |
|------------------------|-------------------|-------------------|-----------------|------------------|----------------------|--------------------------|
| | All imports | Fuel imports | Nonfuel imports | All exports | Agricultural exports | Non-agricultural exports |
| 2016 | | | | | | |
| October..... | 0.5 | 6.6 | 0.0 | 0.2 | 0.5 | 0.2 |
| November..... | -0.1 | -1.1 | -0.1 | 0.1 | 0.7 | 0.0 |
| December..... | 0.4 | 5.8 | 0.0 | 0.4 | -0.2 | 0.4 |
| 2017 | | | | | | |
| January..... | 0.6 | 6.1 | -0.1 | 0.2 | 0.4 | 0.2 |
| February..... | 0.3 | 0.3 | 0.3 | 0.3 | 1.4 | 0.3 |
| March..... | -0.2 | -3.0 | 0.2 | 0.1 | 1.1 | 0.0 |
| April..... | 0.2 | -0.4 | 0.3 | 0.2 | 0.1 | 0.3 |
| May..... | -0.1 | -0.9 | 0.1 | -0.6 | -1.6 | -0.4 |
| June..... | -0.2 | -3.6 | 0.1 | -0.1 | -1.4 | 0.0 |
| July..... | -0.2 ^r | -1.0 ^r | -0.1 | 0.5 | 1.8 ^r | 0.3 |
| August..... | 0.6 | 3.9 ^r | 0.3 | 0.7 | 0.1 | 0.8 |
| September..... | 0.8 ^r | 5.5 ^r | 0.3 | 0.7 ^r | -0.7 | 0.9 ^r |
| October..... | 0.2 | 1.4 | 0.2 | 0.0 | 1.9 | -0.3 |
| Oct. 2015 to 2016..... | -0.2 | 3.1 | -0.3 | -1.1 | -2.7 | -0.8 |
| Oct. 2016 to 2017..... | 2.5 | 13.2 | 1.4 | 2.7 | 3.5 | 2.5 |

r Revised

Chart 3. One-month percent change in the Export Price Index: October 2016 – October 2017

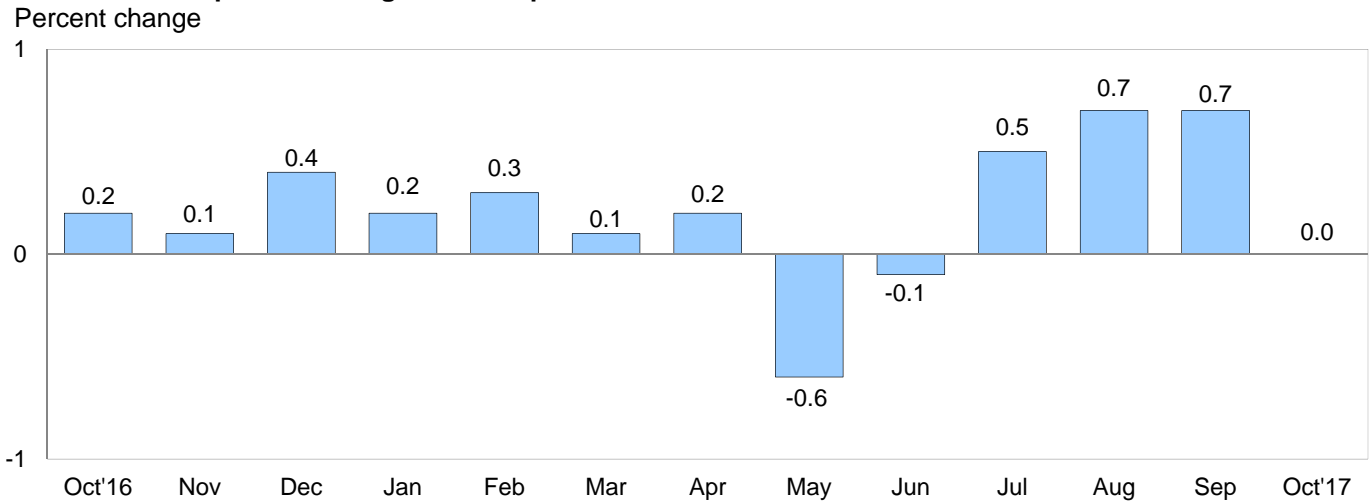
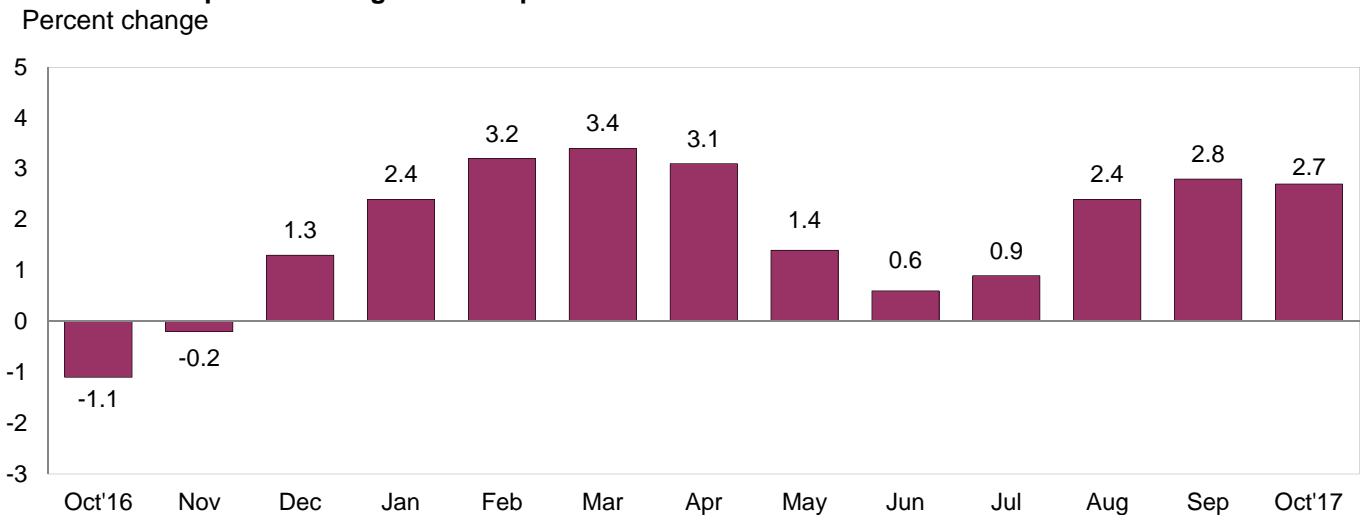


Chart 4. 12-month percent change in the Export Price Index: October 2016 – October 2017



All Exports: U.S. export prices recorded no change in October following 0.7-percent increases in September and August. The index has not recorded a decline since a 0.1-percent drop in June. Higher prices for agricultural exports were offset by lower prices for nonagricultural exports. The price index for exports advanced 2.7 percent over the past year.

Agricultural Exports: The price index for agricultural exports increased 1.9 percent in October, the largest monthly rise since a 2.5-percent advance in June 2016. Higher vegetable prices drove the October increase, more than offsetting lower prices for soybeans and meats. Agricultural export prices increased 3.5 percent over the past year. Increasing vegetable and meat prices were the primary contributors to the 12-month advance.

All Exports Excluding Agriculture: Nonagricultural export prices declined 0.3 percent in October following a 0.9-percent rise in September. In October, the index recorded the first monthly decline since a 0.4-percent decrease in May. Lower prices for nonagricultural industrial supplies and materials drove the decrease, and automotive prices also contributed to the overall decline. In contrast, capital goods and consumer goods prices increased in October. Despite the monthly decline in October, the price index for nonagricultural exports increased 2.5 percent over the past year. Higher nonagricultural industrial supplies and materials prices were the primary contributor to higher prices over the 12-month period.

SELECTED OCTOBER HIGHLIGHTS

Import Prices

Imports by Locality of Origin: Import prices from China recorded no change in October following a 0.3-percent decline in September. Over the past year prices from China fell 0.8 percent. The price index for imports from Japan fell 0.3 percent in October, after a 0.1-percent rise in September. Import prices from Japan decreased 0.8 percent over the past year, the largest 12-month decline since a 1.1-percent drop for the year ended in May 2016. Import prices from Canada rose 1.4 percent for the second consecutive month in October; those were the largest advances since a 2.0-percent rise in January. Import prices from the European Union rose 0.1 percent in October and prices for imports from Mexico fell 0.2 percent.

Nonfuel Industrial Supplies and Materials: Import prices for nonfuel industrial supplies and materials rose 0.9 percent in October following a 1.5-percent advance in September. The index increased 7.9 percent over the past 12 months, the largest over-the-year rise since an 8.1-percent advance in November 2011. Higher import prices for chemicals and selected building materials drove the October advance.

Finished Goods: Import prices for the major finished goods categories were mixed in October. The price index for capital goods rose 0.2 percent in October and recorded a 0.6-percent increase over the past year. Prices for automotive vehicles decreased 0.2 percent in October and consumer goods prices fell 0.1 percent.

Foods, Feeds, and Beverages: The import price index for foods, feeds, and beverages fell 0.2 percent in October. A 4.3-percent drop in prices for feedstuff and food grains and a 2.3-percent drop in vegetable prices were the main contributors to the decline.

Transportation Services: The index for import air passenger fares rose 8.8 percent in October following an 8.5-percent increase in September. The October advance was the largest monthly increase since the index rose 8.9 percent in June 2015. European air passenger fares rose 9.9 percent driving the overall advance. Despite the recent increases, import air passenger fares decreased 1.4 percent over the past year. The price index for import air freight fell 4.0 percent in October and recorded a 5.4-percent increase over the past 12 months.

Export Prices

Nonagricultural Industrial Supplies and Materials: Nonagricultural industrial supplies and materials export prices fell 1.1 percent in October, after increasing 2.8 percent in September. The October drop was the first decline since a 1.4-percent decrease in May. Lower prices for fuel and gold led the October decline.

Finished Goods: Export prices for capital goods rose 0.3 percent in October following a 0.1-percent advance the previous month. The October increase was driven by a 1.3-percent advance in the price index for computers, peripherals, and semiconductors. Export prices for automotive vehicles fell 0.2 percent in October and consumer goods prices ticked up 0.1 percent.

Transportation Services: Export air passenger fares increased 3.9 percent in October, driven by a 3.1-percent increase in European fares. The price index for export air passenger fares rose 2.3 percent over the past year. Export air freight prices advanced 3.0 percent in October and 5.4 percent over the past 12 months.

Import and Export Price Index data for November 2017 are scheduled for release on Thursday, December 14, 2017 at 8:30 a.m. (EST).

Table 1. U.S. import price indexes and percent changes for selected categories of goods: October 2016 to October 2017

[2000=100, unless otherwise noted]

| Description | End Use | Relative importance Sept. 2017 ¹ | Index | | Percent change | | | | |
|---|---------|---|------------|-----------|-------------------------------|------------------------|------------------------|-------------------------|-------------------------|
| | | | Sept. 2017 | Oct. 2017 | Annual Oct. 2016 to Oct. 2017 | Monthly | | | |
| | | | | | | June 2017 to July 2017 | July 2017 to Aug. 2017 | Aug. 2017 to Sept. 2017 | Sept. 2017 to Oct. 2017 |
| All commodities | | 100.000 | 123.9 | 124.2 | 2.5 | -0.2 | 0.6 | 0.8 | 0.2 |
| All imports excluding food and fuels (Dec. 2010=100) | | 84.181 | 99.3 | 99.5 | 1.3 | 0.0 | 0.2 | 0.2 | 0.2 |
| All imports excluding petroleum | | 91.137 | 112.5 | 112.6 | 1.4 | -0.1 | 0.2 | 0.4 | 0.1 |
| All imports excluding fuels (Dec. 2001=100) | | 90.579 | 116.6 | 116.8 | 1.4 | -0.1 | 0.3 | 0.3 | 0.2 |
| Foods, feeds, & beverages | 0 | 6.300 | 185.6 | 185.2 | 3.1 | -0.1 | 0.2 | 1.8 | -0.2 |
| Agricultural foods, feeds & beverages, excluding distilled beverages..... | 00 | 4.974 | 205.3 | 204.2 | 3.7 | 0.0 | 0.4 | 2.3 | -0.5 |
| Nonagricultural foods (fish, distilled beverages)..... | 01 | 1.326 | 140.4 | 142.0 | 1.1 | -0.4 | -0.3 | -0.4 | 1.1 |
| Industrial supplies & materials | 1 | 23.136 | 174.3 | 176.2 | 10.1 | -0.6 | 2.1 | 3.1 | 1.1 |
| Industrial supplies & materials excluding petroleum..... | | 14.449 | 150.1 | 151.0 | 7.1 | -0.7 | 0.8 | 1.2 | 0.6 |
| Industrial supplies & materials excluding fuels (Dec. 2001=100)..... | | 13.749 | 171.3 | 172.8 | 7.9 | -0.4 | 1.0 | 1.5 | 0.9 |
| Industrial supplies & materials, durable.... | | 8.677 | 164.1 | 164.5 | 10.1 | -0.2 | 1.5 | 2.1 | 0.2 |
| Industrial supplies & materials nondurable excluding petroleum..... | | 5.597 | 132.5 | 134.1 | 2.8 | -1.4 | -0.3 | -0.2 | 1.2 |
| Fuels & lubricants..... | 10 | 9.421 | 180.6 | 183.1 | 13.2 | -1.0 | 3.9 | 5.5 | 1.4 |
| Petroleum & petroleum products..... | 100 | 8.863 | 197.0 | 200.4 | 14.9 | -0.6 | 4.4 | 6.3 | 1.7 |
| Crude..... | 10000 | 6.170 | 198.1 | 208.0 | 16.8 | 0.9 | 3.5 | 5.3 | 5.0 |
| Fuels, n.e.s.-coals & gas..... | 101 | 0.406 | 85.9 | 80.9 | -13.8 | -7.2 | -4.2 | -6.4 | -5.8 |
| Gas-natural..... | 10110 | 0.306 | 68.7 | 64.1 | -18.2 | -3.1 | -5.9 | -7.9 | -6.7 |
| Paper & paper base stocks..... | 11 | 0.542 | 107.6 | 108.4 | 3.2 | 0.7 | -0.3 | -0.1 | 0.7 |
| Materials associated with nondurable supplies & materials..... | 12 | 4.564 | 153.5 | 156.5 | 4.5 | -0.9 | 0.1 | 0.6 | 2.0 |
| Selected building materials..... | 13 | 1.478 | 149.4 | 152.6 | 11.1 | 1.1 | 1.9 | -0.5 | 2.1 |
| Unfinished metals related to durable goods..... | 14 | 3.670 | 226.1 | 224.3 | 14.6 | -1.4 | 2.5 | 4.4 | -0.8 |
| Finished metals related to durable goods..... | 15 | 1.776 | 155.0 | 156.1 | 8.6 | 0.5 | 0.7 | 1.8 | 0.7 |
| Nonmetals related to durable goods..... | 16 | 1.685 | 109.9 | 110.4 | 2.3 | 0.6 | 0.1 | -0.1 | 0.5 |
| Capital goods | 2 | 27.304 | 89.2 | 89.4 | 0.6 | 0.1 | 0.1 | 0.0 | 0.2 |
| Electric generating equipment..... | 20 | 3.299 | 117.0 | 117.1 | 1.2 | 0.3 | 0.2 | 0.2 | 0.1 |
| Nonelectrical machinery..... | 21 | 21.457 | 81.7 | 81.8 | 0.6 | 0.2 | 0.1 | -0.1 | 0.1 |
| Transportation equipment excluding motor vehicles (Dec. 2001=100)..... | 22 | 2.548 | 135.0 | 135.6 | -0.5 | -0.1 | 0.3 | 0.2 | 0.4 |
| Automotive vehicles, parts & engines | 3 | 16.118 | 110.3 | 110.1 | -0.5 | -0.3 | 0.1 | 0.1 | -0.2 |
| Consumer goods, excluding automotives | 4 | 27.142 | 106.9 | 106.8 | -0.1 | 0.0 | 0.1 | -0.1 | -0.1 |
| Nondurables, manufactured..... | 40 | 13.330 | 121.5 | 121.4 | 1.5 | -0.2 | 0.0 | 0.0 | -0.1 |
| Durables, manufactured..... | 41 | 12.513 | 93.1 | 93.0 | -1.3 | 0.1 | 0.1 | -0.1 | -0.1 |
| Nonmanufactured consumer goods..... | 42 | 1.299 | 114.6 | 114.9 | -3.1 | -0.1 | -0.4 | 0.2 | 0.3 |

¹ Relative importance figures are based on 2015 trade values.

NOTES: Data may be revised in each of the 3 months after original publication.

Dash = Not available

Table 2. U.S. export price indexes and percent changes for selected categories of goods: October 2016 to October 2017

[2000=100, unless otherwise noted]

| Description | End Use | Relative importance Sept. 2017 ¹ | Index | | Percent change | | | | |
|---|---------|---|------------|-----------|----------------------------------|------------------------|------------------------|-------------------------|-------------------------|
| | | | Sept. 2017 | Oct. 2017 | Annual Oct. 2016 to Oct. 2017 | Monthly | | | |
| | | | | | | June 2017 to July 2017 | July 2017 to Aug. 2017 | Aug. 2017 to Sept. 2017 | Sept. 2017 to Oct. 2017 |
| All commodities..... | | 100.000 | 123.9 | 123.9 | 2.7 | 0.5 | 0.7 | 0.7 | 0.0 |
| Agricultural commodities..... | | 9.263 | 177.0 | 180.3 | 3.5 | 1.8 | 0.1 | -0.7 | 1.9 |
| All exports excluding food and fuels (Dec. 2010=100)..... | | 82.830 | 99.6 | 99.7 | 1.5 | 0.2 | 0.3 | 0.4 | 0.1 |
| Nonagricultural commodities..... | | 90.737 | 119.9 | 119.6 | 2.5 | 0.3 | 0.8 | 0.9 | -0.3 |
| Foods, feeds, & beverages..... | 0 | 8.635 | 179.4 | 183.3 | 4.2 | 2.2 | 0.1 | -0.6 | 2.2 |
| Agricultural foods, feeds & beverages, excluding distilled beverages..... | 00 | 8.015 | 178.3 | 182.2 | 4.1 | 2.0 | 0.1 | -0.7 | 2.2 |
| Nonagricultural foods (fish, distilled beverages)..... | 01 | 0.620 | 201.9 | 206.5 | 6.8 | 3.8 | 0.5 | 0.5 | 2.3 |
| Industrial supplies & materials..... | 1 | 30.535 | 152.9 | 151.4 | 5.8 | 0.6 | 1.8 | 2.7 | -1.0 |
| Industrial supplies & materials, durable.... | | 10.786 | 162.6 | 161.6 | 5.3 | -0.5 | 1.3 | 2.5 | -0.6 |
| Industrial supplies & materials, nondurable..... | | 19.776 | 148.5 | 146.7 | 6.1 | 1.3 | 2.0 | 2.7 | -1.2 |
| Agricultural industrial supplies & materials..... | 10 | 1.248 | 173.7 | 174.0 | -0.1 | 0.5 | -0.4 | -0.4 | 0.2 |
| Nonagricultural industrial supplies & materials..... | | 29.287 | 152.3 | 150.7 | 6.1 | 0.6 | 1.9 | 2.8 | -1.1 |
| Fuels & lubricants..... | 11 | 8.562 | 181.5 | 175.8 | 13.2 | 1.6 | 5.0 | 5.9 | -3.1 |
| Nonagricultural supplies & materials excluding fuels & building materials.... | 12 | 19.692 | 154.2 | 153.7 | 3.4 | 0.3 | 0.7 | 1.6 | -0.3 |
| Selected building materials..... | 13 | 1.034 | 121.5 | 123.6 | 6.0 | 0.1 | 0.9 | 0.5 | 1.7 |
| Capital goods..... | 2 | 37.904 | 108.1 | 108.4 | 1.6 | 0.2 | 0.1 | 0.1 | 0.3 |
| Electrical generating equipment..... | 20 | 3.924 | 113.2 | 113.0 | 1.0 | 0.3 | 0.2 | 0.1 | -0.2 |
| Nonelectrical machinery..... | 21 | 24.786 | 94.1 | 94.5 | 0.9 | 0.2 | 0.2 | 0.0 | 0.4 |
| Transportation equipment excluding motor vehicles (Dec. 2001=100)..... | 22 | 9.193 | 171.2 | 171.5 | 3.9 | 0.2 | 0.1 | 0.1 | 0.2 |
| Automotive vehicles, parts & engines..... | 3 | 10.209 | 113.4 | 113.2 | 0.4 | 0.0 | 0.1 | 0.1 | -0.2 |
| Consumer goods, excluding automotives..... | 4 | 12.717 | 109.2 | 109.3 | -0.7 | 0.4 | 0.3 | 0.0 | 0.1 |
| Nondurables, manufactured..... | 40 | 6.170 | 105.3 | 105.5 | -0.7 | 0.7 | 0.2 | 0.1 | 0.2 |
| Durables, manufactured..... | 41 | 5.163 | 107.7 | 107.6 | 0.2 | 0.3 | 0.3 | -0.1 | -0.1 |

¹ Relative importance figures are based on 2015 trade values.

NOTES: Data may be revised in each of the 3 months after original publication.

Dash = Not available

Table 3. U.S. import price indexes and percent changes for selected industries: October 2016 to October 2017
 [December 2005=100, unless otherwise noted]

| Description | NAICS | Relative importance Sept. 2017 ¹ | Index | | Percent change | | | | |
|---|-------|---|---------------|--------------|---|---------------------------------|---------------------------------|----------------------------------|----------------------------------|
| | | | Sept. 2017 | Oct. 2017 | Annual Oct. 2016 to Oct. 2017 | Monthly | | | |
| | | | | | | June 2017 to July 2017 | July 2017 to Aug. 2017 | Aug. 2017 to Sept. 2017 | Sept. 2017 to Oct. 2017 |
| Nonmanufacturing | | 8.917 | 99.2 | 102.2 | 13.1 | 0.1 | 2.4 | 4.5 | 3.0 |
| Agriculture, forestry, fishing and hunting | 11 | 2.166 | 196.3 | 193.4 | 5.9 | -0.9 | 0.6 | 4.9 | -1.5 |
| Crop production..... | 111 | 1.767 | 214.2 | 211.7 | 5.9 | -0.8 | 0.5 | 6.5 | -1.2 |
| Animal production (Dec. 2014=100)..... | 112 | 0.195 | 75.5 | 73.2 | 1.4 | -1.0 | -0.1 | -6.6 | -3.0 |
| Mining | 21 | 6.750 | 87.6 | 91.6 | 15.4 | 0.4 | 2.9 | 4.4 | 4.6 |
| Oil and gas extraction..... | 211 | 6.472 | 87.1 | 91.1 | 15.2 | 0.6 | 3.1 | 4.7 | 4.6 |
| Mining (except oil and gas) (Dec. 2006=100)..... | 212 | 0.279 | 111.0 | 116.1 | 21.4 | -4.5 | -1.3 | -1.0 | 4.6 |
| Manufacturing | | 90.783 | 110.7 | 110.6 | 1.5 | -0.2 | 0.4 | 0.5 | -0.1 |
| Manufacturing, part 1 | 31 | 11.881 | 124.7 | 124.7 | 0.7 | 0.0 | 0.2 | 0.1 | 0.0 |
| Food manufacturing..... | 311 | 3.488 | 157.0 | 157.4 | 2.5 | 0.0 | 0.1 | 0.1 | 0.3 |
| Beverage and tobacco product manufacturing..... | 312 | 1.060 | 119.2 | 119.5 | 1.1 | 0.3 | -0.1 | 0.3 | 0.3 |
| Textile mills (Dec. 2011=100)..... | 313 | 0.399 | 99.0 | 99.1 | 1.4 | 0.1 | 0.2 | 0.5 | 0.1 |
| Textile product mills..... | 314 | 0.931 | 109.3 | 109.4 | 0.4 | 0.4 | 0.0 | 0.3 | 0.1 |
| Apparel manufacturing..... | 315 | 4.177 | 111.2 | 111.1 | -0.1 | 0.1 | 0.1 | 0.1 | -0.1 |
| Leather and allied product manufacturing..... | 316 | 1.826 | 122.6 | 122.6 | -0.3 | -0.2 | 0.0 | -0.2 | 0.0 |
| Manufacturing, part 2 | 32 | 17.621 | 121.9 | 121.6 | 4.6 | -0.6 | 0.8 | 1.2 | -0.2 |
| Wood product manufacturing..... | 321 | 0.920 | 131.3 | 135.4 | 17.0 | 1.7 | 3.0 | -0.8 | 3.1 |
| Paper manufacturing..... | 322 | 1.019 | 105.3 | 105.7 | 1.6 | 0.4 | -0.1 | -0.1 | 0.4 |
| Printing and related support activities (Dec. 2016=100)..... | 323 | 0.218 | 98.9 | 99.0 | - | 0.0 | -1.3 | 0.2 | 0.1 |
| Petroleum and coal products manufacturing..... | 324 | 2.434 | 90.1 | 83.9 | 8.3 | -4.2 | 6.4 | 8.6 | -6.9 |
| Chemical manufacturing..... | 325 | 9.805 | 135.1 | 136.3 | 4.4 | -0.4 | -0.1 | 0.1 | 0.9 |
| Plastics and rubber products manufacturing..... | 326 | 2.226 | 118.4 | 118.3 | 0.9 | 0.4 | 0.2 | -0.1 | -0.1 |
| Nonmetallic mineral product manufacturing..... | 327 | 0.999 | 128.2 | 128.9 | -0.3 | -0.2 | 0.2 | -0.1 | 0.5 |
| Manufacturing, part 3 | 33 | 61.282 | 104.2 | 104.2 | 0.8 | 0.0 | 0.3 | 0.3 | 0.0 |
| Primary metal manufacturing..... | 331 | 4.366 | 149.1 | 148.6 | 14.4 | -0.7 | 1.7 | 3.9 | -0.3 |
| Fabricated metal product manufacturing... .. | 332 | 3.129 | 125.0 | 125.7 | 3.3 | 0.4 | 0.5 | 1.0 | 0.6 |
| Machinery manufacturing..... | 333 | 7.109 | 117.8 | 117.9 | 1.2 | 0.1 | 0.7 | 0.3 | 0.1 |
| Computer and electronic product manufacturing..... | 334 | 17.402 | 75.6 | 75.7 | -0.8 | 0.1 | 0.0 | -0.5 | 0.1 |
| Electrical equipment, appliance, and component manufacturing..... | 335 | 4.896 | 115.2 | 115.2 | 0.3 | 0.3 | 0.1 | 0.2 | 0.0 |
| Transportation equipment manufacturing.. | 336 | 17.361 | 109.4 | 109.3 | -0.5 | -0.2 | 0.1 | 0.1 | -0.1 |
| Furniture and related product manufacturing..... | 337 | 1.724 | 115.7 | 115.8 | 0.8 | 0.1 | 0.2 | 0.1 | 0.1 |
| Miscellaneous manufacturing..... | 339 | 5.295 | 117.9 | 117.7 | -1.3 | 0.0 | 0.2 | 0.2 | -0.2 |

¹ Relative importance figures are based on 2015 trade values.

NOTES: Data may be revised in each of the 3 months after original publication.

Dash = Not available

Table 4. U.S. export price indexes and percent changes for selected industries: October 2016 to October 2017
 [December 2005=100, unless otherwise noted]

| Description | NAICS | Relative importance Sept. 2017 ¹ | Index | | Percent change | | | | |
|---|-------|---|------------|-----------|----------------------------------|------------------------|------------------------|-------------------------|-------------------------|
| | | | Sept. 2017 | Oct. 2017 | Annual Oct. 2016 to Oct. 2017 | Monthly | | | |
| | | | | | | June 2017 to July 2017 | July 2017 to Aug. 2017 | Aug. 2017 to Sept. 2017 | Sept. 2017 to Oct. 2017 |
| Nonmanufacturing..... | | 7.330 | 132.8 | 137.5 | 12.2 | 4.7 | -1.6 | 0.3 | 3.5 |
| Agriculture, forestry, fishing and hunting..... | 11 | 4.422 | 150.8 | 156.7 | 4.0 | 3.2 | -0.7 | -0.9 | 3.9 |
| Crop production..... | 111 | 4.157 | 156.5 | 162.7 | 3.9 | 3.2 | -0.8 | -1.0 | 4.0 |
| Mining..... | 21 | 2.908 | 85.2 | 87.7 | 27.7 | 7.1 | -2.9 | 2.3 | 2.9 |
| Mining (except oil and gas)..... | 212 | 1.272 | 106.8 | 107.7 | 30.5 | 1.7 | 1.3 | 3.0 | 0.8 |
| Manufacturing..... | | 91.087 | 113.9 | 113.7 | 2.0 | 0.2 | 0.7 | 0.8 | -0.2 |
| Manufacturing, part 1..... | 31 | 7.055 | 139.0 | 139.0 | 2.8 | 0.7 | 0.4 | -0.4 | 0.0 |
| Food manufacturing..... | 311 | 4.758 | 158.0 | 158.2 | 4.0 | 0.7 | 0.6 | -0.5 | 0.1 |
| Beverage and tobacco product manufacturing..... | 312 | 0.713 | 114.6 | 114.1 | 2.1 | 2.9 | -0.1 | 0.6 | -0.4 |
| Textile mills (Dec. 2016=100)..... | 313 | 0.663 | 101.1 | 101.1 | - | -0.3 | -0.1 | 0.3 | 0.0 |
| Leather and allied product manufacturing (Dec. 2016=100)..... | 316 | 0.273 | 96.3 | 95.6 | - | -0.4 | -1.6 | -0.5 | -0.7 |
| Manufacturing, part 2..... | 32 | 24.487 | 111.4 | 110.7 | 3.4 | 0.6 | 2.2 | 2.4 | -0.6 |
| Paper manufacturing..... | 322 | 1.669 | 121.6 | 127.0 | 7.0 | 2.4 | 0.2 | 0.6 | 4.4 |
| Petroleum and coal products manufacturing..... | 324 | 5.816 | 106.4 | 100.9 | 9.3 | -0.8 | 9.5 | 8.2 | -5.2 |
| Chemical manufacturing..... | 325 | 13.128 | 114.6 | 115.2 | 1.2 | 1.0 | 0.2 | 0.8 | 0.5 |
| Plastics and rubber products manufacturing..... | 326 | 2.268 | 114.4 | 114.3 | 0.6 | -0.3 | 0.4 | 0.1 | -0.1 |
| Nonmetallic mineral product manufacturing..... | 327 | 0.840 | 114.3 | 114.8 | 2.0 | 0.1 | 0.1 | 0.6 | 0.4 |
| Manufacturing, part 3..... | 33 | 59.545 | 112.5 | 112.5 | 1.4 | 0.0 | 0.3 | 0.3 | 0.0 |
| Primary metal manufacturing..... | 331 | 4.106 | 142.2 | 139.1 | 2.8 | -1.8 | 1.9 | 3.4 | -2.2 |
| Fabricated metal product manufacturing.. | 332 | 3.276 | 138.2 | 138.3 | 6.1 | -0.1 | 0.1 | 0.0 | 0.1 |
| Machinery manufacturing..... | 333 | 10.182 | 126.2 | 126.2 | 0.2 | 0.2 | 0.2 | 0.2 | 0.0 |
| Computer and electronic product manufacturing..... | 334 | 13.984 | 82.7 | 83.3 | 0.6 | 0.1 | 0.0 | -0.1 | 0.7 |
| Electrical equipment, appliance, and component manufacturing..... | 335 | 3.950 | 113.7 | 113.8 | 1.5 | 0.4 | 0.2 | 0.0 | 0.1 |
| Transportation equipment manufacturing.. | 336 | 18.298 | 124.7 | 124.7 | 2.0 | 0.1 | 0.1 | 0.1 | 0.0 |
| Furniture and related product manufacturing (Dec. 2011=100)..... | 337 | 0.448 | 117.4 | 117.4 | -0.5 | -0.1 | 0.0 | 0.0 | 0.0 |
| Miscellaneous manufacturing..... | 339 | 5.300 | 119.4 | 119.3 | -0.3 | 0.3 | 0.3 | 0.2 | -0.1 |

¹ Relative importance figures are based on 2015 trade values.

NOTES: Data may be revised in each of the 3 months after original publication.

Dash = Not available

Table 5. U.S. import price indexes and percent changes for selected categories of goods: October 2016 to October 2017

[2000=100, unless otherwise noted]

| Description | Harmonized system | Relative importance Sept. 2017 ¹ | Index | | Percent change | | | | |
|---|-------------------|---|------------|-----------|------------------------|------------------------|------------------------|-------------------------|-------------------------|
| | | | Sept. 2017 | Oct. 2017 | Annual | Monthly | | | |
| | | | | | Oct. 2016 to Oct. 2017 | June 2017 to July 2017 | July 2017 to Aug. 2017 | Aug. 2017 to Sept. 2017 | Sept. 2017 to Oct. 2017 |
| Live animals; animal products..... | I | 1.470 | 191.7 | 192.3 | 2.1 | -0.9 | -1.0 | -1.4 | 0.3 |
| Meat and edible meat offal..... | 02 | 0.444 | 246.6 | 250.9 | 6.8 | -1.1 | -2.5 | 0.3 | 1.7 |
| Fish and crustaceans, molluscs and other aquatic invertebrates..... | 03 | 0.723 | 139.4 | 140.6 | -2.6 | -1.5 | -1.0 | -0.6 | 0.9 |
| Vegetable products..... | II | 2.221 | 235.1 | 233.1 | 5.0 | -1.1 | 0.7 | 6.1 | -0.9 |
| Edible vegetables, roots, and tubers..... | 07 | 0.408 | 468.5 | 454.1 | -9.8 | -0.9 | -1.9 | 3.0 | -3.1 |
| Edible fruit and nuts; peel of citrus fruit or melons..... | 08 | 1.016 | 152.0 | 151.5 | 18.9 | -2.7 | 2.1 | 13.5 | -0.3 |
| Coffee, tea, mate and spices..... | 09 | 0.353 | 229.4 | 225.1 | -3.9 | 2.6 | 0.3 | -1.7 | -1.9 |
| Animal or vegetable fats and oils (Dec. 2009=100)..... | III | 0.307 | 118.4 | 116.4 | 5.9 | 0.1 | 1.0 | 1.7 | -1.7 |
| Prepared foodstuffs, beverages, and tobacco..... | IV | 2.707 | 162.8 | 162.7 | 1.2 | 0.6 | 0.6 | 0.2 | -0.1 |
| Sugars and sugar confectionary (Dec. 2012=100)..... | 17 | 0.185 | 86.8 | 88.0 | 0.9 | 0.1 | -0.8 | 0.9 | 1.4 |
| Cocoa and cocoa preparations (Dec. 2009=100)..... | 18 | 0.192 | 95.0 | 96.2 | -13.4 | -1.7 | 0.7 | -0.5 | 1.3 |
| Preparations of vegetables, fruit, nuts, or other parts of plants..... | 20 | 0.363 | 170.4 | 172.1 | 6.7 | 1.9 | 0.4 | 1.0 | 1.0 |
| Beverages, spirits, and vinegar..... | 22 | 1.000 | 128.9 | 129.1 | 0.9 | 0.2 | -0.1 | 0.3 | 0.2 |
| Mineral products..... | V | 9.309 | 180.3 | 183.2 | 13.7 | -1.0 | 3.8 | 5.3 | 1.6 |
| Mineral fuels, oils and residuals, bituminous substances and mineral waxes..... | 27 | 9.051 | 177.9 | 180.2 | 13.5 | -1.0 | 4.0 | 5.5 | 1.3 |
| Products of the chemical or allied industries..... | VI | 9.233 | 151.4 | 152.5 | 4.2 | -0.3 | -0.1 | 0.0 | 0.7 |
| Inorganic chemicals..... | 28 | 0.520 | 259.9 | 273.8 | 9.7 | -1.1 | -2.2 | -4.0 | 5.3 |
| Organic chemicals..... | 29 | 2.421 | 124.6 | 125.6 | 4.2 | -0.4 | 0.2 | 1.1 | 0.8 |
| Pharmaceutical products..... | 30 | 4.354 | 148.3 | 148.0 | 4.1 | -0.4 | 0.0 | -0.2 | -0.2 |
| Fertilizers (Dec. 2009=100)..... | 31 | 0.252 | 71.0 | 78.7 | 12.1 | -1.2 | -3.2 | 1.3 | 10.8 |
| Tanning extracts; dye, pigments, varnish, paints & putty (Dec. 2011=100)..... | 32 | 0.192 | 106.6 | 106.2 | 3.6 | 0.4 | -0.1 | -2.1 | -0.4 |
| Essential oils and resinoids (Dec. 2016=100)..... | 33 | 0.562 | 102.4 | 102.8 | - | 1.4 | 0.7 | 1.0 | 0.4 |
| Miscellaneous chemical products..... | 38 | 0.696 | 105.1 | 105.2 | 3.2 | 1.0 | 0.1 | 0.1 | 0.1 |
| Plastics and articles thereof; rubber and articles thereof..... | VII | 3.433 | 140.2 | 140.6 | 2.3 | -0.1 | 0.4 | 0.3 | 0.3 |
| Plastics and articles thereof..... | 39 | 2.183 | 142.2 | 143.0 | 1.8 | 0.4 | 0.2 | 0.2 | 0.6 |
| Rubber and articles thereof..... | 40 | 1.250 | 138.0 | 137.7 | 3.1 | -1.2 | 0.7 | 0.4 | -0.2 |
| Raw hides, skins, leather, furskins, travel goods, etc..... | VIII | 0.683 | 124.1 | 124.1 | 0.6 | 0.1 | 0.0 | 0.3 | 0.0 |
| Articles of leather; travel goods, bags, etc. of various materials..... | 42 | 0.653 | 129.4 | 129.5 | 0.6 | 0.2 | 0.0 | 0.3 | 0.1 |
| Wood, wood charcoal, cork, straw, basketware and wickerwork..... | IX | 0.957 | 160.0 | 164.8 | 17.0 | 1.6 | 2.8 | -0.7 | 3.0 |
| Wood and articles of wood; wood charcoal (Dec. 2014=100)..... | 44 | 0.932 | 110.4 | 113.7 | 17.3 | 1.6 | 2.9 | -0.6 | 3.0 |
| Woodpulp, recovered paper, and paper products..... | X | 1.080 | 110.3 | 110.8 | 1.8 | 0.3 | -0.5 | 0.0 | 0.5 |
| Paper and paperboard; articles of paper pulp, paper or paperboard..... | 48 | 0.713 | 102.9 | 103.0 | -0.5 | -0.1 | 0.1 | -0.1 | 0.1 |
| Printed matter (Dec. 2015=100)..... | 49 | 0.216 | 104.7 | 104.9 | 2.3 | 0.1 | -1.5 | 0.2 | 0.2 |
| Textile and textile articles..... | XI | 5.325 | 113.5 | 113.5 | 0.3 | 0.1 | 0.2 | 0.1 | 0.0 |

See footnotes at end of table.

Table 5. U.S. import price indexes and percent changes for selected categories of goods: October 2016 to October 2017 — Continued
 [2000=100, unless otherwise noted]

| Description | Harmonized system | Relative importance Sept. 2017 ¹ | Index | | Percent change | | | | |
|--|-------------------|---|------------|-----------|------------------------|------------------------|------------------------|-------------------------|-------------------------|
| | | | Sept. 2017 | Oct. 2017 | Annual | Monthly | | | |
| | | | | | Oct. 2016 to Oct. 2017 | June 2017 to July 2017 | July 2017 to Aug. 2017 | Aug. 2017 to Sept. 2017 | Sept. 2017 to Oct. 2017 |
| Articles of apparel and clothing accessories, knitted or crocheted..... | 61 | 2.187 | 103.9 | 103.8 | 0.1 | 0.2 | 0.3 | -0.1 | -0.1 |
| Articles of apparel and clothing accessories, not knitted or crocheted..... | 62 | 1.819 | 119.0 | 118.9 | -0.3 | 0.0 | 0.0 | 0.1 | -0.1 |
| Made-up or worn textile articles..... | 63 | 0.648 | 103.9 | 103.9 | 0.6 | 0.0 | 0.0 | 0.2 | 0.0 |
| Headgear, umbrellas, artificial flowers, etc..... | XII | 1.502 | 121.7 | 121.6 | -0.7 | -0.3 | -0.1 | -0.1 | -0.1 |
| Footwear and parts of such articles..... | 64 | 1.272 | 120.8 | 120.7 | -0.7 | -0.4 | 0.1 | -0.2 | -0.1 |
| Stone, plaster, cement, asbestos, ceramics, glass etc..... | XIII | 0.938 | 130.5 | 130.9 | 0.1 | -0.2 | 0.4 | 0.2 | 0.3 |
| Articles of stone, plaster, cement, asbestos, or mica (Dec. 2015=100)..... | 68 | 0.324 | 96.7 | 97.2 | -0.6 | 0.1 | 0.0 | 0.1 | 0.5 |
| Ceramic products..... | 69 | 0.269 | 135.9 | 136.4 | -0.5 | -0.7 | 0.4 | 0.2 | 0.4 |
| Glass and glassware..... | 70 | 0.345 | 131.2 | 131.2 | 1.1 | 0.1 | 0.6 | 0.2 | 0.0 |
| Pearls, stones, precious metals, imitation jewelry, and coins..... | XIV | 2.873 | 174.9 | 170.6 | -1.3 | -1.9 | 2.0 | 2.5 | -2.5 |
| Base metals and articles of base metals. ... | XV | 5.682 | 172.4 | 173.9 | 12.0 | 0.3 | 0.7 | 2.3 | 0.9 |
| Iron and steel..... | 72 | 1.373 | 200.7 | 204.3 | 22.0 | -0.8 | 1.1 | 1.8 | 1.8 |
| Articles of iron or steel..... | 73 | 1.709 | 146.3 | 147.9 | 8.1 | 0.9 | -0.8 | 1.5 | 1.1 |
| Copper and articles thereof..... | 74 | 0.423 | 300.7 | 290.9 | 21.6 | 2.1 | 5.1 | 5.3 | -3.3 |
| Aluminum and articles thereof..... | 76 | 0.825 | 132.8 | 136.3 | 13.1 | 0.4 | 0.1 | 2.9 | 2.6 |
| Tools, implements, cutlery, spoons and forks, of base metal; parts thereof..... | 82 | 0.431 | 123.0 | 121.9 | -0.3 | 0.1 | 0.4 | 0.0 | -0.9 |
| Miscellaneous articles of base metal..... | 83 | 0.521 | 137.6 | 137.8 | 1.0 | -0.1 | 0.3 | 0.6 | 0.1 |
| Machinery, electrical equipment, TV image and sound recorders, parts, etc..... | XVI | 29.627 | 80.6 | 80.7 | -0.1 | 0.2 | 0.1 | -0.1 | 0.1 |
| Machinery and mechanical appliances; parts thereof..... | 84 | 14.814 | 86.5 | 86.6 | 1.1 | 0.2 | 0.3 | 0.2 | 0.1 |
| Electrical machinery and equip, sound and TV recorders & reproducers, parts..... | 85 | 14.813 | 75.1 | 75.1 | -1.3 | 0.3 | 0.0 | -0.5 | 0.0 |
| Vehicles, aircraft, vessels and associated transport equipment..... | XVII | 14.474 | 113.9 | 113.8 | -0.5 | -0.4 | 0.1 | 0.1 | -0.1 |
| Motor vehicles and their parts..... | 87 | 13.027 | 112.9 | 112.7 | -0.3 | -0.4 | 0.1 | 0.1 | -0.2 |
| Aircraft, spacecraft, and parts thereof (Dec. 2002=100)..... | 88 | 1.316 | 115.5 | 115.8 | -2.6 | -0.2 | -0.3 | 0.1 | 0.3 |
| Optical, photo, measuring, medical & musical instruments; & timepieces..... | XVIII | 3.845 | 102.0 | 102.0 | -0.9 | 0.2 | 0.2 | 0.2 | 0.0 |
| Optical, photographic, measuring and medical instruments..... | 90 | 3.517 | 98.6 | 98.6 | -1.0 | 0.2 | 0.1 | 0.3 | 0.0 |
| Clocks and watches and parts thereof..... | 91 | 0.269 | 143.9 | 143.8 | 1.1 | 1.0 | 0.0 | 0.0 | -0.1 |
| Miscellaneous manufactured articles..... | XX | 4.258 | 111.1 | 111.2 | -0.4 | 0.1 | 0.1 | 0.0 | 0.1 |
| Furniture & stuffed furnishings; lamps & lighting fittings, nesoi; prefab bldgs..... | 94 | 2.638 | 116.9 | 116.9 | 0.3 | 0.2 | 0.2 | 0.1 | 0.0 |
| Toys, games and sports equipment; parts and accessories thereof..... | 95 | 1.347 | 101.3 | 101.3 | -1.9 | 0.0 | -0.1 | 0.0 | 0.0 |
| Miscellaneous manufactured articles..... | 96 | 0.273 | 129.8 | 129.8 | -1.5 | 0.0 | 0.0 | 0.1 | 0.0 |

¹ Relative importance figures are based on 2015 trade values.

NOTES: Data may be revised in each of the 3 months after original publication.

Dash = Not available

Table 6. U.S. export price indexes and percent changes for selected categories of goods: October 2016 to October 2017

[2000=100, unless otherwise noted]

| Description | Harmoni- zied system | Relative importance Sept. 2017 ¹ | Index | | Percent change | | | | |
|--|----------------------------|--|---------------|--------------|---------------------------------|---------------------------------|---------------------------------|----------------------------------|----------------------------------|
| | | | Sept. 2017 | Oct. 2017 | Annual | Monthly | | | |
| | | | | | Oct. 2016 to Oct. 2017 | June 2017 to July 2017 | July 2017 to Aug. 2017 | Aug. 2017 to Sept. 2017 | Sept. 2017 to Oct. 2017 |
| Live animals; animal products..... | I | 1.910 | 208.6 | 208.9 | 8.8 | 2.3 | 0.2 | -1.8 | 0.1 |
| Meat & edible meat offal (Dec. 2006=100)... | 02 | 1.123 | 166.5 | 166.2 | 13.1 | 2.3 | 0.2 | -2.7 | -0.2 |
| Fish and crustaceans, mollusks and aquatic invertebrates (Dec. 2016=100)..... | 03 | 0.405 | 110.1 | 113.9 | - | 5.5 | 0.5 | 0.5 | 3.5 |
| Vegetable products..... | II | 4.150 | 190.8 | 200.1 | 5.2 | 3.2 | -0.6 | -0.6 | 4.9 |
| Edible fruit and nuts; peel of citrus fruit or melons..... | 08 | 0.835 | 141.9 | 144.7 | -4.7 | 3.1 | 1.9 | 1.4 | 2.0 |
| Cereals..... | 10 | 1.176 | 174.1 | 178.8 | 5.9 | 7.6 | -5.2 | -3.8 | 2.7 |
| Oilseeds and misc. grains, seeds, fruits, plants, straw and fodder..... | 12 | 1.632 | 199.8 | 199.0 | -0.1 | 4.1 | 1.2 | -0.3 | -0.4 |
| Prepared foodstuffs, beverages, and tobacco..... | IV | 3.061 | 149.2 | 149.0 | 0.4 | 0.5 | 0.2 | 0.3 | -0.1 |
| Preparations of vegetables, fruit, nuts or other parts of plants (Dec. 2009=100)..... | 20 | 0.377 | 116.6 | 117.7 | 1.0 | 0.1 | -0.1 | -0.3 | 0.9 |
| Beverages, spirits, and vinegar (Dec. 2008=100)..... | 22 | 0.548 | 112.4 | 111.3 | -0.2 | 0.2 | 0.6 | 0.3 | -1.0 |
| Residues and waste from the food industries; prepared animal feed..... | 23 | 0.697 | 192.7 | 192.9 | -6.2 | 0.2 | -1.6 | 1.5 | 0.1 |
| Mineral products..... | V | 8.951 | 216.6 | 211.4 | 17.9 | 2.2 | 4.7 | 6.1 | -2.4 |
| Ores, slag and ash (Dec. 2012=100)..... | 26 | 0.597 | 101.9 | 103.8 | 27.2 | 2.7 | 3.1 | 6.9 | 1.9 |
| Mineral fuels, oils and residuals, bituminous substances and mineral waxes..... | 27 | 8.163 | 207.6 | 201.9 | 17.7 | 2.2 | 4.9 | 6.1 | -2.7 |
| Products of the chemical or allied industries..... | VI | 10.744 | 135.0 | 135.2 | -0.4 | 1.1 | 0.4 | 0.3 | 0.1 |
| Inorganic chemicals..... | 28 | 0.742 | 157.1 | 158.4 | -9.5 | 0.5 | 1.1 | -3.4 | 0.8 |
| Organic chemicals..... | 29 | 2.575 | 135.7 | 135.7 | 2.1 | 1.5 | 1.1 | 2.0 | 0.0 |
| Pharmaceutical products..... | 30 | 3.148 | 105.5 | 105.9 | -2.6 | 0.1 | 0.4 | 0.2 | 0.4 |
| Fertilizers (Dec. 2016=100)..... | 31 | 0.238 | 104.5 | 104.4 | - | -0.6 | -1.0 | -1.4 | -0.1 |
| Tanning or dyeing extracts, dyes, paints varnish, putty, & inks (Dec. 2015=100).... | 32 | 0.523 | 99.4 | 102.4 | 5.0 | -0.4 | -1.7 | 1.1 | 3.0 |
| Essential oils and resinoids; perfumery cosmetic or toilet preparations..... | 33 | 0.805 | 132.5 | 132.1 | 0.8 | -0.1 | -0.2 | 0.2 | -0.3 |
| Soap; lubricants; waxes, polishing or scouring products; candles, pastes..... | 34 | 0.564 | 128.9 | 125.8 | 8.2 | 15.3 | 0.1 | -0.7 | -2.4 |
| Miscellaneous chemical products..... | 38 | 1.726 | 144.2 | 144.8 | -0.7 | 0.1 | 0.1 | 0.0 | 0.4 |
| Plastics and articles thereof; rubber and articles thereof..... | VII | 5.054 | 138.0 | 139.6 | 2.0 | -0.3 | 0.0 | 1.0 | 1.2 |
| Plastics and articles thereof..... | 39 | 4.128 | 134.1 | 135.6 | 2.3 | 0.1 | 0.2 | 1.0 | 1.1 |
| Rubber and articles thereof..... | 40 | 0.926 | 153.5 | 156.0 | 0.8 | -2.0 | -0.8 | 0.5 | 1.6 |
| Raw hides, skins, leather, furskins, travel goods, etc..... | VIII | 0.326 | 116.3 | 114.6 | -4.8 | -0.9 | -2.3 | -0.7 | -1.5 |
| Wood, wood charcoal, cork, straw, baskets and wickerwork (Dec. 2014=100)..... | IX | 0.644 | 101.0 | 103.9 | 9.3 | 2.3 | 0.8 | 1.8 | 2.9 |
| Woodpulp, recovered paper, and paper products..... | X | 2.101 | 126.2 | 123.1 | 0.4 | 2.0 | -0.8 | -2.5 | -2.5 |
| Woodpulp and recovered paper..... | 47 | 0.656 | 133.7 | 119.4 | -7.7 | 3.6 | -2.5 | -7.9 | -10.7 |
| Paper and paperboard; articles of paper pulp, paper or paperboard..... | 48 | 1.097 | 122.5 | 124.8 | 5.2 | 1.5 | 0.1 | 0.1 | 1.9 |
| Printed material (Dec. 2014=100)..... | 49 | 0.348 | 101.5 | 101.5 | 0.9 | 0.0 | 0.0 | 0.0 | 0.0 |
| Textile and textile articles..... | XI | 1.713 | 119.6 | 119.3 | -0.3 | -0.3 | 0.3 | -0.4 | -0.3 |
| Cotton, including yarns and woven fabrics thereof..... | 52 | 0.444 | 125.0 | 123.1 | 0.7 | -1.0 | 0.9 | -1.8 | -1.5 |

See footnotes at end of table.

Table 6. U.S. export price indexes and percent changes for selected categories of goods: October 2016 to October 2017 — Continued
 [2000=100, unless otherwise noted]

| Description | Harmoni- zied system | Relative importance Sept. 2017 ¹ | Index | | Percent change | | | | |
|--|----------------------------|--|---------------|--------------|---|---------------------------------|---------------------------------|----------------------------------|----------------------------------|
| | | | Sept. 2017 | Oct. 2017 | Annual Oct. 2016 to Oct. 2017 | Monthly | | | |
| | | | | | | June 2017 to July 2017 | July 2017 to Aug. 2017 | Aug. 2017 to Sept. 2017 | Sept. 2017 to Oct. 2017 |
| Stone, plaster, cement, asbestos, ceramics, glass etc..... | XIII | 0.827 | 123.3 | 123.5 | 0.4 | 0.2 | -0.1 | 0.3 | 0.2 |
| Articles of stone, plaster, cement, asbestos, or mica (Dec. 2015=100)..... | 68 | 0.275 | 101.3 | 101.4 | 0.2 | 0.0 | 0.2 | 0.0 | 0.1 |
| Glass and glassware..... | 70 | 0.420 | 98.7 | 99.1 | -0.6 | -0.1 | -0.2 | 0.4 | 0.4 |
| Pearls, stones, precious metals, imitation jewelry, and coins..... | XIV | 4.300 | 240.5 | 234.6 | -0.3 | -1.5 | 1.7 | 2.9 | -2.5 |
| Base metals and articles of base metals. ... | XV | 5.037 | 156.9 | 156.3 | 9.5 | 0.2 | 1.2 | 2.3 | -0.4 |
| Iron and steel..... | 72 | 1.098 | 168.1 | 163.9 | 16.5 | 1.2 | 2.5 | 5.5 | -2.5 |
| Copper and articles thereof..... | 74 | 0.526 | 188.8 | 190.1 | 24.7 | 2.7 | 4.3 | 5.2 | 0.7 |
| Aluminum and articles thereof..... | 76 | 0.861 | 115.8 | 115.9 | 12.4 | -0.9 | 1.3 | 3.7 | 0.1 |
| Tools, implements, cutlery, spoons and forks, of base metal (Dec. 2015=100). | 82 | 0.344 | 99.5 | 99.5 | -0.5 | 0.0 | 0.0 | 0.0 | 0.0 |
| Miscellaneous articles of base metal..... | 83 | 0.343 | 148.2 | 148.2 | 0.3 | 0.0 | 0.0 | 0.1 | 0.0 |
| Machinery, electrical equipment, TV image and sound recorders, parts, etc..... | XVI | 28.455 | 96.4 | 96.6 | 1.5 | 0.2 | 0.1 | 0.0 | 0.2 |
| Machinery and mechanical appliances; parts thereof..... | 84 | 16.727 | 114.0 | 114.3 | 1.9 | 0.1 | 0.1 | 0.0 | 0.3 |
| Electrical machinery and equipment and parts and accessories thereof..... | 85 | 11.728 | 77.3 | 77.6 | 0.8 | 0.4 | 0.1 | -0.1 | 0.4 |
| Vehicles, aircraft, vessels and associated transport equipment..... | XVII | 14.847 | 133.1 | 133.1 | 1.0 | 0.1 | 0.2 | 0.1 | 0.0 |
| Motor vehicles and their parts..... | 87 | 8.595 | 115.3 | 115.1 | 0.3 | 0.1 | 0.1 | 0.0 | -0.2 |
| Optical, photo, measuring, medical & musical instruments; & timepieces..... | XVIII | 5.992 | 106.8 | 107.3 | 1.1 | 0.1 | 0.3 | 0.1 | 0.5 |
| Miscellaneous manufactured articles..... | XX | 1.465 | 112.2 | 112.1 | -0.4 | -0.1 | 0.0 | -0.1 | -0.1 |
| Furniture; stuffed furnishings; lamps and lighting fittings nesoi;..... | 94 | 0.886 | 128.2 | 128.1 | -0.4 | 0.0 | -0.1 | 0.0 | -0.1 |
| Toys, games and sports equipment; parts and accessories thereof..... | 95 | 0.429 | 88.7 | 88.8 | -0.4 | 0.0 | 0.0 | 0.0 | 0.1 |

¹ Relative importance figures are based on 2015 trade values.

NOTES: Data may be revised in each of the 3 months after original publication.

Dash = Not available

Table 7. U.S. import price indexes and percent changes by locality of origin: October 2016 to October 2017
 [2000=100, unless otherwise noted]

| Description | Relative importance Sept. 2017 ¹ | Index | | Percent change | | | | |
|---|---|---------------|--------------|------------------------------|------------------------------|------------------------------|-------------------------------|-------------------------------|
| | | Sept. 2017 | Oct. 2017 | Annual | Monthly | | | |
| | | | | Oct. 2016 to Oct. 2017 | June 2017 to July 2017 | July 2017 to Aug. 2017 | Aug. 2017 to Sept. 2017 | Sept. 2017 to Oct. 2017 |
| Industrialized Countries² | 100.000 | 120.7 | 121.0 | 2.8 | -0.2 | 0.7 | 0.8 | 0.2 |
| Nonmanufacturing..... | 8.650 | 139.4 | 144.3 | 12.9 | -0.3 | 2.2 | 3.7 | 3.5 |
| Manufacturing..... | 90.856 | 118.6 | 118.6 | 1.9 | -0.3 | 0.5 | 0.5 | 0.0 |
| Other Countries³ | 100.000 | 120.3 | 120.4 | 1.7 | 0.1 | 0.4 | 0.7 | 0.1 |
| Nonmanufacturing..... | 9.250 | 206.3 | 209.7 | 15.9 | 0.7 | 2.1 | 5.6 | 1.6 |
| Manufacturing..... | 90.541 | 103.3 | 103.2 | 0.4 | 0.1 | 0.3 | 0.2 | -0.1 |
| Canada | 100.000 | 126.3 | 128.1 | 6.3 | -0.2 | 1.1 | 1.4 | 1.4 |
| Nonmanufacturing..... | 23.922 | 132.9 | 137.6 | 12.7 | -0.2 | 2.3 | 3.5 | 3.5 |
| Manufacturing..... | 75.267 | 128.3 | 129.3 | 4.1 | -0.2 | 0.6 | 0.7 | 0.8 |
| European Union⁴ | 100.000 | 134.0 | 134.1 | 1.7 | -0.2 | 0.8 | 0.3 | 0.1 |
| Manufacturing..... | 99.386 | 130.6 | 130.7 | 1.8 | -0.2 | 0.7 | 0.3 | 0.1 |
| France (Dec. 2003=100) | 100.000 | 125.4 | 125.8 | 3.1 | 0.3 | 1.6 | 0.4 | 0.3 |
| Germany (Dec. 2003=100) | 100.000 | 115.1 | 115.4 | 2.9 | 0.3 | 0.4 | 0.2 | 0.3 |
| United Kingdom (Dec. 2003=100) | 100.000 | 118.2 | 118.4 | 0.3 | 0.0 | 0.3 | 0.3 | 0.2 |
| Latin America⁵ | 100.000 | 145.9 | 146.8 | 4.6 | 0.3 | 0.6 | 1.4 | 0.6 |
| Nonmanufacturing..... | 19.265 | 242.0 | 241.6 | 17.6 | 1.3 | 2.7 | 6.7 | -0.2 |
| Manufacturing..... | 80.387 | 120.5 | 121.5 | 1.9 | 0.1 | 0.2 | 0.1 | 0.8 |
| Mexico (Dec. 2003=100) | 100.000 | 129.1 | 128.9 | 2.4 | 0.0 | 0.5 | 1.4 | -0.2 |
| Nonmanufacturing (Dec. 2008=100)..... | 10.237 | 145.4 | 137.4 | 20.7 | -0.1 | 3.1 | 13.8 | -5.5 |
| Manufacturing (Dec. 2008=100)..... | 89.459 | 88.3 | 88.7 | 0.7 | 0.0 | 0.1 | 0.2 | 0.5 |
| Pacific Rim (Dec. 2003=100)⁶ | 100.000 | 98.4 | 98.4 | -0.2 | 0.1 | -0.1 | 0.0 | 0.0 |
| China (Dec. 2003=100) | 100.000 | 99.8 | 99.8 | -0.8 | 0.1 | 0.0 | -0.3 | 0.0 |
| Japan | 100.000 | 95.8 | 95.5 | -0.8 | -0.2 | -0.4 | 0.1 | -0.3 |
| Asian NICs⁷ | 100.000 | 87.3 | 87.5 | 3.8 | 0.5 | 0.2 | 0.7 | 0.2 |
| ASEAN (Dec. 2003=100)⁸ | 100.000 | 98.1 | 98.2 | 1.1 | -0.2 | 0.2 | 0.1 | 0.1 |
| Asia Near East (Dec. 2003=100)⁹ | 100.000 | 153.0 | 165.1 | 11.3 | -0.7 | 0.0 | 3.4 | 7.9 |

¹ Relative importance figures are based on 2015 trade values.

² Western Europe, Canada, Japan, Australia, New Zealand, and South Africa.

³ Eastern Europe, Latin America, OPEC countries, and other countries in Asia, Africa, and the Western Hemisphere.

⁴ European Union countries.

⁵ Mexico, Central America, South America, and the Caribbean.

⁶ China, Japan, Australia, Brunei, Indonesia, Macao, Malaysia, New Zealand, Papua New Guinea, Philippines, and the Asian Newly Industrialized Countries.

⁷ Asian Newly Industrialized Countries - Hong Kong, Singapore, South Korea, and Taiwan.

⁸ Association of Southeast Asian Nations - Brunei, Cambodia, Indonesia, Laos, Malaysia, Myanmar, Philippines, Singapore, Thailand, and Vietnam.

⁹ Bahrain, Iran, Iraq, Israel, Jordan, Kuwait, Lebanon, Oman, Qatar, Saudi Arabia, Syria, United Arab Emirates, and Yemen.

NOTES: Data may be revised in each of the 3 months after original publication.

Regions are not mutually exclusive.

Dash = Not available

Table 8. U.S. international price indexes and percent changes for selected transportation services: October 2016 to October 2017

[2000=100, unless otherwise noted]

| Description | Relative importance Sept. 2017 ¹ | Index | | Percent change | | | | |
|---|---|------------|-----------|------------------------|------------------------|------------------------|-------------------------|-------------------------|
| | | Sept. 2017 | Oct. 2017 | Annual | Monthly | | | |
| | | | | Oct. 2016 to Oct. 2017 | June 2017 to July 2017 | July 2017 to Aug. 2017 | Aug. 2017 to Sept. 2017 | Sept. 2017 to Oct. 2017 |
| Air Freight | | | | | | | | |
| Import Air Freight | 100.000 | 182.8 | 175.5 | 5.4 | 10.3 | 0.2 | 0.4 | -4.0 |
| Europe (Dec. 2003=100)..... | 23.789 | 147.7 | 145.1 | 4.7 | 3.1 | 1.0 | 2.1 | -1.8 |
| Asia..... | 64.790 | 175.6 | 165.9 | 7.0 | 15.8 | -0.2 | 0.0 | -5.5 |
| Export Air Freight | 100.000 | 158.3 | 163.0 | 5.4 | -2.5 | -0.3 | 0.5 | 3.0 |
| Europe (Dec. 2006=100)..... | 33.138 | 147.9 | 150.1 | 3.2 | 0.0 | 0.0 | 0.7 | 1.5 |
| Inbound Air Freight | 100.000 | 166.3 | 161.0 | 4.2 | 6.3 | 0.4 | 0.5 | -3.2 |
| Europe (Dec. 2003=100)..... | 25.803 | 136.5 | 130.8 | -3.0 | 2.3 | 0.6 | 1.6 | -4.2 |
| Asia..... | 61.833 | 159.4 | 153.7 | 7.9 | 10.2 | 0.4 | 0.1 | -3.6 |
| Outbound Air Freight | 100.000 | 139.0 | 140.4 | 2.4 | 1.5 | -1.5 | -1.4 | 1.0 |
| Europe (Dec. 2003=100)..... | 30.570 | 143.8 | 143.8 | 0.2 | 0.4 | 0.0 | -1.5 | 0.0 |
| Asia..... | 46.581 | 133.7 | 134.0 | 4.1 | 2.9 | -3.1 | -2.4 | 0.2 |
| Air Passenger Fares | | | | | | | | |
| Import Air Passenger Fares | 100.000 | 171.3 | 186.4 | -1.4 | -2.8 | -10.6 | 8.5 | 8.8 |
| Europe..... | 41.549 | 193.0 | 212.2 | -3.9 | -6.1 | -12.4 | 18.8 | 9.9 |
| Asia..... | 22.904 | 135.1 | 135.5 | 3.2 | -6.5 | -8.4 | 4.4 | 0.3 |
| Latin America/Caribbean..... | 9.762 | 152.7 | 155.1 | 0.4 | 2.0 | -2.5 | -5.7 | 1.6 |
| Export Air Passenger Fares | 100.000 | 147.7 | 153.4 | 2.3 | 5.0 | -2.1 | -8.2 | 3.9 |
| Europe..... | 33.056 | 206.3 | 212.6 | 6.8 | 1.8 | -14.1 | 13.6 | 3.1 |
| Asia..... | 24.633 | 118.9 | 116.0 | -8.3 | 0.2 | 16.4 | -20.5 | -2.4 |
| Latin America/Caribbean..... | 25.264 | 162.7 | 159.3 | -3.2 | 6.6 | -1.5 | -3.6 | -2.1 |

¹ Relative importance figures are based on 2015 trade values.

NOTES: Data may be revised in each of the 3 months after original publication.

Dash = Not available

TECHNICAL NOTE

Import and Export Merchandise and Services Price Indexes - All indexes use a modified Laspeyres formula and are not seasonally adjusted. Price indexes are reweighted annually, with a 2-year lag in the weights. Published series use a base year of 2000=100 where possible. More detailed index series and additional information may be obtained at www.bls.gov/mxp or by calling (202) 691-7101.

Merchandise Goods Classification Systems - The merchandise price indexes are published using three classification systems. Items are classified by end use according to the Bureau of Economic Analysis Classification System, by industry according to the North American Industry Classification System (NAICS), and by product category according to the Harmonized System (HS). While classification by end use and product category are self-explanatory, some notes are in order for classifying items by industry. In the NAICS imports and exports tables, items are classified by output industry, not input industry. As an example, NAICS import index 326 (plastics and rubber products manufacturing) include outputs such as manufactured plastic rather than inputs such as petroleum. The NAICS classification structure also matches the classification system used by the Producer Price Index (PPI) to produce the NAICS primary products indexes.

Import Price Indexes - Products have been classified by the Harmonized Tariff Schedule of the United States Annotated (TSUSA). Import prices are based on U.S. dollar prices paid by the U.S. importer. The prices are generally either "free on board" (f.o.b.) foreign port or "cost, insurance, and freight" (c.i.f.) U.S. port transaction prices, depending on the practices of the individual industry. The index for crude petroleum is calculated from data collected by the U.S. Department of Energy.

Export Price Indexes - Products have been classified by the Harmonized Schedule B classification system of the U.S. Bureau of the Census. The prices used are generally either "free alongside ship" (f.a.s.) factory or "free on board" (f.o.b.) transaction prices, depending on the practices of the individual industry. Prices used in the grain index, excluding rice, are obtained from the U.S. Department of Agriculture.

Services Price Indexes - Starting in September 2008, the import air passenger fares indexes represent changes in the average revenue per passenger received by foreign carriers from U.S. residents and are calculated from data obtained from an airline consulting service. These data include tickets sold by travel agencies and travel websites. Tickets sold directly by the airlines are excluded, as are frequent flyer tickets generally. Starting in January 2008, the export air passenger fares indexes represent changes in the average revenue per passenger received by U.S. carriers from foreign residents and are calculated from data collected directly from airlines. These data include frequent flyer tickets and those sold by consolidators. Taxes and fees are included in the import air passenger fares indexes and excluded from the export air passenger fares indexes. The air freight indexes are calculated from data collected directly from airlines. These data exclude mail and passenger baggage. The scope of the service being priced is the movement of freight from airport to airport only, and does not include any ground transportation or port service. The air freight indexes are presented using two definitions: balance of payments (which represent transactions between U.S. and foreign residents) and international (which represent transactions inbound to and outbound from the U.S.). Fact sheets specifying detailed information for each services industry are available at www.bls.gov/mxp under "MXP Publications."

Import Indexes by Locality of Origin - Prices used in these indexes are a subset of the data collected for the import price indexes. Beginning with January 2002, the indexes are defined by locality of origin using a nomenclature based upon the North American Industry Classification System (NAICS). Nonmanufactured goods are defined as NAICS 11 and 21, and manufactured goods are defined as NAICS 31-33.

Relative Importance - A relative importance is a specific index's price-updated value share (expressed as a percentage) of overall imports or exports at a specific point in time. Relative importance values are affected by the trade weights at the point indexes are reweighted and index changes relative to other indexes since the reweight point. If an index is rising in value relative to other indexes over time, the relative importance will increase as well.

Revision Policy - To reflect the availability of late reports and corrections by respondents, monthly data may be revised in each of the 3 months after original publication. After 3 months, no further data revisions take place. For example, data first published in the January release will be subject to revision in the releases for February, March, and April.

Uses of the Data - The primary use of the indexes is to deflate trade statistics, notably the foreign trade sector of the National Income and Product Accounts (NIPA) constructed by the Department of Commerce. Other published indexes are useful for general market analysis. For trade in international services, balance of payments indexes are used for deflating NIPA, while international indexes are more appropriate for market analysis. Merchandise and services indexes also can be used to study U.S. competitiveness and to compute price elasticities, and the merchandise import indexes by country or region of origin are useful in terms of trade analysis.

Email Subscription - The U.S. import and export price indexes news release is available through an email subscription service at www.bls.gov/bls/list.htm.

Additional Information - More detailed data are available on the Import/Export Price Indexes home page at www.bls.gov/mxp. For import and export price indexes data requests, send an email to mxpinfo@bls.gov.

Information from this release will be made available to sensory impaired individuals upon request. Voice phone: (202)-691-5200; Federal Relay Service: 1-(800)-877-8339.