

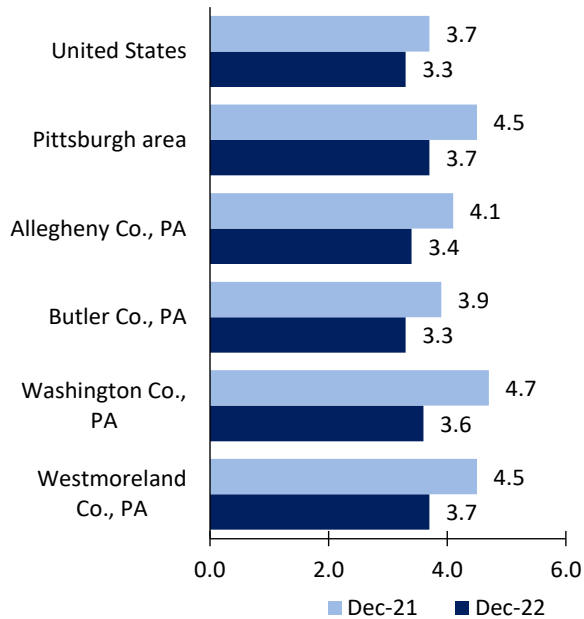
Pittsburgh area Economic Summary

Updated February 01, 2023

This summary presents a sampling of economic information for the area; supplemental data are provided for regions and the nation. Subjects include **unemployment, employment, wages, prices, spending, and benefits**. All data are not seasonally adjusted and some may be subject to revision. Area definitions may differ by subject. For more area summaries and geographic definitions, see www.bls.gov/regions/economic-summaries.htm.

Unemployment rates for the nation and selected areas

Unemployment rates

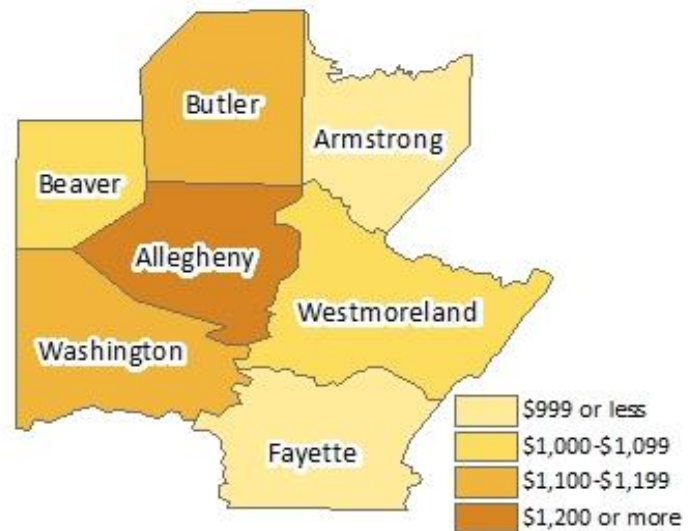


Source: U.S. BLS, Local Area Unemployment Statistics.

Average weekly wages for all industries by county

Pittsburgh area, second quarter 2022

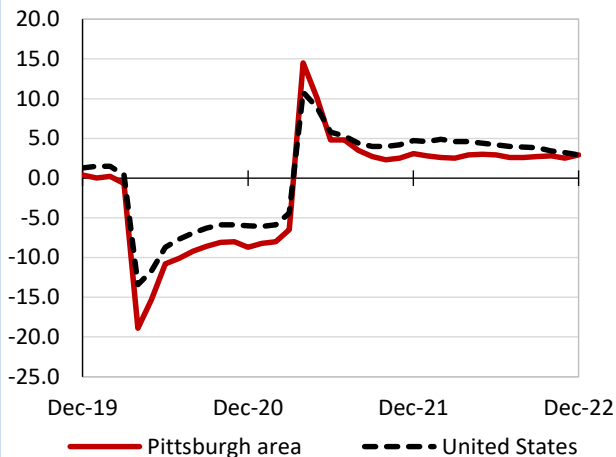
(U.S. = \$1,294; Area = \$1,255)



Source: U.S. BLS, Quarterly Census of Employment and Wages.

Over-the-year changes in employment on nonfarm payrolls and employment by major industry sector

12-month percent changes in employment



Source: U.S. BLS, Current Employment Statistics.

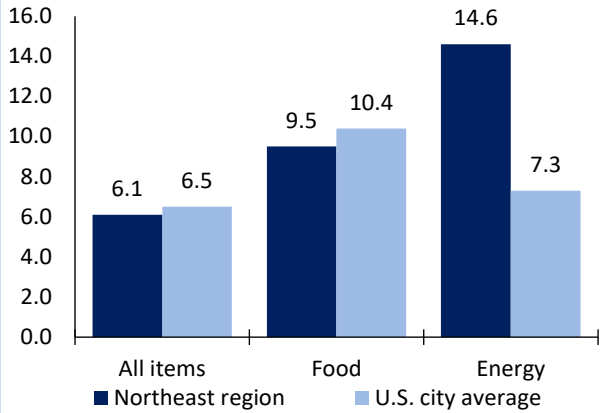
Pittsburgh area employment (number in thousands)	Dec. 2022	Change from Dec. 2021 to Dec. 2022	
		Number	Percent
Total nonfarm	1,162.2	32.7	2.9
Mining and logging	9.0	0.7	8.4
Construction	56.3	-1.0	-1.7
Manufacturing	84.5	4.7	5.9
Trade, transportation, and utilities	211.0	1.6	0.8
Information	21.0	0.0	0.0
Financial activities	77.0	3.0	4.1
Professional and business services	189.5	11.6	6.5
Education and health services	239.6	-0.3	-0.1
Leisure and hospitality	114.6	10.3	9.9
Other services	46.0	0.6	1.3
Government	113.7	1.5	1.3

Source: U.S. BLS, Current Employment Statistics.



Over-the-year change in the prices paid by urban consumers for selected categories

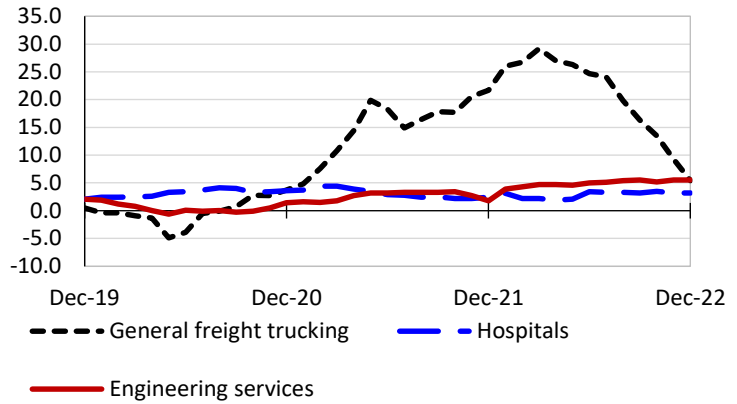
12-month percent change in CPI-U, December 2022



Source: U.S. BLS, Consumer Price Index.

Over-the-year changes in the selling prices received by producers for selected industries nationwide

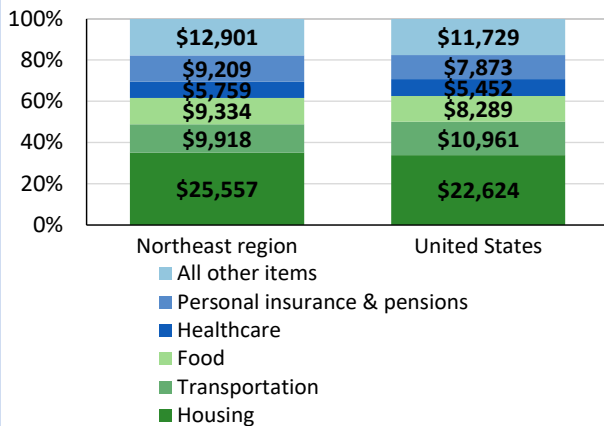
12-month percent changes in PPI



Source: U.S. BLS, Producer Price Index.

Average annual spending and percent distribution for selected categories

Average annual expenditures, United States and Northeast region, 2021



Source: U.S. BLS, Consumer Expenditure Survey.

Average hourly wages for selected occupations

Occupation	Pittsburgh area	United States
All occupations	\$26.95	\$28.01
Civil engineers	46.70	45.91
Accountants and auditors	36.39	40.37
Carpenters	26.79	26.53
Substance abuse, behavioral disorder, and mental health counselors	23.34	25.72
Office clerks, general	19.16	18.75
Cashiers	11.34	12.87

Source: U.S. BLS, Occupational Employment and Wage Statistics, May 2021.

Employer costs per hour worked for wages and selected employee benefits by geographic division

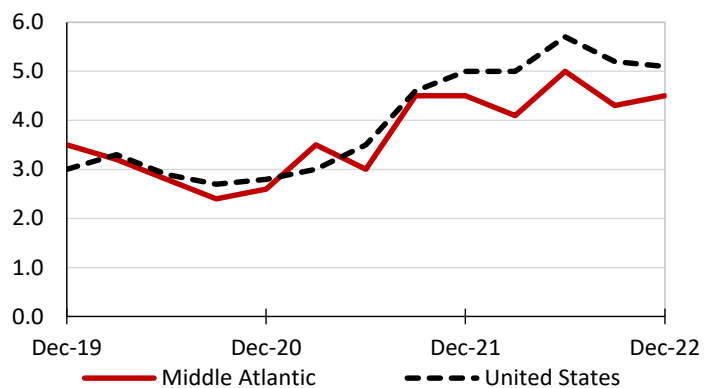
Private industry, September 2022	Middle Atlantic	United States
Total compensation	\$43.71	\$39.61
Wages and salaries	30.16	27.93
Total benefits	13.55	11.68
Paid leave	3.41	2.94
Vacation	1.71	1.51
Supplemental pay	1.55	1.41
Insurance	3.53	3.00
Retirement and savings	1.69	1.35
Legally required benefits	3.37	2.98

(1) The states that compose the Middle Atlantic census division are: NJ, NY, and PA.

Source: U.S. BLS, Employer Costs for Employee Compensation.

Over-the-year changes in wages and salaries

12-month percent changes in ECI



Source: U.S. BLS, Employment Cost Index.

