

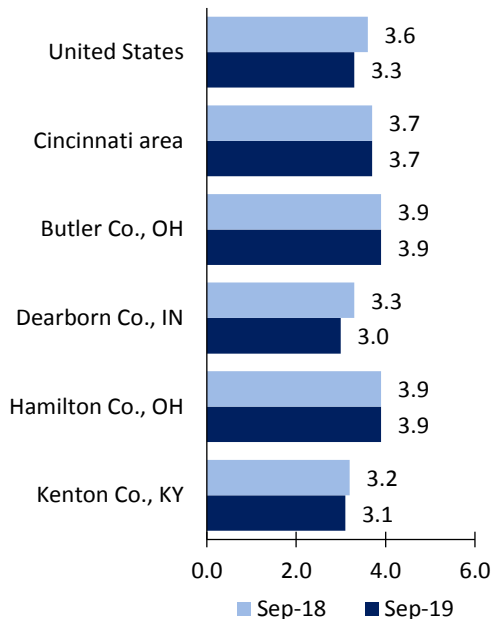
Cincinnati Area Economic Summary

Updated November 12, 2019

This summary presents a sampling of economic information for the area; supplemental data are provided for regions and the nation. Subjects include **unemployment, employment, wages, prices, spending, and benefits**. All data are not seasonally adjusted and some may be subject to revision. Area definitions may differ by subject. For more area summaries and geographic definitions, see www.bls.gov/regions/economic-summaries.htm.

Unemployment rates for the Cincinnati Area, selected area counties, and the nation

Unemployment rates

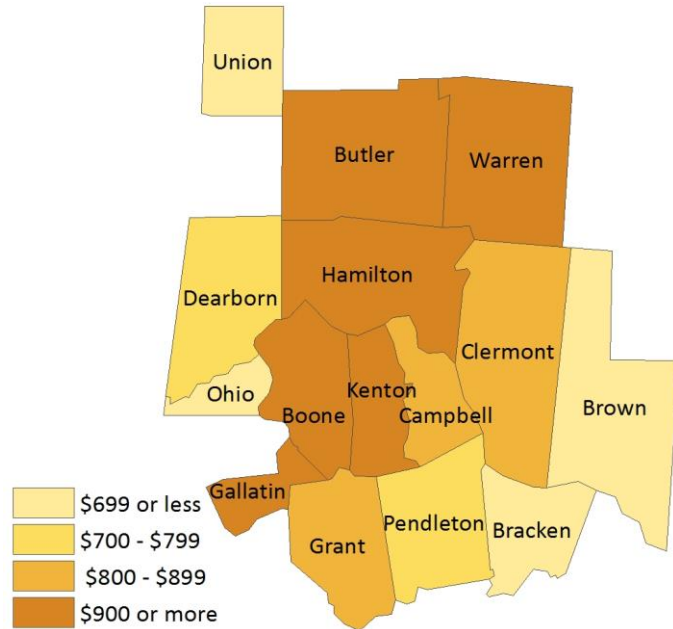


Source: U.S. BLS, Local Area Unemployment Statistics.

Average weekly wages for all industries by county

Cincinnati area, first quarter 2019

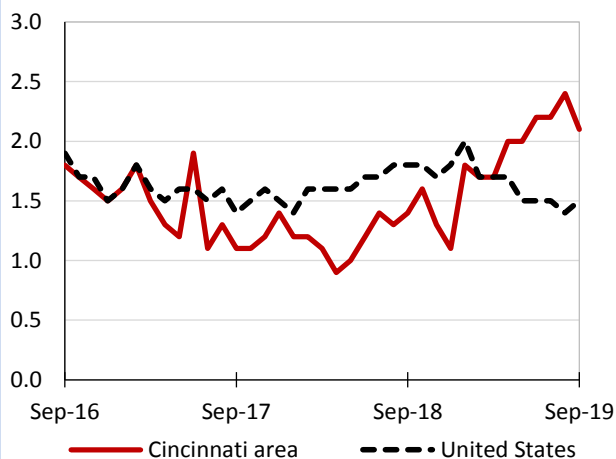
(U.S. = \$1,184; Area = \$1,134)



Source: U.S. BLS, Quarterly Census of Employment and Wages.

Over-the-year changes in employment on nonfarm payrolls and employment by major industry sector

12-month percent changes in employment



Source: U.S. BLS, Current Employment Statistics.

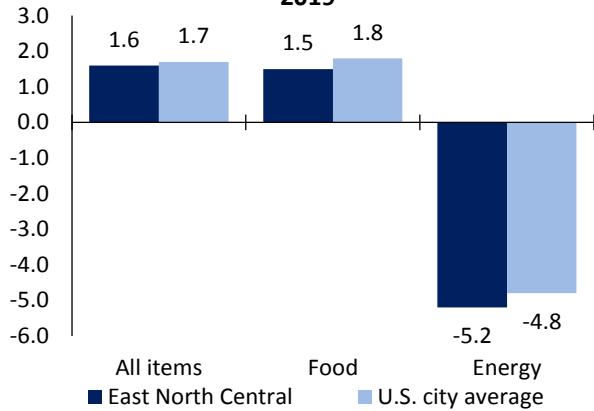
Cincinnati area employment (number in thousands)	Sep. 2019	Change from Sep. 2018 to Sep. 2019	
		Number	Percent
Total nonfarm	1,139.0	23.8	2.1
Mining, logging, and construction	50.2	1.1	2.2
Manufacturing	121.6	2.5	2.1
Trade, transportation, and utilities	220.5	1.4	0.6
Information	13.6	-0.3	-2.2
Financial activities	77.9	4.0	5.4
Professional and business services	177.0	4.0	2.3
Education and health services	173.7	6.6	3.9
Leisure and hospitality	132.4	5.1	4.0
Other services	41.7	-0.2	-0.5
Government	130.4	-0.4	-0.3

Source: U.S. BLS, Current Employment Statistics.



Over-the-year change in the prices paid by urban consumers for selected categories

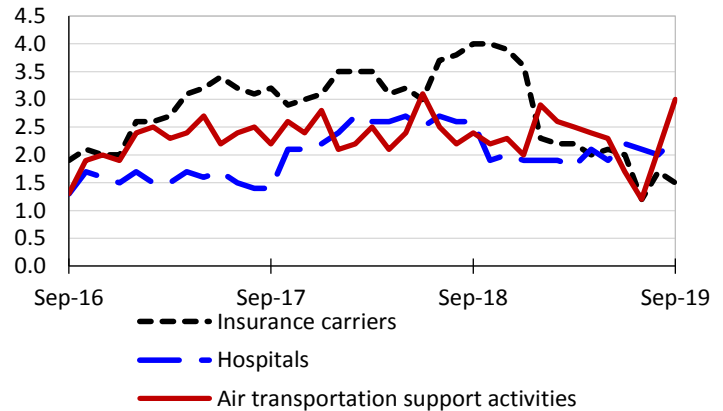
12-month percent change in CPI-U, September 2019



Source: U.S. BLS, Consumer Price Index.

Over-the-year changes in the selling prices received by producers for selected industries nationwide

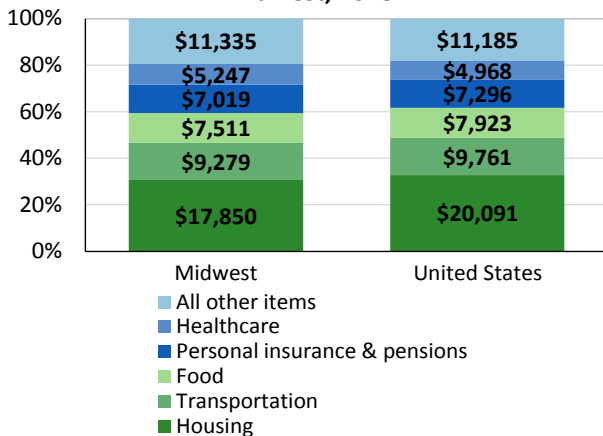
12-month percent changes in PPI



Source: U.S. BLS, Producer Price Index.

Average annual spending and percent distribution for selected categories

Average annual expenditures, United States and Midwest, 2018



Source: U.S. BLS, Consumer Expenditure Survey.

Average hourly wages for selected occupations

Occupation	Cincinnati area	United States
All occupations	\$24.05	\$24.98
Insurance sales agents	29.52	32.64
Engine and other machine assemblers	27.17	21.79
Medical records and health information technicians	24.76	21.16
Insurance claims and policy processing clerks	18.95	20.26
Packers and packagers, hand	12.23	12.74
Waiters and waitresses	10.27	12.42

Source: U.S. BLS, Occupational Employment Statistics, May 2018.

Employer costs per hour worked for wages and selected employee benefits by geographic division

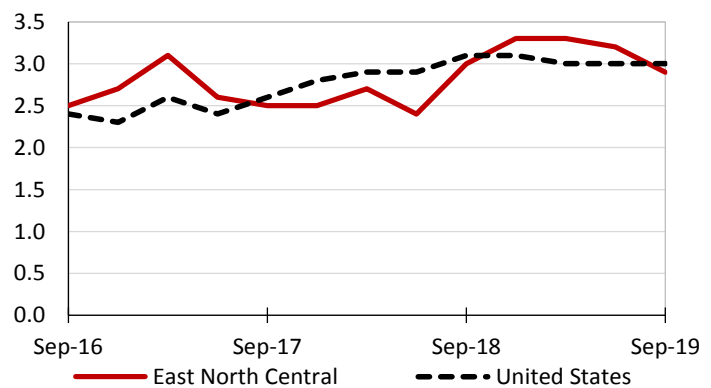
Private industry, June 2019	East North Central	United States
Total compensation	\$31.90	\$34.44
Wages and salaries	22.06	24.14
Total benefits	9.84	10.30
Paid leave	2.15	2.47
Vacation	1.17	1.27
Supplemental pay	1.12	1.11
Insurance	2.81	2.76
Retirement and savings	1.25	1.31
Legally required benefits	2.50	2.66

(1) The states that compose the East North Central census division are: IL, IN, MI, OH, and WI.

Source: U.S. BLS, Employer Costs for Employee Compensation.

Over-the-year changes in wages and salaries

12-month percent changes in ECI



Source: U.S. BLS, Employment Cost Index.

