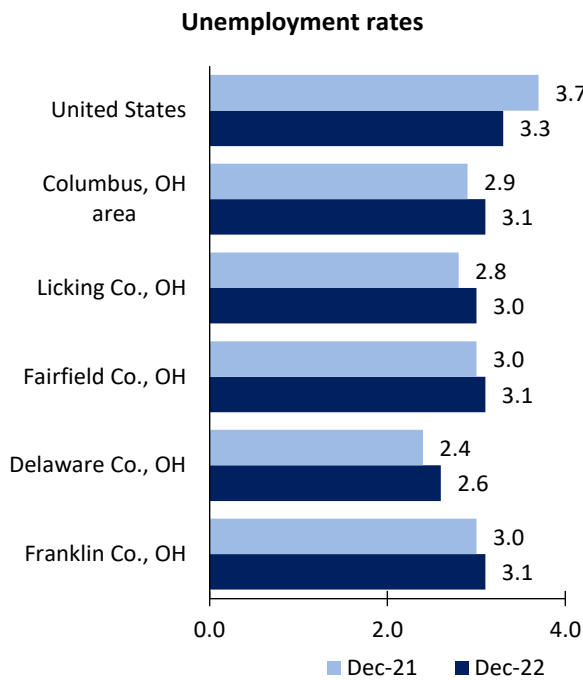


Columbus, OH Area Economic Summary

Updated February 02, 2023

This summary presents a sampling of economic information for the area; supplemental data are provided for regions and the nation. Subjects include **unemployment, employment, wages, prices, spending, and benefits**. All data are not seasonally adjusted and some may be subject to revision. Area definitions may differ by subject. For more area summaries and geographic definitions, see www.bls.gov/regions/economic-summaries.htm.

Unemployment rates for the nation and selected areas

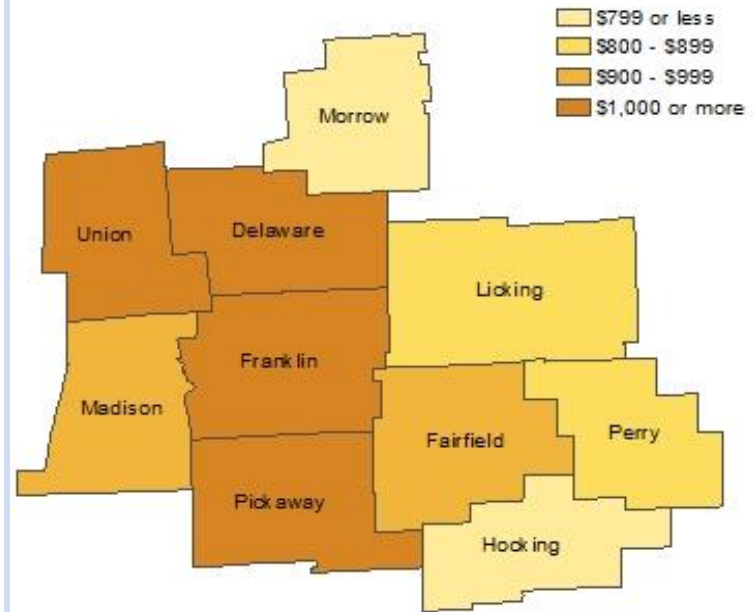


Source: U.S. BLS, Local Area Unemployment Statistics.

Average weekly wages for all industries by county

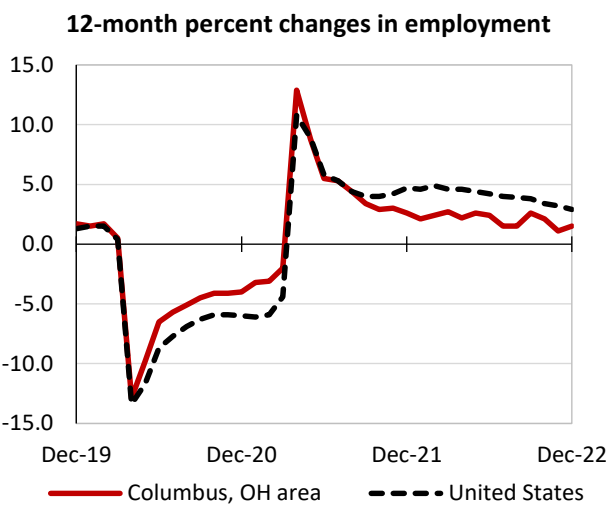
Columbus, OH area, second quarter 2022

(U.S. = \$1,294; Area = \$1,180)



Source: U.S. BLS, Quarterly Census of Employment and Wages.

Over-the-year changes in employment on nonfarm payrolls and employment by major industry sector



Source: U.S. BLS, Current Employment Statistics.

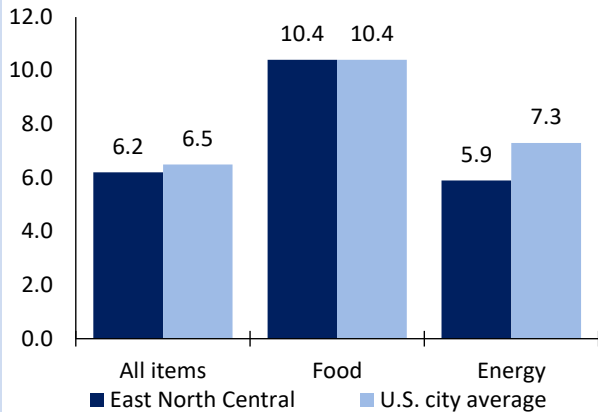
Columbus, OH area employment (number in thousands)	Dec. 2022	Change from Dec. 2021 to Dec. 2022	
		Number	Percent
Total nonfarm	1,134.0	17.2	1.5
Mining, logging, and construction	46.4	2.2	5.0
Manufacturing	73.4	1.6	2.2
Trade, transportation, and utilities	245.0	3.3	1.4
Information	17.0	0.6	3.7
Financial activities	85.6	-0.9	-1.0
Professional and business services	177.7	-3.8	-2.1
Education and health services	163.8	4.1	2.6
Leisure and hospitality	100.8	2.5	2.5
Other services	42.5	2.1	5.2
Government	181.8	5.5	3.1

Source: U.S. BLS, Current Employment Statistics.



Over-the-year change in the prices paid by urban consumers for selected categories

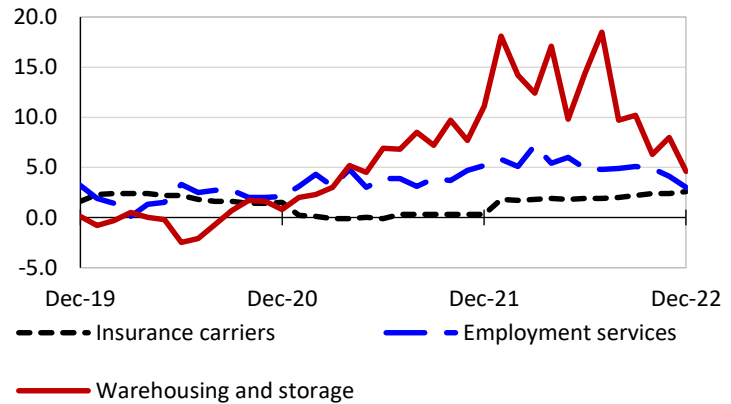
12-month percent change in CPI-U, December 2022



Source: U.S. BLS, Consumer Price Index.

Over-the-year changes in the selling prices received by producers for selected industries nationwide

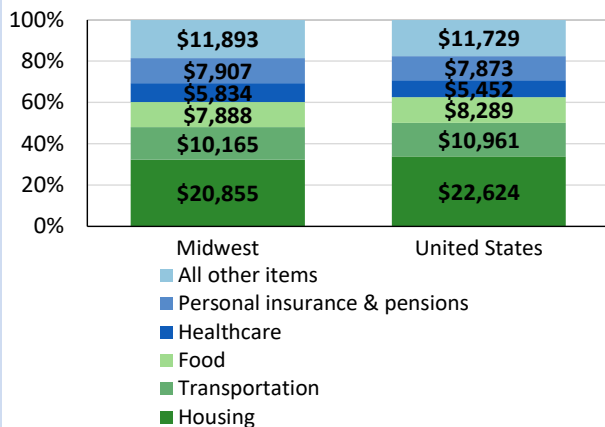
12-month percent changes in PPI



Source: U.S. BLS, Producer Price Index.

Average annual spending and percent distribution for selected categories

Average annual expenditures, United States and Midwest, 2021



Source: U.S. BLS, Consumer Expenditure Survey.

Average hourly wages for selected occupations

Occupation	Columbus, OH area	United States
All occupations	\$26.86	\$28.01
Mechanical engineers	42.29	46.64
Registered nurses	35.23	39.78
Claims adjusters, examiners, and investigators	31.09	34.11
Heavy and tractor-trailer truck drivers	23.50	24.20
Real estate sales agents	22.95	29.56
Customer service representatives	19.04	18.79

Source: U.S. BLS, Occupational Employment and Wage Statistics, May 2021.

Employer costs per hour worked for wages and selected employee benefits by geographic division

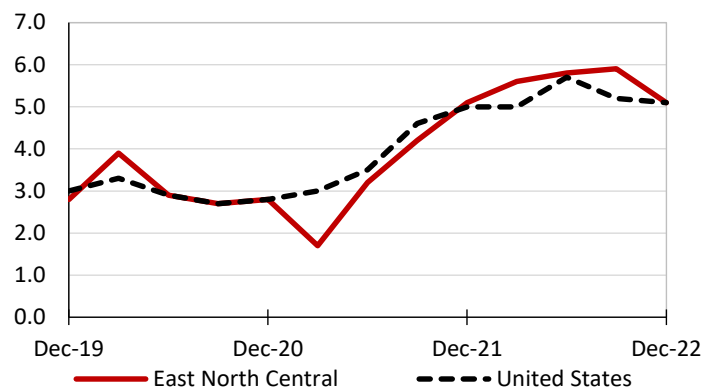
Private industry, September 2022	East North Central (1)	United States
Total compensation	\$39.46	\$39.61
Wages and salaries	27.25	27.93
Total benefits	12.21	11.68
Paid leave	2.83	2.94
Vacation	1.51	1.51
Supplemental pay	1.63	1.41
Insurance	3.28	3.00
Retirement and savings	1.61	1.35
Legally required benefits	2.87	2.98

(1) The states that compose the East North Central census division are: IL, IN, MI, OH, and WI.

Source: U.S. BLS, Employer Costs for Employee Compensation.

Over-the-year changes in wages and salaries

12-month percent changes in ECI



Source: U.S. BLS, Employment Cost Index.

