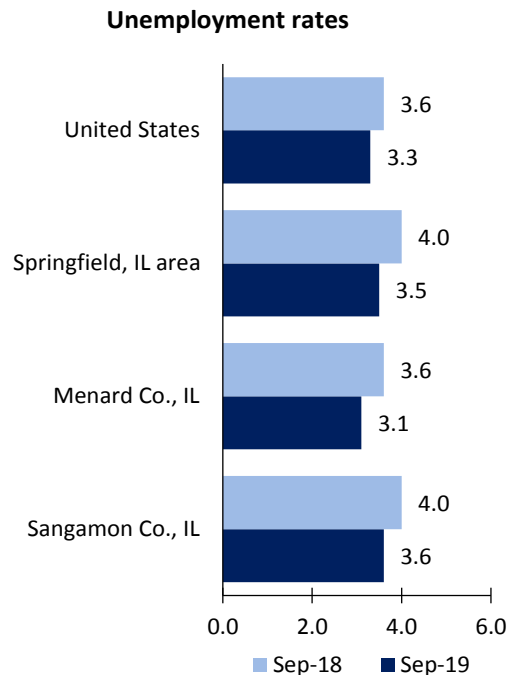


Springfield, IL Area Economic Summary

Updated November 12, 2019

This summary presents a sampling of economic information for the area; supplemental data are provided for regions and the nation. Subjects include **unemployment, employment, wages, prices, spending, and benefits**. All data are not seasonally adjusted and some may be subject to revision. Area definitions may differ by subject. For more area summaries and geographic definitions, see www.bls.gov/regions/economic-summaries.htm.

Unemployment rates for the Springfield, IL Area, selected area counties, and the nation

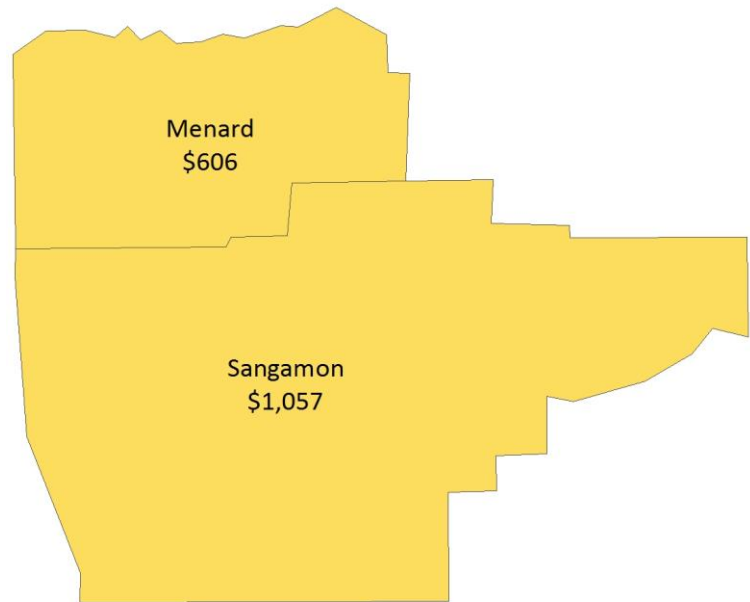


Source: U.S. BLS, Local Area Unemployment Statistics.

Average weekly wages for all industries by county

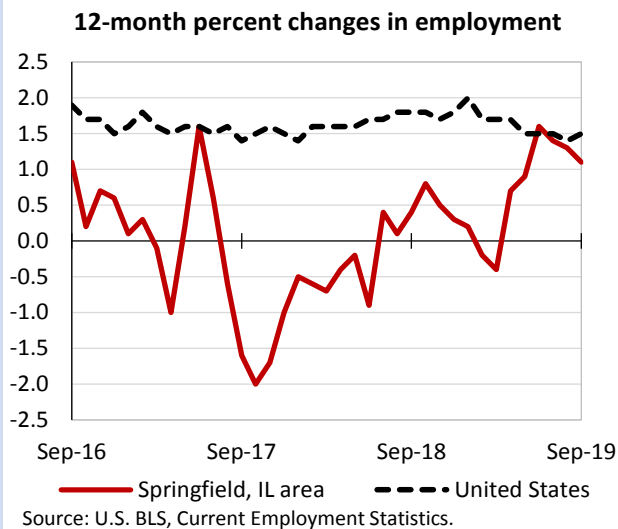
Springfield, IL area, first quarter 2019

(U.S. = \$1,184; Area = \$1,051)



Source: U.S. BLS, Quarterly Census of Employment and Wages.

Over-the-year changes in employment on nonfarm payrolls and employment by major industry sector



Source: U.S. BLS, Current Employment Statistics.

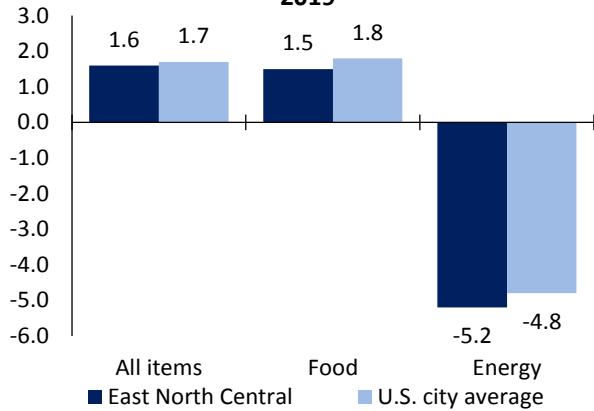
Springfield, IL area employment (number in thousands)	Sep. 2019	Change from Sep. 2018 to Sep. 2019	
		Number	Percent
Total nonfarm	116.5	1.3	1.1
Mining, logging, and construction	4.3	0.1	2.4
Manufacturing	3.4	0.0	0.0
Trade, transportation, and utilities	16.9	-0.1	-0.6
Information	2.6	0.0	0.0
Financial activities	6.4	0.0	0.0
Professional and business services	12.7	-0.1	-0.8
Education and health services	21.5	0.3	1.4
Leisure and hospitality	11.7	0.7	6.4
Other services	6.9	0.1	1.5
Government	30.1	0.3	1.0

Source: U.S. BLS, Current Employment Statistics.



Over-the-year change in the prices paid by urban consumers for selected categories

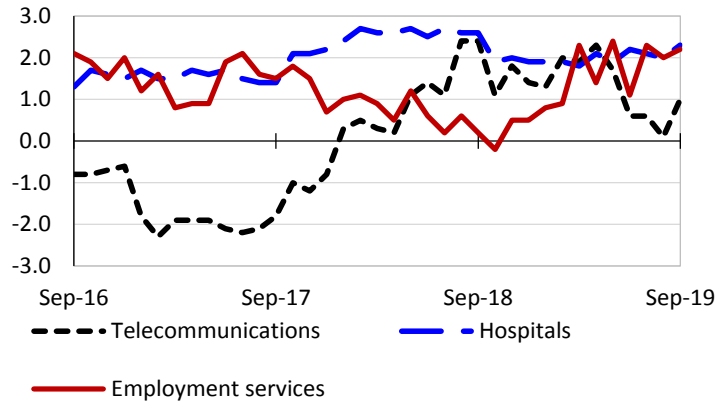
12-month percent change in CPI-U, September 2019



Source: U.S. BLS, Consumer Price Index.

Over-the-year changes in the selling prices received by producers for selected industries nationwide

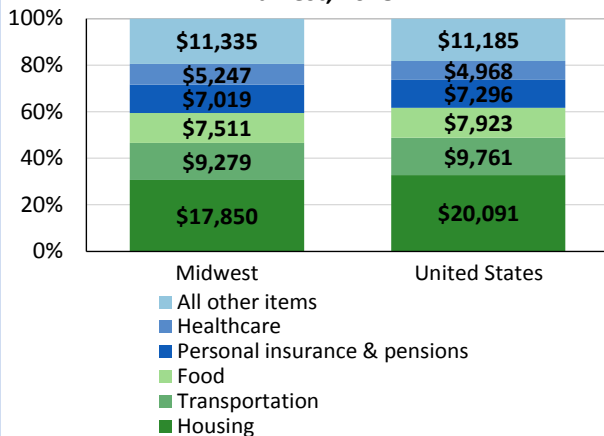
12-month percent changes in PPI



Source: U.S. BLS, Producer Price Index.

Average annual spending and percent distribution for selected categories

Average annual expenditures, United States and Midwest, 2018



Source: U.S. BLS, Consumer Expenditure Survey.

Average hourly wages for selected occupations

Occupation	Springfield, IL area	United States
All occupations	\$24.31	\$24.98
Accountants and auditors	36.52	37.89
Automotive service technicians and mechanics	18.79	21.02
Office clerks, general	18.19	16.92
Welders, cutters, solderers, and brazers	16.35	21.33
Light truck or delivery services drivers	15.43	17.75
Waiters and waitresses	10.45	12.42

Source: U.S. BLS, Occupational Employment Statistics, May 2018.

Employer costs per hour worked for wages and selected employee benefits by geographic division

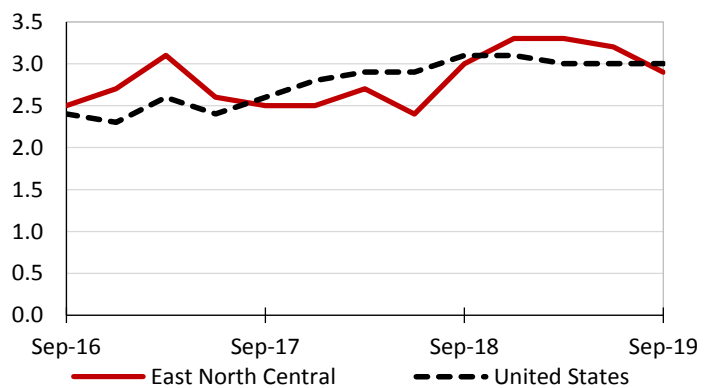
Private industry, June 2019	East North Central	United States
Total compensation	\$31.90	\$34.44
Wages and salaries	22.06	24.14
Total benefits	9.84	10.30
Paid leave	2.15	2.47
Vacation	1.17	1.27
Supplemental pay	1.12	1.11
Insurance	2.81	2.76
Retirement and savings	1.25	1.31
Legally required benefits	2.50	2.66

(1) The states that compose the East North Central census division are: IL, IN, MI, OH, and WI.

Source: U.S. BLS, Employer Costs for Employee Compensation.

Over-the-year changes in wages and salaries

12-month percent changes in ECI



Source: U.S. BLS, Employment Cost Index.

