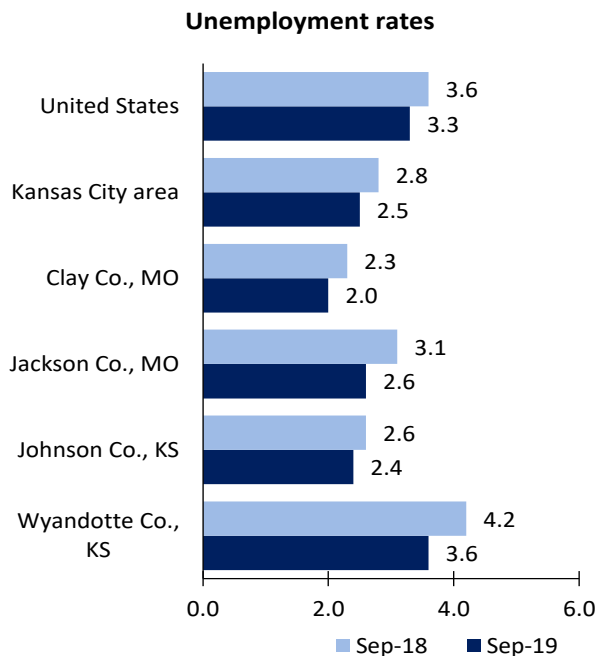


Kansas City Area Economic Summary

Updated November 15, 2019

This summary presents a sampling of economic information for the area; supplemental data are provided for regions and the nation. Subjects include **unemployment, employment, wages, prices, spending, and benefits**. All data are not seasonally adjusted and some may be subject to revision. Area definitions may differ by subject. For more area summaries and geographic definitions, see www.bls.gov/regions/economic-summaries.htm.

Unemployment rates for the Kansas City Area, selected area counties, and the nation

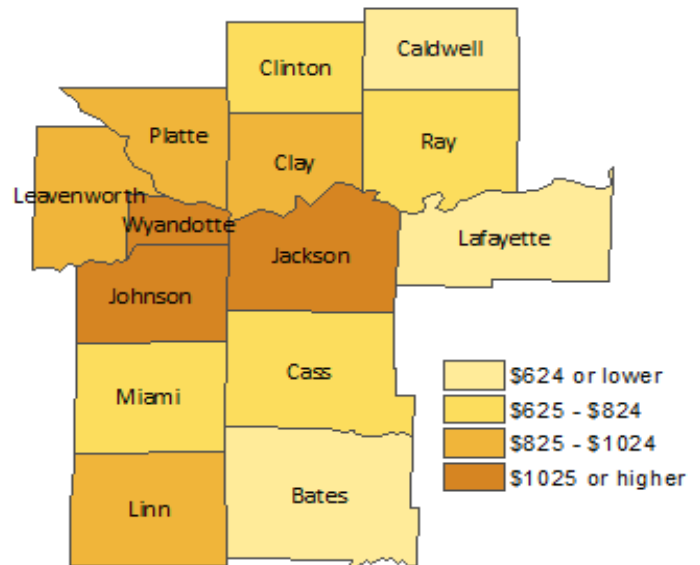


Source: U.S. BLS, Local Area Unemployment Statistics.

Average weekly wages for all industries by county

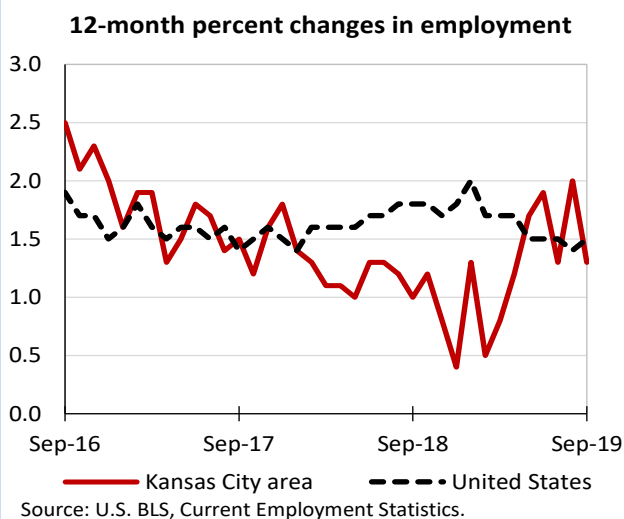
Kansas City area, first quarter 2019

(U.S. = \$1,184; Area = \$1,076)



Source: U.S. BLS, Quarterly Census of Employment and Wages.

Over-the-year changes in employment on nonfarm payrolls and employment by major industry sector



Source: U.S. BLS, Current Employment Statistics.

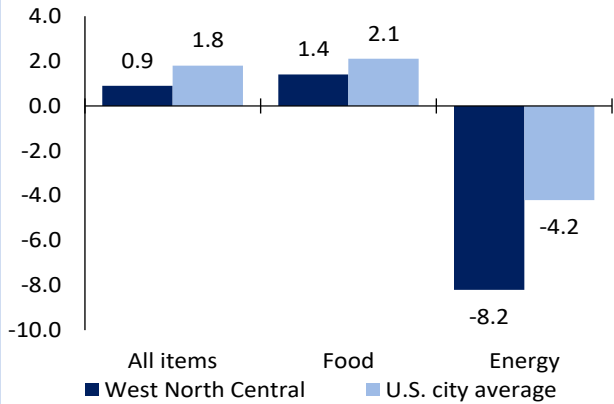
| Kansas City area employment (number in thousands) | Sep. 2019 | Change from Sep. 2018 to Sep. 2019 | |
|--|--------------|---------------------------------------|---------|
| | | Number | Percent |
| Total nonfarm | 1,119.3 | 14.9 | 1.3 |
| Mining, logging, and construction | 54.1 | 2.7 | 5.3 |
| Manufacturing | 76.2 | -1.5 | -1.9 |
| Trade, transportation, and utilities | 212.8 | -3.2 | -1.5 |
| Information | 15.5 | -1.0 | -6.1 |
| Financial activities | 78.9 | -0.4 | -0.5 |
| Professional and business services | 200.0 | 4.3 | 2.2 |
| Education and health services | 164.5 | 9.0 | 5.8 |
| Leisure and hospitality | 111.8 | -0.6 | -0.5 |
| Other services | 42.6 | 0.1 | 0.2 |
| Government | 162.9 | 5.5 | 3.5 |

Source: U.S. BLS, Current Employment Statistics.



Over-the-year change in the prices paid by urban consumers for selected categories

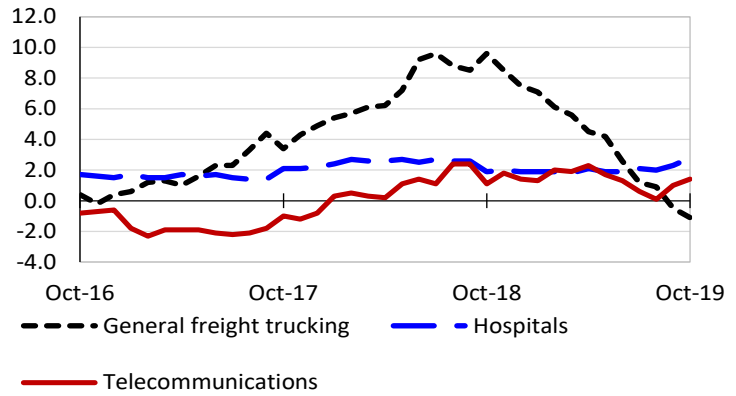
12-month percent change in CPI-U, October 2019



Source: U.S. BLS, Consumer Price Index.

Over-the-year changes in the selling prices received by producers for selected industries nationwide

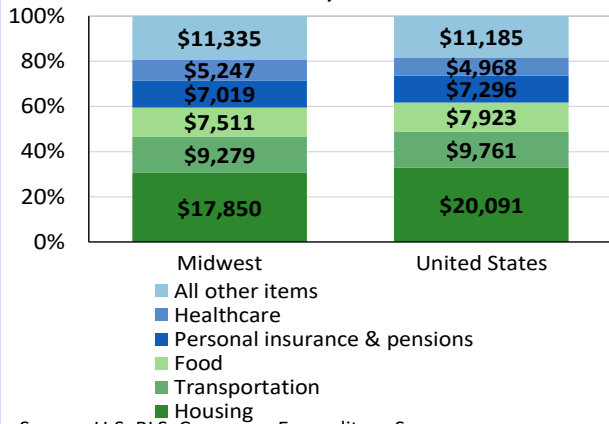
12-month percent changes in PPI



Source: U.S. BLS, Producer Price Index.

Average annual spending and percent distribution for selected categories

Average annual expenditures, United States and Midwest, 2018



Source: U.S. BLS, Consumer Expenditure Survey.

Average hourly wages for selected occupations

| Occupation | Kansas City area | United States |
|-------------------------|------------------|---------------|
| All occupations | \$24.14 | \$24.98 |
| Air traffic controllers | 60.16 | 58.09 |
| Actuaries | 57.53 | 55.89 |
| Electrical engineers | 44.15 | 48.85 |
| Computer programmers | 36.59 | 43.07 |
| File clerks | 16.17 | 16.25 |
| Childcare workers | 10.88 | 11.83 |

Source: U.S. BLS, Occupational Employment Statistics, May 2018.

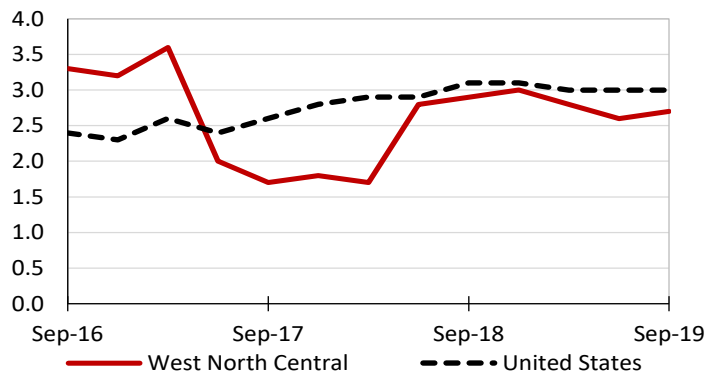
Employer costs per hour worked for wages and selected employee benefits by geographic division

| Private industry, June 2019 | West North Central | United States |
|-----------------------------|--------------------|---------------|
| Total compensation | \$31.37 | \$34.44 |
| Wages and salaries | 21.90 | 24.14 |
| Total benefits | 9.47 | 10.30 |
| Paid leave | 2.17 | 2.47 |
| Vacation | 1.16 | 1.27 |
| Supplemental pay | 1.02 | 1.11 |
| Insurance | 2.71 | 2.76 |
| Retirement and savings | 1.11 | 1.31 |
| Legally required benefits | 2.47 | 2.66 |

(1) The states that compose the West North Central census division are: IA, KS, MN, MO, NE, ND, and SD.
Source: U.S. BLS, Employer Costs for Employee Compensation.

Over-the-year changes in wages and salaries

12-month percent changes in ECI



Source: U.S. BLS, Employment Cost Index.

