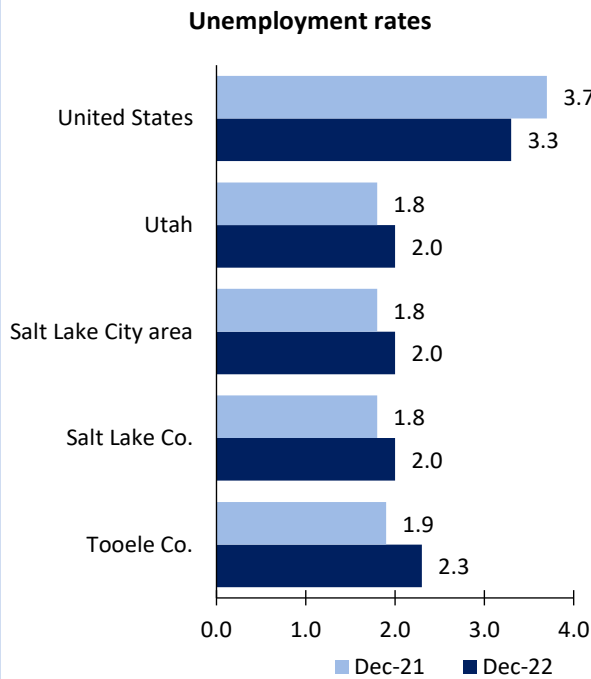


# Salt Lake City Area Economic Summary

Updated February 03, 2023

This summary presents a sampling of economic information for the area; supplemental data are provided for regions and the nation. Subjects include **unemployment, employment, wages, prices, spending, and benefits**. All data are not seasonally adjusted and some may be subject to revision. Area definitions may differ by subject. For more area summaries and geographic definitions, see [www.bls.gov/regions/economic-summaries.htm](http://www.bls.gov/regions/economic-summaries.htm).

## Unemployment rates for the nation and selected areas



Source: U.S. BLS, Local Area Unemployment Statistics.

## Average weekly wages for all industries by county

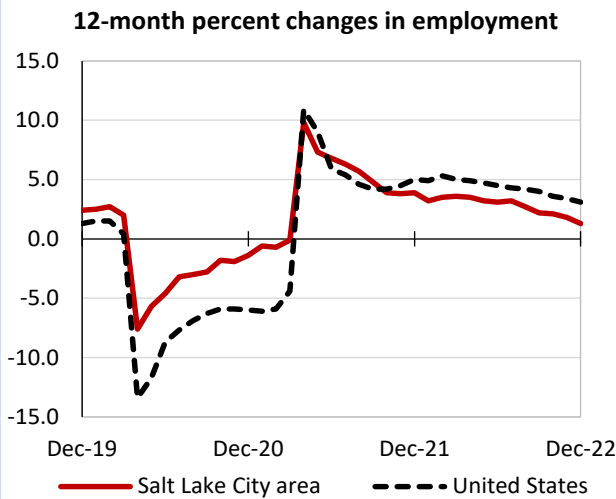
Salt Lake City area, second quarter 2022

(U.S. = \$1,294; Area = \$1,293)



Source: U.S. BLS, Quarterly Census of Employment and Wages.

## Over-the-year changes in employment on nonfarm payrolls and employment by major industry sector



Source: U.S. BLS, Current Employment Statistics.

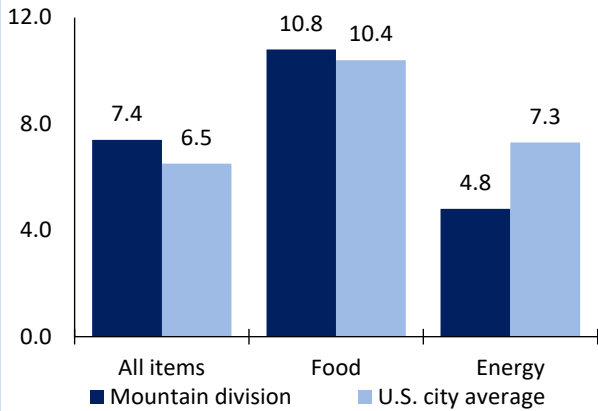
Salt Lake City area employment (number in thousands)	Dec. 2022	Change from Dec. 2021 to Dec. 2022	
		Number	Percent
Total nonfarm	797.1	10.6	1.3
Mining, logging, and construction	58.2	4.0	7.4
Manufacturing	63.2	1.4	2.3
Trade, transportation, and utilities	169.2	4.9	3.0
Information	24.3	1.6	7.0
Financial activities	60.1	-4.2	-6.5
Professional and business services	137.3	1.9	1.4
Education and health services	93.0	1.5	1.6
Leisure and hospitality	64.0	2.2	3.6
Other services	22.5	0.1	0.4
Government	105.3	-2.8	-2.6

Source: U.S. BLS, Current Employment Statistics.



Over-the-year change in the prices paid by urban consumers for selected categories

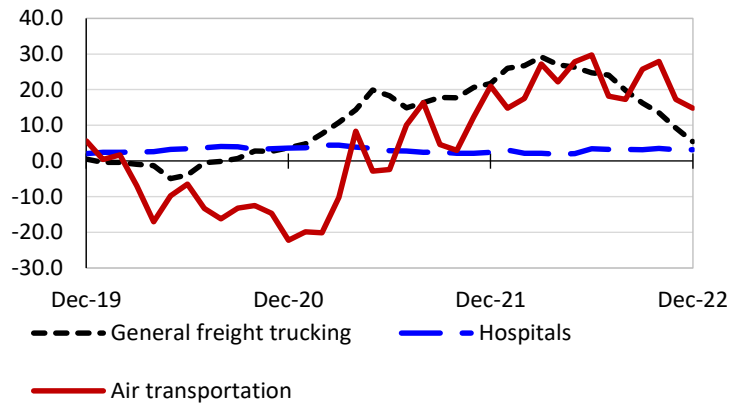
**12-month percent change in CPI-U, December 2022**



Source: U.S. BLS, Consumer Price Index.

Over-the-year changes in the selling prices received by producers for selected industries nationwide

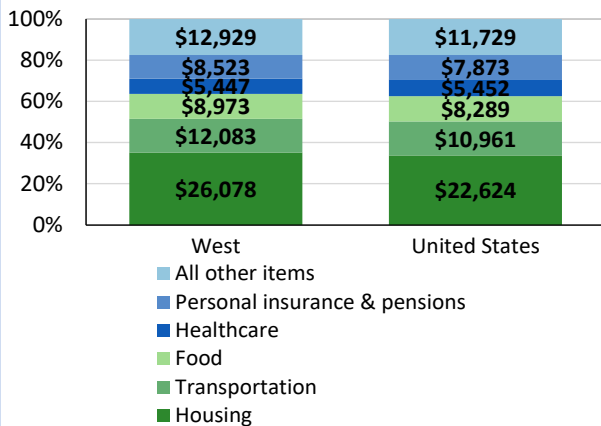
**12-month percent changes in PPI**



Source: U.S. BLS, Producer Price Index.

Average annual spending and percent distribution for selected categories

**Average annual expenditures, United States and West, 2021**



Source: U.S. BLS, Consumer Expenditure Survey.

Average hourly wages for selected occupations

Occupation	Salt Lake City	United States
All occupations	\$27.72	\$28.01
Physician assistants	56.43	57.43
Web and digital interface designers	40.14	45.90
Accountants and auditors	35.97	40.37
Customer service representatives	19.08	18.79
Shipping, receiving, and inventory clerks	16.45	18.37
Retail salespersons	16.05	15.35

Source: U.S. BLS, Occupational Employment and Wage Statistics, May 2021.

Employer costs per hour worked for wages and selected employee benefits by geographic division

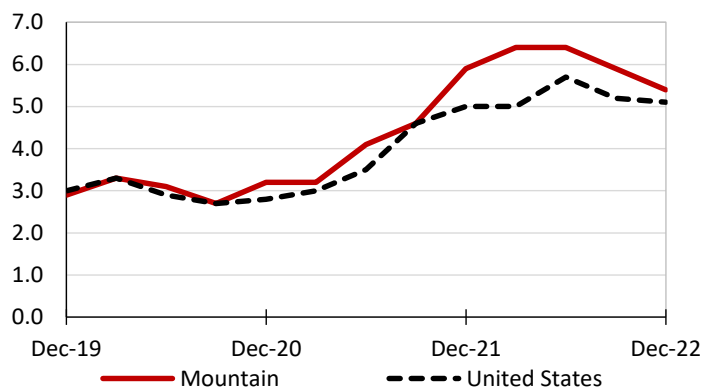
Private industry, September 2022	Mountain (1)	United States
Total compensation	\$36.20	\$39.61
Wages and salaries	25.68	27.93
Total benefits	10.52	11.68
Paid leave	2.50	2.94
Vacation	1.28	1.51
Supplemental pay	1.23	1.41
Insurance	2.87	3.00
Retirement and savings	1.18	1.35
Legally required benefits	2.75	2.98

(1) The states that compose the Mountain census division are: AZ, CO, ID, MT, NV, NM, UT, and WY.

Source: U.S. BLS, Employer Costs for Employee Compensation.

Over-the-year changes in wages and salaries

**12-month percent changes in ECI**



Source: U.S. BLS, Employment Cost Index.

