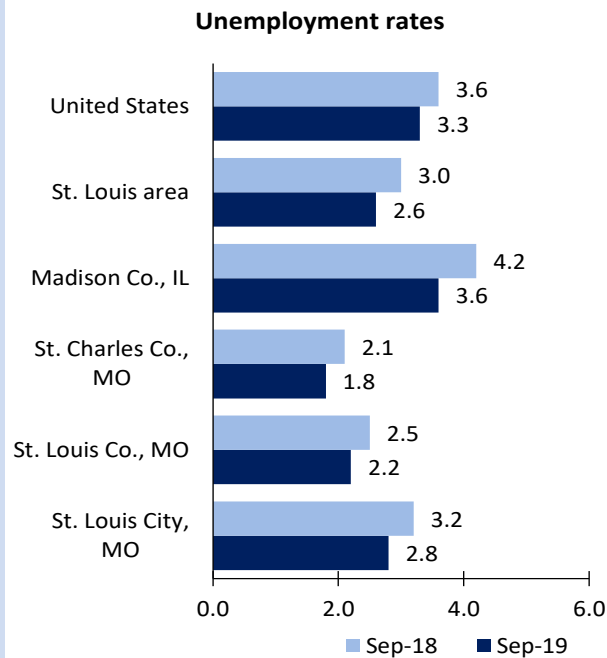


St. Louis Area Economic Summary

Updated November 15, 2019

This summary presents a sampling of economic information for the area; supplemental data are provided for regions and the nation. Subjects include **unemployment, employment, wages, prices, spending, and benefits**. All data are not seasonally adjusted and some may be subject to revision. Area definitions may differ by subject. For more area summaries and geographic definitions, see www.bls.gov/regions/economic-summaries.htm.

Unemployment rates for the St. Louis Area, selected area counties, and the nation

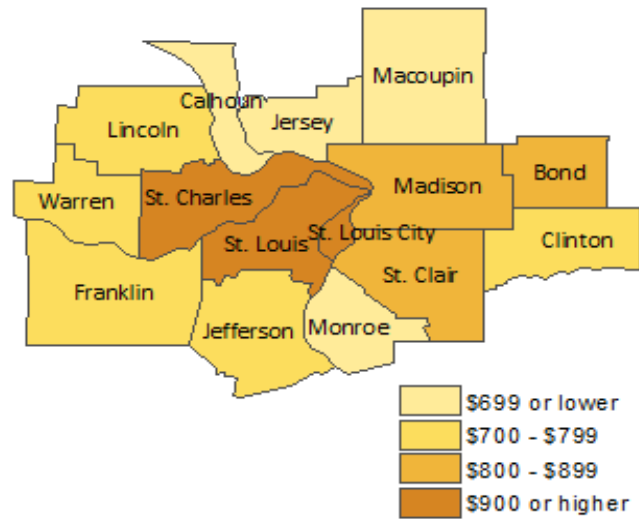


Source: U.S. BLS, Local Area Unemployment Statistics.

Average weekly wages for all industries by county

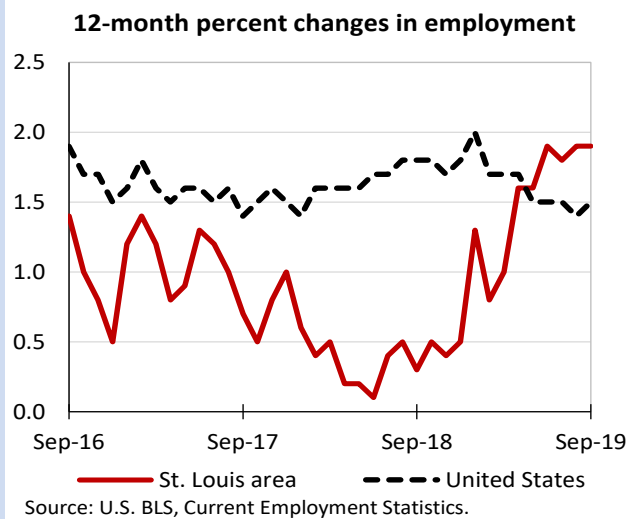
St. Louis area, first quarter 2019

(U.S. = \$1,184; Area = \$1,107)



Source: U.S. BLS, Quarterly Census of Employment and Wages.

Over-the-year changes in employment on nonfarm payrolls and employment by major industry sector



Source: U.S. BLS, Current Employment Statistics.

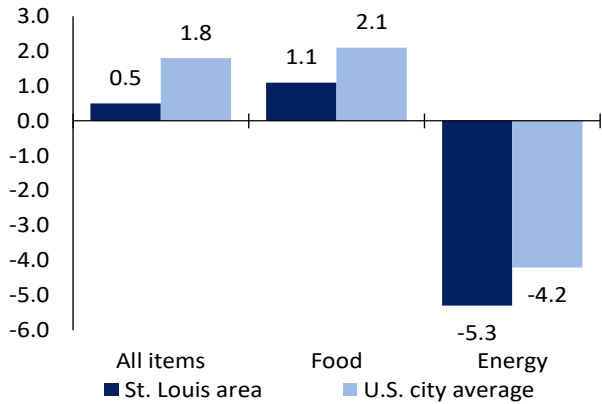
St. Louis area employment (number in thousands)	Sep. 2019	Change from Sep. 2018 to Sep. 2019	
		Number	Percent
Total nonfarm	1,416.9	26.3	1.9
Mining, logging, and construction	75.2	5.8	8.4
Manufacturing	121.8	4.2	3.6
Trade, transportation, and utilities	262.9	3.7	1.4
Information	27.7	0.0	0.0
Financial activities	92.0	1.7	1.9
Professional and business services	218.0	2.5	1.2
Education and health services	253.8	0.5	0.2
Leisure and hospitality	160.3	7.1	4.6
Other services	48.7	-1.9	-3.8
Government	156.5	2.7	1.8

Source: U.S. BLS, Current Employment Statistics.



Over-the-year change in the prices paid by urban consumers for selected categories

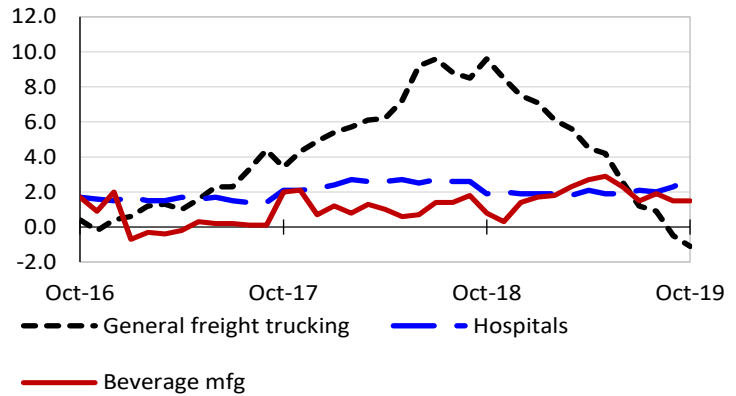
12-month percent change in CPI-U, October 2019



Source: U.S. BLS, Consumer Price Index.

Over-the-year changes in the selling prices received by producers for selected industries nationwide

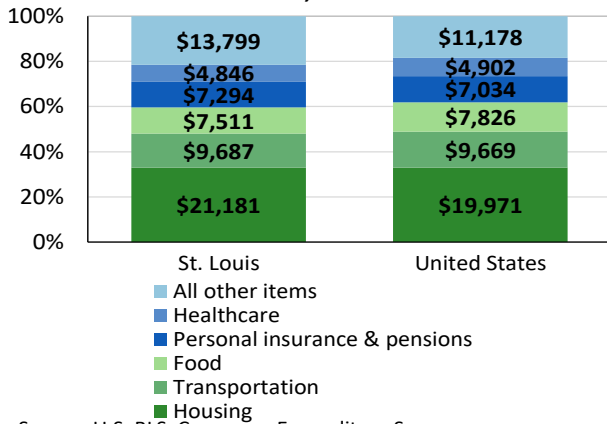
12-month percent changes in PPI



Source: U.S. BLS, Producer Price Index.

Average annual spending and percent distribution for selected categories

Average annual expenditures, United States and St. Louis, 2017-18



Source: U.S. BLS, Consumer Expenditure Survey.

Average hourly wages for selected occupations

Occupation	St. Louis area	United States
All occupations	\$24.16	\$24.98
Financial examiners	34.35	43.42
Respiratory therapy technicians	26.66	24.70
Child, family, and school social workers	20.88	23.92
Computer-controlled machine tool operators, metal and plastic	20.45	20.17
Museum technicians and conservators	19.25	22.53
Cooks, institution and cafeteria	12.59	13.60

Source: U.S. BLS, Occupational Employment Statistics, May 2018.

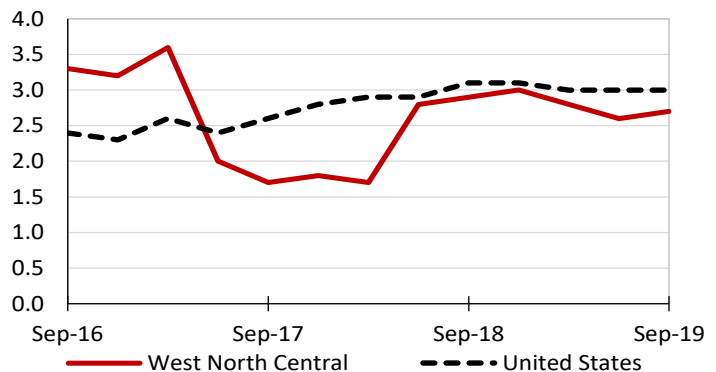
Employer costs per hour worked for wages and selected employee benefits by geographic division

Private industry, June 2019	West North Central	United States
Total compensation	\$31.37	\$34.44
Wages and salaries	21.90	24.14
Total benefits	9.47	10.30
Paid leave	2.17	2.47
Vacation	1.16	1.27
Supplemental pay	1.02	1.11
Insurance	2.71	2.76
Retirement and savings	1.11	1.31
Legally required benefits	2.47	2.66

(1) The states that compose the West North Central census division are: IA, KS, MN, MO, NE, ND, and SD.
Source: U.S. BLS, Employer Costs for Employee Compensation.

Over-the-year changes in wages and salaries

12-month percent changes in ECI



Source: U.S. BLS, Employment Cost Index.

