

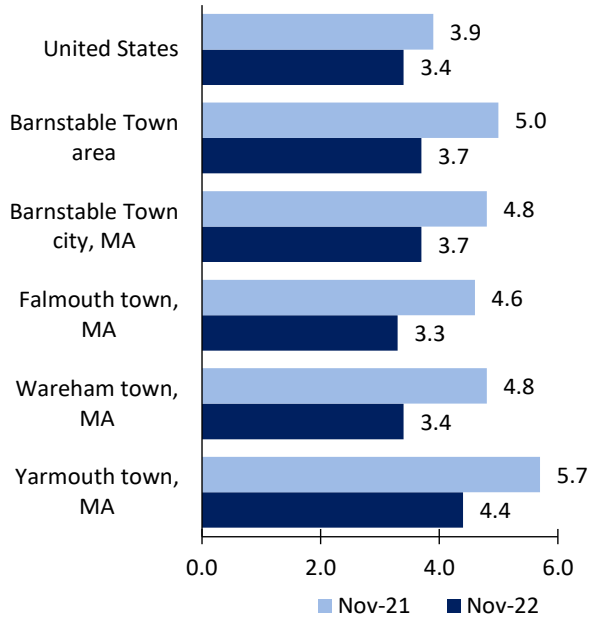
# Barnstable Town, MA, Area Economic Summary

Updated January 17, 2023

This summary presents a sampling of economic information for the area; supplemental data are provided for regions and the nation. Subjects include **unemployment, employment, wages, prices, spending, and benefits**. All data are not seasonally adjusted and some may be subject to revision. Area definitions may differ by subject. For more area summaries and geographic definitions, see [www.bls.gov/regions/economic-summaries.htm](http://www.bls.gov/regions/economic-summaries.htm).

## Unemployment rates for the nation and selected areas

### Unemployment rates

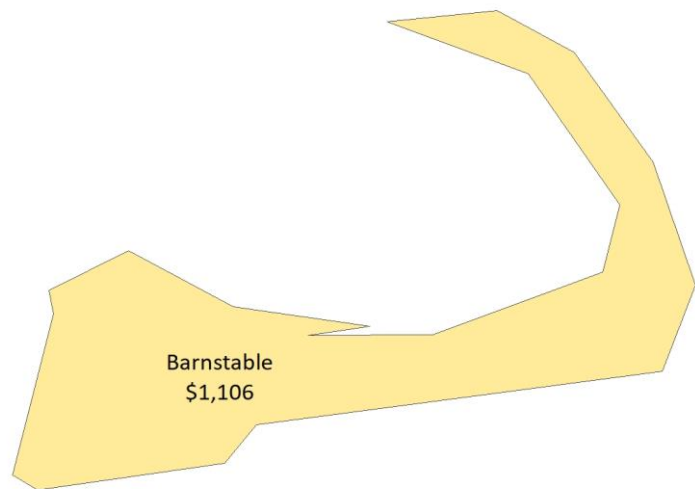


Source: U.S. BLS, Local Area Unemployment Statistics.

## Average weekly wages for all industries by county

### Barnstable Town area, second quarter 2022

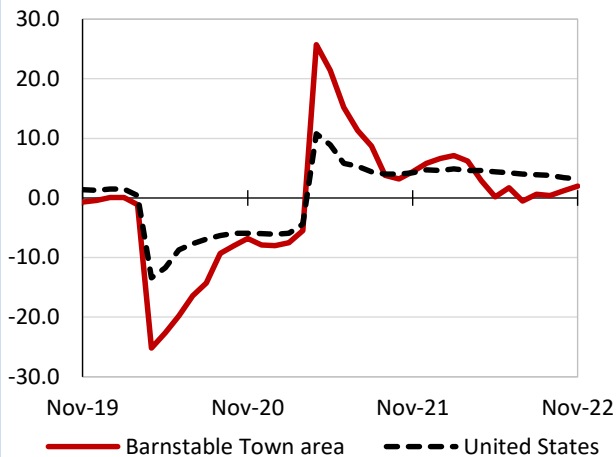
(U.S. = \$1,294; Area = \$1,106)



Source: U.S. BLS, Quarterly Census of Employment and Wages.

## Over-the-year changes in employment on nonfarm payrolls and employment by major industry sector

### 12-month percent changes in employment



Source: U.S. BLS, Current Employment Statistics.

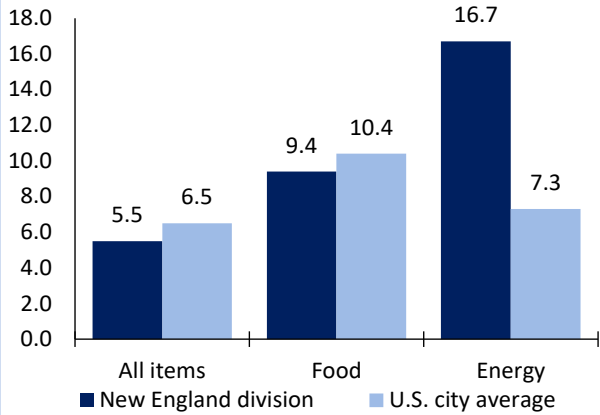
Barnstable Town area employment (number in thousands)	Nov. 2022	Change from Nov. 2021 to Nov. 2022	
		Number	Percent
Total nonfarm	101.6	2.0	2.0
Mining, logging, and construction	7.8	0.1	1.3
Manufacturing	3.1	-0.1	-3.1
Trade, transportation, and utilities	21.3	0.4	1.9
Information	1.2	0.0	0.0
Financial activities	3.8	0.0	0.0
Professional and business services	10.2	0.3	3.0
Education and health services	17.4	0.2	1.2
Leisure and hospitality	16.5	-0.1	-0.6
Other services	4.3	0.0	0.0
Government	16.0	1.2	8.1

Source: U.S. BLS, Current Employment Statistics.



Over-the-year change in the prices paid by urban consumers for selected categories

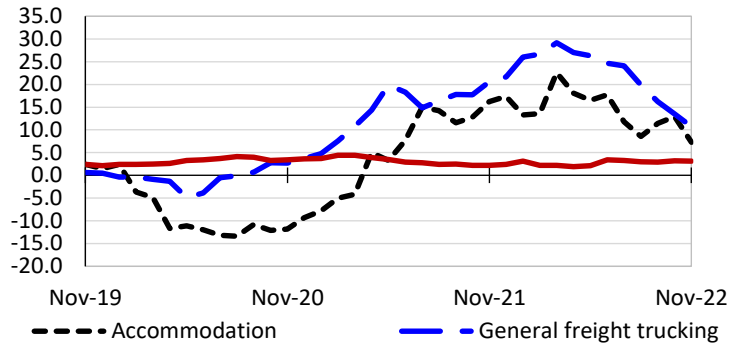
12-month percent change in CPI-U, December 2022



Source: U.S. BLS, Consumer Price Index.

Over-the-year changes in the selling prices received by producers for selected industries nationwide

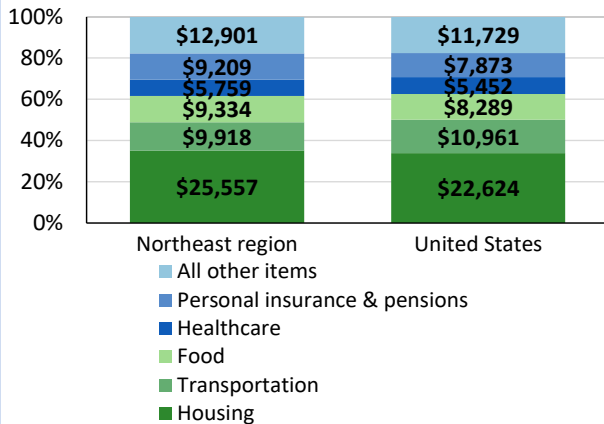
12-month percent changes in PPI



Source: U.S. BLS, Producer Price Index.

Average annual spending and percent distribution for selected categories

Average annual expenditures, United States and Northeast region, 2021



Source: U.S. BLS, Consumer Expenditure Survey.

Average hourly wages for selected occupations

Occupation	Barnstable Town area	United States
All occupations	\$28.72	\$28.01
Landscaping and groundskeeping workers	20.50	16.94
Waiters and waitresses	18.39	13.95
Nursing assistants	18.20	15.99
Maids and housekeeping cleaners	18.10	14.22
Stockers and order fillers	17.34	15.87
Cashiers	15.29	12.87

Source: U.S. BLS, Occupational Employment and Wage Statistics, May 2021.

Employer costs per hour worked for wages and selected employee benefits by geographic division

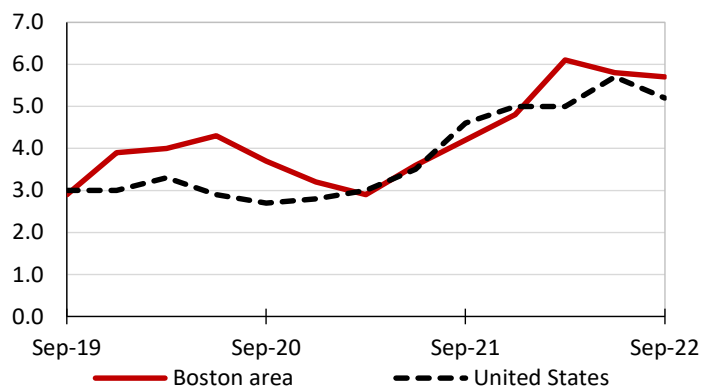
Private industry, September 2022	New England (1)	United States
Total compensation	\$44.18	\$39.61
Wages and salaries	30.60	27.93
Total benefits	13.57	11.68
Paid leave	3.46	2.94
Vacation	1.75	1.51
Supplemental pay	1.89	1.41
Insurance	3.40	3.00
Retirement and savings	1.55	1.35
Legally required benefits	3.28	2.98

(1) The states that compose the New England census division are: CT, ME, MA, NH, RI, and VT.

Source: U.S. BLS, Employer Costs for Employee Compensation.

Over-the-year changes in wages and salaries

12-month percent changes in ECI



Source: U.S. BLS, Employment Cost Index.

