

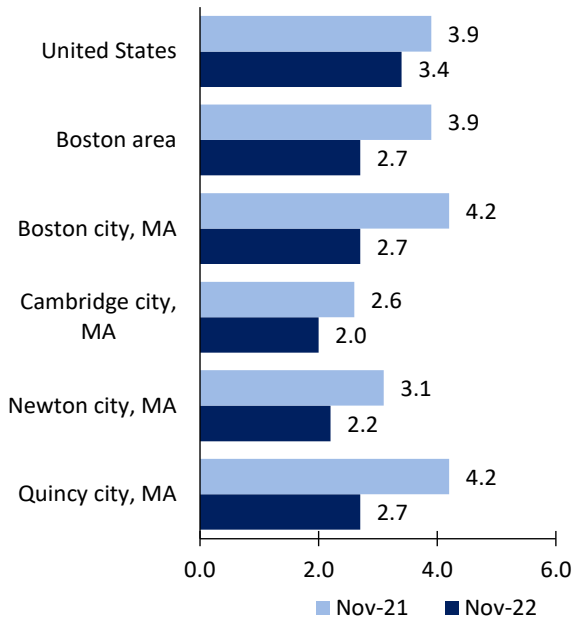
Boston, MA-NH, Area Economic Summary

Updated January 17, 2023

This summary presents a sampling of economic information for the area; supplemental data are provided for regions and the nation. Subjects include **unemployment, employment, wages, prices, spending, and benefits**. All data are not seasonally adjusted and some may be subject to revision. Area definitions may differ by subject. For more area summaries and geographic definitions, see www.bls.gov/regions/economic-summaries.htm.

Unemployment rates for the nation and selected areas

Unemployment rates

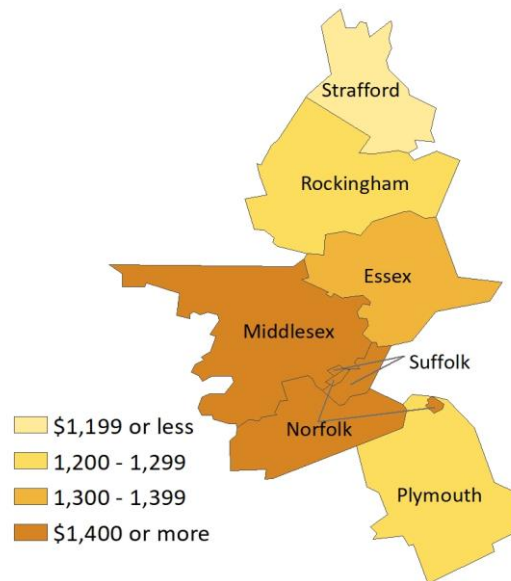


Source: U.S. BLS, Local Area Unemployment Statistics.

Average weekly wages for all industries by county

Boston area, second quarter 2022

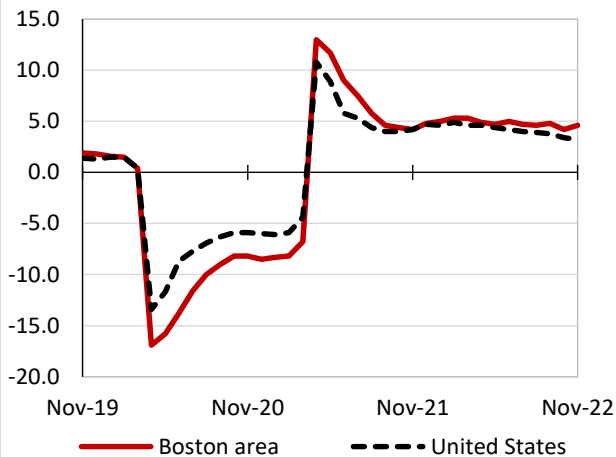
(U.S. = \$1,294; Area = \$1,770)



Source: U.S. BLS, Quarterly Census of Employment and Wages.

Over-the-year changes in employment on nonfarm payrolls and employment by major industry sector

12-month percent changes in employment



Source: U.S. BLS, Current Employment Statistics.

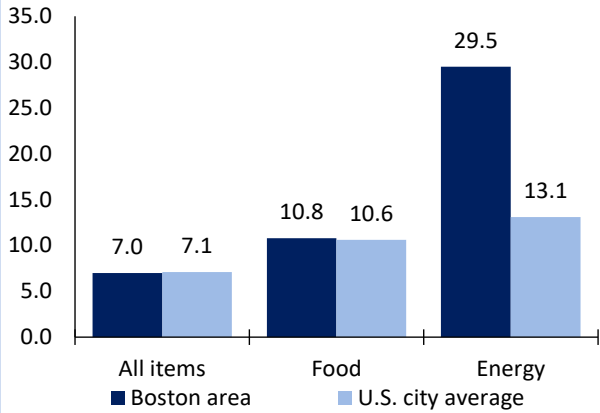
| Boston area employment (number in thousands) | Nov. 2022 | Change from Nov. 2021 to Nov. 2022 | |
|---|-----------|------------------------------------|---------|
| | | Number | Percent |
| Total nonfarm | 2,859.8 | 124.9 | 4.6 |
| Mining, logging, and construction | 135.1 | 6.6 | 5.1 |
| Manufacturing | 185.3 | 4.2 | 2.3 |
| Trade, transportation, and utilities | 421.7 | 15.5 | 3.8 |
| Information | 89.6 | 7.3 | 8.9 |
| Financial activities | 183.4 | 3.6 | 2.0 |
| Professional and business services | 559.1 | 29.7 | 5.6 |
| Education and health services | 623.7 | 27.8 | 4.7 |
| Leisure and hospitality | 256.1 | 28.2 | 12.4 |
| Other services | 94.9 | 0.6 | 0.6 |
| Government | 310.9 | 1.4 | 0.5 |

Source: U.S. BLS, Current Employment Statistics.



Over-the-year change in the prices paid by urban consumers for selected categories

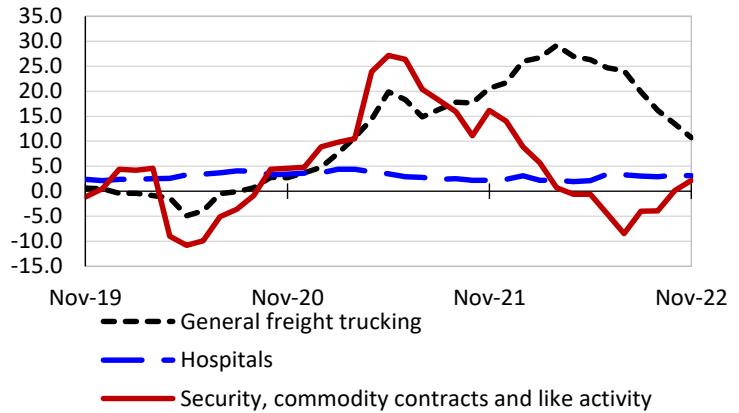
12-month percent change in CPI-U, November 2022



Source: U.S. BLS, Consumer Price Index.

Over-the-year changes in the selling prices received by producers for selected industries nationwide

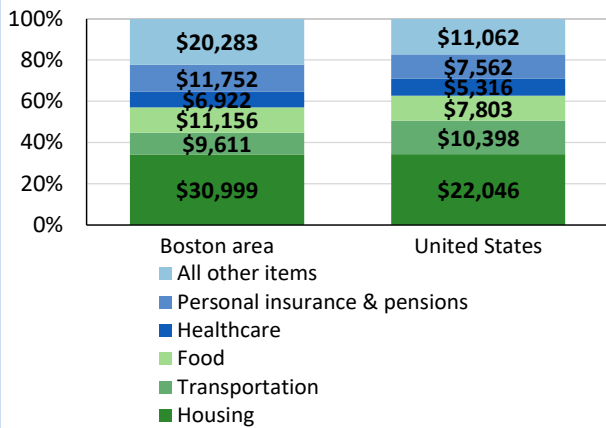
12-month percent changes in PPI



Source: U.S. BLS, Producer Price Index.

Average annual spending and percent distribution for selected categories

Average annual expenditures, United States and Boston area, 2020-21



Source: U.S. BLS, Consumer Expenditure Survey.

Average hourly wages for selected occupations

| Occupation | Boston area | United States |
|---------------------------------|-------------|---------------|
| All occupations | \$36.95 | \$28.01 |
| Lawyers | 82.53 | 71.17 |
| General and operations managers | 71.94 | 55.41 |
| Biochemists and biophysicists | 64.94 | 54.55 |
| Management analysts | 56.91 | 48.33 |
| Registered nurses | 48.05 | 39.78 |
| Accountants and auditors | 45.15 | 40.37 |

Source: U.S. BLS, Occupational Employment and Wage Statistics, May 2021.

Employer costs per hour worked for wages and selected employee benefits by geographic division

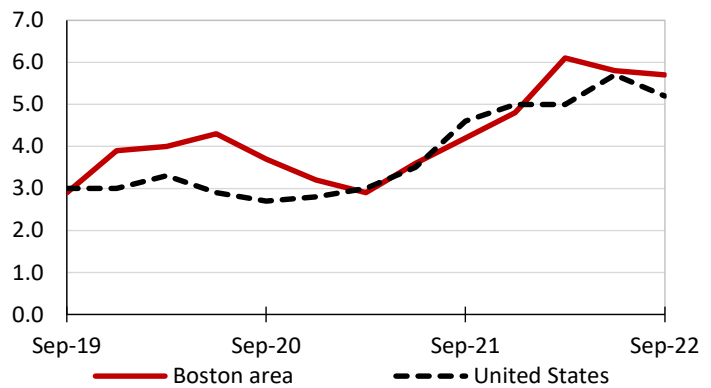
| Private industry, September 2022 | New England (1) | United States |
|----------------------------------|-----------------|---------------|
| Total compensation | \$44.18 | \$39.61 |
| Wages and salaries | 30.60 | 27.93 |
| Total benefits | 13.57 | 11.68 |
| Paid leave | 3.46 | 2.94 |
| Vacation | 1.75 | 1.51 |
| Supplemental pay | 1.89 | 1.41 |
| Insurance | 3.40 | 3.00 |
| Retirement and savings | 1.55 | 1.35 |
| Legally required benefits | 3.28 | 2.98 |

(1) The states that compose the New England census division are: CT, ME, MA, NH, RI, and VT.

Source: U.S. BLS, Employer Costs for Employee Compensation.

Over-the-year changes in wages and salaries

12-month percent changes in ECI



Source: U.S. BLS, Employment Cost Index.

