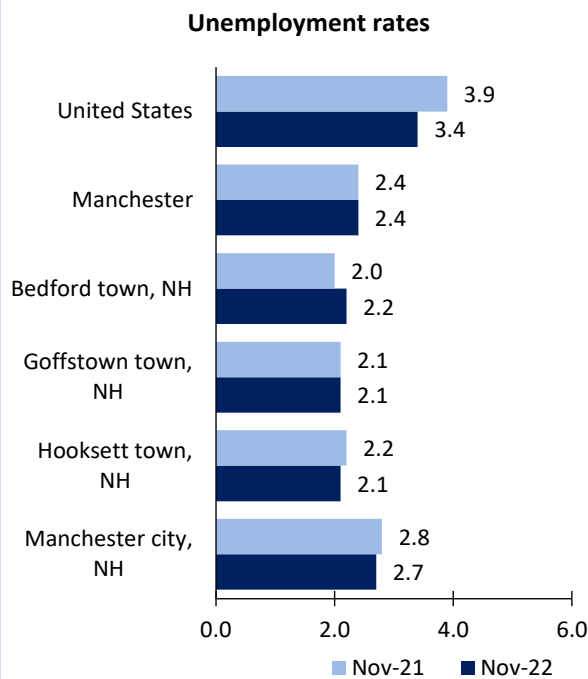


Manchester, NH, Area Economic Summary

Updated January 17, 2023

This summary presents a sampling of economic information for the area; supplemental data are provided for regions and the nation. Subjects include **unemployment, employment, wages, prices, spending, and benefits**. All data are not seasonally adjusted and some may be subject to revision. Area definitions may differ by subject. For more area summaries and geographic definitions, see www.bls.gov/regions/economic-summaries.htm.

Unemployment rates for the nation and selected areas



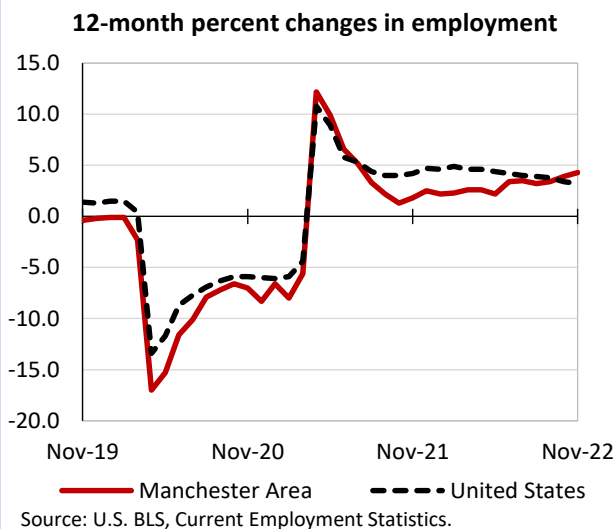
Average weekly wages for all industries by county

Manchester Area, second quarter 2022

(U.S. = \$1,294; Area = \$1,439)



Over-the-year changes in employment on nonfarm payrolls and employment by major industry sector



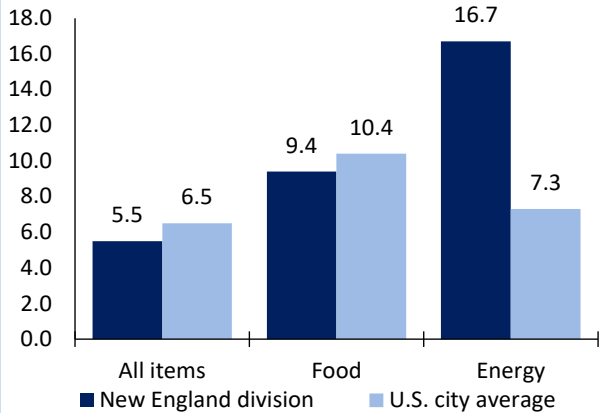
Manchester Area employment (number in thousands)	Nov. 2022	Change from Nov. 2021 to Nov. 2022	
		Number	Percent
Total nonfarm	116.8	4.8	4.3
Mining, logging, and construction	5.9	0.4	7.3
Manufacturing	7.8	0.0	0.0
Trade, transportation, and utilities	20.5	0.6	3.0
Information	2.8	0.0	0.0
Financial activities	7.3	-0.2	-2.7
Professional and business services	18.4	1.6	9.5
Education and health services	26.9	0.8	3.1
Leisure and hospitality	10.9	1.5	16.0
Other services	4.7	0.2	4.4
Government	11.6	-0.1	-0.9

Source: U.S. BLS, Current Employment Statistics.



Over-the-year change in the prices paid by urban consumers for selected categories

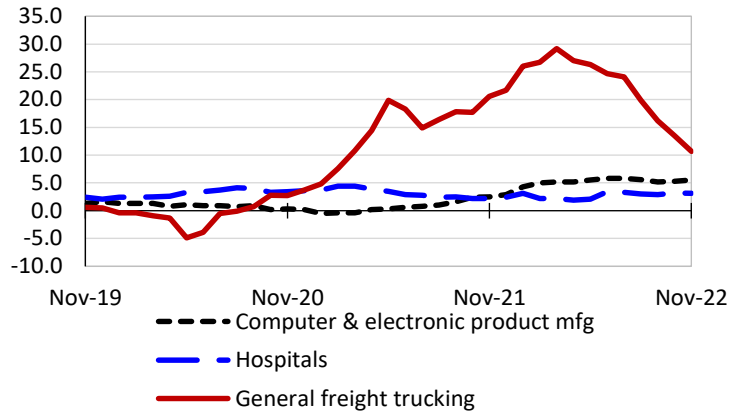
12-month percent change in CPI-U, December 2022



Source: U.S. BLS, Consumer Price Index.

Over-the-year changes in the selling prices received by producers for selected industries nationwide

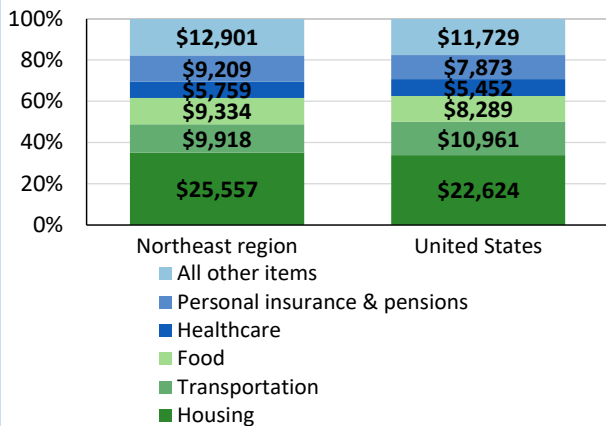
12-month percent changes in PPI



Source: U.S. BLS, Producer Price Index.

Average annual spending and percent distribution for selected categories

Average annual expenditures, United States and Northeast region, 2021



Source: U.S. BLS, Consumer Expenditure Survey.

Average hourly wages for selected occupations

Occupation	Manchester area	United States
All occupations	\$28.81	\$28.01
Financial managers	68.11	73.78
Computer user support specialists	28.48	27.72
Industrial machinery mechanics	24.79	28.26
Social and human service assistants	18.34	19.45
Receptionists and information clerks	15.78	15.82
Stockers and order fillers	15.52	15.87

Source: U.S. BLS, Occupational Employment and Wage Statistics, May 2021.

Employer costs per hour worked for wages and selected employee benefits by geographic division

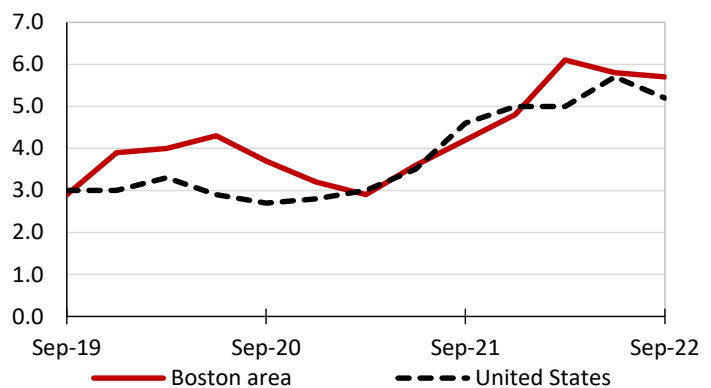
Private industry, September 2022	New England (1)	United States
Total compensation	\$44.18	\$39.61
Wages and salaries	30.60	27.93
Total benefits	13.57	11.68
Paid leave	3.46	2.94
Vacation	1.75	1.51
Supplemental pay	1.89	1.41
Insurance	3.40	3.00
Retirement and savings	1.55	1.35
Legally required benefits	3.28	2.98

(1) The states that compose the New England census division are: CT, ME, MA, NH, RI, and VT.

Source: U.S. BLS, Employer Costs for Employee Compensation.

Over-the-year changes in wages and salaries

12-month percent changes in ECI



Source: U.S. BLS, Employment Cost Index.