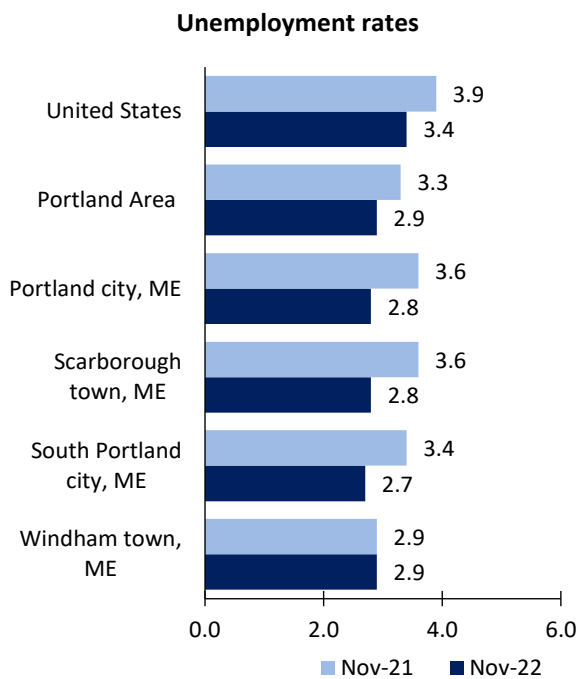


# Portland, ME, Area Economic Summary

Updated January 17, 2023

This summary presents a sampling of economic information for the area; supplemental data are provided for regions and the nation. Subjects include **unemployment, employment, wages, prices, spending, and benefits**. All data are not seasonally adjusted and some may be subject to revision. Area definitions may differ by subject. For more area summaries and geographic definitions, see [www.bls.gov/regions/economic-summaries.htm](http://www.bls.gov/regions/economic-summaries.htm).

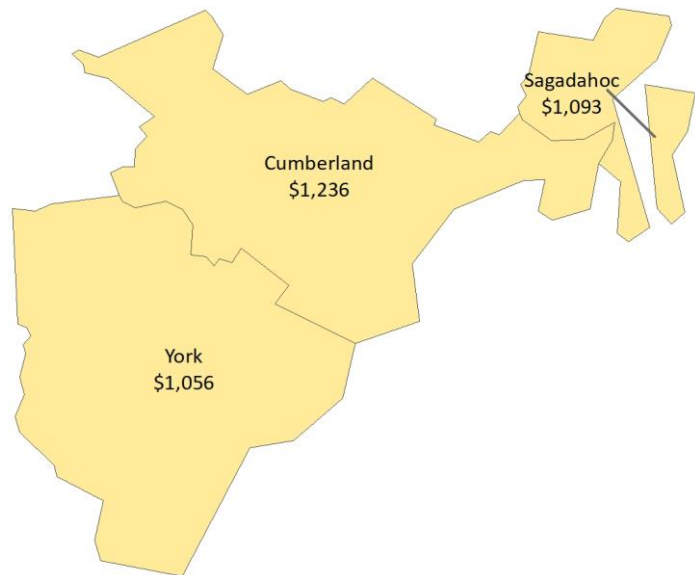
## Unemployment rates for the nation and selected areas



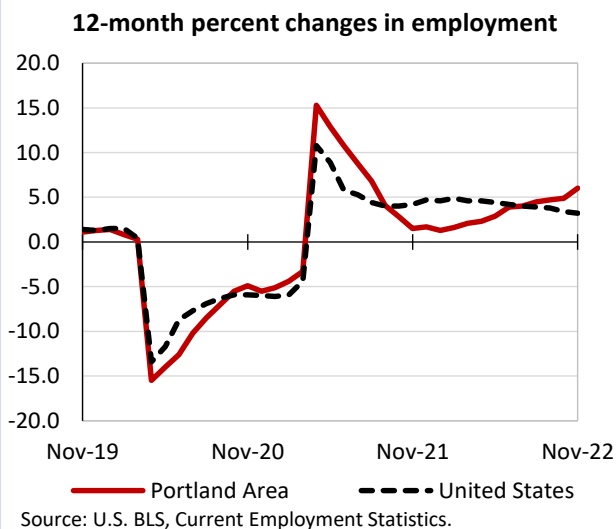
## Average weekly wages for all industries by county

### Portland Area, second quarter 2022

(U.S. = \$1,294; Area = \$1,178)



## Over-the-year changes in employment on nonfarm payrolls and employment by major industry sector



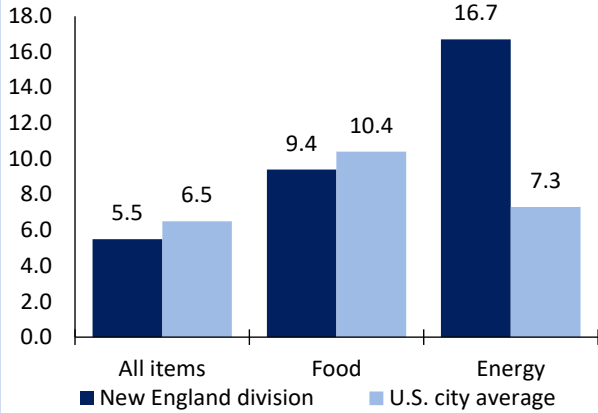
Portland Area employment (number in thousands)	Nov. 2022	Change from Nov. 2021 to Nov. 2022	
		Number	Percent
Total nonfarm	219.5	12.4	6.0
Mining, logging, and construction	11.0	0.3	2.8
Manufacturing	16.3	0.7	4.5
Trade, transportation, and utilities	39.0	1.0	2.6
Information	3.3	0.2	6.5
Financial activities	17.1	0.1	0.6
Professional and business services	35.5	4.9	16.0
Education and health services	43.6	0.8	1.9
Leisure and hospitality	22.1	3.9	21.4
Other services	7.8	0.3	4.0
Government	23.8	0.2	0.8

Source: U.S. BLS, Current Employment Statistics.



Over-the-year change in the prices paid by urban consumers for selected categories

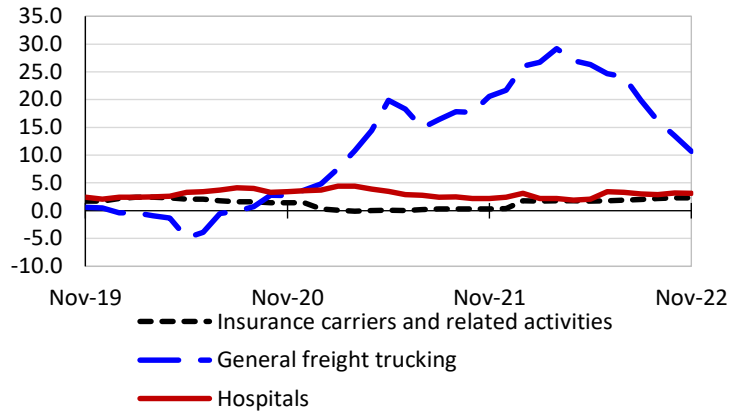
**12-month percent change in CPI-U, December 2022**



Source: U.S. BLS, Consumer Price Index.

Over-the-year changes in the selling prices received by producers for selected industries nationwide

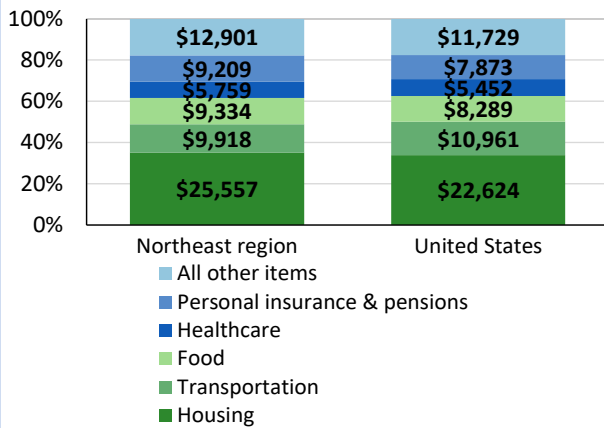
**12-month percent changes in PPI**



Source: U.S. BLS, Producer Price Index.

Average annual spending and percent distribution for selected categories

**Average annual expenditures, United States and Northeast region, 2021**



Source: U.S. BLS, Consumer Expenditure Survey.

Average hourly wages for selected occupations

Occupation	Portland area	United States
All occupations	\$27.43	\$28.01
General and operations managers	52.91	55.41
Waiters and waitresses	20.35	13.95
Office clerks, general	19.70	18.75
Nursing assistants	17.15	15.99
Maids and housekeeping cleaners	14.95	14.22
Cashiers	14.81	12.87

Source: U.S. BLS, Occupational Employment and Wage Statistics, May 2021.

Employer costs per hour worked for wages and selected employee benefits by geographic division

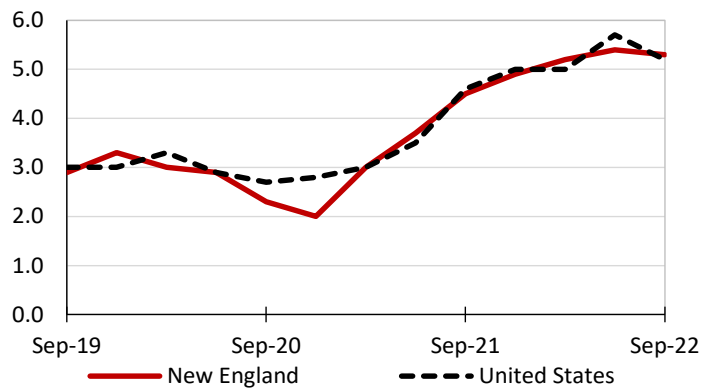
Private industry, September 2022	New England (1)	United States
Total compensation	\$44.18	\$39.61
Wages and salaries	30.60	27.93
Total benefits	13.57	11.68
Paid leave	3.46	2.94
Vacation	1.75	1.51
Supplemental pay	1.89	1.41
Insurance	3.40	3.00
Retirement and savings	1.55	1.35
Legally required benefits	3.28	2.98

(1) The states that compose the New England census division are: CT, ME, MA, NH, RI, and VT.

Source: U.S. BLS, Employer Costs for Employee Compensation.

Over-the-year changes in wages and salaries

**12-month percent changes in ECI**



Source: U.S. BLS, Employment Cost Index.

