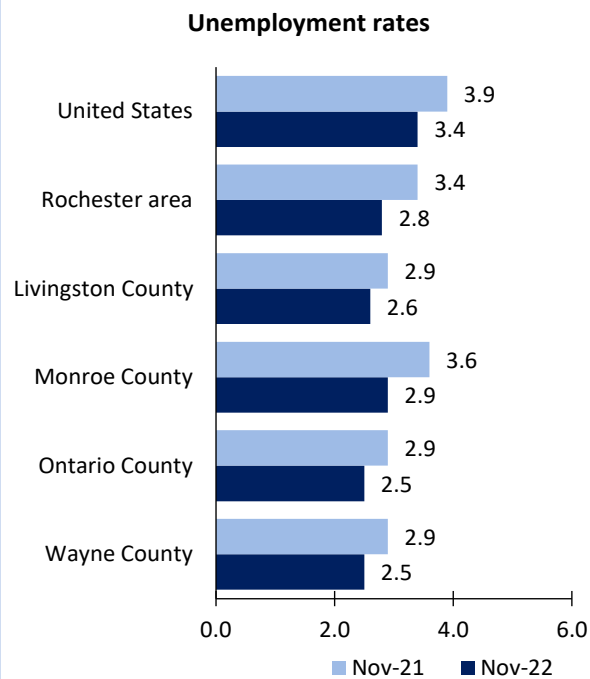


Rochester, NY, Area Economic Summary

Updated January 06, 2023

This summary presents a sampling of economic information for the area; supplemental data are provided for regions and the nation. Subjects include **unemployment, employment, wages, prices, spending, and benefits**. All data are not seasonally adjusted and some may be subject to revision. Area definitions may differ by subject. For more area summaries and geographic definitions, see www.bls.gov/regions/economic-summaries.htm.

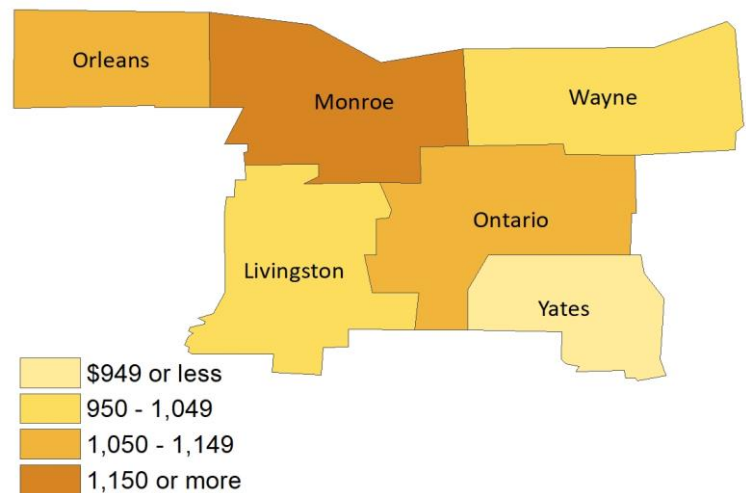
Unemployment rates for the nation and selected areas



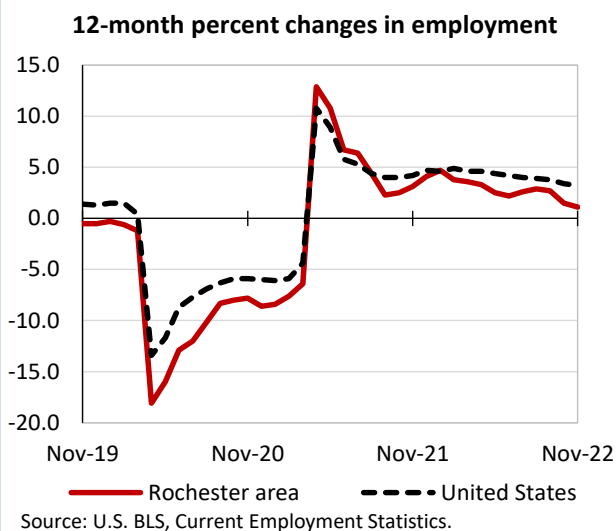
Average weekly wages for all industries by county

Rochester, NY area, second quarter 2022

(U.S. = \$1,294; Area = \$1,147)



Over-the-year changes in employment on nonfarm payrolls and employment by major industry sector



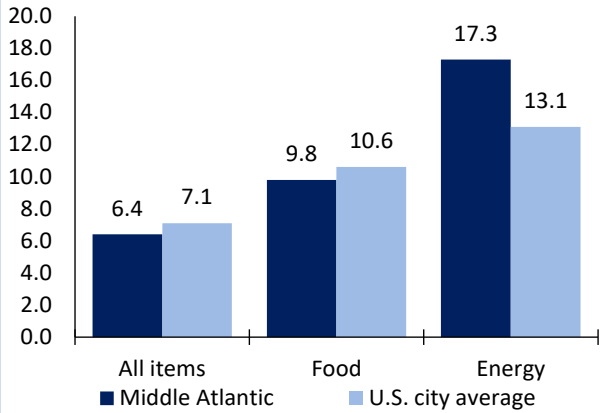
Rochester area employment (number in thousands)	Nov. 2022	Change from Nov. 2021 to Nov. 2022	
		Number	Percent
Total nonfarm	524.7	5.8	1.1
Mining and logging	0.7	0.0	0.0
Construction	23.2	0.8	3.6
Manufacturing	55.8	1.5	2.8
Trade, transportation, and utilities	82.0	-1.4	-1.7
Information	6.1	-0.1	-1.6
Financial activities	22.3	-0.2	-0.9
Professional and business services	64.7	1.4	2.2
Education and health services	131.1	1.7	1.3
Leisure and hospitality	43.0	0.3	0.7
Other services	18.2	0.9	5.2
Government	77.6	0.9	1.2

Source: U.S. BLS, Current Employment Statistics.



Over-the-year change in the prices paid by urban consumers for selected categories

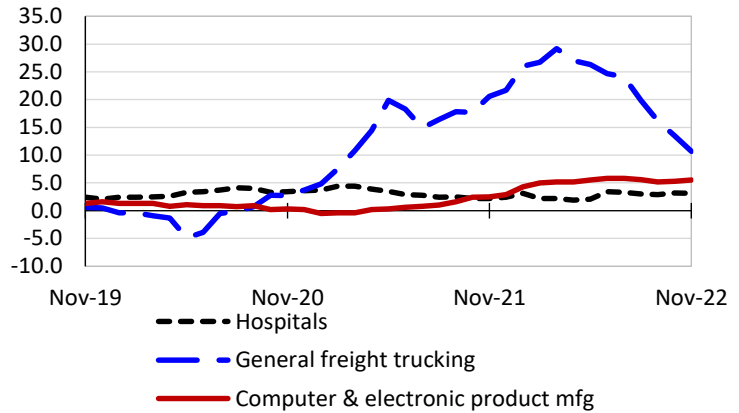
12-month percent change in CPI-U, November 2022



Source: U.S. BLS, Consumer Price Index.

Over-the-year changes in the selling prices received by producers for selected industries nationwide

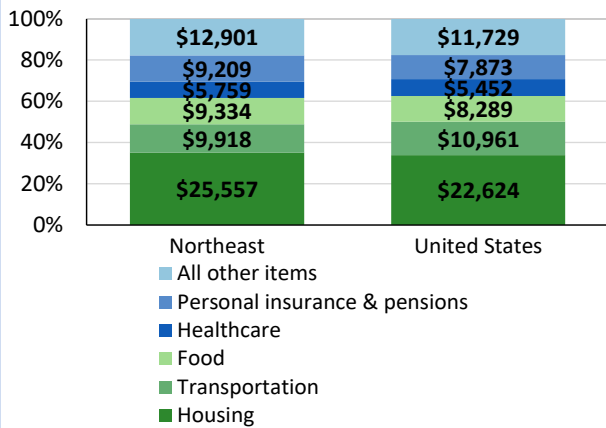
12-month percent changes in PPI



Source: U.S. BLS, Producer Price Index.

Average annual spending and percent distribution for selected categories

Average annual expenditures, United States and Northeast, 2021



Source: U.S. BLS, Consumer Expenditure Survey.

Average hourly wages for selected occupations

Occupation	Rochester area	United States
All occupations	\$27.32	\$28.01
Industrial engineers	43.57	45.77
Registered nurses	36.57	39.78
Production, planning, and expediting clerks	23.88	25.11
Ophthalmic laboratory technicians	19.44	18.71
Childcare workers	14.49	13.31
Fast food and counter workers	13.87	12.53

Source: U.S. BLS, Occupational Employment and Wage Statistics, May 2021.

Employer costs per hour worked for wages and selected employee benefits by geographic division

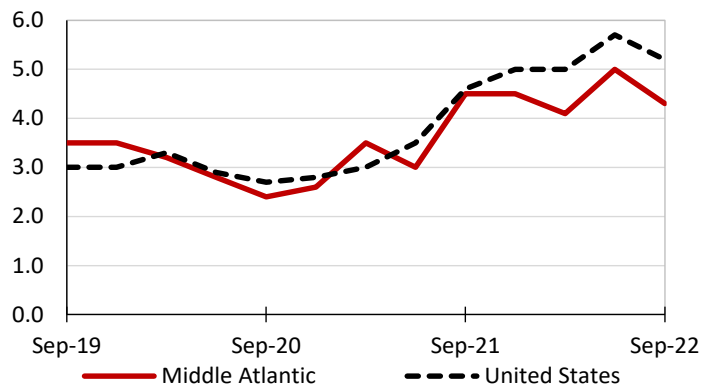
Private industry, September 2022	Middle Atlantic	United States
Total compensation	\$43.71	\$39.61
Wages and salaries	30.16	27.93
Total benefits	13.55	11.68
Paid leave	3.41	2.94
Vacation	1.71	1.51
Supplemental pay	1.55	1.41
Insurance	3.53	3.00
Retirement and savings	1.69	1.35
Legally required benefits	3.37	2.98

(1) The states that compose the Middle Atlantic census division are: NJ, NY, and PA.

Source: U.S. BLS, Employer Costs for Employee Compensation.

Over-the-year changes in wages and salaries

12-month percent changes in ECI



Source: U.S. BLS, Employment Cost Index.

