



For Release: Wednesday, January 27, 2016

16-76-SAN

WESTERN INFORMATION OFFICE: San Francisco, Calif.

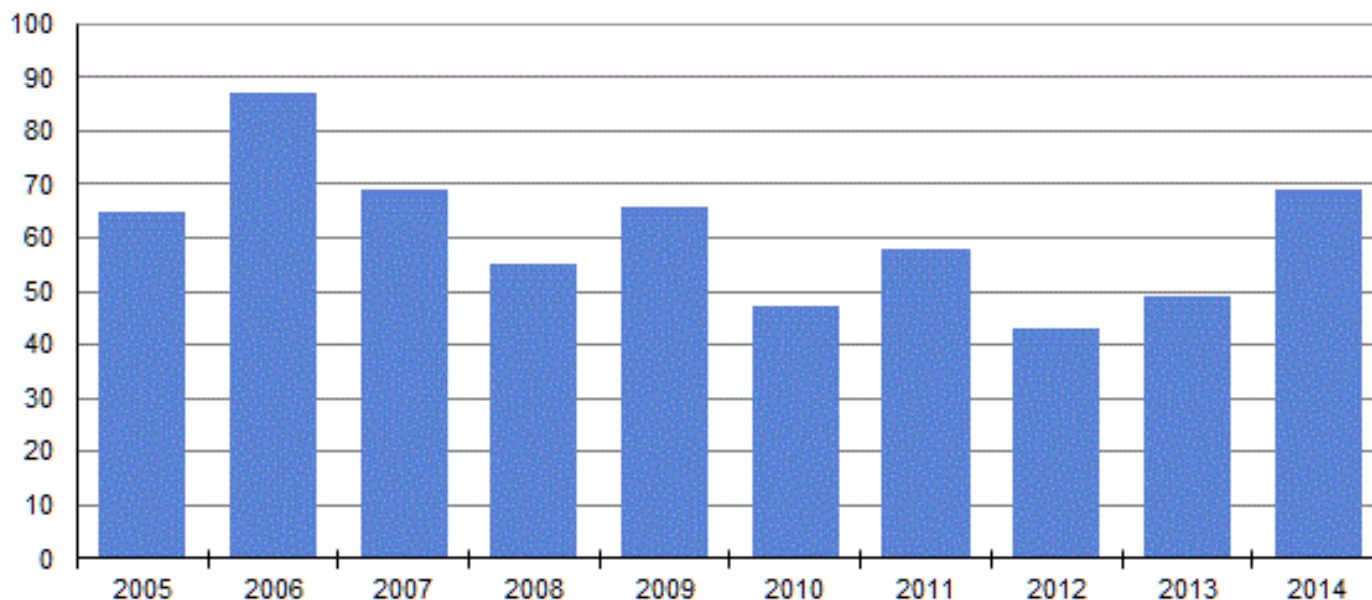
Technical information: (415) 625-2270 BLSinfoSF@bls.gov www.bls.gov/regions/west

Media contact: (415) 625-2270

Fatal Work Injuries in Oregon – 2014

Fatal work injuries totaled 69 in 2014 for Oregon, the U.S. Bureau of Labor Statistics reported today. Regional Commissioner Richard J. Holden noted that while the 2014 count was preliminary, the number of work-related fatalities in Oregon increased by 20 over the year. Fatal occupational injuries in the state have ranged from a high of 88 in 1992 to a low of 43 in 2012. (See [chart 1](#).) Nationwide, a preliminary total of 4,679 fatal work injuries were recorded in 2014, up from a revised count of 4,585 fatalities in 2013, according to results from the Census of Fatal Occupational Injuries (CFOI) program. Final 2014 CFOI data will be released in the late spring of 2016.

Chart 1. Total fatal occupational injuries, Oregon, 2005–14



NOTE: Data for 2014 are preliminary.

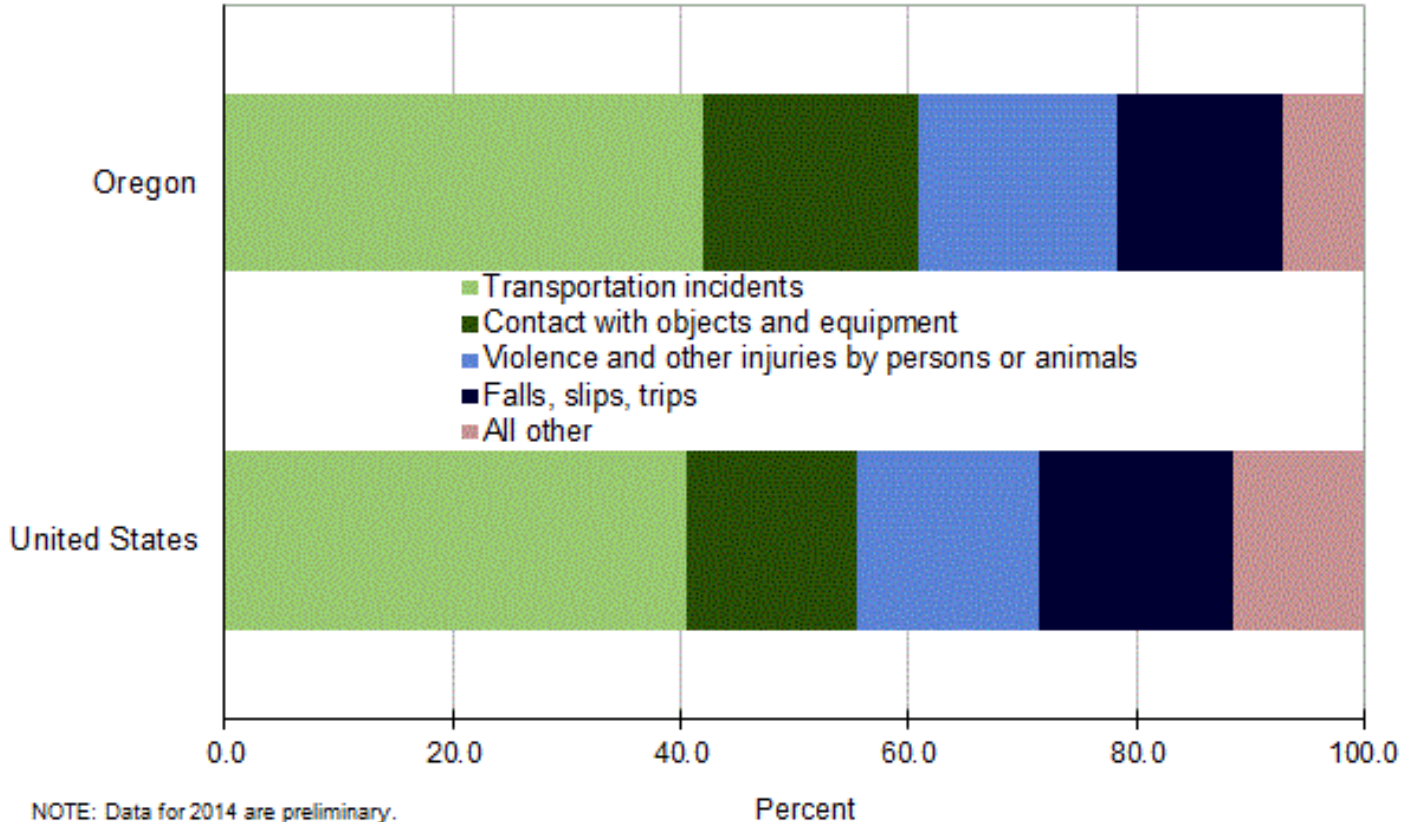
SOURCE: U.S. Bureau of Labor Statistics.

Of the 69 fatal work injuries reported in Oregon in 2014, 29 resulted from transportation incidents and 13 from contact with objects and equipment. Together these two major categories accounted for over half of all fatal work injuries reported in the state. Violence and other injuries by persons or animals had the third most fatalities with 12. (See [table 1](#).) Other major event categories each reported 10 or fewer deaths. Within transportation incidents, roadway incidents involving motorized land vehicles was the most frequent type of workplace fatality with 15 deaths. This category accounted for nearly one-quarter of all on-the-job fatalities in the state. In the contact with objects and equipment category, 9 of the 13 deaths occurred as a result of being

struck by an object or equipment. (Note that transportation counts presented in this release are expected to rise when updated 2014 data are released in the late spring of 2016 because key source documentation detailing specific transportation-related incidents has not yet been received.)

In the United States, transportation incidents were also the most frequent fatal workplace event in 2014, accounting for 40 percent of fatal work injuries. In Oregon, transportation incidents accounted for 42 percent of the state’s share of fatalities. (See [chart 2](#).) Falls, slips, or trips was the second most frequent type of event nationally, with 17 percent of work-related fatalities; the share in Oregon was 14 percent. Contact with objects or equipment and violence and other injuries by persons or animals each accounted for about 16 percent of the nation’s workplace fatalities, while in the state, these events were responsible for 19 and 17 percent of workplace fatalities, respectively.

Chart 2. Fatal occupational injuries by selected event, Oregon and the United States, 2014



Additional highlights:

- The agriculture, forestry, fishing and hunting industry had the largest number of fatalities in the state with 19, compared to 10 the previous year. Transportation incidents accounted for eight fatal work injuries in this industry and contact with objects and equipment accounted for seven fatalities. (See [table 2](#).)
- Transportation and warehousing had the second highest fatality count with 13, followed by construction and government with 6 worker deaths each. Transportation incidents accounted for the largest number deaths in each of these industries.
- Transportation and material moving occupations had the highest number of fatal work injuries with 16. Extraction workers suffered 14 fatalities followed by heavy tractor trailer and truck drivers with 7 fatalities. (See [table 3](#).)
- Men accounted for 60, or 87 percent, of the work-related fatalities in the state. (See [table 4](#).) Transportation incidents made up 43 percent of these fatalities.

- In Oregon, 84 percent of those who died from a workplace injury were white non-Hispanics. Nationwide, this group accounted for 68 percent of work-related deaths.
- Workers 25-54 years old—the prime working age group—accounted for 38, or 55 percent of the state’s work-related fatalities in 2014. Nationally, workers in this group accounted for 58 percent of on-the-job fatalities.
- Of the 69 fatal work injuries in Oregon, 75 percent worked for wages and salaries; the remainder were self-employed. The most frequent fatal event for wage and salary workers was transportation incidents. For the self-employed, falls, slips, or trips was the most frequent fatal event.

Technical Note

Background of the program. The Census of Fatal Occupational Injuries, part of the BLS occupational safety and health statistics program, compiles a count of all fatal work injuries occurring in the United States during the calendar year. The program uses diverse state, federal, and independent data sources to identify, verify, and describe fatal work injuries. This assures counts are as complete and accurate as possible.

For technical information about the CFOI program, please go to the BLS Handbook of Methods on the BLS web site at www.bls.gov/opub/hom/pdf/homch9.pdf.

Federal/State agency coverage. The Census of Fatal Occupational Injuries includes data for all fatal work injuries, whether the decedent was working in a job covered by the Occupational Safety and Health Administration (OSHA) or other federal or state agencies or was outside the scope of regulatory coverage. Thus, any comparison between the BLS fatality census counts and those released by other agencies should take into account the different coverage requirements and definitions being used by each agency.

Acknowledgments. The Bureau of Labor Statistics appreciates the efforts of all federal, state, local, and private sector entities that submitted source documents used to identify fatal work injuries.

Information in this release will be made available to sensory impaired individuals upon request. Voice phone: (202) 691-5200; Federal Relay Service: (800) 877-8339.

Table 1. Fatal occupational injuries by event or exposure, Oregon, 2013–14

Event or exposure ⁽¹⁾	2013 ⁽²⁾	2014 ^(p)	
	Number	Number	Percent
Total.....	49	69	100
Violence and other injuries by persons or animals.....	4	12	17
Intentional injury by person.....	3	10	14
Homicides (Intentional injury by other person).....	--	4	6
Shooting by other person--intentional.....	--	2	3
Stabbing, cutting, slashing, piercing.....	--	1	1
Multiple violent acts by other person.....	--	1	1
Suicides (Self-inflicted injury--intentional).....	--	6	9
Hanging, strangulation, asphyxiation--intentional self-harm.....	--	3	4
Injury by person--unintentional or intent unknown.....	--	1	1
Injury by other person--unintentional or intent unknown.....	--	1	1
Injured by physical contact with person while restraining, subduing--unintentional.....	--	1	1
Transportation incidents.....	19	29	42
Pedestrian vehicular incident.....	--	9	13
Pedestrian struck by vehicle in roadway.....	--	2	3
Pedestrian struck by forward-moving vehicle in roadway.....	--	2	3
Pedestrian struck by vehicle in nonroadway area.....	--	3	4
Roadway incidents involving motorized land vehicle.....	11	15	22
Roadway collision with other vehicle.....	--	6	9
Roadway collision--moving in same direction.....	--	1	1
Roadway collision with object other than vehicle.....	6	3	4
Vehicle struck by falling or flying object--roadway.....	--	1	1
Roadway noncollision incident.....	3	6	9
Jack-knifed or overturned, roadway.....	3	6	9
Nonroadway incident involving motorized land vehicles.....	4	3	4
Nonroadway collision with object other than vehicle.....	--	2	3
Nonroadway noncollision incident.....	3	1	1
Ran off driving surface, nonroadway.....	--	1	1
Fires and explosions.....	1	1	1
Explosions.....	--	1	1
Explosion of pressure vessel, piping, or tire.....	--	1	1
Falls, slips, trips.....	8	10	14
Falls to lower level.....	6	8	12
Other fall to lower level.....	5	6	9
Exposure to harmful substances or environments.....	5	4	6
Contact with objects and equipment.....	12	13	19
Struck by object or equipment.....	10	9	13
Struck by falling object or equipment--other than powered vehicle.....	4	7	10
Struck by object falling from vehicle or machinery--other than vehicle part.....	--	1	1

Footnotes:

(1) Based on the BLS Occupational Injury and Illness Classification System (OIICS) 2.01 implemented for 2011 data forward.

(2) Totals for 2013 are revised and final.

(p) Data for 2014 are preliminary. Revised and final 2014 data are scheduled to be released in spring 2016.

NOTE: Totals for major categories may include subcategories not shown separately. Percentages may not add to totals because of rounding. CFOI fatality counts exclude illness-related deaths unless precipitated by an injury event. Dashes indicate no data reported or data that do not meet publication guidelines.

Table 2. Fatal occupational injuries by industry, Oregon, 2013–14

Industry ⁽¹⁾	2013 ⁽²⁾	2014 ^(p)	
	Number	Number	Percent
Total.....	49	69	100
Private industry.....	46	63	91
Natural resources and mining.....	11	20	29
Agriculture, forestry, fishing and hunting.....	10	19	28
Crop production.....	--	2	3
Animal production and aquaculture.....	3	2	3
Forestry and logging.....	3	13	19
Construction.....	9	6	9
Construction.....	9	6	9
Heavy and civil engineering construction.....	4	1	1
Specialty trade contractors.....	4	3	4
Manufacturing.....	3	3	4
Manufacturing.....	3	3	4
Wood product manufacturing.....	--	2	3
Fabricated metal product manufacturing.....	--	1	1
Trade, transportation, and utilities.....	11	18	26
Retail trade.....	--	4	6
Furniture and home furnishings stores.....	--	1	1
Food and beverage stores.....	--	1	1
Health and personal care stores.....	--	1	1
Sporting goods, hobby, book, and music stores.....	--	1	1
Transportation and warehousing.....	7	13	19
Truck transportation.....	4	12	17
Support activities for transportation.....	--	1	1
Financial activities.....	--	3	4
Real estate and rental and leasing.....	--	3	4
Professional and business services.....	8	5	7
Professional and technical services.....	--	1	1
Professional, scientific, and technical services.....	--	1	1
Administrative and waste services.....	7	4	6
Administrative and support services.....	7	3	4
Waste management and remediation services.....	--	1	1
Educational and health services.....	--	1	1
Educational services.....	--	1	1
Educational services.....	--	1	1
Leisure and hospitality.....	--	2	3
Accommodation and food services.....	1	2	3
Accommodation.....	1	1	1
Food services and drinking places.....	--	1	1
Other services, except public administration.....	--	4	6
Other services, except public administration.....	--	4	6
Repair and maintenance.....	--	3	4
Personal and laundry services.....	--	1	1
Government ⁽³⁾	3	6	9
Federal government.....	--	1	1
Local government.....	1	3	4

Footnotes:

(1) Industry data for 2013 are based on the North American Industry Classification System, 2007. Industry data for 2014 are based on the North American Industry Classification System, 2012.

(2) Totals for 2013 are revised and final.

(p) Data for 2014 are preliminary. Revised and final 2014 data are scheduled to be released in spring 2016.

(3) Includes fatal injuries to workers employed by governmental organizations regardless of industry.

NOTE: Totals for major categories may include subcategories not shown separately. Percentages may not add to totals because of rounding. CFOI fatality counts exclude illness-related deaths unless precipitated by an injury event. Dashes indicate no data reported or data that do not meet publication criteria.

Table 3. Fatal occupational injuries by occupation, Oregon, 2013–14

Occupation (1)	2013 (2)	2014 (P)	
	Number	Number	Percent
Total.....	49	69	100
Management occupations.....	1	5	7
Advertising, marketing, promotions, public relations, and sales managers.....	--	1	1
Marketing and sales managers.....	--	1	1
Sales managers.....	--	1	1
Other management occupations.....	1	3	4
Food service managers.....	--	1	1
Food service managers.....	--	1	1
Life, physical, and social science occupations.....	--	1	1
Life, physical, and social science technicians.....	--	1	1
Miscellaneous life, physical, and social science technicians.....	--	1	1
Forest and conservation technicians.....	--	1	1
Other protective service workers.....	--	1	1
Security guards and gaming surveillance officers.....	--	1	1
Security guards.....	--	1	1
Building and grounds cleaning and maintenance occupations.....	5	3	4
Grounds maintenance workers.....	--	1	1
Grounds maintenance workers.....	--	1	1
Landscaping and groundskeeping workers.....	--	1	1
Personal care and service occupations.....	1	3	4
Tour and travel guides.....	--	1	1
Tour and travel guides.....	--	1	1
Travel guides.....	--	1	1
Sales and related occupations.....	--	4	6
Supervisors of sales workers.....	--	1	1
First-line supervisors of sales workers.....	--	1	1
First-line supervisors of retail sales workers.....	--	1	1
Office and administrative support occupations.....	2	2	3
Material recording, scheduling, dispatching, and distributing workers.....	2	1	1
Weighers, measurers, checkers, and samplers, recordkeeping.....	--	1	1
Weighers, measurers, checkers, and samplers, recordkeeping.....	--	1	1
Other office and administrative support workers.....	--	1	1
Office clerks, general.....	--	1	1
Office clerks, general.....	--	1	1
Farming, fishing, and forestry occupations.....	9	13	19
Agricultural workers.....	4	1	1
Miscellaneous agricultural workers.....	4	1	1
Farmworkers, farm, ranch, and aquacultural animals.....	--	1	1
Forest, conservation, and logging workers.....	4	12	17
Logging workers.....	3	12	17
Fallers.....	2	6	9
Construction and extraction occupations.....	8	9	13
Supervisors of construction and extraction workers.....	4	1	1
First-line supervisors of construction trades and extraction workers.....	4	1	1
First-line supervisors of construction trades and extraction workers.....	4	1	1
Construction trades workers.....	4	4	6
Electricians.....	1	1	1
Electricians.....	1	1	1
Other construction and related workers.....	--	3	4
Highway maintenance workers.....	--	3	4
Highway maintenance workers.....	--	3	4
Installation, maintenance, and repair occupations.....	5	8	12
Supervisors of installation, maintenance, and repair workers.....	--	1	1
First-line supervisors of mechanics, installers, and repairers.....	--	1	1
First-line supervisors of mechanics, installers, and repairers.....	--	1	1
Vehicle and mobile equipment mechanics, installers, and repairers.....	--	4	6

Note: See footnotes at end of table.

Table 3. Fatal occupational injuries by occupation, Oregon, 2013–14 - Continued

Occupation ⁽¹⁾	2013 ⁽²⁾	2014 ^(p)	
	Number	Number	Percent
Bus and truck mechanics and diesel engine specialists	--	2	3
Bus and truck mechanics and diesel engine specialists	--	2	3
Heavy vehicle and mobile equipment service technicians and mechanics	--	1	1
Mobile heavy equipment mechanics, except engines	--	1	1
Other installation, maintenance, and repair occupations	5	3	4
Industrial machinery installation, repair, and maintenance workers	--	3	4
Millwrights.....	--	3	4
Transportation and material moving occupations.....	10	16	23
Motor vehicle operators.....	8	15	22
Driver/sales workers and truck drivers	6	14	20
Heavy and tractor-trailer truck drivers	6	14	20

Footnotes:

(1) Occupation data are based on the Standard Occupational Classification system, 2010.

(2) Totals for 2013 are revised and final.

(p) Data for 2014 are preliminary. Revised and final 2014 data are scheduled to be released in spring 2016.

NOTE: Totals for major categories may include subcategories not shown separately. Percentages may not add to totals because of rounding. CFI fatality counts exclude illness-related deaths unless precipitated by an injury event. Dashes indicate no data reported or data that do not meet publication criteria.

Table 4. Fatal occupational injuries by worker characteristics, Oregon, 2013–14

Worker characteristics	2013 ⁽¹⁾	2014 ^(p)	
	Number	Number	Percent
Total	49	69	100
Employee status			
Wage and salary ⁽²⁾	41	52	75
Self-employed ⁽³⁾	8	17	25
Gender			
Men	41	60	87
Women	8	9	13
Age ⁽⁴⁾			
20 to 24 years	--	3	4
25 to 34 years	9	10	14
35 to 44 years	10	15	22
45 to 54 years	11	13	19
55 to 64 years	7	18	26
65 years and over	9	10	14
Race or ethnic origin ⁽⁵⁾			
White, non-Hispanic	39	58	84
Hispanic or Latino	9	8	12

Footnotes:

(1) Totals for 2013 are revised and final.

(p) Data for 2014 are preliminary. Revised and final 2014 data are scheduled to be released in spring 2016.

(2) May include volunteers and workers receiving other types of compensation.

(3) Includes self-employed workers, owners of unincorporated businesses and farms, paid and unpaid family workers, and may include some owners of incorporated businesses or members of partnerships.

(4) Information may not be available for all age groups.

(5) Persons identified as Hispanic or Latino may be of any race. The race categories shown exclude Hispanic and Latino workers.

NOTE: Totals for major categories may include subcategories not shown separately. Percentages may not add to totals because of rounding. CFOI fatality counts exclude illness-related deaths unless precipitated by an injury event. Dashes indicate no data reported or data that do not meet publication criteria.