



**For Release: Tuesday, March 13, 2018**

**18-391-SAN**

WESTERN INFORMATION OFFICE: San Francisco, Calif.

Technical information: (415) 625-2270 BLSinfoSF@bls.gov www.bls.gov/regions/west

Media contact: (415) 625-2270

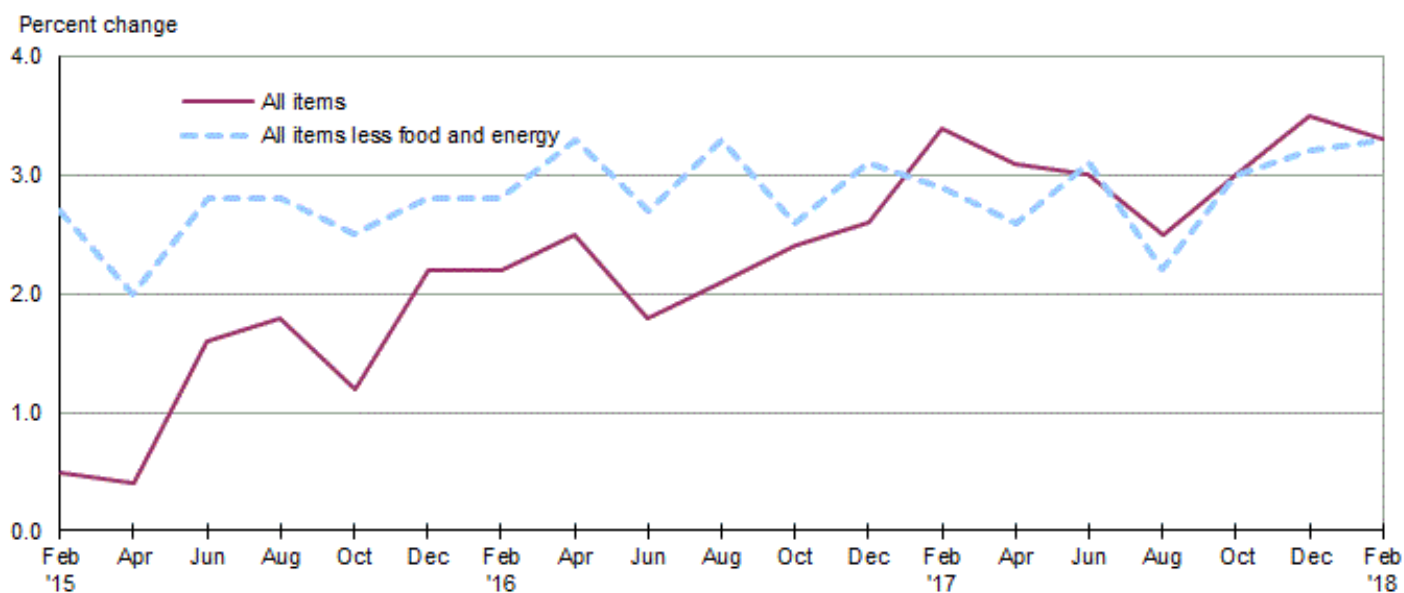
## **Consumer Price Index, Seattle area — February 2018**

**Area prices were up 0.8 percent over the past two months, up 3.3 percent from a year ago**

Prices in the Seattle Area, as measured by the Consumer Price Index for All Urban Consumers (CPI-U), rose 0.8 percent for the two months ending in February 2018, the U.S. Bureau of Labor Statistics reported today. (See [table A.](#)) Assistant Commissioner for Regional Operations Richard Holden noted that the December increase was influenced by higher prices for shelter and apparel. (Data in this report are not seasonally adjusted. Accordingly, month-to-month changes may reflect seasonal influences.)

Over the last 12 months, the CPI-U rose 3.3 percent. (See [chart 1](#) and [table A.](#)) Energy prices advanced 7.9 percent, largely the result of an increase in the price of gasoline. The index for all items less food and energy rose 3.3 percent over the year. (See [table 1.](#))

**Chart 1. Over-the-year percent change in CPI-U, Seattle, February 2015–February 2018**



Source: U.S. Bureau of Labor Statistics.

### **Food**

Food prices increased 0.2 percent for the two months ending in February. (See [table 1.](#)) Prices for food away from home rose 0.3 percent, and prices for food at home advanced 0.2 percent for the same period.

Over the year, food prices increased 1.3 percent. Prices for food away from home moved up 2.1 percent since a year ago, and prices for food at home rose 0.6 percent.

## Energy

The energy index advanced 3.5 percent for the two months ending in February. The increase was mainly due to higher prices for gasoline (4.8 percent). Prices for electricity increased 1.6 percent, while prices for natural gas service were unchanged for the same period.

Energy prices advanced 7.9 percent over the year, largely due to higher prices for gasoline (11.8 percent). Prices paid for electricity advanced 4.0 percent, but prices for natural gas service declined 3.9 percent during the past year.

## All items less food and energy

The index for all items less food and energy increased 0.7 percent in the latest two-month period. Higher prices for apparel (9.4 percent) and shelter (1.1 percent) were partially offset by lower prices for household furnishings and operations (-3.8 percent), other goods and services (-1.8 percent), and recreation (-1.4 percent).

Over the year, the index for all items less food and energy rose 3.3 percent. Components contributing to the increase included shelter (6.1 percent) and recreation (2.8 percent). Partly offsetting the increases were price declines in household furnishings and operations (-2.6 percent) and education and communication (-0.9 percent).

**Table A. Seattle-Tacoma-Bremerton CPI-U bi-monthly and annual percent changes (not seasonally adjusted)**

Month	2013		2014		2015		2016		2017		2018	
	Bi-monthly	Annual	Bi-monthly	Annual	Bi-monthly	Annual	Bi-monthly	Annual	Bi-monthly	Annual	Bi-monthly	Annual
February .....	0.8	1.8	0.7	1.2	0.2	1.1	0.2	2.2	1.0	3.4	0.8	3.3
April .....	0.4	1.2	1.6	2.4	0.9	0.4	1.1	2.5	0.8	3.1		
June .....	0.8	1.4	0.4	2.0	1.6	1.6	0.9	1.8	0.8	3.0		
August .....	0.0	1.1	-0.2	1.8	0.0	1.8	0.3	2.1	-0.2	2.5		
October .....	0.0	0.6	0.3	2.1	-0.3	1.2	0.0	2.4	0.5	3.0		
December .....	-0.7	1.3	-1.1	1.7	-0.2	2.2	0.0	2.6	0.5	3.5		

**The April 2018 Consumer Price Index for the Seattle-Tacoma-Bellevue is scheduled to be released May 10, 2018.**

### Consumer Price Index Geographic Revision for 2018

In January 2018, BLS introduced a new geographic area sample for the Consumer Price Index (CPI). As part of the new sample, the index for this area was renamed. Additional information on the geographic revision is available at: [www.bls.gov/cpi/additional-resources/geographic-revision-2018.htm](http://www.bls.gov/cpi/additional-resources/geographic-revision-2018.htm).

### Technical Note

The Consumer Price Index (CPI) is a measure of the average change in prices over time in a fixed market basket of goods and services. The Bureau of Labor Statistics publishes CPIs for two population groups: (1) a CPI for All Urban Consumers (CPI-U) which covers approximately 94 percent of the total population and (2) a CPI for Urban Wage Earners and Clerical Workers (CPI-W) which covers 28 percent of the total population.

The CPI-U includes, in addition to wage earners and clerical workers, groups such as professional, managerial, and technical workers, the self-employed, short-term workers, the unemployed, and retirees and others not in the labor force.

The CPI is based on prices of food, clothing, shelter, and fuels, transportation fares, charges for doctors' and dentists' services, drugs, and the other goods and services that people buy for day-to-day living. Each month, prices are collected in 75 urban areas across the country from about 5,000 housing units and approximately 22,000 retail establishments--department stores, supermarkets, hospitals, filling stations, and other types of stores and service establishments. All taxes directly associated with the purchase and use of items are included in the index.

The index measures price changes from a designated reference date (1982-84) that equals 100.0. An increase of 16.5 percent, for example, is shown as 116.5. This change can also be expressed in dollars as follows: the price of a base period "market basket" of goods and services in the CPI has risen from \$10 in 1982-84 to \$11.65. For further details see the CPI home page on the Internet at [www.bls.gov/cpi](http://www.bls.gov/cpi) and the BLS Handbook of Methods, Chapter 17, The Consumer Price Index, available on the Internet at [www.bls.gov/opub/hom/homch17\\_a.htm](http://www.bls.gov/opub/hom/homch17_a.htm).

In calculating the index, price changes for the various items in each location are averaged together with weights that represent their importance in the spending of the appropriate population group. Local data are then combined to obtain a U.S. city average. Because the sample size of a local area is smaller, the local area index is subject to substantially more sampling and other measurement error than the national index. In addition, local indexes are not adjusted for seasonal influences. As a result, local area indexes show greater volatility than the national index, although their long-term trends are quite similar. **NOTE:Area indexes do not measure differences in the level of prices between cities; they only measure the average change in prices for each area since the base period.**

The Seattle-Tacoma-Bellevue, WA. metropolitan area covered in this release is comprised of King, Pierce, and Snohomish Counties in the State of Washington.

Information in this release will be made available to sensory impaired individuals upon request. Voice phone: (202) 691-5200; Federal Relay Service: (800) 877-8339.

**Table 1. Consumer Price Index for All Urban Consumers (CPI-U): Indexes and percent changes for selected periods Seattle-Tacoma-Bellevue, WA (1982-84=100 unless otherwise noted)**

Item and Group	Indexes			Percent change from-		
	Dec. 2017	Jan. 2018	Feb. 2018	Feb. 2017	Dec. 2017	Jan. 2018
<b>Expenditure category</b>						
All items .....	265.850	-	268.031	3.3	0.8	-
All items (1967=100) .....	810.414	-	817.064	-	-	-
Food and beverages .....	265.968	-	266.607	1.2	0.2	-
Food .....	268.565	-	269.192	1.3	0.2	-
Food at home .....	248.171	250.981	248.609	0.6	0.2	-0.9
Cereals and bakery products .....	282.709	-	280.169	-	-0.9	-
Meats, poultry, fish, and eggs .....	207.654	-	203.228	-	-2.1	-
Dairy and related products .....	217.024	-	219.327	-	1.1	-
Fruits and vegetables .....	402.989	-	400.625	-	-0.6	-
Nonalcoholic beverages and beverage materials(1) .....	279.254	-	298.941	-	7.0	-
Other food at home .....	212.135	-	212.430	-	0.1	-
Food away from home .....	299.880	-	300.794	2.1	0.3	-
Food away from home .....	299.880	-	300.794	2.1	0.3	-
Alcoholic beverages .....	234.617	-	235.389	0.4	0.3	-
Housing .....	309.479	-	311.869	5.0	0.8	-
Shelter .....	354.356	355.528	358.355	6.1	1.1	0.8
Rent of primary residence(2) .....	365.801	366.628	368.177	7.5	0.6	0.4
Owners' equiv. rent of residences(2)(3) .....	371.517	372.752	374.179	6.2	0.7	0.4
Owners' equiv. rent of primary residence(1)(2) .....	371.517	372.752	374.179	6.2	0.7	0.4
Fuels and utilities .....	263.693	-	270.199	3.5	2.5	-
Household energy .....	240.294	244.345	244.113	3.0	1.6	-0.1
Energy services(2) .....	284.332	288.002	288.002	2.5	1.3	0.0
Electricity(2) .....	310.565	315.522	315.522	4.0	1.6	0.0
Utility (piped) gas service(2) .....	160.710	160.746	160.746	-3.9	0.0	0.0
Household furnishings and operations .....	175.989	-	169.384	-2.6	-3.8	-
Apparel .....	121.011	-	132.404	6.2	9.4	-
Transportation .....	218.551	-	222.246	3.5	1.7	-
Private transportation .....	226.727	-	230.002	4.2	1.4	-
New and used motor vehicles(4) .....	98.683	-	99.223	-	0.5	-
New vehicles(1) .....	195.470	-	195.552	-	0.0	-
Used cars and trucks(1) .....	313.621	-	316.805	-	1.0	-
Motor fuel .....	321.066	321.287	336.359	11.9	4.8	4.7
Gasoline (all types) .....	327.465	327.707	343.182	11.8	4.8	4.7
Gasoline, unleaded regular(4) .....	354.992	355.290	372.742	12.0	5.0	4.9
Gasoline, unleaded midgrade(4)(5) .....	259.451	260.305	268.759	10.8	3.6	3.2
Gasoline, unleaded premium(4) .....	302.716	302.614	314.513	10.6	3.9	3.9
Motor vehicle insurance(1) .....	582.369	-	582.369	-	0.0	-
Medical care .....	396.570	-	399.070	0.1	0.6	-
Recreation(6) .....	98.759	-	97.377	2.8	-1.4	-
Education and communication(6) .....	134.848	-	133.431	-0.9	-1.1	-
Tuition, other school fees, and child care(1) ..	1,440.976	-	1,442.162	-	0.1	-
Other goods and services .....	411.167	-	403.732	-0.4	-1.8	-
<b>Commodity and service group</b>						
All items .....	265.850	-	268.031	3.3	0.8	-
Commodities .....	189.051	-	190.325	0.7	0.7	-
Commodities less food & beverages .....	151.443	-	152.917	0.3	1.0	-
Nondurables less food & beverages .....	183.923	-	190.249	4.6	3.4	-
Durables .....	119.029	-	116.365	-5.1	-2.2	-
Services .....	337.469	-	340.513	4.7	0.9	-

Note: See footnotes at end of table.

**Table 1. Consumer Price Index for All Urban Consumers (CPI-U): Indexes and percent changes for selected periods Seattle-Tacoma-Bellevue, WA (1982-84=100 unless otherwise noted) - Continued**

Item and Group	Indexes			Percent change from-		
	Dec. 2017	Jan. 2018	Feb. 2018	Feb. 2017	Dec. 2017	Jan. 2018
<b>Special aggregate indexes</b>						
All items less medical care .....	259.965	-	262.135	3.5	0.8	-
All items less shelter.....	232.107	-	233.581	1.7	0.6	-
Commodities less food .....	154.903	-	156.366	0.3	0.9	-
Nondurables .....	223.228	-	226.981	2.7	1.7	-
Nondurables less food.....	188.176	-	194.205	4.3	3.2	-
Services less rent of shelter(3).....	325.500	-	327.379	2.9	0.6	-
Services less medical care services.....	330.145	-	332.917	5.0	0.8	-
Energy .....	286.438	288.471	296.479	7.9	3.5	2.8
All items less energy .....	267.516	-	269.317	3.0	0.7	-
All items less food and energy .....	267.587	-	269.586	3.3	0.7	-

Footnotes

(1) Indexes on a November 1977=100 base.

(2) This index series was calculated using a Laspeyres estimator. All other item stratum index series were calculated using a geometric means estimator.

(3) Index is on a December 1982=100 base.

(4) Special index based on a substantially smaller sample.

(5) Indexes on a December 1993=100 base.

(6) Indexes on a December 1997=100 base.

- Data not available

NOTE: Index applies to a month as a whole, not to any specific date.