



**For Release: Tuesday, March 13, 2018**

**18-388-SAN**

WESTERN INFORMATION OFFICE: San Francisco, Calif.

Technical information: (415) 625-2270 BLSinfoSF@bls.gov www.bls.gov/regions/west

Media contact: (415) 625-2270

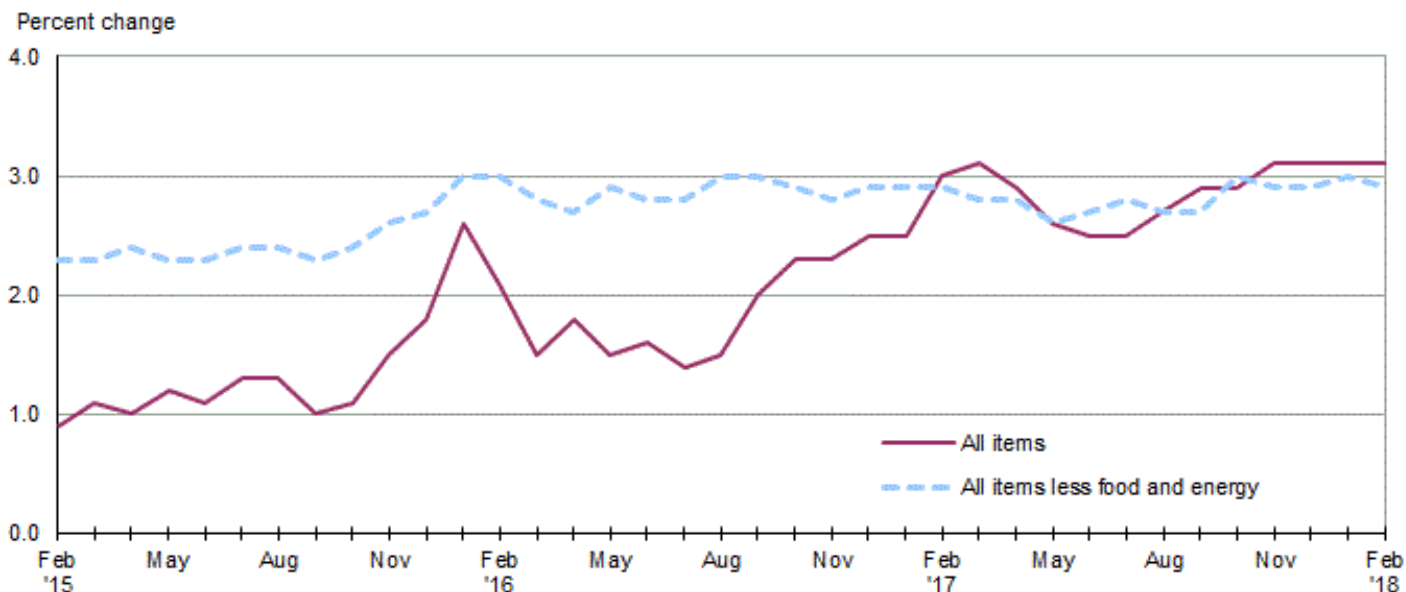
## Consumer Price Index, West Region — February 2018

**Area prices were up 0.5 percent over the past month, up 3.1 percent from a year ago**

Prices in the West Region, as measured by the Consumer Price Index for All Urban Consumers (CPI-U), advanced 0.5 percent in February, the U.S. Bureau of Labor Statistics reported today. (See [table A.](#)) The February increase was influenced by higher prices for shelter, gasoline, and apparel. (Data in this report are not seasonally adjusted. Accordingly, month-to-month changes may reflect seasonal influences.)

Over the last 12 months, the CPI-U advanced 3.1 percent. (See [chart 1](#) and [table A.](#)) Energy prices increased 8.6 percent, largely the result of an increase in the price of gasoline. The index for all items less food and energy rose 2.9 percent over the year. (See [table 1.](#))

**Chart 1. Over-the-year percent change in CPI-U, West region, February 2015–February 2018**



Source: U.S. Bureau of Labor Statistics.

### Food

Food prices inched down 0.1 percent for the month of February. (See [table 1.](#)) Prices for food at home declined 0.4 percent, but food away from home advanced 0.3 percent for the same period.

Over the year, food prices advanced 1.5 percent. Prices for food away from home increased 3.2 percent since a year ago, and prices for food at home increased 0.2 percent.

## Energy

The energy index advanced 2.3 percent over the month. The increase was mainly due to higher prices for gasoline (3.6 percent). Prices for natural gas service increased 1.2 percent and prices for electricity increased 0.4 percent for the same period.

Energy prices increased 8.6 percent over the year, largely due to higher prices for gasoline (13.2 percent). Prices paid for electricity rose 4.2 percent, while prices for natural gas service did not change during the past year.

## All items less food and energy

The index for all items less food and energy advanced 0.5 percent in February. Higher prices for apparel (3.3 percent), new and used motor vehicles (1.0 percent), and shelter (0.4 percent) were partially offset by lower prices for education and communication (-0.5 percent).

Over the year, the index for all items less food and energy rose 2.9 percent. Components contributing to the increase included other goods and services (5.3 percent), shelter (4.2 percent), and medical care (3.0 percent). Partly offsetting the increases were price declines in new vehicles (-1.7 percent) and education and communication (-1.1 percent).

**Table A. West Region CPI-U monthly and annual percent changes (not seasonally adjusted)**

Month	2013		2014		2015		2016		2017		2018	
	Monthly	Annual	Monthly	Annual	Monthly	Annual	Monthly	Annual	Monthly	Annual	Monthly	Annual
January.....	0.3	1.7	0.3	1.7	-0.3	0.7	0.5	2.6	0.5	2.5	0.5	3.1
February.....	0.8	2.0	0.4	1.3	0.6	0.9	0.1	2.1	0.6	3.0	0.5	3.1
March.....	0.4	1.5	0.6	1.5	0.8	1.1	0.2	1.5	0.3	3.1		
April.....	0.0	1.3	0.3	1.8	0.3	1.0	0.5	1.8	0.3	2.9		
May.....	0.2	1.3	0.6	2.3	0.8	1.2	0.5	1.5	0.2	2.6		
June.....	0.1	1.5	0.1	2.3	0.0	1.1	0.2	1.6	0.0	2.5		
July.....	0.0	1.9	0.1	2.3	0.3	1.3	0.1	1.4	0.1	2.5		
August.....	0.1	1.5	-0.1	2.1	-0.1	1.3	0.0	1.5	0.2	2.7		
September.....	0.2	1.3	0.1	2.0	-0.2	1.0	0.3	2.0	0.5	2.9		
October.....	-0.1	0.9	-0.1	2.0	0.0	1.1	0.3	2.3	0.3	2.9		
November.....	-0.4	1.3	-0.6	1.7	-0.2	1.5	-0.2	2.3	0.0	3.1		
December.....	0.0	1.8	-0.5	1.3	-0.1	1.8	0.0	2.5	0.1	3.1		

**The March 2018 Consumer Price Index for the West Region is scheduled to be released on April 11, 2018.**

## Technical Note

The Consumer Price Index (CPI) is a measure of the average change in prices over time in a fixed market basket of goods and services. The Bureau of Labor Statistics publishes CPIs for two population groups: (1) a CPI for All Urban Consumers (CPI-U) which covers approximately 94 percent of the total population and (2) a CPI for Urban Wage Earners and Clerical Workers (CPI-W) which covers 28 percent of the total population. The CPI-U includes, in addition to wage earners and clerical workers, groups such as professional, managerial, and technical workers, the self-employed, short-term workers, the unemployed, and retirees and others not in the labor force.

The CPI is based on prices of food, clothing, shelter, and fuels, transportation fares, charges for doctors' and dentists' services, drugs, and the other goods and services that people buy for day-to-day living. Each month, prices are collected in 75 urban areas across the country from about 5,000 housing units and approximately 22,000 retail establishments--department stores, supermarkets, hospitals, filling stations, and other types of stores and service establishments. All taxes directly associated with the purchase and use of items are included in the index.

The index measures price changes from a designated reference date (1982-84) that equals 100.0. An increase of 16.5 percent, for example, is shown as 116.5. This change can also be expressed in dollars as follows: the price of a base period "market basket" of goods and services in the CPI has risen from \$10 in 1982-84 to \$11.65. For further details see the CPI home page on the Internet at [www.bls.gov/cpi](http://www.bls.gov/cpi) and the BLS Handbook of Methods, Chapter 17, The Consumer Price Index, available on the Internet at [www.bls.gov/opub/hom/homch17\\_a.htm](http://www.bls.gov/opub/hom/homch17_a.htm).

In calculating the index, price changes for the various items in each location are averaged together with weights that represent their importance in the spending of the appropriate population group. Local data are then combined to obtain a U.S. city average. Because the sample size of a local area is smaller, the local area index is subject to substantially more sampling and other measurement error than the national index. In addition, local indexes are not adjusted for seasonal influences. As a result, local area indexes show greater volatility than the national index, although their long-term trends are quite similar. **NOTE: Area indexes do not measure differences in the level of prices between cities; they only measure the average change in prices for each area since the base period.**

The West Region covered in this release is comprised of the following thirteen states: Alaska, Arizona, California, Colorado, Hawaii, Idaho, Montana, Nevada, New Mexico, Oregon, Utah, Washington, and Wyoming.

Information in this release will be made available to sensory impaired individuals upon request. Voice phone: (202) 691-5200; Federal Relay Service: (800) 877-8339.

**Table 1. Consumer Price Index for All Urban Consumers (CPI-U): Indexes and percent changes for selected periods West (1982-84=100 unless otherwise noted)**

Item and Group	Indexes			Percent change from-		
	Dec. 2017	Jan. 2018	Feb. 2018	Feb. 2017	Dec. 2017	Jan. 2018
<b>Expenditure category</b>						
All Items.....	257.347	258.638	259.986	3.1	1.0	0.5
All items (December 1977=100).....	415.987	418.073	420.252			
Food and beverages .....	256.376	257.656	257.552	1.5	0.5	0.0
Food .....	256.154	257.498	257.364	1.5	0.5	-0.1
Food at home .....	245.420	246.729	245.834	0.2	0.2	-0.4
Cereals and bakery products .....	254.973	257.314	256.095		0.4	-0.5
Meats, poultry, fish, and eggs.....	254.505	253.147	253.836		-0.3	0.3
Dairy and related products .....	228.435	227.833	225.991		-1.1	-0.8
Fruits and vegetables .....	326.237	332.137	327.416		0.4	-1.4
Nonalcoholic beverages and beverage materials.....	167.981	170.209	170.867		1.7	0.4
Other food at home .....	211.524	212.163	211.710		0.1	-0.2
Food away from home.....	270.154	271.543	272.390	3.2	0.8	0.3
Alcoholic beverages .....	255.996	256.442	256.715	1.4	0.3	0.1
Housing .....	280.790	282.103	283.071	3.8	0.8	0.3
Shelter .....	323.233	324.386	325.619	4.2	0.7	0.4
Rent of primary residence(1).....	342.109	343.295	344.082	4.6	0.6	0.2
Owners' equiv. rent of residences(1)(2).....	340.216	341.404	342.157	4.4	0.6	0.2
Owners' equiv. rent of primary residence(1)(2).....	340.221	341.401	342.156	4.4	0.6	0.2
Fuels and utilities.....	290.634	293.786	295.214	3.2	1.6	0.5
Household energy .....	248.092	250.575	251.781	3.1	1.5	0.5
Energy services(1) .....	249.739	252.135	253.481	3.2	1.5	0.5
Electricity(1).....	278.983	282.727	283.732	4.2	1.7	0.4
Utility (piped) gas service(1).....	195.765	194.772	197.169	0.0	0.7	1.2
Household furnishings and operations.....	128.853	129.937	129.828	0.6	0.8	-0.1
Apparel .....	114.047	116.516	120.338	-0.4	5.5	3.3
Transportation .....	207.212	208.490	211.782	5.3	2.2	1.6
Private transportation .....	202.433	203.570	206.681	5.9	2.1	1.5
New and used motor vehicles(3).....	99.407	99.419	100.372	0.4	1.0	1.0
New vehicles .....	146.734	146.965	147.182	-1.7	0.3	0.1
New cars and trucks(3)(4).....	101.910	102.078	102.231	-1.7	0.3	0.1
New cars(4).....	143.318	143.406	143.662	-2.1	0.2	0.2
Used cars and trucks.....	131.270	131.703	132.834	0.4	1.2	0.9
Motor fuel .....	231.080	234.327	242.672	13.3	5.0	3.6
Gasoline (all types).....	229.776	233.056	241.523	13.2	5.1	3.6
Gasoline, unleaded regular(4).....	226.921	230.194	238.678	13.4	5.2	3.7
Gasoline, unleaded midgrade(4)(5).....	220.467	223.076	230.775	12.9	4.7	3.5
Gasoline, unleaded premium(4).....	226.645	229.790	237.552	12.3	4.8	3.4
Motor vehicle insurance(6).....	803.388	808.172	817.530		1.8	1.2
Medical Care .....	484.898	487.607	488.655	3.0	0.8	0.2
Medical care commodities.....	375.618	379.413	380.225	4.8	1.2	0.2
Medical care services.....	519.234	521.556	522.677	2.5	0.7	0.2
Professional services .....	354.172	356.214	356.793	1.1	0.7	0.2
Recreation(3).....	113.486	113.466	113.538	0.5	0.0	0.1
Education and communication(3).....	136.336	136.314	135.575	-1.1	-0.6	-0.5
Tuition, other school fees, and child care(6) .....	1,385.954	1,383.317	1,378.817		-0.5	-0.3
Other goods and services .....	425.924	428.382	433.833	5.3	1.9	1.3
<b>Commodity and Service Group</b>						
All Items.....	257.347	258.638	259.986	3.1	1.0	0.5
Commodities .....	180.621	181.796	183.013	1.9	1.3	0.7

Note: See footnotes at end of table.

**Table 1. Consumer Price Index for All Urban Consumers (CPI-U): Indexes and percent changes for selected periods West (1982-84=100 unless otherwise noted) - Continued**

Item and Group	Indexes			Percent change from-		
	Dec. 2017	Jan. 2018	Feb. 2018	Feb. 2017	Dec. 2017	Jan. 2018
Commodities less food & beverages.....	143.138	144.214	145.864	2.1	1.9	1.1
Nondurables less food & beverages .....	184.168	186.549	190.304	4.9	3.3	2.0
Nondurables less food, beverages, and apparel .....	233.215	235.508	239.179	6.5	2.6	1.6
Durables .....	105.804	105.843	105.822	-1.6	0.0	0.0
Services.....	328.447	329.818	331.260	3.7	0.9	0.4
Rent of shelter(2).....	344.127	345.360	346.684	4.2	0.7	0.4
Transportation services .....	308.597	309.895	314.358	6.5	1.9	1.4
Other services .....	346.360	346.508	347.101	1.0	0.2	0.2
<b>Special aggregate indexes:</b>						
All items less medical care .....	246.945	248.172	249.529	3.1	1.0	0.5
All items less food .....	257.704	258.988	260.568	3.3	1.1	0.6
All items less shelter.....	231.566	232.916	234.313	2.4	1.2	0.6
Commodities less food .....	147.296	148.364	149.990	2.1	1.8	1.1
Nondurables .....	220.251	222.154	224.170	3.1	1.8	0.9
Nondurables less food.....	189.420	191.703	195.279	4.6	3.1	1.9
Nondurables less food and apparel.....	235.092	237.208	240.553	6.0	2.3	1.4
Services less rent of shelter(2).....	345.232	346.931	348.681	3.0	1.0	0.5
Services less medical care services.....	315.113	316.419	317.878	3.8	0.9	0.5
Energy .....	241.328	244.320	249.957	8.6	3.6	2.3
All items less energy .....	260.653	261.831	262.878	2.7	0.9	0.4
All items less food and energy .....	262.213	263.366	264.619	2.9	0.9	0.5
Commodities less food and energy commodities .....	138.320	139.128	139.981	0.1	1.2	0.6
Energy commodities.....	235.730	239.090	247.397	12.9	4.9	3.5
Services less energy services.....	334.281	335.602	337.056	3.7	0.8	0.4

Footnotes

(1) This index series was calculated using a Laspeyres estimator. All other item stratum index series were calculated using a geometric means estimator.

(2) Index is on a December 1982=100 base.

(3) Indexes on a December 1997=100 base.

(4) Special index based on a substantially smaller sample.

(5) Indexes on a December 1993=100 base.

(6) Indexes on a December 1977=100 base.

- Data not available

Regions defined as the four Census regions. West includes Alaska, Arizona, California, Colorado, Hawaii, Idaho, Montana, Nevada, New Mexico, Oregon, Utah, Washington, and Wyoming.

NOTE: Index applies to a month as a whole, not to any specific date. Data not seasonally adjusted.