



**For Release: Wednesday, November 13, 2019**

**19-2020-SAN**

WESTERN INFORMATION OFFICE: San Francisco, Calif.

Technical information: (415) 625-2270 BLSinfoSF@bls.gov www.bls.gov/regions/west

Media contact: (415) 625-2270

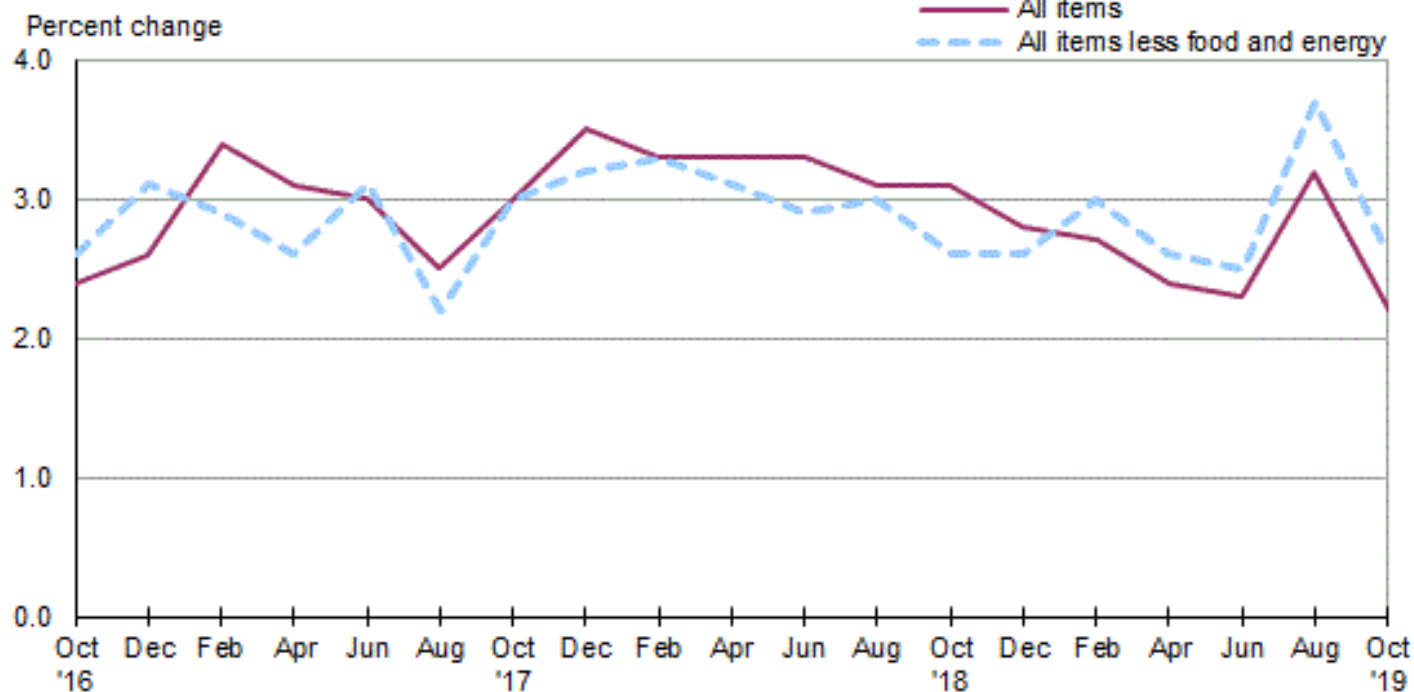
## Consumer Price Index, Seattle area — October 2019

**Area prices were down 0.6 percent over the past two months, up 2.2 percent from a year ago**

Prices in the Seattle area, as measured by the Consumer Price Index for All Urban Consumers (CPI-U), decreased 0.6 percent for the two months ending in October 2019, the U.S. Bureau of Labor Statistics reported today. (See [table A](#).) Assistant Commissioner for Regional Operations Richard Holden noted that the October decrease was influenced by lower prices for shelter and household furnishings operations. (Data in this report are not seasonally adjusted. Accordingly, month-to-month changes may reflect seasonal influences.)

Over the last 12 months, the CPI-U rose 2.2 percent. (See [chart 1](#) and [table A](#).) The index for all items less food and energy increased 2.6 percent over the year. Food prices rose 1.9 percent. Energy prices decreased 3.1 percent, largely the result of a decrease in the price of gasoline. (See [table 1](#).)

**Chart 1. Over-the-year percent change in CPI-U, Seattle-Tacoma-Bellevue, WA, October 2016–October 2019**



Source: U.S. Bureau of Labor Statistics.

### Food

Food prices advanced 0.6 percent for the two months ending in October. (See [table 1](#).) Prices for food at home and prices for food away from home both increased 0.6 percent for the same period.

Over the year, food prices rose 1.9 percent. Prices for food away from home advanced 4.0 percent since a year ago, and prices for food at home increased 0.3 percent.

### Energy

The energy index rose 1.3 percent for the two months ending in October. The increase was mainly due to higher prices for gasoline (2.7 percent). Prices for electricity declined 2.0 percent, but prices for natural gas service edged up 0.1 percent for the same period.

Energy prices decreased 3.1 percent over the year, largely due to lower prices for gasoline (-4.5 percent). Prices paid for natural gas service declined 7.5 percent, but prices for electricity increased 1.3 percent during the past year.

### All items less food and energy

The index for all items less food and energy declined 0.9 percent in the latest two-month period. Lower prices for household furnishings and operations (-7.0 percent) and shelter (-1.0 percent) were partially offset by higher prices for medical care (1.2 percent) and other goods and services (0.6 percent).

Over the year, the index for all items less food and energy increased 2.6 percent. Components contributing to the increase included education and communication (5.1 percent) and shelter (3.8 percent). Partly offsetting the increases was a price decline in new vehicles (-3.6 percent).

**Table A. Seattle-Tacoma-Bellevue, WA, CPI-U 2-month and 12-month percent changes, all items index, not seasonally adjusted**

Month	2015		2016		2017		2018		2019	
	2-month	12-month	2-month	12-month	2-month	12-month	2-month	12-month	2-month	12-month
February .....	0.2	1.1	0.2	2.2	1.0	3.4	0.8	3.3	0.7	2.7
April .....	0.9	0.4	1.1	2.5	0.8	3.1	0.8	3.3	0.5	2.4
June .....	1.6	1.6	0.9	1.8	0.8	3.0	0.8	3.3	0.7	2.3
August .....	0.0	1.8	0.3	2.1	-0.2	2.5	-0.3	3.1	0.6	3.2
October .....	-0.3	1.2	0.0	2.4	0.5	3.0	0.4	3.1	-0.6	2.2
December .....	-0.2	2.2	0.0	2.6	0.5	3.5	0.2	2.8		

**The December 2019 Consumer Price Index for the Seattle area is scheduled to be released on January 14, 2020.**

### Consumer Price Index Geographic Revision for 2018

In January 2018, BLS introduced a new geographic area sample for the Consumer Price Index (CPI). As part of the new sample, the index for this area was renamed. Additional information on the geographic revision is available at: [www.bls.gov/cpi/additional-resources/geographic-revision-2018.htm](http://www.bls.gov/cpi/additional-resources/geographic-revision-2018.htm).

## Technical Note

The Consumer Price Index (CPI) is a measure of the average change in prices over time in a fixed market basket of goods and services. The Bureau of Labor Statistics publishes CPIs for two population groups: (1) a CPI for All Urban Consumers (CPI-U) which covers approximately 94 percent of the total population and (2) a CPI for Urban Wage Earners and Clerical Workers (CPI-W) which covers 28 percent of the total population. The CPI-U includes, in addition to wage earners and clerical workers, groups such as professional, managerial, and technical workers, the self-employed, short-term workers, the unemployed, and retirees and others not in the labor force.

The CPI is based on prices of food, clothing, shelter, and fuels, transportation fares, charges for doctors' and dentists' services, drugs, and the other goods and services that people buy for day-to-day living. Each month, prices are collected in 75 urban areas across the country from about 5,000 housing units and approximately 22,000 retail establishments--department stores, supermarkets, hospitals, filling stations, and other types of stores and service establishments. All taxes directly associated with the purchase and use of items are included in the index.

The index measures price changes from a designated reference date (1982-84) that equals 100.0. An increase of 16.5 percent, for example, is shown as 116.5. This change can also be expressed in dollars as follows: the price of a base period "market basket" of goods and services in the CPI has risen from \$10 in 1982-84 to \$11.65. For further details see the CPI home page on the Internet at [www.bls.gov/cpi](http://www.bls.gov/cpi) and the BLS Handbook of Methods, Chapter 17, The Consumer Price Index, available on the Internet at [www.bls.gov/opub/hom/homch17\\_a.htm](http://www.bls.gov/opub/hom/homch17_a.htm).

In calculating the index, price changes for the various items in each location are averaged together with weights that represent their importance in the spending of the appropriate population group. Local data are then combined to obtain a U.S. city average. Because the sample size of a local area is smaller, the local area index is subject to substantially more sampling and other measurement error than the national index. In addition, local indexes are not adjusted for seasonal influences. As a result, local area indexes show greater volatility than the national index, although their long-term trends are quite similar. **NOTE:Area indexes do not measure differences in the level of prices between cities; they only measure the average change in prices for each area since the base period.**

The Seattle-Tacoma-Bellevue, WA. metropolitan area covered in this release is comprised of King, Pierce, and Snohomish Counties in the State of Washington.

Information in this release will be made available to sensory impaired individuals upon request. Voice phone: (202) 691-5200; Federal Relay Service: (800) 877-8339.

**Table 1. Consumer Price Index for All Urban Consumers (CPI-U): Indexes and percent changes for selected periods Seattle-Tacoma-Bellevue, WA (1982-84=100 unless otherwise noted)**

Item and Group	Indexes			Percent change from-		
	Aug. 2019	Sep. 2019	Oct. 2019	Oct. 2018	Aug. 2019	Sep. 2019
<b>Expenditure category</b>						
All items .....	280.286	-	278.682	2.2	-0.6	-
All items (1967=100) .....	854.420	-	849.531	-	-	-
Food and beverages .....	276.599	-	278.101	2.0	0.5	-
Food .....	279.043	-	280.645	1.9	0.6	-
Food at home .....	253.251	256.413	254.663	0.3	0.6	-0.7
Cereals and bakery products .....	307.277	-	301.819	10.2	-1.8	-
Meats, poultry, fish, and eggs .....	218.511	-	215.383	1.3	-1.4	-
Dairy and related products .....	217.268	-	225.755	2.5	3.9	-
Fruits and vegetables .....	398.242	-	401.013	-2.9	0.7	-
Nonalcoholic beverages and beverage materials(1) .....	279.579	-	296.923	-6.0	6.2	-
Other food at home .....	213.910	-	213.991	-0.3	0.0	-
Food away from home .....	318.528	-	320.419	4.0	0.6	-
Food away from home .....	318.528	-	320.419	4.0	0.6	-
Alcoholic beverages .....	247.102	-	247.390	2.2	0.1	-
Housing .....	335.419	-	330.367	3.4	-1.5	-
Shelter .....	386.127	386.997	382.431	3.8	-1.0	-1.2
Rent of primary residence(2) .....	388.735	390.531	391.308	2.9	0.7	0.2
Owners' equiv. rent of residences(2)(3) .....	403.670	405.690	407.103	4.6	0.9	0.3
Owners' equiv. rent of primary residence(1)(2) .....	403.670	405.690	407.103	4.6	0.9	0.3
Fuels and utilities .....	270.909	-	268.771	0.6	-0.8	-
Household energy .....	241.097	241.639	238.560	-0.5	-1.1	-1.3
Energy services(2) .....	285.856	285.856	281.294	-0.4	-1.6	-1.6
Electricity(2) .....	318.090	318.090	311.850	1.3	-2.0	-2.0
Utility (piped) gas service(2) .....	148.993	148.993	149.111	-7.5	0.1	0.1
Household furnishings and operations .....	189.511	-	176.246	1.8	-7.0	-
Apparel .....	128.469	-	126.699	-0.3	-1.4	-
Transportation .....	224.109	-	224.569	-2.3	0.2	-
Private transportation .....	236.869	-	237.087	-1.6	0.1	-
New and used motor vehicles(4) .....	98.792	-	97.577	-2.5	-1.2	-
New vehicles(1) .....	192.668	-	193.986	-3.6	0.7	-
Used cars and trucks(1) .....	330.934	-	316.678	1.0	-4.3	-
Motor fuel .....	358.388	351.588	367.923	-4.5	2.7	4.6
Gasoline (all types) .....	365.829	358.810	375.540	-4.5	2.7	4.7
Gasoline, unleaded regular(4) .....	396.132	388.259	407.072	-4.7	2.8	4.8
Gasoline, unleaded midgrade(4)(5) .....	291.827	287.751	298.997	-3.4	2.5	3.9
Gasoline, unleaded premium(4) .....	339.930	334.398	347.000	-3.2	2.1	3.8
Motor vehicle insurance(1) .....	576.371	-	576.371	-1.3	0.0	-
Medical care .....	406.802	-	411.583	3.0	1.2	-
Recreation(6) .....	97.304	-	97.218	1.7	-0.1	-
Education and communication(6) .....	142.204	-	141.898	5.1	-0.2	-
Tuition, other school fees, and child care(1) ..	1,681.157	-	1,684.599	8.1	0.2	-
Other goods and services .....	414.816	-	417.340	1.4	0.6	-
<b>Commodity and service group</b>						
All items .....	280.286	-	278.682	2.2	-0.6	-
Commodities .....	196.480	-	194.923	0.3	-0.8	-
Commodities less food & beverages .....	157.324	-	154.625	-0.8	-1.7	-
Nondurables less food & beverages .....	192.321	-	193.290	-0.6	0.5	-
Durables .....	122.593	-	116.895	-1.2	-4.6	-
Services .....	358.602	-	356.979	3.2	-0.5	-

Note: See footnotes at end of table.

**Table 1. Consumer Price Index for All Urban Consumers (CPI-U): Indexes and percent changes for selected periods Seattle-Tacoma-Bellevue, WA (1982-84=100 unless otherwise noted) - Continued**

Item and Group	Indexes			Percent change from-		
	Aug. 2019	Sep. 2019	Oct. 2019	Oct. 2018	Aug. 2019	Sep. 2019
<b>Special aggregate indexes</b>						
All items less medical care .....	274.634	-	272.715	2.1	-0.7	-
All items less shelter.....	239.765	-	238.980	1.2	-0.3	-
Commodities less food .....	161.017	-	158.388	-0.7	-1.6	-
Nondurables .....	232.723	-	233.946	0.8	0.5	-
Nondurables less food.....	196.876	-	197.810	-0.4	0.5	-
Services less rent of shelter(3).....	333.479	-	334.477	2.3	0.3	-
Services less medical care services.....	351.538	-	349.235	3.1	-0.7	-
Energy .....	306.918	303.513	310.855	-3.1	1.3	2.4
All items less energy .....	281.789	-	279.885	2.5	-0.7	-
All items less food and energy .....	282.507	-	280.017	2.6	-0.9	-

Footnotes

(1) Indexes on a November 1977=100 base.

(2) This index series was calculated using a Laspeyres estimator. All other item stratum index series were calculated using a geometric means estimator.

(3) Indexes on a December 1982=100 base.

(4) Special index based on a substantially smaller sample.

(5) Indexes on a December 1993=100 base.

(6) Indexes on a December 1997=100 base.

- Data not available

NOTE: Index applies to a month as a whole, not to any specific date.