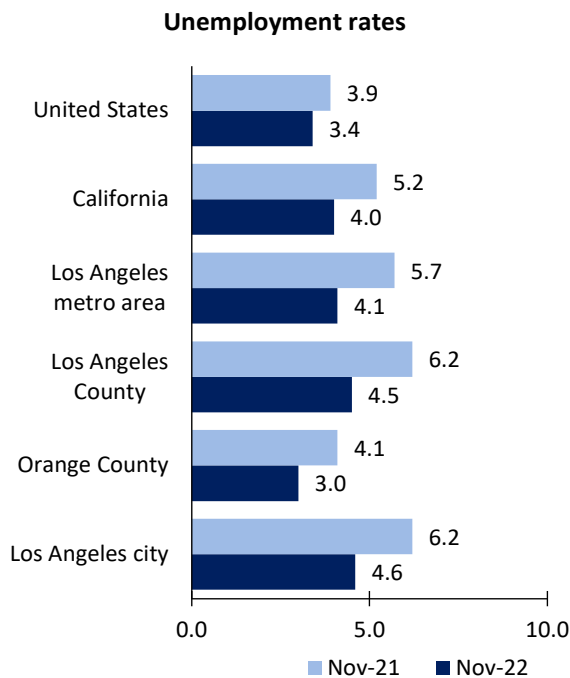


# Los Angeles Area Economic Summary

Updated January 05, 2023

This summary presents a sampling of economic information for the area; supplemental data are provided for regions and the nation. Subjects include **unemployment, employment, wages, prices, spending, and benefits**. All data are not seasonally adjusted and some may be subject to revision. Area definitions may differ by subject. For more area summaries and geographic definitions, see [www.bls.gov/regions/economic-summaries.htm](http://www.bls.gov/regions/economic-summaries.htm).

## Unemployment rates for the nation and selected areas



Source: U.S. BLS, Local Area Unemployment Statistics.

## Average weekly wages for all industries by county

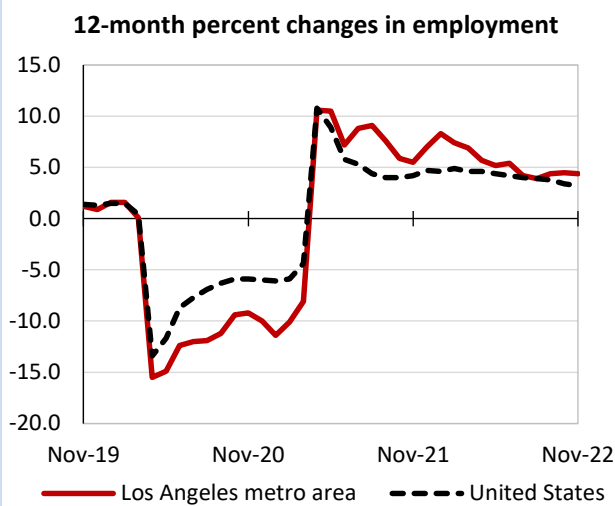
Los Angeles-Long Beach-Anaheim, CA MSA, second quarter 2022

(U.S. = \$1,294; Area = \$1,431)



Source: U.S. BLS, Quarterly Census of Employment and Wages.

## Over-the-year changes in employment on nonfarm payrolls and employment by major industry sector



Source: U.S. BLS, Current Employment Statistics.

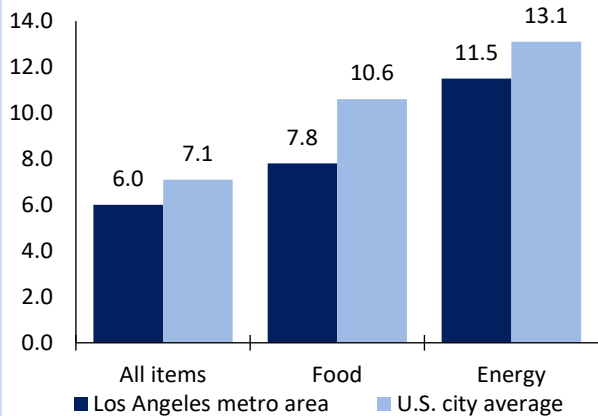
| Los Angeles metro area employment (number in thousands) | Nov. 2022 | Change from Nov. 2021 to Nov. 2022 |         |
|---|-----------|------------------------------------|---------|
|   |           | Number                             | Percent |
| Total nonfarm   | 6,341.5   | 266.9                              | 4.4     |
| Mining and logging                                      | 2.0       | 0.0                                | 0.0     |
| Construction  | 266.5     | 15.2                               | 6.0     |
| Manufacturing   | 478.9     | 17.2                               | 3.7     |
| Trade, transportation, and utilities                    | 1,125.8   | 22.8                               | 2.1     |
| Information   | 265.0     | 12.6                               | 5.0     |
| Financial activities                                    | 329.2     | 5.5                                | 1.7     |
| Professional and business services                      | 1,027.9   | 46.3                               | 4.7     |
| Education and health services                           | 1,161.9   | 60.6                               | 5.5     |
| Leisure and hospitality                                 | 740.1     | 65.1                               | 9.6     |
| Other services  | 206.5     | 14.8                               | 7.7     |
| Government  | 737.7     | 6.8                                | 0.9     |

Source: U.S. BLS, Current Employment Statistics.



Over-the-year change in the prices paid by urban consumers for selected categories

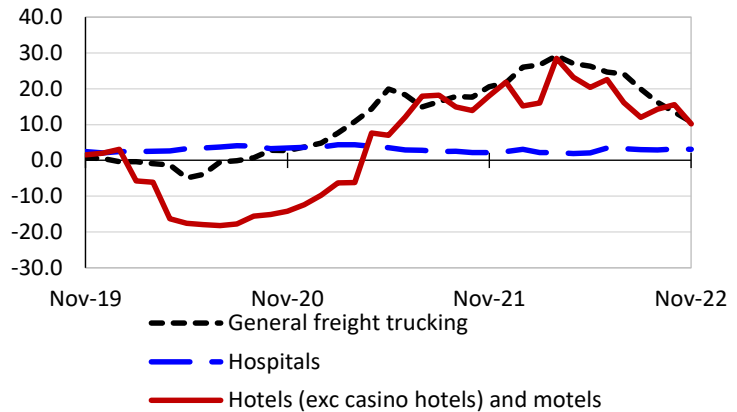
**12-month percent change in CPI-U, November 2022**



Source: U.S. BLS, Consumer Price Index.

Over-the-year changes in the selling prices received by producers for selected industries nationwide

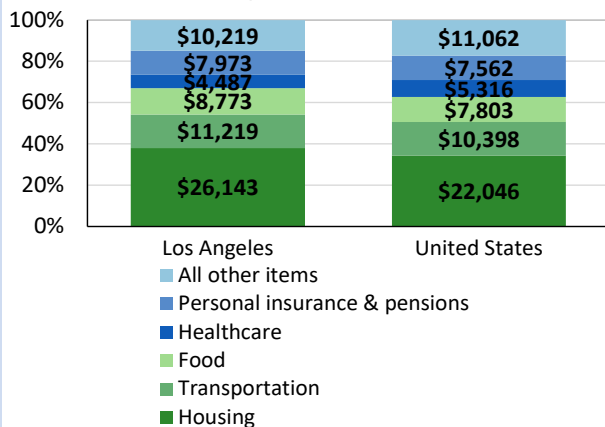
**12-month percent changes in PPI**



Source: U.S. BLS, Producer Price Index.

Average annual spending and percent distribution for selected categories

**Average annual expenditures, United States and Los Angeles, 2020-21**



Source: U.S. BLS, Consumer Expenditure Survey.

Average hourly wages for selected occupations

| Occupation               | Los Angeles metro area | United States |
|--------------------------|------------------------|---------------|
| All occupations          | \$31.70                | \$28.01       |
| Human resources managers | 72.46                  | 65.67         |
| Registered nurses        | 55.82                  | 39.78         |
| Accountants and auditors | 43.13                  | 40.37         |
| Electricians             | 34.83                  | 30.44         |
| Chefs and head cooks     | 29.64                  | 27.37         |
| Construction laborers    | 24.70                  | 21.22         |

Source: U.S. BLS, Occupational Employment and Wage Statistics, May 2021.

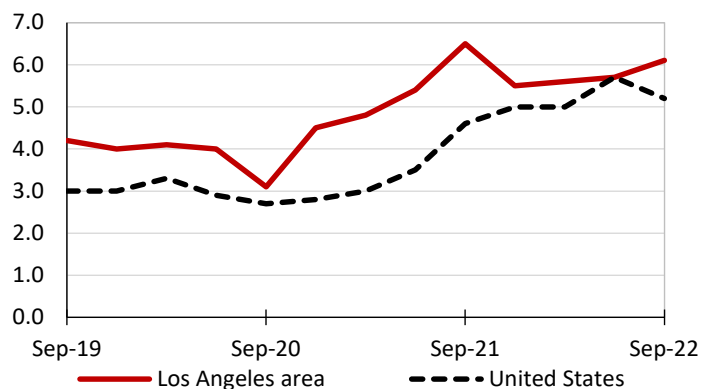
Employer costs per hour worked for wages and selected employee benefits by geographic division

| Private industry, September 2022 | West census region | United States |
|----------------------------------|--------------------|---------------|
| Total compensation               | \$43.16            | \$39.61       |
| Wages and salaries               | 30.53              | 27.93         |
| Total benefits                   | 12.62              | 11.68         |
| Paid leave                       | 3.26               | 2.94          |
| Vacation                         | 1.65               | 1.51          |
| Supplemental pay                 | 1.36               | 1.41          |
| Insurance                        | 3.22               | 3.00          |
| Retirement and savings           | 1.41               | 1.35          |
| Legally required benefits        | 3.37               | 2.98          |

Source: U.S. BLS, Employer Costs for Employee Compensation.

Over-the-year changes in wages and salaries

**12-month percent changes in ECI**



Source: U.S. BLS, Employment Cost Index.

