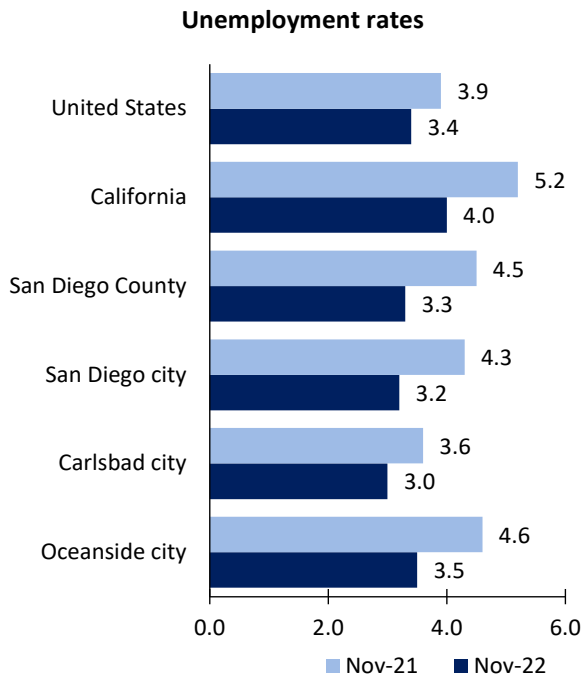


San Diego Area Economic Summary

Updated January 05, 2023

This summary presents a sampling of economic information for the area; supplemental data are provided for regions and the nation. Subjects include **unemployment, employment, wages, prices, spending, and benefits**. All data are not seasonally adjusted and some may be subject to revision. Area definitions may differ by subject. For more area summaries and geographic definitions, see www.bls.gov/regions/economic-summaries.htm.

Unemployment rates for the nation and selected areas



Source: U.S. BLS, Local Area Unemployment Statistics.

Average weekly wages for all industries by county

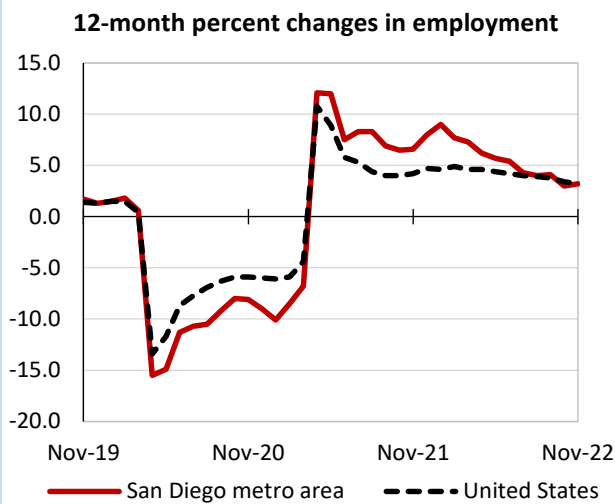
San Diego metro area, second quarter 2022

(U.S. = \$1,294; Area = \$1,420)



Source: U.S. BLS, Quarterly Census of Employment and Wages.

Over-the-year changes in employment on nonfarm payrolls and employment by major industry sector



Source: U.S. BLS, Current Employment Statistics.

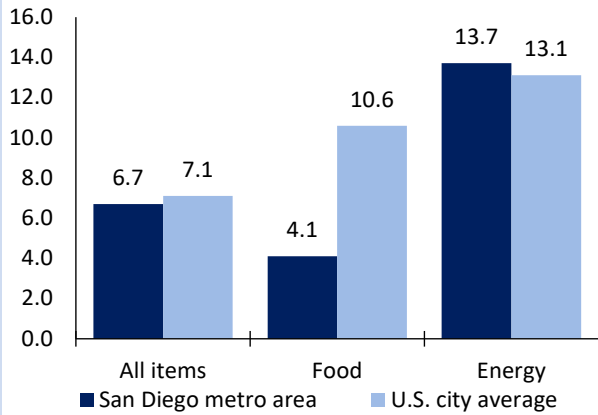
San Diego metro area employment (number in thousands)	Nov. 2022	Change from Nov. 2021 to Nov. 2022	
		Number	Percent
Total nonfarm	1,545.4	48.4	3.2
Mining and logging	0.3	0.0	0.0
Construction	86.9	1.8	2.1
Manufacturing	113.8	-1.5	-1.3
Trade, transportation, and utilities	224.7	-0.6	-0.3
Information	22.7	0.4	1.8
Financial activities	73.5	-1.7	-2.3
Professional and business services	287.5	12.7	4.6
Education and health services	226.1	6.3	2.9
Leisure and hospitality	202.7	19.9	10.9
Other services	54.3	3.1	6.1
Government	252.9	8.0	3.3

Source: U.S. BLS, Current Employment Statistics.



Over-the-year change in the prices paid by urban consumers for selected categories

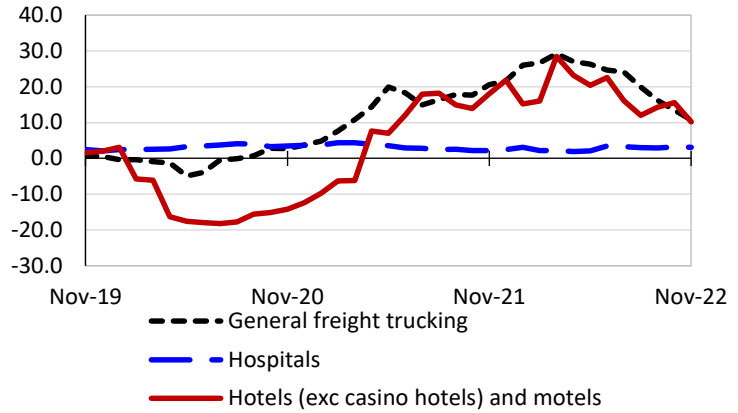
12-month percent change in CPI-U, November 2022



Source: U.S. BLS, Consumer Price Index.

Over-the-year changes in the selling prices received by producers for selected industries nationwide

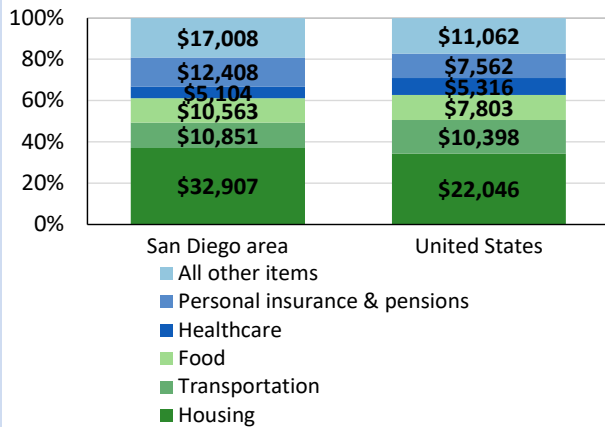
12-month percent changes in PPI



Source: U.S. BLS, Producer Price Index.

Average annual spending and percent distribution for selected categories

Average annual expenditures, United States and San Diego area, 2020-21



Source: U.S. BLS, Consumer Expenditure Survey.

Average hourly wages for selected occupations

Occupation	San Diego metro area	United States
All occupations	\$32.31	\$28.01
Human resources managers	69.20	65.67
Registered nurses	54.40	39.78
Accountants and auditors	42.08	40.37
Electricians	32.98	30.44
Construction laborers	24.77	21.22
Hotel, motel, and resort desk clerks	16.49	13.48

Source: U.S. BLS, Occupational Employment and Wage Statistics, May 2021.

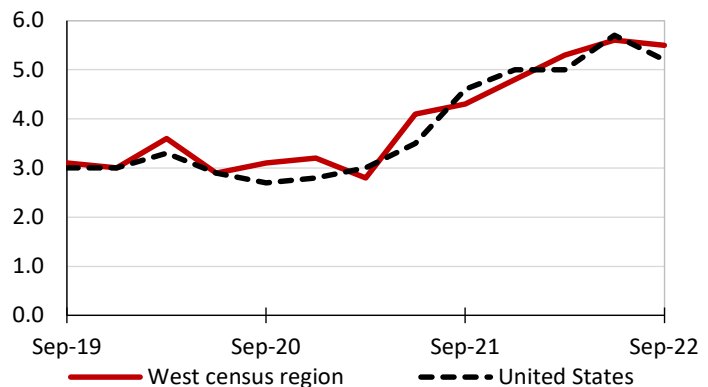
Employer costs per hour worked for wages and selected employee benefits by geographic division

Private industry, September 2022	West census region	United States
Total compensation	\$43.16	\$39.61
Wages and salaries	30.53	27.93
Total benefits	12.62	11.68
Paid leave	3.26	2.94
Vacation	1.65	1.51
Supplemental pay	1.36	1.41
Insurance	3.22	3.00
Retirement and savings	1.41	1.35
Legally required benefits	3.37	2.98

Source: U.S. BLS, Employer Costs for Employee Compensation.

Over-the-year changes in wages and salaries

12-month percent changes in ECI



Source: U.S. BLS, Employment Cost Index.